

SkinnyPatch® 6A Shielded Modular Cords - International

Siemon's SkinnyPatch 6A Shielded Modular Cords deliver superior Category 6A performance with a reduced cable diameter for improved airflow and increased flexibility in high-density patching areas. The cord's smaller 28 AWG stranded copper construction offers a significantly tighter bend radius for easier cable routing and enhanced cable management, providing pathway space savings in racks and cabinets while facilitating moves, adds and changes in tight spaces. These cords also feature Siemon's high performance shielded S/FTP construction for exceptional NEXT performance and innovative 360-degree crimp for excellent plug-to-cable strain relief. SkinnyPatch 6A Shielded Modular Cords fully support Category 6A/Class Ea channels backed by Siemon's 25-year system warranty.

PERFORMANCE SPECIFICATIONS

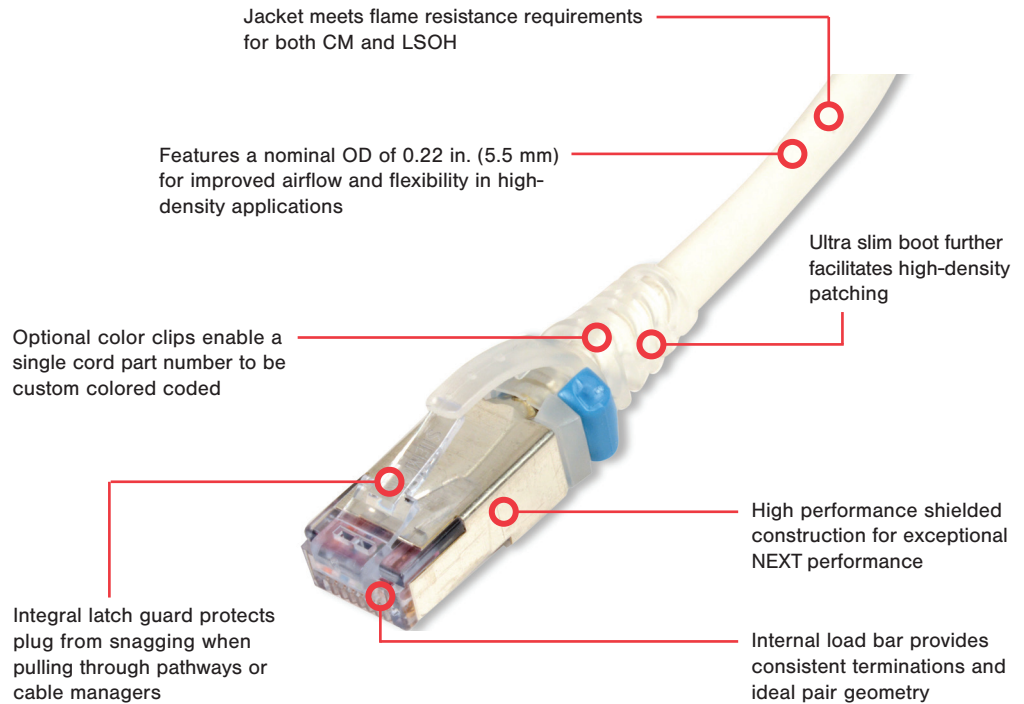
- ANSI/TIA-568.2-E
- TIA 968-A
- ANSI/TIA-1096-A
- ISO/IEC 11801-1 Class Eca
- IEEE 802.3af (Type 1 PoE)
- IEEE 802.3at (Type 2 PoE)
- IEEE 802.3bt (Type 3 PoE)
- IEEE 802.3bt (Type 4 PoE)
- Power over HDBaseT (PoH)
- IEC 60603-7
- IEC 61156-6
- cUL US Listed
- IEC 60332-1, 60754, 61034
- IEC 60512-99-002 (3rd party verified)

*Patch cord length is limited to 8 meters for a maximum channel length of 98 meters.

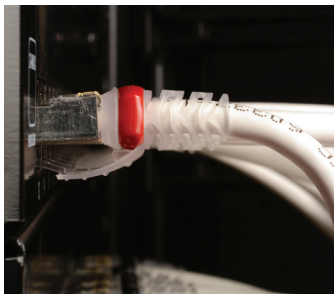
**See table for recommended maximum bundle size.



Data | Power | Reach | Delivered



Optional coloured clips enable field colour coding and can be easily snapped into place without having to disconnect cords



Boot and integrated strain relief ensures minimum bend radius for Category 6A performance



Smaller diameter cable significantly reduces bundle and pathway fill for space savings.



Offers improved airflow, accessibility and cable management in high-density applications.

Product Information

PERFORMANCE SPECIFICATIONS*

CORD ASSEMBLY

Compatibility	Category 6A, 6 and 5e RJ 45 outlets
Wiring	T568A/B as specified by part #
Marking	P/N, length, performance level
Operating Temperature	-20 to 75°C (-4 to 167°F)
Remote Powering	PoE Type 1,2,3,4 and PoH
Green Features	RoHS, lead-free, halogen-free, PVC free
Plastic Materials	Flame retardant thermoplastic

CABLE

Wire Size (Nominal)	28 AWG 7x36 Stranded bare copper
Construction	S/FTP
Cable O.D. (Nominal)	5.5 mm (0.22 in.)
Jacket Type	CM/LSOH
Bend Radius	22 mm (0.87 in.)
Attenuation De-Rating Factor	1.9

PLUG

Number of Plug Insertion Cycles	2500
Min. Plug Retention Force	50N (11.24 lbf)
Contact Resistance	20 mΩ
Input to Output DC Resistance	200 mΩ (signal conductors) 100 mΩ (shield)
Insulation Resistance	500 MΩ
Min. Dielectric Withstand Voltage	1000 V DC or AC peak (contact to contact) 1500 V DC or AC peak (contact to shield)
Current Rating @ 25 C (77 F)	1.5 A
Flammability Rating	UL 94 - V0
Contact Materials	Copper alloy with contact plating of 50 microinches gold or equivalent

6A SHIELDED MAXIMUM RECOMMENDED BUNDLE SIZE

Application	Current per Pair (mA)	28 AWG Patch Cords
Type 1 PoE (15.4 W)	350	96
Type 2 PoE (30 W)	600	96
Type 3 PoE (60 W)	600	48
Type 4 PoE (90 W)	960	24
PoH (100 W)	1000	24

Ordering Information

SP6A-S(XX)M-(XX)(X) ----- SkinnyPatch Category 6A double-ended, 4-pair, 28 AWG S/FTP stranded modular patch cord, T568A/B, clear boot.

- Length**
- 01 = 1m (3.3 ft.)
 - 1.5 = 1.5m (5 ft.)
 - 02 = 2m (6.6 ft.)
 - 03 = 3m (9.8 ft.)
 - 04 = 4m (13.1 ft.)
 - 05 = 5m (16.5 ft.)
 - 7.5 = 7.5m (24.6 ft.)

Bulk Package

- Blank = Non Bulk
- B = Bulk (Quantity 100)

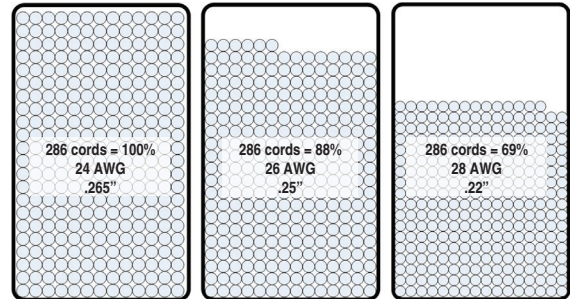
Jacket Color

- 01 = Black 04 = Gray 07 = Green
- 02 = White 05 = Yellow 08 = Violet
- 03 = Red 06 = Blue 09 = Orange

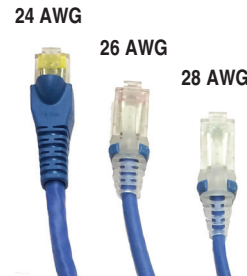
CLIP-(XX) ----- Color coding clip, bag of 25

Clip Color

- 01 = Black 04 = Gray 07 = Green
- 02 = White 05 = Yellow 08 = Violet
- 03 = Red 06 = Blue 09 = Orange



Fill Comparison: Category 6A Cords in a 6 x 3.5 cable manager



Construction: Smaller 28 AWG construction results in a smaller bend radius for easier routing in tight spaces.



SCAN TO DOWNLOAD SPEC SHEET

Because we continuously improve our products, Siemon reserves the right to change specifications and availability without prior notice.

North America
P: (1) 860 945 4200

Mexico
P: (521) 556 387 7708/09/10

Latin America
P: (571) 657 1950/51/52

Europe
P: (44) 0 1932 571771

Asia Pacific
P: (61) 2 8977 7500

Siemon OEM Technologies
P: (1) 860 945 4213
www.siemon.com/OEM

China
P: (86) 215385 0303

India, Middle East & Africa
P: (971) 4 3689743

