

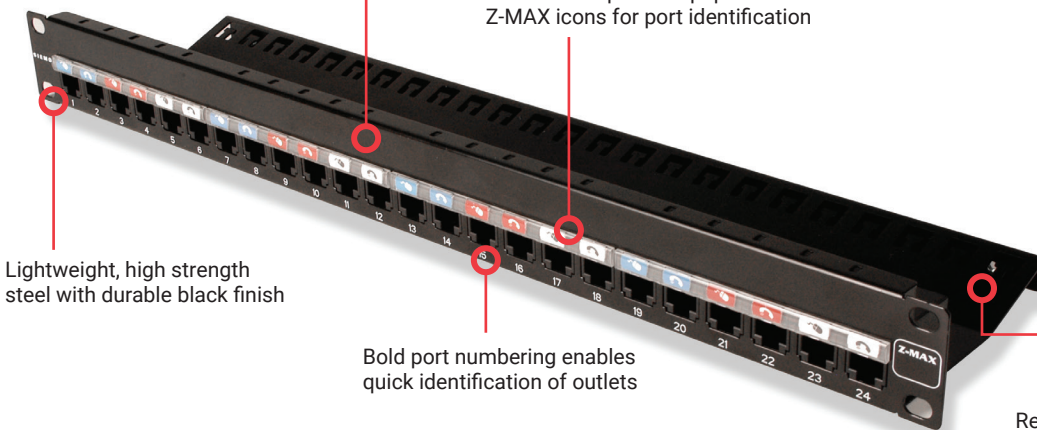
# Z-MAX® 6 UTP Patch Panels

Regional Availability - Global

Z-MAX 6 UTP patch panels harness unprecedented performance and reliability in a high-density modular solution. These complete patch panel kits combine 19 inch patch panels with Z-MAX 6 panel outlets to offer exceptional category 6 patching solution. The Z-MAX 6 UTP patch panels facilitate a world-class installation for data centers and telecommunications rooms by offering an attractive appearance combined with flexible labeling and color coding options. The Z-MAX panel modules feature a patent pending angled IDC contact pattern to exploit the widest module cross-section, enabling up to 48-ports in just 1U of rack space. Panels are offered in flat and angled styles with fixed or removable rear cable managers.

Additional space is provided for custom user labeling

High visibility snap-on magnifying label holders accept either paper labels or Z-MAX icons for port identification



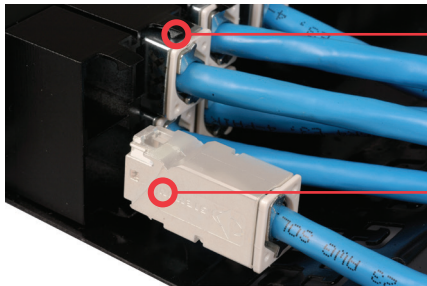
Lightweight, high strength steel with durable black finish

Bold port numbering enables quick identification of outlets

Rear cable manager ensures proper cable management practices for all installations

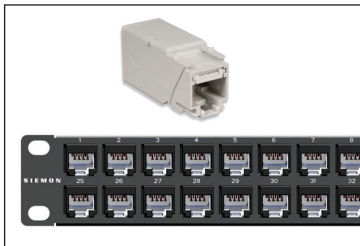
## Standards Compliance

- ANSI/TIA-568.2-E (Category 6)
- ISO/IEC 11801-1 Ed 1.0 (Category 6)
- IEEE 802.3an
- IEEE 802.3af (Type 1 PoE)
- IEEE 802.3at (Type 2 PoE)
- IEEE 802.3bt (Type 3 PoE)
- IEEE 802.3bt (Type 4 PoE)
- Power over HDBaseT (PoH)
- IEC 60603-7
- IEC 60603-7-4
- ANSI/TIA-1096-A

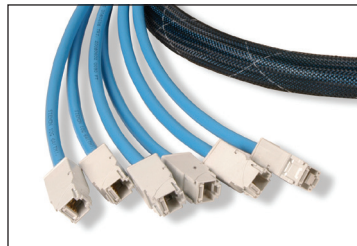


A quick-release lever allows individual modules to be easily removed even in high density applications

Panel outlets easily snap into place to accelerate installation



Panels may be ordered as complete kits which include the patch panel and Z-MAX panel modules



Leverage the quick-snap design by combining Z-MAX trunk assemblies with empty Z-MAX patch panels



High density version provides 48 ports in just 1U to reduce valuable rack space consumption

# Product Information

## Performance Specification Chart

### Mechanical - Panel

<b>Operating Temperature</b>	-10 to 60 °C, (14 to 140 °F)	<b>Dimensions (LxWxH)</b>	109.2 mmx 482.6mm x 44.2mm (4.30"x19.00" x1.74 " )
<b>Flammability Rating</b>	UL 94 V-0	<b>Mounting</b>	CEA-310-E 19-inch (482.6mm) rack
<b>Green Features</b>	RoHS, lead-free, halogen-free, PVC free	<b>Material - Panel</b>	18 gauge cold rolled steel, black e-coat
<b>Plastic Materials</b>	Flame retardant themoplastic		

## Ordering Information

### Panels with Removable Rear Wire Manager

Part Number	Description
-------------	-------------

Z6-P(X)-24	Z-MAX 24-Port, CAT 6 UTP patch panel kit with removable wire manager, 1 U, Black, with Outlets
Z6-P(X)-48	Z-MAX 48-Port, CAT 6 UTP patch panel kit with removable wire manager , 1 U, Black, with Outlets
Z-P(X)-24	Z-MAX 24-Port UTP Patch panel with removable wire manager, 1U, Black, Empty
Z-P(X)-48	Z-MAX 48-Port UTP Patch panel with removable wire manager, 1U, Black, Empty

Use (X) to specify mounting style: F = Flat, A = Angled

### Panels With Fixed Rear Wire Manager

Part Number	Description
-------------	-------------

Z6-PNL(X)-24K	Z-MAX 24-Port, CAT 6 UTP patch panel Kit, 1 U, Black, with Outlets
Z6-PNL(X)-U48K	Z-MAX 48-Port, CAT 6 UTP patch panel Kit, 1 U, Black, with Outlets
Z-PNL(X)-24E	Z-MAX 24-Port UTP Patch Panel, 1 U, Black, Empty
Z-PNL(X)-U48E	Z-MAX 48-Port UTP Patch Panel, 1 U, Black, Empty

Use (X) to specify mounting style: Blank = Flat, A = Angled

### Panel Accessories

Part Number	Description
-------------	-------------

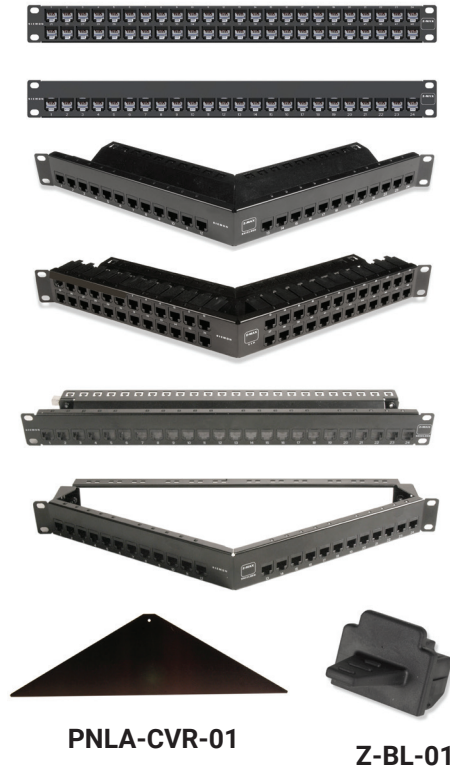
Z-PNL-PL24	Perforated label sheets for 24-port panels, blank on one side and numbered 1 to 24 on other. 7 sheets for up to 112 panels.
Z-PNL-PL48	Perforated label sheets for 48-port panels, blank on one side and numbered 1 to 48 on other. 14 sheets for up to 112 panels.
Z-PNL-PS	Patch panel label holder, bag of 25 (6-port wide)
Z6-P	Z-MAX Category 6 UTP panel outlet
PNLA-CVR-01	Angled panel cover, black
Z-BL-01	Z-MAX panel blank, bag of 10, black rubber, fits in empty Z-MAX panel opening as well as any RJ-45 port for dust protection.
Z-TOOL	Z-MAX termination tool*

\* included in panel kit only

Panels include Z-TOOL\*, label / icon holders, designation labels, cable ties, grounding lugs, and mounting hardware.

Note: 1U = 44.5mm (1.75 in.)

Termination technique may vary. See product instructions for details



Note: Z-MAX UTP panels are designed for use with Z-MAX UTP panel outlets only, for more information on panel outlets please reference outlet specifications sheet.

Because we continuously improve our products, Siemon reserves the right to change specifications and availability without prior notice.



SCAN TO DOWNLOAD  
SPEC SHEET

**North America**  
P: (1) 860 945 4200

**Mexico**  
P: (521) 556 387 7708/09/10

**Latin America**  
P: (571) 657 1950/51/52

**Europe**  
P: (44) 0 1932 571771

**Asia Pacific**  
P: (61) 2 8977 7500

**Siemon OEM Technologies**  
P: (1) 860 945 4213  
www.siemon.com/OEM

**China**  
P: (86) 215385 0303

**India, Middle East & Africa**  
P: (971) 4 3689743