

Z-MAX® 6A UTP Patch Panels

Regional Availability - Global

Z-MAX patch panels provide outstanding 10 Gb/s performance and aesthetics in a high-density, modular UTP solution. The Z-MAX UTP panels provide rapid and reliable installation by accelerating module mounting, and cable tie-down operations. In addition to traditional 24-port/1U flat and angled versions, the Z-MAX UTP panels are also available in 48-port/1U configurations to permit high density installations.

High-Density

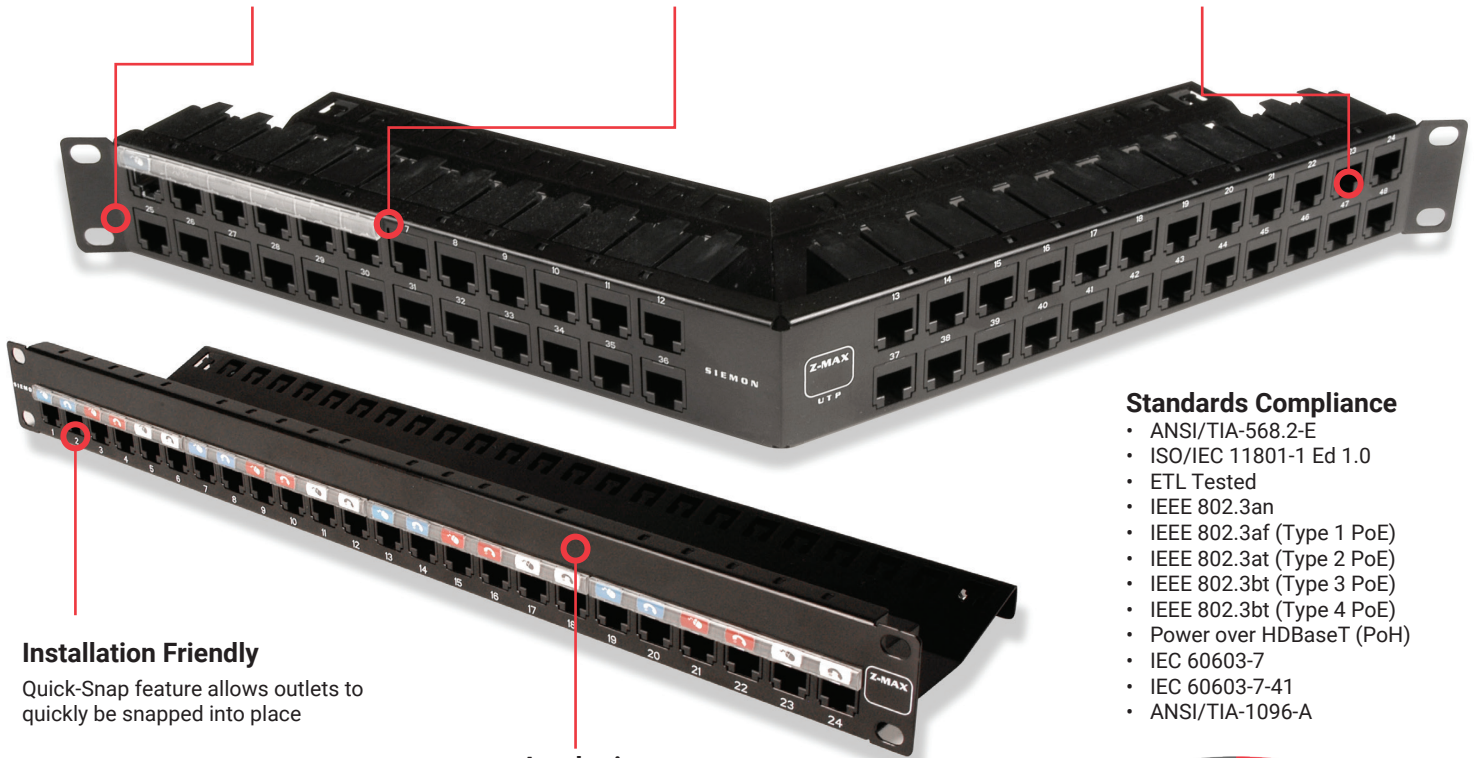
Provides 48 ports in just 1U while still meeting strict Category 6A Alien Crosstalk Parameters

Port Identification

High visibility magnifying labeling system enables quick identification of outlets

Durable

High strength steel with black finish and scratch/fade resistant port marking



Installation Friendly

Quick-Snap feature allows outlets to quickly be snapped into place

Aesthetics

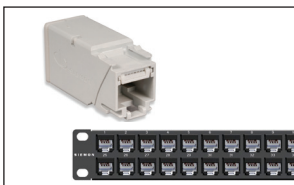
The Z-MAX panel provides a clean front surface to improve the installation appearance

Standards Compliance

- ANSI/TIA-568.2-E
- ISO/IEC 11801-1 Ed 1.0
- ETL Tested
- IEEE 802.3an
- IEEE 802.3af (Type 1 PoE)
- IEEE 802.3at (Type 2 PoE)
- IEEE 802.3bt (Type 3 PoE)
- IEEE 802.3bt (Type 4 PoE)
- Power over HDBaseT (PoH)
- IEC 60603-7
- IEC 60603-7-41
- ANSI/TIA-1096-A



Data | Power | Reach | Delivered



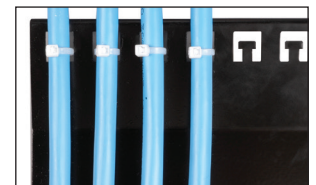
Panels available as complete kits including patch panel, Z-MAX panel outlets, and all necessary accessories. Empty panels are also available for use with Z-MAX trunk assemblies



A quick-release lever allows individual modules to be easily removed even in high density applications



Combine Z-MAX trunk assemblies (with pre-terminated panel outlets) and empty Z-MAX panels for rapid data center deployment.



Ensures proper cable management practices for all installations, critical to Category 6A performance.

Product Information

Performance Specification Chart

Mechanical - Panel

| | | | |
|------------------------------|---|---------------------------|--|
| Operating Temperature | -20°C to 60°C (-4°F to 140°F) | Dimensions (LxWxH) | 109.2mm x 482.6mm x 44.2mm (4.3 x 19.0 x 1.74 in.) |
| Flammability Rating | UL 94 V-0 | Mounting | CEA-310-E 19 in. (482.6mm) rack |
| Green Features | RoHS, lead-free, halogen-free, PVC free | Material - Panel | 18 gauge cold rolled steel, black e-coat |
| Plastic Materials | Flame retardant thermoplastic | | |

Ordering Information

Panels with Removable Rear Wire Manager

| Part Number | Description |
|-------------|--|
| Z6A-P(X)-24 | Z-MAX 24-port, Category 6A UTP patch panel with removable wire manager kit, 1U, black with outlets |
| Z6A-P(X)-48 | Z-MAX 48-port, Category 6A UTP Patch Panel with removable wire manager kit, 1U, black with outlets |
| Z-P(X)-24 | Z-MAX 24-port, UTP patch panel with removable wire manager, 1U, black, empty |
| Z-P(X)-48 | Z-MAX 48-port, UTP patch panel with removable wire manager, 1U, black, empty |

Use (X) to specify mounting style: F = Flat, A = Angled

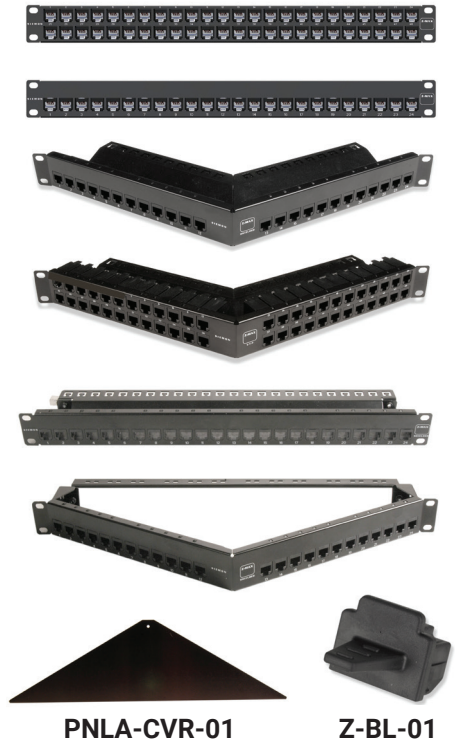
Panels With Fixed Rear Wire Manager

| Part Number | Description |
|-----------------|--|
| Z6A-PNL(X)-24K | Z-MAX 24-port, Category 6A UTP patch panel, kit, 1U, black, with outlets |
| Z6A-PNL(X)-U48K | Z-MAX 48-port, Category 6A UTP patch panel kit, 1U, black, with outlets |
| Z-PNL(X)-24E | Z-MAX 24-port UTP patch panel, 1U, black, empty |
| Z-PNL(X)-U48E | Z-MAX 48-port UTP patch panel, 1U, black, empty |

Use (X) to specify mounting style: (Blank) = Flat, A = Angled

Panel Accessories

| Part Number | Description |
|-------------|--|
| Z-PNL-PL24 | Perforated label sheets for 24-port panels, blank on one side and numbered 1 to 24 on other. 7 sheets for up to 112 panels. |
| Z-PNL-PL48 | Perforated label sheets for 48-port panels, blank on one side and numbered 1 to 48 on other. 14 sheets for up to 112 panels. |
| Z-PNL-PS | Patch panel label holder, bag of 25 (6-port wide) |
| Z6A-P | Z-MAX 6A UTP panel outlet |
| PNLA-CVR-01 | Angled panel cover, black |
| Z-BL-01 | Z-MAX panel blank, bag of 10, black rubber, fits in empty Z-MAX panel opening as well as any RJ-45 port for dust protection. |
| Z-TOOL | Z-MAX termination tool* |



*Included in panel kit only.

Panels include Z-TOOL*, label / icon holders, designation labels, cable ties, grounding lugs, and mounting hardware.

Note: 1U = 44.5mm (1.75 in.)



Note: Z-MAX UTP panels are designed for use with Z-MAX UTP panel outlets only.

Because we continuously improve our products, Siemon reserves the right to change specifications and availability without prior notice.



SCAN TO DOWNLOAD SPEC SHEET

North America
P: (1) 860 945 4200

Mexico
P: (521) 556 387 7708/09/10

Latin America
P: (571) 657 1950/51/52

Europe
P: (44) 0 1932 571771

Asia Pacific
P: (61) 2 8977 7500

Siemon OEM Technologies
P: (1) 860 945 4213
www.siemon.com/OEM

China
P: (86) 215385 0303

India, Middle East & Africa
P: (971) 4 3689743