

Clipsal® Pro and Iconic Series Faceplate Adapter

Work Area Products | Regional Availability – Australia & New Zealand

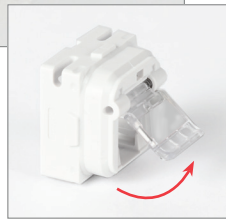


The Z-MAX®/UltraMAX™ Clipsal Pro adapters are designed for use with the Clipsal Pro and Iconic Series faceplates. The Clipsal adapters come in a range of colours, shutter door and non-shutter door variants, and as an adapter or adapter with outlets. They are designed to be used with Z-MAX/UltraMAX Siemon has specifically designed an adapter fit for use with Clipsal Pro and Iconic Series faceplates and Z-MAX/UltraMAX panel mount outlets. These adapters come in a range of colours as well as shutter door and non-shutter door options. Adapters may be purchased individually in bags of 24 or kitted with Z-MAX or UltraMAX Category 6 and 6A panel mount outlets.



Flawless Aesthetics

The adapter fits flush with both shutter door and non-shutter door adapters for a clean appearance in highly visible locations. The transparent colour option is matched to the Clipsal faceplate's translucent border for a seamless appearance.



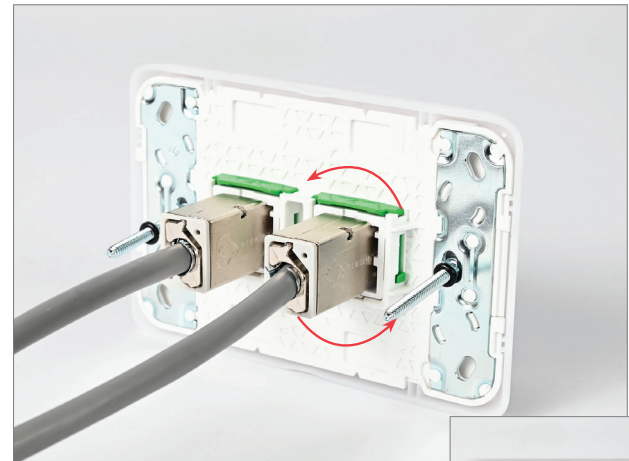
Multiple Options

Adapters sold separately or kitted with Z-MAX/UltraMAX shielded, UTP Category 6 and 6A panel outlets, providing users with a range of options to suit various installation needs.



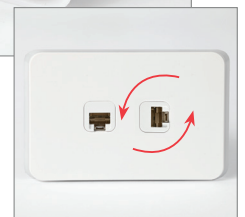
Protect Critical Connections

Fully compliant to the Australia TS009 (Clause 15.2.2.a) protection requirements. The shutter door accepts the Z-MAX/UltraMAX icons, reduces exposure to dust and other contaminants, and is self-closing.



Optimized Mounting

Adapter and outlet may be mounted vertically or horizontally to manage terminated cable bend radius and patch cord cable direction in tight spaces.



Product Information

Specifications

MATERIAL	High impact, Flame-retardant thermoplastic
FLAMMABILITY RATING	UL 94 V-0
MATERIAL COMPLIANCE	RoHS, Lead-free, Halogen-free, PVC free

Ordering Information

Clipsal® Pro/Iconic Adapters

CFPA - (XX) (X) S

COLOUR	DOOR OPTION
01 = Black	N = No Door
25 = Bright White	D = Door
03 = Red	
05 = Yellow	
06 = Blue	
07 = Green	
00 = Translucent	

Note: S = Standard Pack, 24-Count

Z-MAX/UltraMAX Icons are not included and sold separately.

Clipsal Pro/Iconic Adapter and Outlet Kits

CFPA - (XX) (X) - (XX, XXX, or XXXX) S

COLOUR	DOOR OPTION	OUTLET TYPE/CATEGORY
25 = Bright White*	N = No Door D = Door	U6 = UltraMAX™ Cat. 6 UTP U6A = UltraMAX Cat. 6A UTP Z6 = Z-MAX® Cat. 6 UTP Z6A = Z-MAX Cat. 6A UTP Z6AS = Z-MAX Cat. 6A Shielded

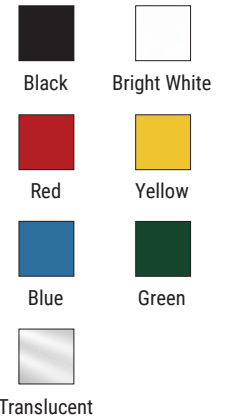
*Bright White is readily available. Additional colours available upon request and are available with longer lead times and MOQs. Contact Siemon Customer Service for more information.

Notes: S = Standard Pack, 24-Count

Z-MAX/UltraMAX Icons are not included and sold separately.

UltraMAX adapters/outlets include the PG2-U palm guard insert for outlet terminations.

Z-MAX adapters/outlets include the Z-TOOL™ for outlet terminations.



UltraMAX Outlets

Part Number	Description
U6-P00N(X)	UltraMAX Category 6, UTP, Panel Outlet
U6A-P00N(X)	UltraMAX Category 6A, UTP, Panel Outlet

X = (S) Single Standard Pack
(A) 24-Count Bulk Pack
(B) 100-Count Bulk Pack

UltraMAX palm guard insert is included in each standard pack of 20 outlets and bulk pack of 24 and 100 outlets.

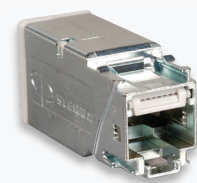
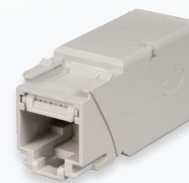


Z-MAX Outlets

Part Number	Description
Z6-P(X)	Z-MAX Category 6, UTP, Panel Outlet
Z6A-P(X)	Z-MAX Category 6A, UTP, Panel Outlet
Z6A-SP(X)	Z-MAX Category 6A, Shielded, Panel Outlet

X = (Blank) Single Standard Pack
(A) 24-Count Bulk Pack
(B) 100-Count Bulk Pack

Z-MAX outlet termination tool Z-TOOL is included in each standard pack of 50 outlets and bulk pack of 24 and 100 outlets.



For more information on our offerings, click links below:

Outlets: [Z-MAX UTP Outlets](#) | [Z-MAX Shielded Outlets](#) | [UltraMAX Outlets](#)

Termination Tools for Z-MAX and UltraMAX: [Copper Termination Tools](#)

For Z-MAX and UltraMAX Icons, click [here](#).



SCAN TO DOWNLOAD
SPEC SHEET

Because we continuously improve our products, Siemon reserves the right to change specifications and availability without prior notice.

North America
P: (1) 860 945 4200

Asia Pacific
P: (61) 2 8977 7500

Mexico
P: (521) 556 387 7708/09/10

Siemon OEM Technologies
P: (1) 860 945 4213
www.siemon.com/OEM

Latin America
P: (571) 657 1950/51/52

China
P: (86) 215385 0303

Europe
P: (44) 0 1932 571771

India, Middle East & Africa
P: (971) 4 3689743

www.siemon.com

