

# Z-MAX® 6A UTP Modular Cords

## - International

Combining the unparalleled performance of an exclusive PCB-based smart plug, alien crosstalk resistant construction and a host of innovative end-user features, Z-MAX 6A UTP modular cords set the bar for Category 6A UTP patching. Modular cords are often overlooked key components to ensure optimum channel performance. Siemon's Z-MAX category 6A UTP cords are 100% factory tested and feature a variety of product enhancements that contribute to the cord's superior electrical and mechanical performance. These cords guarantee reliable long-term category 6A application assurance throughout the life of the warranty. The cable used to manufacture these cords exceeds the specifications set forth by both ANSI/TIA-568.2-E and ISO/IEC 11801-1Ed 1.0.

### High Performance Cable

Z-MAX 6A UTP cords feature a shield barrier construction for excellent alien crosstalk performance and heat dissipation.

### Jacket

Stranded cords meet flame resistance requirements for both CM and LS0H. Solid cords meet LS0H as specified by part number.

### STANDARDS COMPLIANCE

- ANSI/TIA-568.2-E
- TIA-968-B
- TIA-1096-A
- ISO/IEC 11801-1
- IEC 60603-7
- CM: cUL US Listed
- LSOH: IEC 60332-3-22, IEC 60332-1, 60754, 61034

### Low Profile Boot Design

Optimizes side-stackability of modular cords and allows use in even the most dense equipment.

### APPLICATIONS SUPPORT

- 10GBASE-T
- 1000BASE-T
- 100BASE-T
- 10BASE-T
- HDBASE-T
- IEEE 802.3af (Type 1 PoE)
- IEEE 802.3at (Type 2 PoE)
- IEEE 802.3bt (Type 3 PoE)
- IEEE 802.3bt (Type 4 PoE)
- Power Over HDBaseT (PoH)

### Cantilevered Latch Guard

Allows latch activation from further back on the boot for superior accessibility in high density environments.

### Superior Performance Consistency

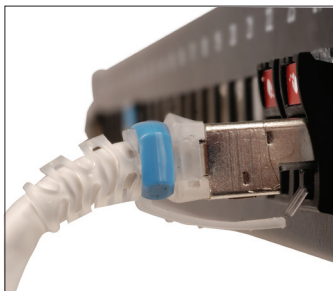
Precision PCB-based conductor terminations eliminate the performance variability of traditional crimp-style terminations. Rear contacts maintain cable twist to point of termination and provide robust strain relief.

### Integrated PCB

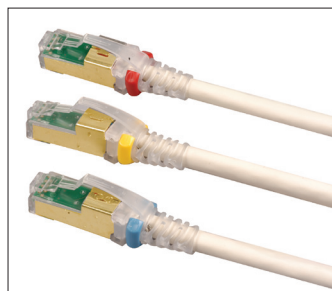
PCB equipped Smart Plugs optimize signal tuning for exceptional transmission. Solderless, press-fit contact design ensures long-term reliability.



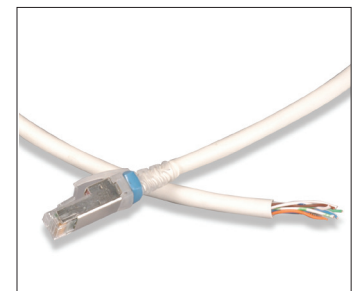
Data | Power | Reach | Delivered



Cords are 100% transmission tested to ensure compliance with applicable standards requirements.



Removable clips allow field color coding even when cords are connected.



Solid single and double ended assemblies are available for consolidation point and equipment cord applications.

# Product Information

## PERFORMANCE SPECIFICATIONS\*

### ELECTRICAL

Contact Resistance	10 mΩ
Input to Output Resistance	200 mΩ
Min. Dielectric Withstand Voltage (contact to contact)	1000 V DC or AC peak
Insulation Resistance	500 mΩ
Compatibility	Category 6A, 6 and 5e
Current Rating @ 25° C	1.5 A
Power over Ethernet	PoE (Type 1,2,3,4) PoH

### MECHANICAL - GENERAL

Operating Temperature	-20 to 75°C, (-4 to 167°F)
Flammability Rating	UL 94 V-0
Green Features	RoHS, lead-free, halogen-free, PVC free
Plug Housing Materials	Polycarbonate
Contact Materials	50 micro inches gold plating or equivalent
Plastic Materials	Flame retardant thermoplastic
Marking	P/N, length, performance level

### MECHANICAL - PLUG

Number of Plug Insertion Cycles	2500
Min. Plug Retention Force	50N (11.2 lbf)
Plug Compatibility	Compatible with RJ45 outlets
Cable to Plug Tensile Strength (min.)	20 lbs.

### MECHANICAL - CABLE (STRANDED)

Wire Size Range (Nominal)	26 AWG 7x34 Stranded bare copper
Cable OD (Nominal)	6.3mm (0.25 in.)
Wiring	T568A/B
Jacket type	CM/LS0H
Bend Radius	25mm (1.0 in.)

### MECHANICAL - CABLE (SOLID)

Wire Size Range (Nominal)	23 AWG Solid bare copper
Cable Construction	UTP
Cable OD (Nominal)	7.7mm (0.31 in.)
Wiring	T568A/B
Jacket type	LS0H
Bend Radius	30mm (1.18 in.)

## Ordering Information

ZM6A-(XX)M-(XX) ----- Z-MAX 6A UTP, double-ended, stranded modular cord, clear boot, T568A/B, CM/LS0H

#### Length

01 = 1m (3.3 ft.)  
 1.5 = 1.5m (5 ft.)  
 02 = 2m (6.6 ft.)  
 03 = 3m (9.8 ft.)  
 04 = 4m (13.1 ft.)  
 05 = 5m (16.5 ft.)  
 7.5 = 7.5m (24.6 ft.)

#### Jacket Colour

01 = Black    05 = Yellow  
 02 = White    06 = Blue  
 03 = Red    07 = Green  
 04 = Grey    09 = Orange

ZC6A-(XX)M(X)-L(X)----- Z-MAX 6A UTP, solid modular cord, violet jacket, clear boot, LS0H

#### Length

03 = 3m (10 ft.)  
 05 = 5m (16.4 ft.)  
 10 = 10m (33 ft.)  
 15 = 15m (49 ft.)  
 20 = 20m (65.6 ft.)

#### Plugs

(Blank) = Single-Ended  
 D = Double-ended (T568A/B)

#### Wiring

A = T568B  
 T = T568A

Add "B" to end of part number for bulk project pack of 100 cords.

Cable assembly constructed with EU CPR rated cable - E<sub>ca</sub>

CLIP-(XX) ----- Colour coding clip, bag of 25

#### Clip Colour

01 = Black    04 = Grey    07 = Green  
 02 = White    05 = Yellow    08 = Violet  
 03 = Red    06 = Blue    09 = Orange



SCAN TO DOWNLOAD SPEC SHEET

Because we continuously improve our products, Siemon reserves the right to change specifications and availability without prior notice.

**North America**  
 P: (1) 860 945 4200

**Mexico**  
 P: (521) 556 387 7708/09/10

**Latin America**  
 P: (571) 657 1950/51/52

**Europe**  
 P: (44) 0 1932 571771

**Asia Pacific**  
 P: (61) 2 8977 7500

**Siemon OEM Technologies**  
 P: (1) 860 945 4213  
[www.siemon.com/OEM](http://www.siemon.com/OEM)

**China**  
 P: (86) 215385 0303

**India, Middle East & Africa**  
 P: (971) 4 3689743