

Z-MAX™ 6A SHIELDED MODULAR CORDS - US

The Z-MAX patch cord is a primary driver of the Z-MAX system's exceptional performance. The Z-MAX smart plug design features a printed circuit board (PCB), normally only found in outlets, to achieve high performance tuning. The PCB also allows the incorporation of advanced contact technology to provide decreased variability and greater reliability over traditional crimp-type plugs.

Combined with fully shielded alien crosstalk resistant cable construction and a host of innovative, user-friendly features, the shielded Z-MAX 6A modular cords are the ultimate category 6A cord.



PATENTED



Z-MAX™

Stranded modular cords feature category 7A S/FTP stranded cable for optimal transmission performance while effectively eliminating alien crosstalk

Boots feature an ultra slim design and integral latch guard for high-density applications and snag resistance when pulling through pathways or managers

Internal -PCB based rear contacts eliminate pair splitting and crossing to maintain cable pair geometry

Patented PCB-based smart plug optimizes signal tuning for consistent, exceptional transmission performance

Front contacts are preterminated to the -PCB, eliminating variable contact heights due to crimping

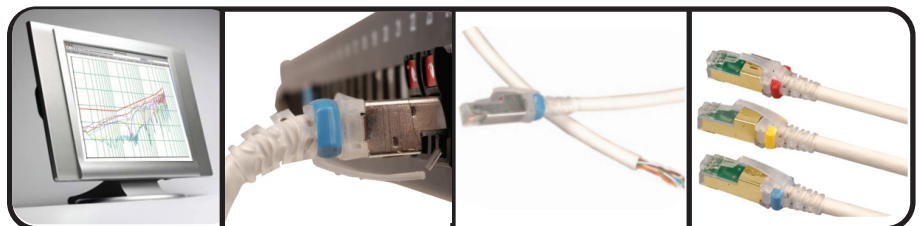
Fixed-position front contacts ensure plug quality and consistent mating with outlets

Terminating pairs to the rear contacts on the PCB reduces the amount of pair untwisting, improving performance and consistency

360 degree shield coverage for exceptional shielding effectiveness

STANDARDS COMPLIANCE

- ANSI/TIA-568-C.2
- ISO/IEC 11801 Ed 2.2
- IEEE 802.3an (10Gbase-T)
- IEEE 802.3af (PoE)
- IEEE 802.3at (PoE+)
- IEC 60603-7
- UL 1863 and CSA-C22.2 No. 182.4-M90
- IEC 60332-1 (LSOH)
- IEC 60754 (LSOH)
- IEC 61034 (LSOH)
- ANSI/TIA-1096-A
- IEC-60603-7-51
- Anatel Resolution No.242,2000



Cords are 100% transmission tested to ensure compliance with applicable standards requirements

Boot and integrated strain relief ensures proper bend relief, critical for category 6A performance

Solid Z-MAX 6A cords are available for consolidation point or cross-connect applications

Optional colored clips enable field color coding

PRODUCT INFORMATION

Performance Specifications:

ELECTRICAL	
Contact Resistance	10 mΩ
Input to Output Resistance	200 mΩ
Min. Dielectric Withstand Voltage (contact to contact)	1000 V DC or AC peak
Insulation Resistance	500 mΩ
Compatibility	Backwards to cat 5e and cat 6
Current Rating	1.5 A
PoE	Suitable for PoE and PoE+
Surface Transfer Impedance	< 10 mΩ/m @ 10 MHz
MECHANICAL – GENERAL	
Operating Temperature	-10 to 60 °C, (14 to 140 °F)
Flammability Rating	UL 94 V-0
Green Features	RoHS, lead-free, halogen-free, PVC free
Plug Housing Material	Polycarbonate
Contact Materials	50 microinches gold plating or equivalent
Plastic Materials	Flame retardant thermoplastic
Screen	360 degree enclosure
Marking	P/N, length, performance level, QC
MECHANICAL – PLUG	
Number of Plug Insertion Cycles	2500
Min. Plug Retention Force	50N
Plug Compatibility	Compatible with RJ45 outlets
Cable to Plug Tensile Strength (min)	20 lbs

MECHANICAL – CABLE (STRANDED)	
Wire Size Range (nominal)	26 AWG 7x32 Stranded tinned copper
Cable Construction	S/FTP
Cable O.D. (nominal)	6.35mm (0.25 in.)
Wiring	T568A/B
Jacket Type	CM/LSOH
Bend Radius	50mm (2in.)

MECHANICAL – CABLE (SOLID)	
Wire Size Range (nominal)	23 AWG Solid bare copper
Cable Construction	F/UTP
Cable O.D. (nominal)	7.37mm (0.29 in.)
Wiring	T568A or T568B
Jacket Type	CMR or CMP
Bend Radius	50mm (2in.)



Z-MAX™ 6A Shielded Stranded (S/FTP) Modular Cords:

ZM6A-S(XX)-(XX) Z-MAX 6A shielded double ended stranded modular cord, colored jacket with clear boot, T568A/B, CM/LSOH,

Use 1st (XX) to specify cable cord length:
03 = 0.9m (3 ft.), 05 = 1.5m (5 ft.), 07 = 2.1m (7 ft.),
10 = 3.1m (10 ft.), 15 = 4.6m (15 ft.), 20 = 6.1m (20 ft.)

Use 2nd (XX) to specify cable color:
01 = black, 02 = white, 03 = red, 04 = gray, 05 = yellow,
06 = blue, 07 = green, 08 = violet, 09 = orange

ⓑ Add "B" for bulk project pack of 100 modular cords

Color Coding Clips:

CLIP-(XX) Color coding clip, bag of 25
Use (XX) to specify color: 01=black, 02=white, 03=red, 04=gray,
05=yellow, 06=blue, 07=green, 08 = violet, 09 = orange



Because we continuously improve our products, Siemon reserves the right to change specifications and availability without prior notice.
Z-MAX™ is a trademark of Siemon

North America
Watertown, CT USA
Phone (1) 860 945 4200 US
Phone (1) 888 425 6165 Canada

Europe/Middle East/Africa
Surrey, England
Phone (44) 0 1932 571771

Asia/Pacific
Shanghai, P.R. China
Phone (86) 21 5385 0303

Latin America
Bogota, Colombia
Phone (571) 657 1950

Z-MAX 6A Shielded Solid (F/UTP) Modular Cords:

ZC6A-S(XX)A-R Z-MAX 6A shielded, single-ended solid modular cord, blue jacket with clear boot, T568B, CMR

ZC6A-S(XX)T-R Z-MAX 6A shielded, single-ended solid modular cord, blue jacket with clear boot, T568A, CMR

ZC6A-S(XX)A-P Z-MAX 6A shielded, single-ended solid modular cord, blue jacket with clear boot, T568B, solid modular cord, CMP

ZC6A-S(XX)T-P Z-MAX 6A shielded, single-ended solid modular cord, blue jacket with clear boot, T568A, CMP

Use (XX) to specify cord length:
10 = 3.1m (10 ft.), 20 = 6.1m (20 ft.), 30 = 9.1m (30 ft.),
40 = 12.2m (40 ft.), 50 = 15.2m (50 ft.), 60 = 18.3m (60 ft.)

ⓓ Add "D" for double-ended solid cords

For additional resource information:

Visit our web site at www.siemon.com