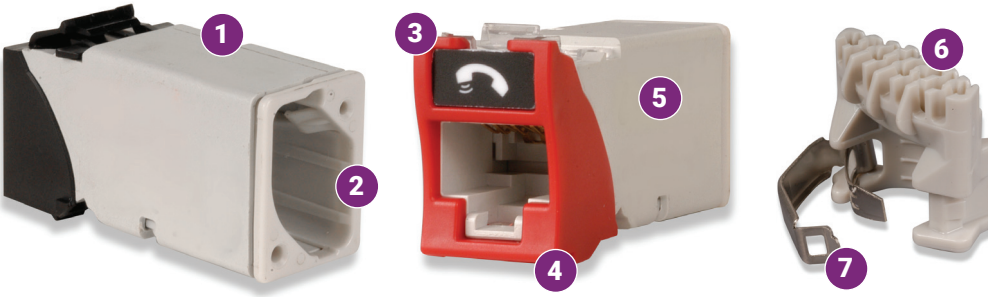


# Z-MAX® Copper Connectivity System

## 6, 6A UTP Outlets | Regional Availability – Global



The UTP Z-MAX outlet offers best-in-class performance in every critical specification, exceeding all Category 6 and 6A performance requirements, including alien crosstalk. Its innovative features not only speed and simplify termination, but remove installation variability for consistently high and repeatable performance – every termination, every time!



### 1. Compact

Slim and side-stackable for high-density applications. Supports “pass-thru” feature to mount from the front or rear of a faceplate.

### 2. Enclosed IDC Termination

IDC terminations are fully enclosed in the outlet housing for robust protection.

### 3. High-Visibility Icon System

Printed icons allow designation for voice/data applications and also provide an additional color coding option.

### 4. Compliant

Is compliant with UL2043 and is appropriate for use in air handling spaces.

### 5. Fastest Termination Time

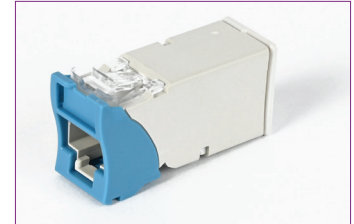
Zero-Cross™ termination module and 2-step Z-TOOL™ termination process combine for best-in-class termination time.

### 6. Guided Termination Features

Linear lacing channels guide correct conductor placement while 2-sided color-coding provides wiring verification before and after lacing.

### 7. Robust Hinged Cable Retention

Clip accommodates multiple cable diameters.



Z-MAX UTP Hybrid – No Door Outlet



Z-MAX UTP Keystone Outlet

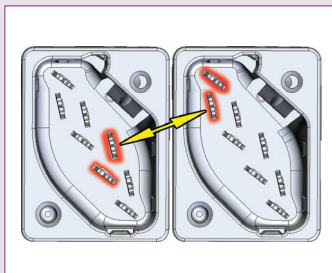


Z-MAX UTP Panel Outlet



### Flexibility and Simplified Ordering

A single hybrid outlet supports both angled and flat mounting orientations.



### AXT Cat. 6A Performance

Diagonal IDC alignment maximizes outlet to outlet pair separation to achieve AXT performance in high-density environments.



### Spring Door Option

Spring door option minimizes exposure to dust and other contaminants.

## ELECTRICAL SPECIFICATIONS

CONTACT RESISTANCE	20 mΩ
INPUT TO OUTPUT RESISTANCE	200 mΩ
MIN. DIELECTRIC WITHSTAND VOLTAGE (CONTACT TO CONTACT)	1000 V DC or AC peak
MIN. DIELECTRIC WITHSTAND VOLTAGE	1500 V DC or AC peak
INSULATION RESISTANCE	500 MΩ
COMPATIBILITY	Backwards to Cat. 5e
CURRENT RATING	1.5 A
PoE	Suitable for PoE Type 1, 2, 3, 4 and PoH

## MECHANICAL – GENERAL

OPERATING TEMPERATURE	-10 to 75°C (14 to 167°F)
FLAMMABILITY RATING	UL 94 V-0
ECO-FRIENDLY FEATURES	RoHS, Lead-free, Halogen-free, PVC-free, Eco-friendly packaging (bulk packaging only)
HOUSING MATERIAL	Glass-reinforced nylon
CONTACT MATERIALS	Copper alloy, plated with 1.27 microns (50 micro inches) minimum thick gold or equivalent at contact interface
PLASTIC MATERIALS	Flame retardant thermoplastic
DIMENSIONS (L X W X H)	41.2 x 14.5 x 21.1mm (1.6 x .570 x .832 in.)

## MECHANICAL – TERMINATION

WIRE SIZE RANGE (NOMINAL)	22-26 AWG solid and stranded
WIRE INSULATION DIAMETER RANGE (MAX)	1.48mm (0.058 in.)
CONDUCTOR OD SIZE (MAX)	0.60mm (0.023 in.)
CABLE OD (MAX)	9mm (0.354 in.)
RE-TERMINATIONS	5
WIRING	T568A/B

## MECHANICAL – JACK

NUMBER OF PLUG INSERTION CYCLES	2500
MINIMUM PLUG RETENTION FORCE	50N (11.24 lbf)
PLUG COMPATIBILITY	Compatible with RJ145 (8-position) or RJ11 (6-position) plugs

## COMPLIANCE

ANSI/TIA-568.2-E
ISO/IEC 11801-1 Ed 1.0
ETL Tested
IEEE 802.3an
IEEE 802.3af (Type 1)
IEEE 802.3at (Type 2)
IEEE 802.3bt (Type 3 and Type 4)
Power over HDBaseT (PoH)
ANSI/TIA 1096-A
IEC 60603-7-51
IEC 60512-99-002 (3rd party verified)



Data | Power | Reach | Delivered

# Ordering Information

## Z-MAX® 6, 6A UTP Outlets, T568A/B

Z (X or XX) - (X) (XX) (X) (X)

PERFORMANCE CATEGORY	MOUNTING STYLE	BEZEL COLOR	DOOR OPTION	PACKAGE TYPE
6 = 6 UTP 6A = 6A UTP	(Blank) = Hybrid Flat/Angled K = Keystone* P = Panel**	(Blank) = No Color (Panel Only) 01 = Black 02 = White 03 = Red 04 = Gray 05 = Yellow 06 = Blue 07 = Green 09 = Orange 20 = Ivory 80 = Light Ivory	(Blank) = No Door D = Door	(Blank) = Single Standard Pack A = 24-Count Bulk Pack*** B = 100-Count Bulk Pack***

\*Keystone version is designed for integration with various third-party mounting products and is not compatible with standard Siemon MAX mounting products. Keystone versions are also not compatible with icons and do not have door options.

\*\*Z-MAX UTP panel outlets are designed for use with Z-MAX UTP panels only.

\*\*\*Eco-friendly hybrid, keystone and panel outlet bulk packs sold with MoQ of 24 and 100 and order increment of 24 and 100 outlets.

Outlet terminates UTP cable constructions with 23 – 26 AWG (0.64 – 0.51mm) solid and 26 AWG (0.48mm) stranded conductors, with up to 0.60mm diameter conductors and up to 1.48mm diameter over insulation.

Z-MAX outlet termination tool Z-TOOL is included in each standard pack of 50 outlets and bulk pack of 24 and 100 outlets.

Each Z-MAX 6 and 6A UTP hybrid flat/angled outlet includes 1 printed icon set with the following color/print options.



**Front**  
1 Red Data  
1 Blue Data  
1 Bezel Color-Matching Data  
1 White Blank



**Back**  
1 Red Voice  
1 Blue Voice  
1 Bezel Color-Matching Voice  
1 Bezel Color-Matching Blank



It is recommended to use 10G MAX faceplates with Z-MAX 6A UTP outlets to achieve full Z-MAX warranty performance.

Side stacking Z-MAX 6A UTP outlets in standard faceplates will result in minimum compliant alien crosstalk performance.



24-Count Bulk Pack for reference.

## Z-MAX Accessories

Part Number	Description
Z-BL-01	Panel Blank, Bag of 10, Black rubber, Fits in empty Z-MAX®/UltraMAX panel opening as well as any RJ-45 port for dust protection
Z-ICON-(XX) B	Icon, Z-MAX/UltraMAX, Box of 100
UZD-(XX)	Hybrid Outlet Bezel with Door & Latch, Z-MAX/UltraMAX, Box of 25
UZH-(XX)	Hybrid Outlet Bezel & Latch, Z-MAX/UltraMAX, Box of 25
UZK-(XX)	Keystone Outlet Bezel, Z-MAX/UltraMAX, Box of 25

**XX = Color**

01 = Black	06 = Blue	25 = Bright White
02 = White	07 = Green	80 = Light Ivory
03 = Red	08 = Violet	82 = Alpine White
04 = Gray	09 = Orange	
05 = Yellow	20 = Ivory	



SCAN TO DOWNLOAD SPEC SHEET

Because we continuously improve our products, Siemon reserves the right to change specifications and availability without prior notice.

**North America**  
P: (1) 860 945 4200

**Mexico**  
P: (521) 556 387 7708/09/10

**Latin America**  
P: (571) 657 1950/51/52

**Europe**  
P: (44) 0 1932 571771

**Asia Pacific**  
P: (61) 2 8977 7500

**Siemon OEM Technologies**  
P: (1) 860 945 4213  
www.siemon.com/OEM

**China**  
P: (86) 215385 0303

**India, Middle East & Africa**  
P: (971) 4 3689743