

Z-MAX® Copper Connectivity System

Z-MAX 45 Category 6A Shielded Outlets | Regional Availability – Global



Siemon's patented Z-MAX 45 shielded Category 6A outlet offers a shorter, compact design and the ability to terminate cable at a 45-degree angle for easier exiting of cable from shallow back boxes or wall-mounted raceway systems, while maintaining proper bend radius of the cable. The Z-MAX 45 offers the same best-in-class performance you've come to expect from Siemon's family of Z-MAX products, exceeding all Category 6A performance requirements, including alien crosstalk. The innovative linear lacing features and tool enable fast terminations, while removing installation variability for consistent, repeatable performance.



1. Multiple Cable Types

Z-MAX 45 Outlet terminates cable constructions with 22 – 26 AWG solid and stranded conductors.

2. Configurable Termination Positions

Cable can be terminated to exit outlet at a 45-degree angle in two different directions to accommodate cables entering from the side, top or bottom in raceway or back boxes.

3. High-Visibility Icon System

Provide designation for voice/data applications and color coding.

4. Enhanced Shielding Effectiveness

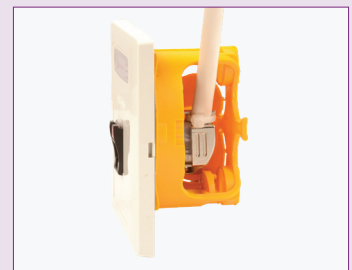
High level of shielded effectiveness exceeds ISO 360-degree shielded requirements via durable die-cast housing and rear ground cap for enhanced support of high frequency data rates.



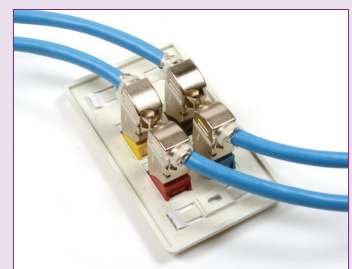
Data | Power | Reach | Delivered



Linear lacing channels and the tool's color-coded guide ensured correct conductor placement and offers a best-in-class termination time and repeatable performance.



Shorter outlet body with 45-degree termination reduces depth by 40% compared to standard outlets to accommodate shallow back boxes without exceeding bend radius and the hybrid design supports both flat and angled mounting orientations.



Unlike 90-degree side entry outlets, the 45-degree angle of the Z-MAX45 enables side stacking for high-density applications, while the plastic bezels prevent contact between metal housings for superior alien crosstalk performance.

ELECTRICAL SPECIFICATIONS

| | |
|--|---|
| CONTACT RESISTANCE | 20 mΩ |
| INPUT TO OUTPUT RESISTANCE | 200 mΩ (single conductors), 100 mΩ (shield) |
| MIN. DIELECTRIC WITHSTAND VOLTAGE (CONTACT TO CONTACT) | 1000 V DC or AC peak |
| MIN. DIELECTRIC WITHSTAND VOLTAGE | 1500 V DC or AC peak |
| INSULATION RESISTANCE | 500 mΩ |
| COMPATIBILITY | Backwards to Cat. 5e and Cat. 6 |
| CURRENT RATING | 1.5 A |
| PoE | Suitable for PoE Type 1, 2, 3, 4 and PoH |

MECHANICAL – GENERAL

| | |
|------------------------|--|
| OPERATING TEMPERATURE | -10 to 75°C (14 to 167°F) |
| FLAMMABILITY RATING | UL 94 V-0 |
| ECO-FRIENDLY FEATURES | RoHS, Lead-free, Halogen-free, PVC-free, Eco-friendly packaging (bulk packaging only) |
| HOUSING MATERIAL | Zinc die-cast |
| CONTACT MATERIALS | Copper alloy, plated with 1.27 microns (50 micro inches) minimum thick gold or equivalent at contact interface |
| PLASTIC MATERIALS | Flame retardant thermoplastic |
| DIMENSIONS (L X W X H) | 43.8 x 14.5 x 21.0mm (1.72 x .57 x .83 in.) |
| SHIELD | 360° enclosure |

MECHANICAL – TERMINATION

| | |
|--------------------------------------|------------------------------|
| WIRE SIZE RANGE (NOMINAL) | 22-26 AWG solid and stranded |
| WIRE INSULATION DIAMETER RANGE (MAX) | 1.60mm (0.063in.) |
| CONDUCTOR OD SIZE (MAX) | 0.65mm (0.026 in.) |
| CABLE OD (MAX) | 9mm (0.354 in.) |
| RE-TERMINATIONS | 5 |
| WIRING | T568A/B |

MECHANICAL – JACK

| | |
|---------------------------------|---|
| NUMBER OF PLUG INSERTION CYCLES | 2500 |
| MINIMUM PLUG RETENTION FORCE | 50N (11.24 lbf) |
| PLUG COMPATIBILITY | Compatible with RJ145 (8-position) or RJ11 (6-position) plugs |

COMPLIANCE

| |
|---------------------------------------|
| ANSI/TIA-568.2-E |
| ISO/IEC 11801-1 Ed 1.0 |
| IEC-61156 |
| IEC 60603-7 |
| IEC 60512-99-002 (3rd party verified) |
| UL 2043 & UL 1863 |
| 10BASE-T to 10GBASE-T |
| IEEE 802.3af (Type 1) |
| IEEE 802.3at (Type 2) |
| IEEE 802.3bt (Type 3 and 4) |
| Power over HDBaseT (PoH) |

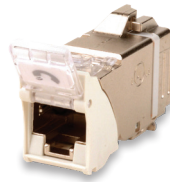


Ordering Information

Z-MAX® 45 Category 6A Shielded Outlet, T568A/B

Z6A - 45 - S (X) (XX) (X)

| MOUNTING STYLE | BEZEL COLOR | DOOR OPTION |
|---|--|---|
| (Blank) = Hybrid Flat/Angled K = Keystone* | 01 = Black 02 = White 03 = Red 04 = Gray 05 = Yellow 06 = Blue 07 = Green 09 = Orange 20 = Ivory 80 = Light Ivory | (Blank) = No Door D = Door (Hybrid Only) |



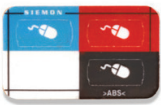
Spring door option minimizes exposure to dust and other contaminants.

*Keystone version is designed for integration with various third-party mounting products and is not compatible with standard Siemon MAX mounting products.

Keystone versions are also not compatible with icons and do not have door options.

Add "B" to end of part number for bulk project pack of 100 modules. Z-Tool-45 Termination Tool is included with quantities of 50 or more outlets or with any of bulk (B) order.

Each Z-MAX 6A hybrid outlet includes 1 printed icon set with the following color/print options.



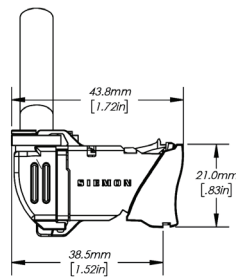
Front
1 Red Data
1 Blue Data
1 Bezel Color-Matching Data
1 White Blank



Back
1 Red Voice
1 Blue Voice
1 Bezel Color-Matching Voice
1 Bezel Color-Matching Blank

| Part Number | Description |
|---------------|---|
| Z-TOOL-45 | Z-MAX 45 Termination Tool |
| Z-BL-01 | Panel Blank, Bag of 10, Black rubber, Fits in empty Z-MAX®/UltraMAX panel opening as well as any RJ-45 port for dust protection |
| Z-ICON-(XX) B | Icon, Z-MAX/UltraMAX, Box of 100 |
| UZD-(XX) | Hybrid Outlet Bezel with Door & Latch, Z-MAX/UltraMAX, Box of 25 |
| UZH-(XX) | Hybrid Outlet Bezel & Latch, Z-MAX/UltraMAX, Box of 25 |
| UZK-(XX) | Keystone Outlet Bezel, Z-MAX/UltraMAX, Box of 25 |

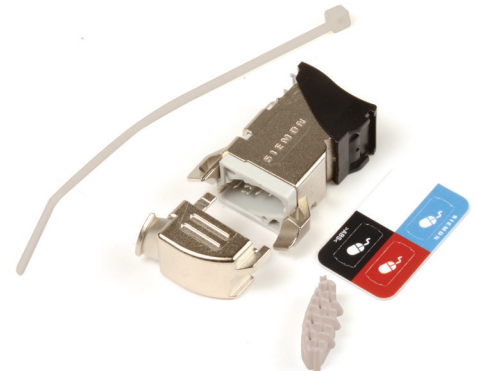
| XX = Color | | |
|-------------|-------------|-------------------|
| 01 = Black | 06 = Blue | 25 = Bright White |
| 02 = White | 07 = Green | 80 = Light Ivory |
| 03 = Red | 08 = Violet | 82 = Alpine White |
| 04 = Gray | 09 = Orange | |
| 05 = Yellow | 20 = Ivory | |



Hybrid Flat/Angled
Version Shown



Z-Tool-45
Z-MAX 45 Termination Tool



SCAN TO DOWNLOAD
SPEC SHEET

Because we continuously improve our products, Siemon reserves the right to change specifications and availability without prior notice.

North America
P: (1) 860 945 4200

Mexico
P: (521) 556 387 7708/09/10

Latin America
P: (571) 657 1950/51/52

Europe
P: (44) 0 1932 571771

Asia Pacific
P: (61) 2 8977 7500

Siemon OEM Technologies
P: (1) 860 945 4213
www.siemon.com/OEM

China
P: (86) 215385 0303

India, Middle East & Africa
P: (971) 4 3689743