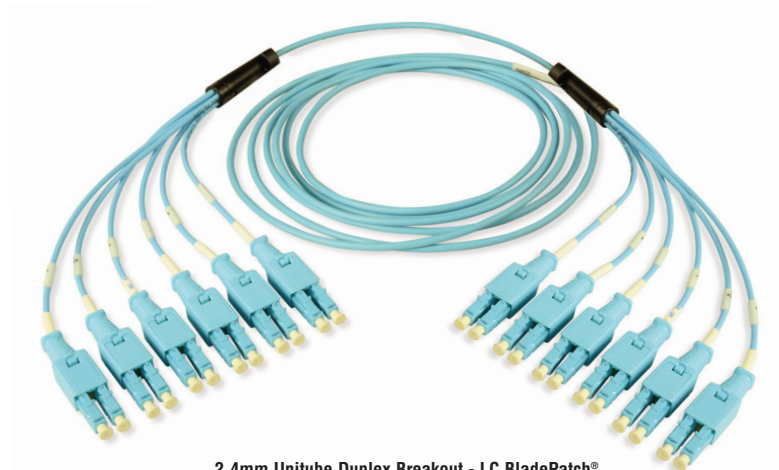
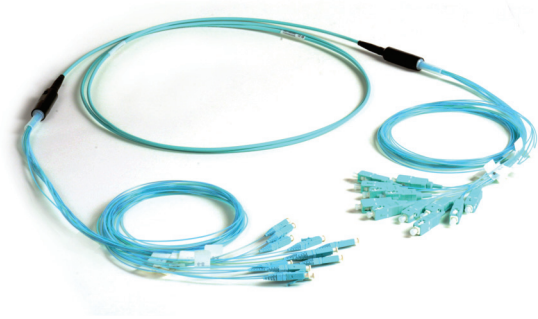


XGLO[®] LC BladePatch[®], SC, LC Fiber Trunks Europe - Euro Class Dca, Cca

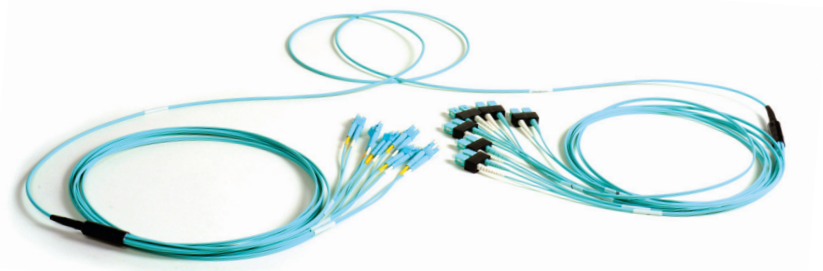
Siemon's Indoor RazorCore fiber trunks provide an efficient and cost effective alternative to individual field-terminated components. Combining factory terminated connectors with Siemon RazorCore reduced O.D. cable in a high-performance cable assembly, Siemon RazorCore fiber trunks were designed with Local Area Networks (LAN), Data Centers and Storage Area Networks (SAN) applications in mind. These assemblies allow up to 75% faster field installation times. Standard configurations also help maintain consistent cable layout and facilitate efficient moves, adds and changes. These precision cable assemblies are 100% inspected ensuring superior performance and quality. The RazorCore fiber trunks are available in Singlemode or Multimode performance with LC BladePatch, SC, LC connectivity.



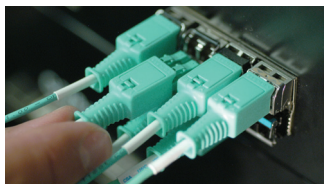
2.4mm Unitube Duplex Breakout - LC BladePatch[®]



900µm Simplex Breakout



2.0mm Duplex Breakout



LC BladePatch[®] —

Enhances installation and removal access in high density environments.

Low profile push-pull boot design optimizes side-stackability and accessibility

Fits with any standard LC adapter opening or LC SFP module.

Note: Fits compatible with industry compliant non-shutter LC adapters.

When using internal shutter LC adapters, the LC BladePatch is only compatible with the Siemon version.

Reduced Pathway Fill —

Siemon's RazorCore cable has significantly reduced cable O.D. resulting in less cable tray fill and pathway restrictions

Proper Orientation —

Each leg is designated for proper connector orientation

Multiple Fiber Types —

Available in OM3, and OM4 Multimode 50/125 laser optimized and OS1/OS2 Singlemode.

Flame Standards, CPR Qualification —

LSHF-FR (FRNC)

• IEC 60332-2, IEC 60754-1, IEC 60754-2, IEC 61034

• EN 50575, Class Eca, Dca, Cca s1a, d1, a1

Custom Configurations —

Available from 6 to 144 fiber counts in various lengths

Factory Terminated and Tested —

Every fiber cable assembly is factory terminated and tested for premium performance

XGLO[®] LC BladePatch, SC, LC Fiber Trunks Europe - Euro Class Dca, Cca

Ordering Information:

TFU(X)(X)(X)(X)(X)(X)(X)(X)(XXX)(X)

***Fibre Count**

A = 6
B = 8
C = 12
D = 16
E = 24
F = 36
G = 48
H = 72
J = 96
K = 144

Pulling Eye

A = Side A
B = Side B
C = Side A&B
D = None

Fibre Type

A = OS1/OS2, 62.5/125 Singlemode Yellow
L = OM3, XGLO 300 50/125 Multimode Aqua
V = OM4, XGLO 550 50/125 Multimode Aqua
E = OM4, XGLO 550 50/125 Multimode Erika Violet

Cable Type

L = Class Dca
C = Class Cca

*Note:
Class Dca is available in 6 thru 144 strand
Class Cca is available in 6 thru 24 strand

LEG Construction (Side A)

A = Simplex 900µm
B = Duplex 2.0mm
C = Uni-Tube Duplex 2.4mm LC BladePatch only
Z = Blunt Cut 250µm*

Unit of Measure

F = Feet
M = Metres

Cable Length

Length must be 3 digits
Example: 004 = 4m
012 = 12 ft.

Connector Type (Side B)

A = LC Multimode
B = LC UPC Singlemode
C = LC APC Singlemode
D = LC BladePatch Multimode RFP Polarity only
E = LC BladePatch UPC Singlemode RFP Polarity only
F = SC Multimode
G = SC UPC Singlemode
H = SC APC Singlemode
Z = Blunt Cut*

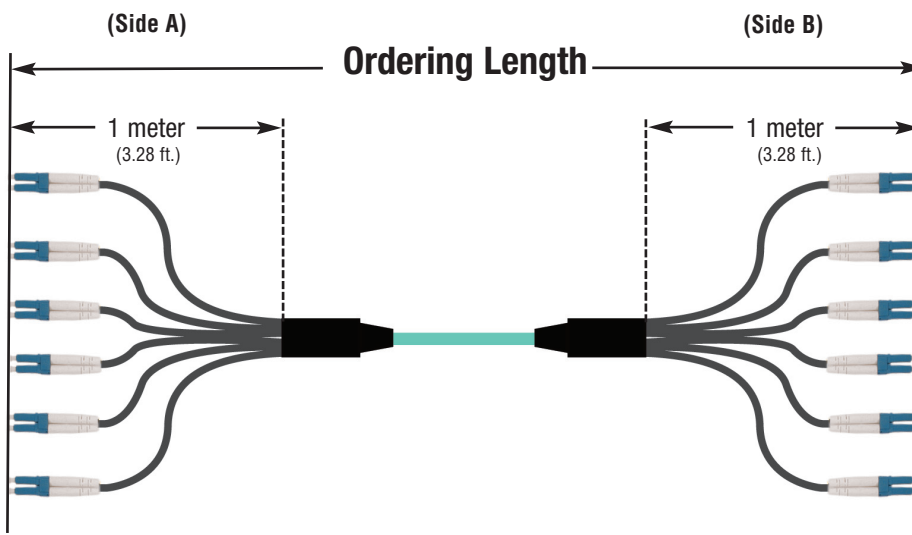
Connector Type (Side A)

A = LC Multimode
B = LC UPC Singlemode
C = LC APC Singlemode
D = LC BladePatch Multimode RFP Polarity only
E = LC BladePatch UPC Singlemode RFP Polarity only
F = SC Multimode
G = SC UPC Singlemode
H = SC APC Singlemode
Z = Blunt Cut*

LEG Construction (Side B)

A = Simplex 900µm
B = Duplex 2.0mm
C = Uni-Tube Duplex 2.4 LC BladePatch only
Z = Blunt Cut 250µm*

Blunt cuts are flush (no breakout length) and are only available with 250µm coated fibers color-coded per TIA-598-D
Ordering length is measured connector tip to connector tip.
Minimum order length is 3 meters (9.8 ft).



TIA-598-D Color Code	
Fiber/Connect or Number	Color
1	Blue
2	Orange
3	Green
4	Brown
5	Slate
6	White
7	Red
8	Black
9	Yellow
10	Violet
11	Rose
12	Aqua

Note: These products are made to order. Call for lead time and availability.

XGLO[®] LC BladePatch, SC, LC Fiber Trunks Europe - Euro Class Dca, Cca

CONNECTORS — Optical Specifications

Fiber Type	Performance Class	Max Insertion Loss (dB)	Min Return Loss (dB)
50/125 µm Laser Optimized Multimode (OM3,OM4)	XGLO	0.25	30
Singlemode UPC (OS1/OS2)	XGLO	0.40	55
Singlemode APC (OS1/OS2)	XGLO	0.40	65

CABLE — Optical and Physical Specifications (Nominal)

Jacket Type	Fiber Strand Count	Cable Diameter mm (in.)	Min Bend Radius Operational mm (in.)	Min Bend Radius Installation mm (in.)	Max Pulling Eye Diameter mm (in.)	*Required Duct Diameter mm (in.)
LSOH D _{ca}	6	3.0 (0.12)	30 (1.2)	45 (1.8)	44.5 (1.75)	69.9 (2.75)
	8	3.0 (0.12)	30 (1.2)	45 (1.8)	44.5 (1.75)	69.9 (2.75)
	12	3.0 (0.12)	30 (1.2)	45 (1.8)	44.5 (1.75)	69.9 (2.75)
	16	3.8 (0.15)	38 (1.5)	57 (2.2)	44.5 (1.75)	69.9 (2.75)
	24	3.8 (0.15)	38 (1.5)	57 (2.2)	44.5 (1.75)	69.9 (2.75)
	36	6.5 (0.26)	65 (2.6)	98 (3.3)	63.5 (2.5)	88.9 (3.5)
	48	6.5 (0.26)	65 (2.6)	98 (3.3)	63.5 (2.5)	88.9 (3.5)
	72	7.0 (0.28)	70 (2.8)	105 (4.1)	63.5 (2.5)	88.9 (3.5)
	96	12.5 (0.49)	125 (4.9)	188 (7.4)	88.9 (3.25)	114.3 (4.5)
LSOH C _{ca}	144	14.9 (0.59)	149 (5.9)	224 (8.8)	88.9 (3.25)	114.3 (4.5)
	6	3.0 (0.12)	30 (1.2)	60 (2.3)	44.5 (1.75)	69.9 (2.75)
	8	3.0 (0.12)	30 (1.2)	60 (2.3)	44.5 (1.75)	69.9 (2.75)
	12	3.0 (0.12)	30 (1.2)	60 (2.3)	44.5 (1.75)	69.9 (2.75)
	16	3.6 (0.14)	30 (1.2)	72 (2.8)	44.5 (1.75)	69.9 (2.75)
	24	3.6 (0.14)	30 (1.2)	72 (2.8)	44.5 (1.75)	69.9 (2.75)

*Pulling eye assembly shall be capable of passing through these minimum duct diameter requirements during product installation.
Pulling eye max pull force 18.1kg (40lbs)

Because we continuously improve our products, Siemon reserves the right to change specifications and availability without prior notice.

**Worldwide Headquarters
North America**
Watertown, CT USA
Phone (1) 860 945 4200

**Regional Headquarters
Europe Africa**
Chertsey, Surrey, England
Phone (44) 0 1932 571771

**Regional Headquarters
China**
Shanghai, P.R. China
Phone (86) 215385 0303

**Regional Headquarters
Latin America**
Bogota, Colombia
Phone (571) 657 1950/51/52

**Regional Headquarters
India Middle East**
Dubai, United Arab Emirates
Phone (971) 4 3689743

**Regional Headquarters
Asia Pacific**
Sydney, Australia
Phone (61) 2 8977 7500

**Siemon Interconnect Solutions
Watertown, CT USA**
Phone (1) 860 945 4213 US
www.siemon.com/SIS