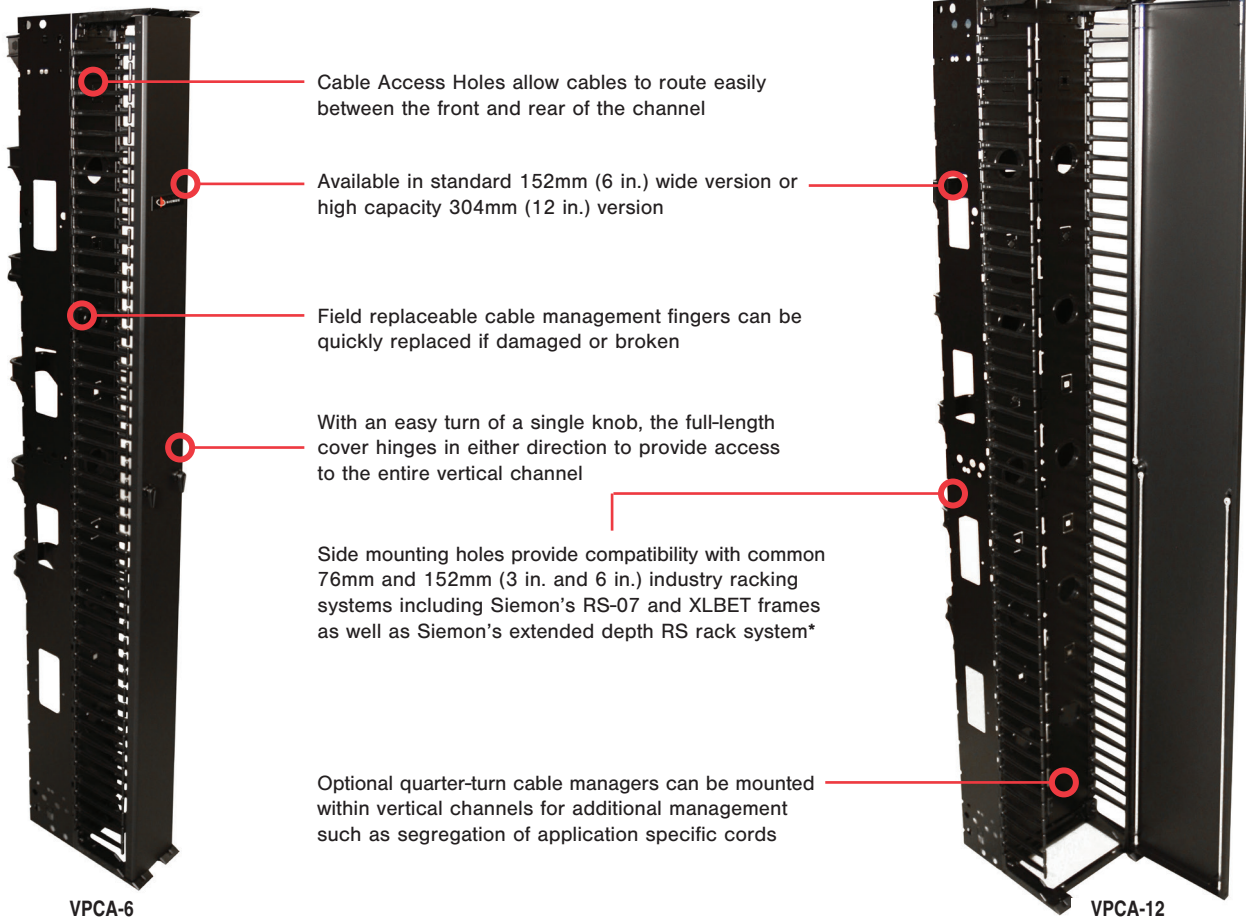


VPC Vertical Patching Channel (VPC)

Siemon's enhanced Vertical Patching Channel (VPC) sets a new standard for cable management systems by improving appearance, accessibility and cable routing on both the front and rear of the rack. Designed as a stand-alone manager to be mounted between adjacent racks the VPC features a full length, hinged door on the front to conceal patch cord routing. The rear manager is open for ready routing of large bundles of horizontal/backbone cabling. With its easy access design, high capacity and professional appearance, the VPC is ideal for both installers and end users alike.



Cable Access Holes allow cables to route easily between the front and rear of the channel

Available in standard 152mm (6 in.) wide version or high capacity 304mm (12 in.) version

Field replaceable cable management fingers can be quickly replaced if damaged or broken

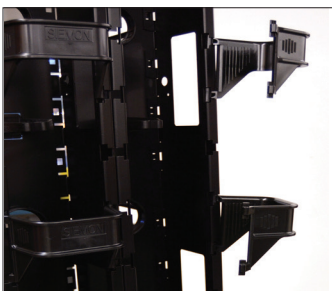
With an easy turn of a single knob, the full-length cover hinges in either direction to provide access to the entire vertical channel

Side mounting holes provide compatibility with common 76mm and 152mm (3 in. and 6 in.) industry racking systems including Siemon's RS-07 and XLBET frames as well as Siemon's extended depth RS rack system*

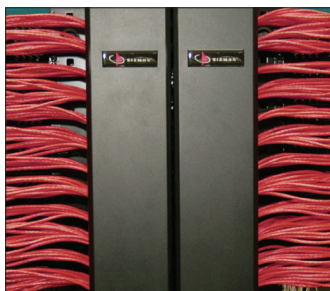
Optional quarter-turn cable managers can be mounted within vertical channels for additional management such as segregation of application specific cords

VPCA-6

VPCA-12



Rear channel retainers can be hinged in either direction and are removable enabling relocation to any position along the rear vertical channel



The VPC is fully side stackable for use in ultra high density environments. The doors can be individually opened 60° or adjacent doors can be removed for full access



All of the cable routing points on the vertical channels are rounded to allow patch cords to seamlessly enter and exit the managers without risk of cable deformation

*When used with extended depth rack, rear channel is used for mounting purposes only.

Ordering Information

6-inch Enhanced Vertical Patching Channel

Part Number	Description
VPCA-6	2.1m x 152mm (7 ft. x 6 in.) vertical patching channel. Includes front cover, 6 rear channel retainers and mounting hardware height: 2.1m (7.0 ft.) width: 152.4mm (6.0 in.) depth: 304.8mm (12.0 in.)



Comprehensive cable management can be created using Siemon's RS-07 and HCM Series horizontal cable managers

12-inch Enhanced Vertical Patching Channel

Part Number	Description
VPCA-12	2.1m x 305mm (7 ft. x 12 in.) vertical patching channel. Includes front cover, 12 rear channel retainers and mounting hardware height: 2.1m (7.0 ft.) width: 304.8mm (12.0 in.) depth: 304.8mm (12.0 in.)



VPCA-12 shown with two RS-07 racks and angled patch panels



CABLE MANAGER CAPACITY TABLE

Part Number	Cable Diameter in. (mm)											
	0.13 (3.30)	0.15 (3.81)	0.17 (4.32)	0.19 (4.83)	0.21 (5.33)	0.23 (5.84)	0.25 (6.35)	0.27 (6.86)	0.29 (7.37)	0.31 (7.87)	0.33 (8.38)	0.35 (8.89)
VPCA-6 (Front)	683	513	399	319	261	218	184	158	137	120	106	94
VPCA-6 (Rear)	1059	795	619	495	405	338	286	245	212	186	164	146
VPCA-12 (Front)	1464	1100	856	685	561	467	396	339	294	257	227	202
VPCA-12 (Rear)	2118	1591	1238	991	811	676	572	491	425	372	328	293

Cable capacities reflect a calculated fill rate of 40% which is intended to reflect 100% fill during actual use due to side cable entry.

Ordering Information

Vertical Manager - Accessories

Part Number **Description**
 VCM-FGR-6..... 152mm (6 in.) Vertical Cable Manager
 Replacement Fingers, 9U, Set of 2



Part Number **Description**
 VCM-DR(XX)..... Replacement Door

Use (XX) to specify width:
 6 = 152mm (6 in.)
 12 = 304mm (12 in.)



RS-CH..... Quarter-turn Cable Managers



RS-VCM..... Quarter-turn Hook & Loop Cable
 Managers, Includes roll of (10)
 457mm (18 in.) black hook &
 loop cable managers and (10)
 quarter-turn mounting clips



VP-SPL..... Quarter-turn Fiber Management
 Spool, Bag of 5



RS-CNL-MGR Channel retainers for use with
 VPCA-6, VPCA-12, RS-CNL and
 RS-CNL3



For related product information request Spec Sheet(s):

RS Rack System (PROD-SS-SRS)
 19 inch Cable Managers (PROD-SS-CBM)

Because we continuously improve our products, Siemon reserves the right to change specifications and availability without prior notice.



SCAN TO DOWNLOAD
 SPEC SHEET

North America
 P: (1) 860 945 4200

Mexico
 P: (521) 556 387 7708/09/10

Latin America
 P: (571) 657 1950/51/52

Europe
 P: (44) 0 1932 571771

Asia Pacific
 P: (61) 2 8977 7500

Siemon OEM Technologies
 P: (1) 860 945 4213
www.siemon.com/OEM

China
 P: (86) 215385 0303

India, Middle East & Africa
 P: (971) 4 3689743