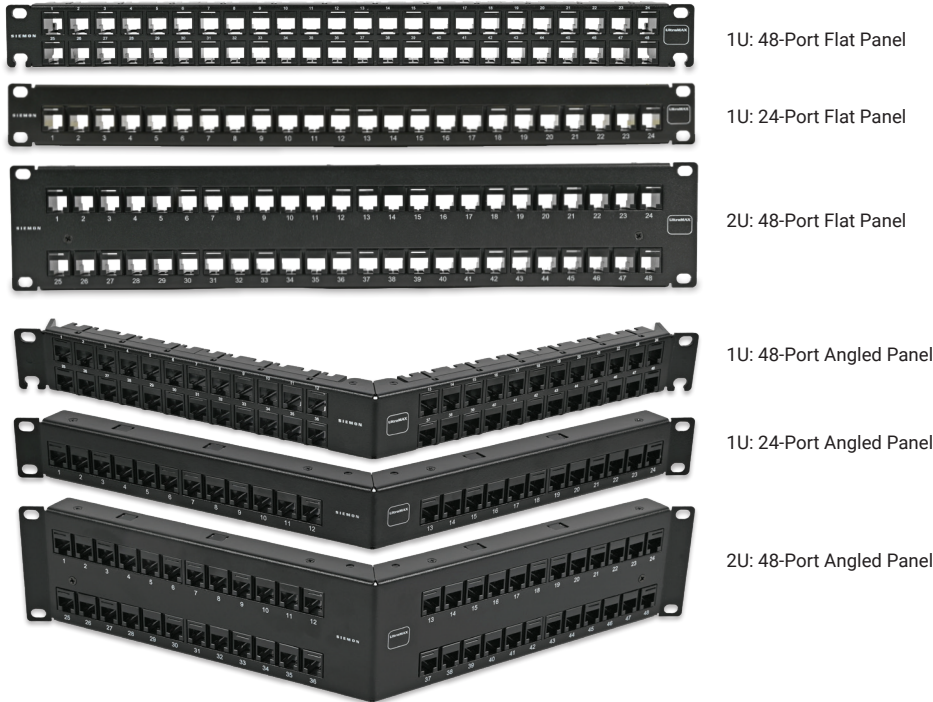


UltraMAX™ Copper Connectivity System

5e, 6, 6A UTP Patch Panels | Regional Availability – Global



The Siemon UltraMAX copper connectivity system utilizes a single platform of innovative patch panels for your category 5e, 6 and 6A UTP requirements. The UltraMAX panels have been designed with our users in mind, maximizing functionality, aesthetics and industry-leading performance into a format that will allow you to configure your ideal system.



Optimal Design

The UltraMAX patch panels have been designed with the installer in mind. Available in 24- and 48-port, angled and flat configurations, they allow users to easily optimize network layouts to best support their requirements.

Durable Construction

Each UltraMAX patch panel is constructed from high strength steel with a scratch-resistant finish, providing a robust foundation for your critical network connections.



- Enhanced Performance**
UltraMAX's diagonal, linear lacing block enhances performance with distinct pair-to-pair separation and simple outlet insertion/removal.



- Distinct Labeling**
Easily identify and manage your port designations, whether using customized labels or color-coded icons, using UltraMAX's magnified label holder, which effortlessly snaps into place for a clean appearance.



- Flexible Cable Management**
UltraMAX patch panels are available with removable rear cable managers, allowing users to easily control their cabling and maintain optimum performance.



- High-Density**
This option provides 48 ports in just 1U to decrease significant rack space utilization while still meeting strict Category 6A Alien Crosstalk Parameters.



For information on our eco-friendly packaging, see the QR Code on page 2.

Get Started

UltraMAX patch panels are available in various options, each designed to provide you with everything you need for your installation:

Loaded:

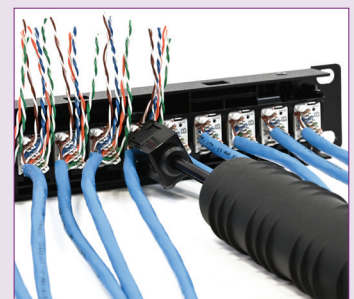
Patch panels arrive pre-loaded with outlets, ready to be terminated directly on the panel.

Kitted:

Patch panels come with the relevant outlets in the box, ready to be terminated wherever required.

Empty:

Patch panels are delivered empty and without outlets. Ideal when used with our pre-terminated copper trunks for ultra-fast deployments.



Superior Termination

UltraMAX's unique design allows users to terminate all four pairs in one action using the systems 4-pair impact tool. This allows users to terminate their outlets 20% faster than traditional termination methods.

MECHANICAL – PANEL

OPERATING TEMPERATURE	-20 to 60°C (-4 to 140°F)
FLAMMABILITY RATING	UL 94 V-0
ECO-FRIENDLY FEATURES	RoHS, Lead-free, Halogen-free, PVC-free, Eco-friendly packaging
PLASTIC MATERIALS	Flame retardant thermoplastic
DIMENSIONS (L X W X H)	<p>24-Port Flat Panel w/Rear Manager, 1U: 127mm (5") x 48mm (19") x 44mm (1.75")</p> <p>*48-Port Flat Panel w/Rear Manager, 1U: 127mm (5") x 48mm (19") x 44mm (1.75")</p> <p>48-Port Flat Panel w/Rear Manager, 2U: 127mm (5") x 48mm (19") x 89mm (3.5")</p> <p>24-Port Angled Panel w/Rear Manager, 1U: 256mm (10") x 48mm (19") x 44mm (1.75")</p> <p>*48-Port Angled Panel w/Rear Manager, 1U: 256mm (10") x 48mm (19") x 44mm (1.75")</p> <p>48-Port Angled Panel w/Rear Manager, 2U: 256mm (10") x 48mm (19") x 89mm (3.5")</p>
MOUNTING CAPABILITY	CEA-310-E 482.6mm (19") rack
CONSTRUCTION MATERIAL	16 gauge cold rolled steel *18 gauge cold rolled steel Black powder coat

COMPLIANCE

ISO/IEC 11801-1 Ed.1.0
IEC 60603-7-41
IEC 60512-99-002 (3 rd party verified)
ANSI/TIA-568.2-E
ANSI/TIA 1096-A
ETL Channel Tested
IEEE 802.3af (Type 1 PoE)
IEEE 802.3at (Type 2 PoE)
IEEE 802.3bt (Type 3 and 4 PoE)
Power over HDBaseT™ (PoH)
UL 1863



Data | Power | Reach | Delivered



Ordering Information

UltraMAX Patch Panels

UP (X or XX) - (X) (X) - (XX) (X) - RS

PERFORMANCE CATEGORY	MOUNTING STYLE	RACK MOUNT SPACE	PORT COUNT	OUTLET CONFIGURATION
5 = 5e UTP 6 = 6 UTP 6A = 6A UTP N = Not Applicable*	F = Flat A = Angled	1 = 1U 2 = 2U	24 = 24-Port 48 = 48-Port**	E = Empty K = Kitted*** L = Loaded

*Use "N" for all empty panel options.

**48-port 1U panels are not compatible with UltraMAX 4-pair impact tool.

***Kitted panels include the UltraMAX palm guard insert for outlet terminations.

Note: Siemon UltraMAX UTP panels are designed for use with UltraMAX panel outlets only.

All panels include one removable wire manager, cable ties and mounting hardware.

Empty: Patch Panel, Black, Empty

Kitted: Patch Panel, Black, Outlets kitted

Loaded: Patch Panel, Black, Outlets installed



Label Sheets



Label/Icon Holder



Panel Blank



Angled Panel Cover



1U 24-Port, 2U 48-Port
Rear Cable Manager



1U 48-Port
Rear Cable Manager



Palm Guard
Insert

UltraMAX Patch Panel Accessories

Part Number	Description
Z-PNL-PL24	Perforated label sheets for 24-port panels, which are blank on one side, and numbered 1 to 24 on the other. 7 sheets for up to 112 panels. Z-MAX®/UltraMAX compatible
Z-PNL-PL48	Perforated label sheets for 48-port panels, which are blank on one side, and numbered 1 to 48 on the other. 14 sheets for up to 112 panels. Z-MAX/ UltraMAX compatible
Z-PNL-PS	Patch panel label holder, Bag of 25 (6-port wide), Z-MAX/ UltraMAX compatible (use with label sheets above or color icons below)
Z-ICON-(XX)B	Color Icons, Z-MAX/ UltraMAX for use with Z-PNL-PS above, box of 100 XX = Color: 01 = Black, 02 = White, 03 = Red, 04 = Gray, 05 = Yellow, 06 = Blue, 07 = Green, 08 = Violet, 09 = Orange, 20 = Ivory, 25 = Bright White, 80 = Light Ivory, 82 = Alpine White
Z-BL-01	Panel blank, Bag of 10, Black rubber, Fits in empty Z-MAX/ UltraMAX panel opening as well as any RJ-45 port for dust protection
PNLA-CVR-01	Angled panel cover, Z-MAX/ UltraMAX, Black
UP-RWM-A	UltraMAX 1U 24-port and 2U 48-port, replacement rear cable manager
UP-RWM-B	UltraMAX 1U 48-port, replacement rear cable manager

UltraMAX Patch Panel Compatible Outlets | For use with empty UltraMAX patch panels only.

U (X or XX) - P00N (X)

PERFORMANCE CATEGORY	PACKAGE TYPE
5 = 5e UTP 6 = 6 UTP 6A = 6A UTP	S = Standard Pack B = Bulk Pack*

*Eco-friendly bulk packs sold with MoQ of 100 and order increment of 100 outlets.



Siemon provides a variety of termination tools for UltraMAX patch panels. View our full offering [here](#).

For information on the complete line of UltraMAX outlets, click [here](#).



Because we continuously improve our products, Siemon reserves the right to change specifications and availability without prior notice.

North America
P: (1) 860 945 4200

Mexico
P: (521) 556 387 7708/09/10

Latin America
P: (571) 657 1950/51/52

Europe
P: (44) 0 1932 571771

Asia Pacific
P: (61) 2 8977 7500

Siemon OEM Technologies
P: (1) 860 945 4213
www.siemon.com/OEM

China
P: (86) 215385 0303

India, Middle East & Africa
P: (971) 4 3689743

SCAN TO DOWNLOAD
SPEC SHEET

www.siemon.com

