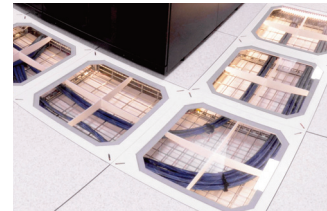


# TERA<sup>®</sup> - S/FTP Trunking Cable Assemblies

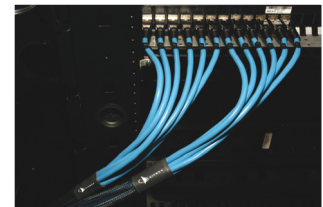
Siemon's TERA copper trunking cable assemblies provide an efficient and cost effective alternative to individual field-terminated components. Combining factory terminated and tested TERA outlets and fully shielded Siemon Category 7<sub>A</sub> cable, Siemon TERA trunking cable assemblies offer industry leading performance to 10Gb/s. Standard configurations also help maintain consistent cable layout, facilitate efficient moves, adds and changes and significantly reduce scrap versus typical field installation. Modular design, in conjunction with reduced scrap, makes trunks the most "Green" method for copper cabling installations.



## Data Centers

Ideal for data center, raised floor and ladder rack environments enabling up to 75% faster deployment time. Well organised cable bundles improve cable management and air flow.

**Identification** — Each cable assembly is coded with a unique identification number for administrative purposes



## Simple, Snap-In Installation

Straight Cut aligns TERA outlets for optimal snap in installation into TERA- MAX patch panels and allows left, right or center exit.

**Fully Shielded Cable** — Utilizes high quality Category 7<sub>A</sub> S/FTP Siemon cable

**Breakout Kit** — Unique breakout kit creates optimal cable orientation and limits cable crossing

**Factory Terminated and Tested** — Utilizes TERA outlets, factory terminated and tested for performance to 10Gb/s



## Protective Packaging

Each assembly is packaged individually to protect factory terminations.

# TERA S/FTP Trunking Cable Assemblies

## 6 Leg Double-Ended Trunking Cable Assemblies

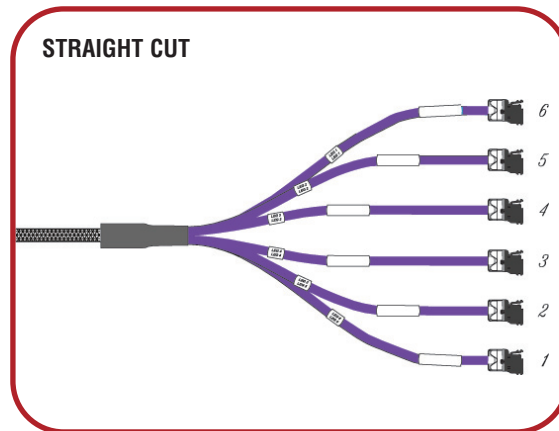
Part #	Description
TJLD8E-F1F1(XXX)M . . . . .	LSOH rated (IEC 60332-1), violet jacket, 1000MHz

Use (XXX) to specify length: 2.7 - 90m in (8.9 - 295 ft.) increments of 1 meter (3.3 ft.)

Other lengths and configurations available upon request.

Trunk cable assembly constructed with EU CPR rated cable Dca

Note: These products are made to order. Call for lead time and part number availability in your region.



Because we continuously improve our products, Siemon reserves the right to change specifications and availability without prior notice.

**Worldwide Headquarters  
North America**  
Watertown, CT USA  
Phone (1) 860 945 4200

**Regional Headquarters  
Europe Africa**  
Chertsey, Surrey, England  
Phone (44) 0 1932 571771

**Regional Headquarters  
China**  
Shanghai, P.R. China  
Phone (86) 215385 0303

**Regional Headquarters  
Latin America**  
Bogota, Colombia  
Phone (571) 657 1950/51/52

**Regional Headquarters  
India Middle East**  
Dubai, United Arab Emirates  
Phone (971) 4 3689743

**Regional Headquarters  
Asia Pacific**  
Sydney, Australia  
Phone (86) 21 5385 0303

**Siemon Interconnect Solutions  
Watertown, CT USA**  
Phone (1) 860 945 4213 US  
[www.siemon.com/SIS](http://www.siemon.com/SIS)