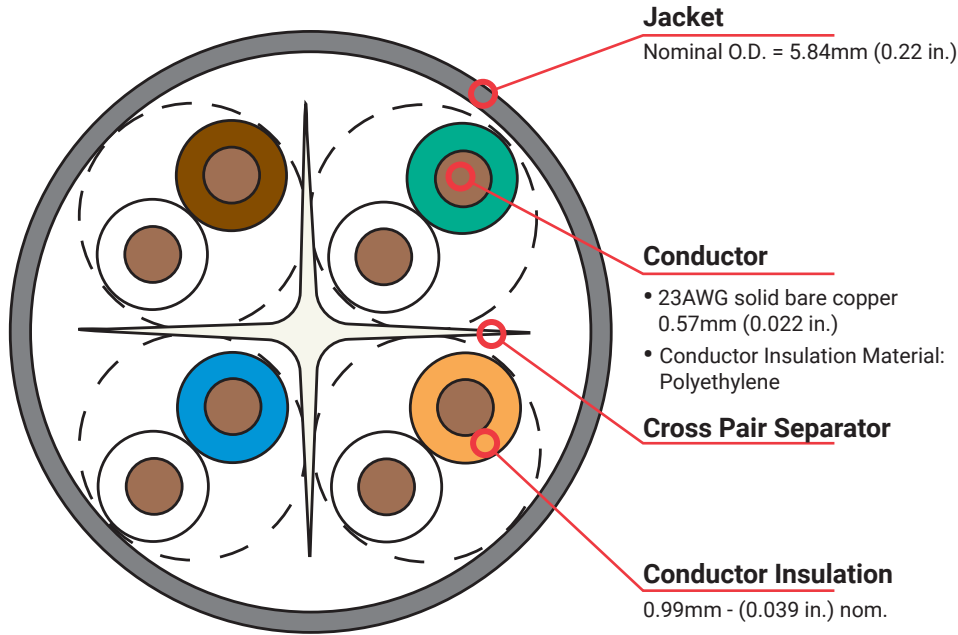


System 6[®] UTP 4-Pair Cable E3

Regional Availability - International

System 6 cable provides significant headroom above all ISO/IEC and ANSI/TIA Category 6 / Class E transmission performance specifications. Combine our high performance category 6 connectivity with System 6 cable and the result is a system with superior electrical performance for optimum applications support.



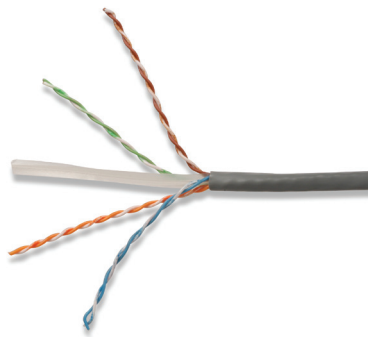
Standards Compliance

- ISO/IEC 11801-1 Ed 1.0 (Class E)
- IEC 61156-5:2009 (Category 6)
- ANSI/TIA-568.2-E (Category 6)
- UL CMR and CSA FT4
- UL CM, IEC 60332-1, EN 50399 Class Eca
- LSOH: IEC 60332-1, IEC 60332-3-22, IEC 60754, IEC 61034, and EN 5039 Class Dcas2d2a1
- IEEE 802.3af (Type 1 PoE)
- IEEE 802.3at (Type 2 PoE)
- IEEE 802.3bt (Type 3 PoE)
- IEEE 802.3bt (Type 4 PoE)
- Power over HDBaseT (PoH)

Cable Construction

- UTP, 4-Pair
- CM, CMR and LSOH jacket types available
- Center isolation member maintains pair geometry for optimal NEXT performance

Part Number	Description
9C6(X)4-E3-RXA	305m (1000 ft.) Reelex
9C6(X)4-E3-5CR	500m (1640 ft.) reel
9C6(X)4-E3-1KR	1000m (3280 ft.) reel



Data | Power | Reach | Delivered

Use (X) to specify jacket type:

L = LSOH (IEC 60332-1, IEC 60332-3-22), Violet Jacket, Class Eca, Dca

M = PVC (CM, IEC 60332-1), Gray Jacket, Class Eca

R = PVC (CMR, CSA FT4), Blue Jacket

Standard colors shown above.

For additional colors, use the following color codes in the (XX) position, 9C6(X)4-E3-(XX)-(XXX).

01=Black, 02=White, 03=Red, 04=Gray, 05=Yellow, 06=Blue, 07=Green, 08=Violet.

Example: 9C6L4-E3-02-RXA, Cat 6 E3, LSOH, White.

Minimum order quantity and extended lead time may apply to non-standard colors.

Contact Siemon Customer Service for more information.

Product Information

Electrical Specifications

DC Resistance	<7.32Ω/100m
DC Resistance Unbalance	5%
Mutual Capacitance	5.6 nF/100m
Capacitance Unbalance	<160 pF/100m
NVP	68%
Delay Skew	≤35ns

Physical Properties

Pulling Tension (max)	110N (25 lbf)	CM/CMR	110N (25 lbf)
Bend Radius (min)	25mm (0.98 in.)		25mm (0.98 in.)
Installation	0 to 50°C (+32 to 122°F)		0 to 50°C (+32 to 122°F)
Storage Temperature	-20 to 60°C (-4 to 140°F)		-20 to 60°C (-4 to 140°F)
Operating Temperature	-20 to 75°C (-4 to 167°F)		-20 to 75°C (-4 to 167°F)

Transmission Performance

Guaranteed Worst Case

Siemon Typical

Frequency (MHz)	Insertion Loss (dB)		NEXT (dB)		PS NEXT (dB)		ACR-F (dB)		PS ACR-F (dB)		Return Loss (dB)		ACR-N (dB)		PS ACR-N (dB)		Propagation Delay (ns)	
1.0	2.0	1.9	77.3	100.7	75.3	99.6	70.8	92.4	68.8	90.1	21.0	25.8	75.3	98.9	73.3	97.7	550	545
4.0	3.7	3.7	68.3	88.2	66.3	88.0	58.8	79.3	56.8	78.3	24.0	32.0	64.5	84.5	62.5	84.3	532	527
10.0	5.9	5.8	62.3	85.3	60.3	83.7	50.8	71.2	48.8	69.8	26.0	37.9	56.4	79.5	54.4	77.8	525	520
16.0	7.5	7.4	59.2	76.8	57.2	75.8	46.7	69.4	44.7	66.3	26.0	37.1	51.8	69.5	49.8	68.4	523	518
20.0	8.4	8.3	57.8	75.4	55.8	74.7	44.8	66.9	42.8	64.7	26.0	35.5	49.4	67.1	47.4	66.4	522	517
31.25	10.6	10.4	54.9	76.6	52.9	73.4	40.9	62.3	38.9	60.6	24.7	43.4	44.4	66.4	42.4	63.0	520	515
62.5	15.2	15.0	50.4	67.1	48.4	66.4	34.9	50.3	32.9	49.5	22.5	36.3	35.1	52.4	33.1	51.4	519	514
100.0	19.6	19.1	47.3	66.4	45.3	65.5	30.8	48.4	28.8	47.6	21.1	33.1	27.7	47.7	25.7	46.5	518	513
160.0	25.4	24.4	44.2	61.9	42.2	60.1	26.7	43.8	24.7	42.8	19.7	31.4	18.9	38.0	16.9	36.1	517	512
200.0	28.7	27.4	42.8	61.6	40.8	58.7	24.8	47.6	22.8	45.4	19.0	27.9	14.1	34.7	12.1	31.8	517	512
250.0	32.6	30.9	41.3	58.3	39.3	56.1	22.8	46.5	20.8	42.6	18.3	25.6	8.8	27.9	6.8	25.8	516	511
300.0*	-	34.1	-	60.0	-	58.1	-	40.0	-	38.2	-	25.6	-	26.2	-	24.2	-	511
400.0*	-	39.9	-	49.3	-	49.1	-	40.0	-	37.8	-	22.9	-	9.6	-	9.3	-	511
500.0*	-	45.0	-	50.6	-	48.7	-	35.9	-	34.7	-	22.6	-	6.5	-	4.5	-	511
550.0*	-	47.7	-	53.4	-	50.9	-	31.8	-	31.1	-	22.4	-	6.6	-	3.3	-	510
600.0*	-	49.5	-	48.8	-	48.1	-	33.8	-	31.8	-	20.9	-	0.2	-	-0.5	-	510

All performance based on 100 meters (328 ft.).

*Values above 250 MHz are informational only.



SCAN TO DOWNLOAD SPEC SHEET

Because we continuously improve our products, Siemon reserves the right to change specifications and availability without prior notice.

North America
P: (1) 860 945 4200

Mexico
P: (521) 556 387 7708/09/10

Latin America
P: (571) 657 1950/51/52

Europe
P: (44) 0 1932 571771

Asia Pacific
P: (61) 2 8977 7500

Siemon OEM Technologies
P: (1) 860 945 4213
www.siemon.com/OEM

China
P: (86) 215385 0303

India, Middle East & Africa
P: (971) 4 3689743