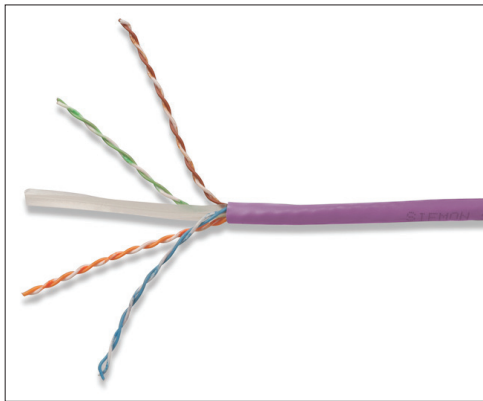
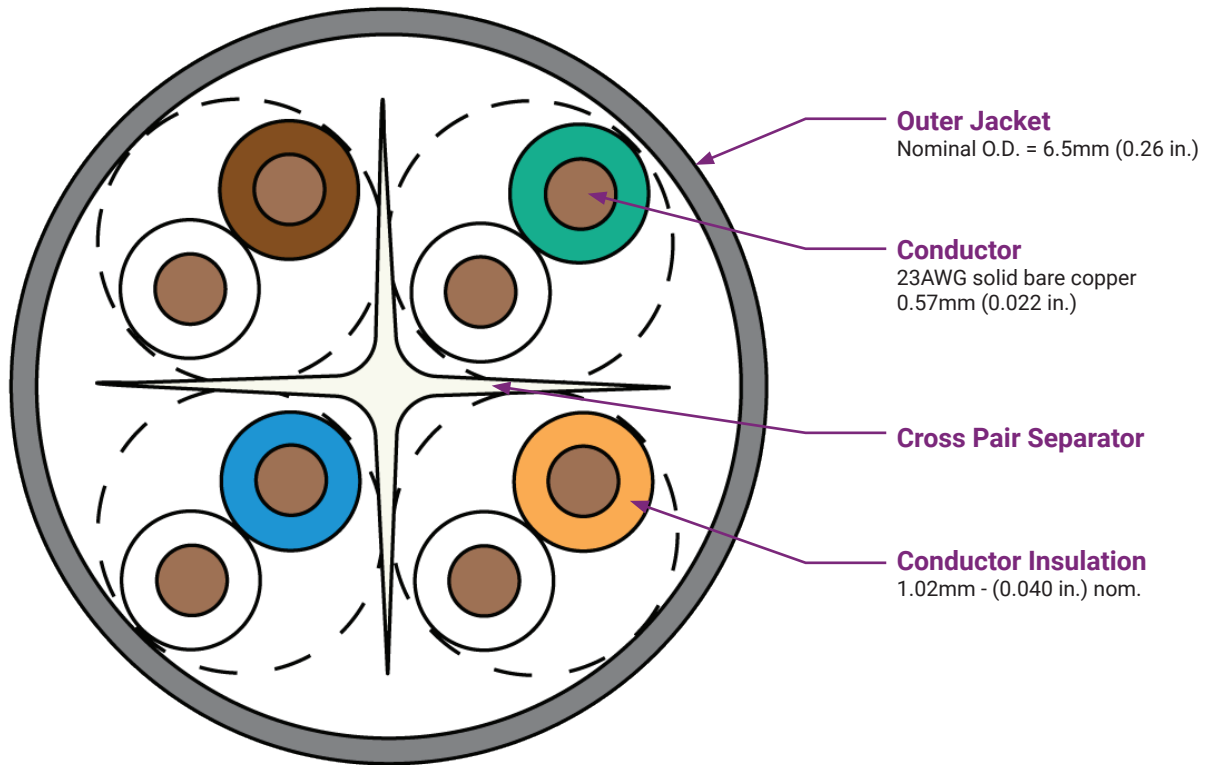


System 6 UTP 4-Pair B2ca Cable

Regional Availability - International

System 6 cable provides significant headroom above all ISO/IEC and ANSI/TIA Category 6 Class E transmission performance specifications. Combine our high performance category 6 connectivity with System 6 cable and the result is a system with superior electrical performance for optimum applications support. In addition this cable has been formulated to meet the stringent CPR Class rating of B2ca, s1a, d1, a1.



Compliance

- ISO/IEC 11801-1 Ed.1.0 (Class E)
- IEC 61156-5 (Category 6)
- ANSI/TIA-568.2-E (Category 6)
- LSOH: IEC 60332-1, IEC 60754, and IEC 61034
- EN 50575 Class B2ca, s1a, d1, a1
- GB 31247 B1 (d1,t0,a1)

Cable Construction

- UTP
- Nominal jacket OD: 6.5mm (0.26 in.)
- 23 AWG 0.57mm (0.022 in.) solid (non-tinned) copper
- Central isolation member
- Reverse sequential numbering

Application Support

- 1000BASE-T
- 100BASE-T
- 10BASE-T
- IEEE 802.3af (Type 1 Poe)
- IEEE 802.3at (Type 2 Poe)
- IEEE 802.3bt (Type 3 Poe)
- IEEE 802.3bt (Type 4 Poe)
- Power over HDBaseT (PoH)

Supports all applications designed for category 6 or lower cabling



Data | Power | Reach | Delivered

Product Information

Electrical Specifications

DC Resistance	7.94 Ω/100m nominal
DC Resistance Unbalance	within pairs ≤2%, between pairs ≤5%
Mutual Capacitance	≤ 5.6 nF/100m
Capacitance Unbalance	<330 pF/100m
NVP	69%
TCL	≥50-10*log(f/) dB
Delay Skew	≤ 45ns

Physical Properties

	LSOH
CPR Rating	B2ca s1a,d1,a1
Pulling Tension (max)	110N (24.7 lbf)
Bend Radius (min)	25mm
Installation Temperature	0 to 50°C (32 to 122°F)
Storage Temperature	-20 to 75°C (-4 to 167°F)
Operating Temperature	-20 to 75°C (-4 to 167°F)

Transmission Performance

Guaranteed Worst Case
 Siemon Typical

Frequency (MHz)	Insertion Loss (dB)		NEXT (dB)		PS NEXT (dB)		ACR-F (dB)		PS ACR-F (dB)		Return Loss (dB)		ACR-N (dB)		PS ACR-N (dB)		Propagation Delay (ns)	
	Guaranteed	Typical	Guaranteed	Typical	Guaranteed	Typical	Guaranteed	Typical	Guaranteed	Typical	Guaranteed	Typical	Guaranteed	Typical	Guaranteed	Typical	Guaranteed	Typical
1.0	2.0	1.7	77.3	92.8	75.3	91.7	70.8	88.7	68.8	86.5	21.0	28.1	75.3	91.1	73.3	90.1	550	504
4.0	3.7	3.4	68.3	81.2	66.3	80.8	58.8	77.8	56.8	75.3	24.0	28.1	64.5	77.8	62.5	77.4	532	500
10.0	5.9	5.5	62.3	73.1	60.3	72.3	50.8	70.2	48.8	67.6	26.0	29.9	56.4	67.6	54.4	66.9	525	496
16.0	7.5	7.0	59.2	73.1	57.2	72.7	46.7	66.2	44.7	63.5	26.0	30.5	51.8	66.2	54.4	65.7	523	495
20.0	8.4	7.8	57.8	72.2	55.8	71.9	44.8	63.6	42.8	61.4	26.0	30.8	49.4	64.5	47.4	64.1	522	495
31.25	10.6	9.8	54.9	70.6	52.9	68.5	40.9	57.8	38.9	56.2	24.7	31.8	44.4	60.9	42.4	58.7	520	494
62.5	15.2	14.1	50.4	57.5	48.4	57.4	34.9	46.2	32.9	46.0	22.5	29.8	35.1	43.6	33.1	43.3	519	493
100.0	19.6	18.0	47.3	59.2	45.3	59.0	30.8	42.6	28.8	41.6	21.1	32.9	27.7	41.5	25.7	41.0	518	492
160.0	25.4	23.2	44.2	57.9	42.2	56.1	26.7	31.0	24.7	30.7	19.7	30.3	18.9	35.1	16.9	32.9	517	492
200.0	28.7	26.1	42.8	56.8	40.8	53.4	24.8	30.9	22.8	30.5	19.0	30.3	14.1	31.1	12.1	27.3	517	492
250.0	32.6	29.4	41.3	54.2	39.3	51.9	22.8	36.6	20.8	33.2	18.3	29.7	8.8	25.2	6.8	22.9	516	492
300.0*	-	32.5	-	53.3	-	52.2	-	35.0	-	32.8	-	29.2	-	21.1	-	20.2	-	492
400.0*	-	38.2	-	49.4	-	47.2	-	34.6	-	31.4	-	25.8	-	11.4	-	9.0	-	491
500.0*	-	43.4	-	51.0	-	50.1	-	31.9	-	29.0	-	18.3	-	8.1	-	6.8	-	491
550.0*	-	45.8	-	41.2	-	40.9	-	32.3	-	30.5	-	23.0	-	-4.0	-	-4.8	-	491

*Values above 250 MHz are informational only

All performance based on 100 meters (328 ft.)

Ordering Information

System 6 UTP 4-Pair B2ca Cable

Part Number	Description
9C6B24-E3-08R1A	LSOH, violet jacket, Class B2 _{ca} , 305m (1000 ft.) Reel

Other cable lengths also available: Replace "R1A" with "5CR" for 500m (1640 ft.) reel, "1KR" for 1000m (3280 ft.) reel. Other colors also available with applicable MOQ's.



Because we continuously improve our products, Siemon reserves the right to change specifications and availability without prior notice.

North America
P: (1) 860 945 4200

Mexico
P: (521) 556 387 7708/09/10

Latin America
P: (571) 657 1950/51/52

Europe
P: (44) 0 1932 571771

Asia Pacific
P: (61) 2 8977 7500

Siemon OEM Technologies
P: (1) 860 945 4213
www.siemon.com/OEM

China
P: (86) 215385 0303

India, Middle East & Africa
P: (971) 4 3689743

SCAN TO DOWNLOAD SPEC SHEET

