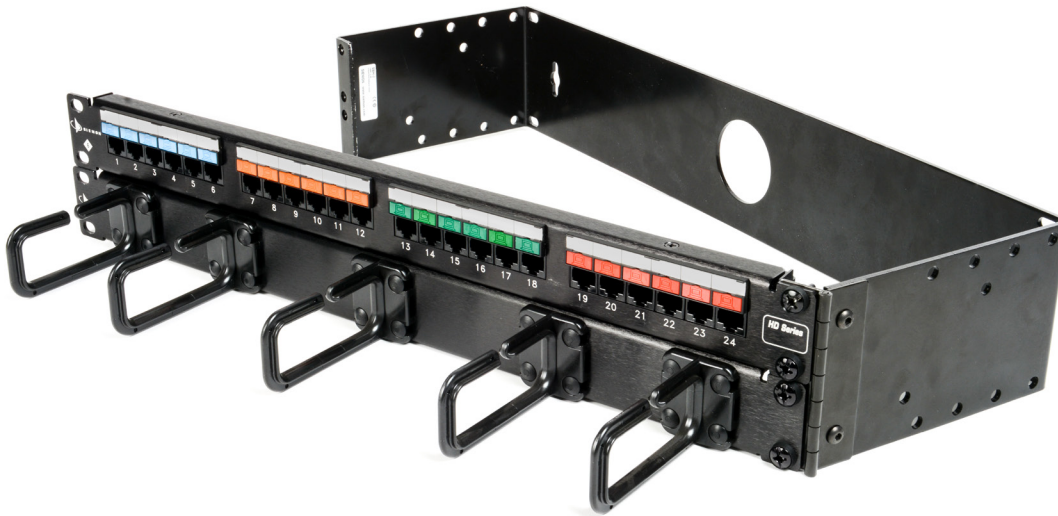


Stand Off Brackets

Regional Availability - Global

Siemon hinged stand-off brackets can be mounted to a wall with the hinge on either side for convenient access to the back of the panel. The sides of the brackets will accept our S144 or S145 cable hangers for external cable management. The brackets accept any combination of Siemon patch panels and rack-mount cable management (single-sided managers and patch panels without integrated rear management are recommended for proper hinge clearance). Mounting hardware included.



Ordering Information

Part Number	Description
SBH-2	2U
SBH-4	4U



SBH-4



SBH-2

Height: See U information
Width: 483mm (19 in.)
Depth: 152mm (6 in.)
Note: 1U = 44.5mm (1.75 in.)

Because we continuously improve our products, Siemon reserves the right to change specifications and availability without prior notice.

North America
P: (1) 860 945 4200

Asia Pacific
P: (61) 2 8977 7500

Latin America
P: (571) 657 1950/51/52

Europe
P: (44) 0 1932 571771

China
P: (86) 215385 0303

India, Middle East & Africa
P: (971) 4 3689743

Siemon Interconnect Solutions
P: (1) 860 945 4213
www.siemon.com/SIS