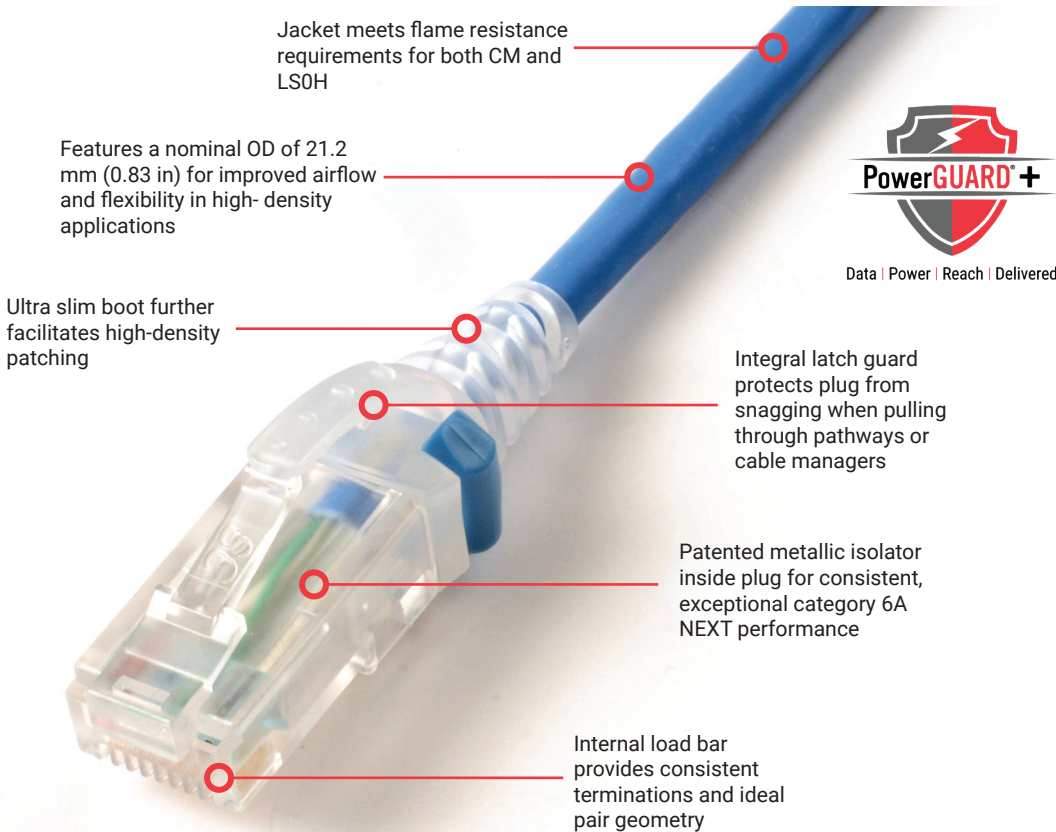


SkinnyPatch® 6A UTP Modular Cords

Regional Availability - International

Siemon's SkinnyPatch 6A UTP Modular Cords deliver category 6A performance with a reduced cable diameter for improved airflow and increased flexibility in high-density patching areas. The cord's smaller 28 AWG stranded copper construction offers a significantly tighter bend radius for easier cable routing and enhanced cable management, providing pathway space savings in racks and cabinets while facilitating moves, adds and changes in tight spaces. These cords also feature Siemon's patented metallic isolator for exceptional NEXT performance and innovative 360-degree crimp for excellent plug-to-cable strain relief. SkinnyPatch 6A UTP cords fully support Category 6A/Class Ea channels backed by Siemon's 25-year system warranty.



Standards Compliance

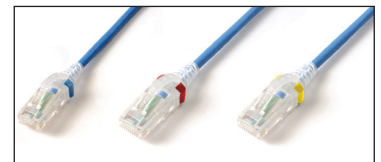
- ANSI/TIA-568.2-E*
- TIA-968-B
- TIA-1096-A
- ISO/IEC 11801-1 Class Eca
- IEC 60603-7
- IEC 61156-6
- CM: cUL US Listed
- LSOH: IEC 60332-1, 60754, 61034

*Patch cord length is limited to 8 meters for a maximum channel length of 98 metres.

Applications Support

- 10GBASE-T
- 1000BASE-T
- 100BASE-T
- 10BASE-T
- HDBASE-T
- IEEE 802.3af (Type 1 PoE)**
- IEEE 802.3at (Type 2 PoE)**
- IEEE 802.3bt (Type 3 PoE)**
- IEEE 802.3bt (Type 4 PoE)**
- Power over HDBaseT (PoH)**

**See table for recommended maximum bundle size.



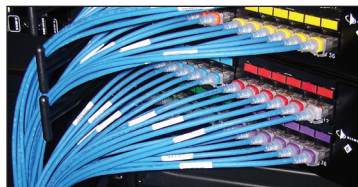
Color Coding

Optional colored clips enable field color coding and can be easily snapped into place without having to disconnect cords



Excellent Bend Relief

Boot and integrated strain relief ensures minimum bend radius for category 6A performance



Diameter and Airflow

Smaller diameter cable significantly reduces bundle and pathway fill for space savings and offers improved airflow, accessibility and cable management in high-density applications



Construction

SkinyPatch offers 40% size reduction over traditional 6A UTP cords for smaller bend radius and easier routing in tight spaces

Performance Specifications

Electrical

Contact Resistance	20 mΩ
Input to Output DC Resistance	200 mΩ
Min. Dielectric Withstand Voltage (contact to contact)	1000 V DC or AC peak
Insulation Resistance	500 mΩ
Compatibility	Category 6A, 6 and 5e
Current Rating @ 25°C (77°F)	1.5 A
Remote Powering	PoE Type 1, Type 2, Type 3, Type 4
Attenuation De-rating Factor	1.9

Mechanical - General

Operating Temperature	-20 to 75°C (-4 to 167°F)
Flammability Rating	UL 94 - V0
Green Features	RoHS, lead-free, halogen-free, PVC free
Contact Materials	Copper alloy with contact plating of 50 microinches gold or equivalent
Plastic Materials	Flame retardant thermoplastic
Marking	P/N, length, performance level

Ordering Information

SkinnyPatch Category 6A double-ended, 4-pair, 28 AWG UTP stranded modular patch-cord, T568A/B, clear boot.

SP6A-(XX)M-(XX)(X)

Length

- 01 = 1m (3.3 ft.)
- 1.5 = 1.5m (5 ft.)
- 02 = 2m (6.6 ft.)
- 03 = 3m (9.8 ft.)
- 04 = 4m (13.1 ft.)
- 05 = 5m (16.5 ft.)

Bulk Package

- Blank = Non Bulk
- B = Bulk (Quantity 100)

Jacket Colour

- | | | |
|------------|-------------|-------------|
| 01 = Black | 04 = Gray | 07 = Green |
| 02 = White | 05 = Yellow | 08 = Violet |
| 03 = Red | 06 = Blue | 09 = Orange |

Colour coded clip, bag of 25

CLIP-(XX)

Clip Colour

- | | | |
|------------|-------------|-------------|
| 01 = Black | 04 = Gray | 07 = Green |
| 02 = White | 05 = Yellow | 08 = Violet |
| 03 = Red | 06 = Blue | 09 = Orange |



Mechanical - Plug

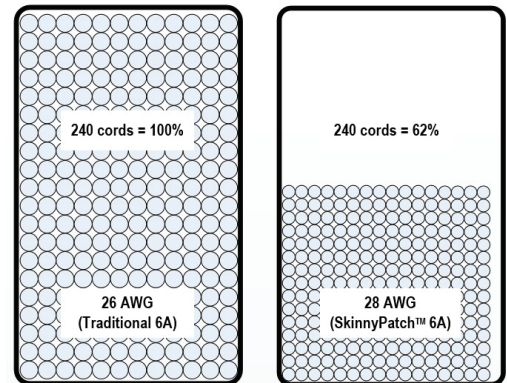
Number of Plug Insertion Cycles	2500
Min. Plug Retention Force	50N (11.24 lbf)
Plug Compatibility	Compatible with RJ45 outlets

Mechanical - Cable

Wire Size (Nominal)	28 AWG 7x36 Stranded bare copper
Cable O.D. (Nominal)	5.3mm (0.21 in.)
Wiring	T568A/B
Jacket Type	CM/LSOH
Bend Radius	21.2 mm (0.83 in)

Maximum Recommended Bundle Size

Application	Current per Pair (mA)	28 AWG Patch Cords
Type 1 PoE (15.4 W)	350	96
Type 2 PoE (30 W)	600	96
Type 3 PoE (60 W)	600	48
Type 4 PoE (90 W)	960	24
PoH (100 W)	1000	24



Fill Comparison: Category 6A UTP Cords in a 6 in. x 3.5 in. (152.4 x 89mm) cable manager



SCAN TO DOWNLOAD SPEC SHEET

Because we continuously improve our products, Siemon reserves the right to change specifications and availability without prior notice.

North America
P: (1) 860 945 4200

Mexico
P: (521) 556 387 7708/09/10

Latin America
P: (571) 657 1950/51/52

Europe
P: (44) 0 1932 571771

Asia Pacific
P: (61) 2 8977 7500

Siemon OEM Technologies
P: (1) 860 945 4213
www.siemon.com/OEM

China
P: (86) 215385 0303

India, Middle East & Africa
P: (971) 4 3689743