

S110® Patch Plug

Regional Availability - Global

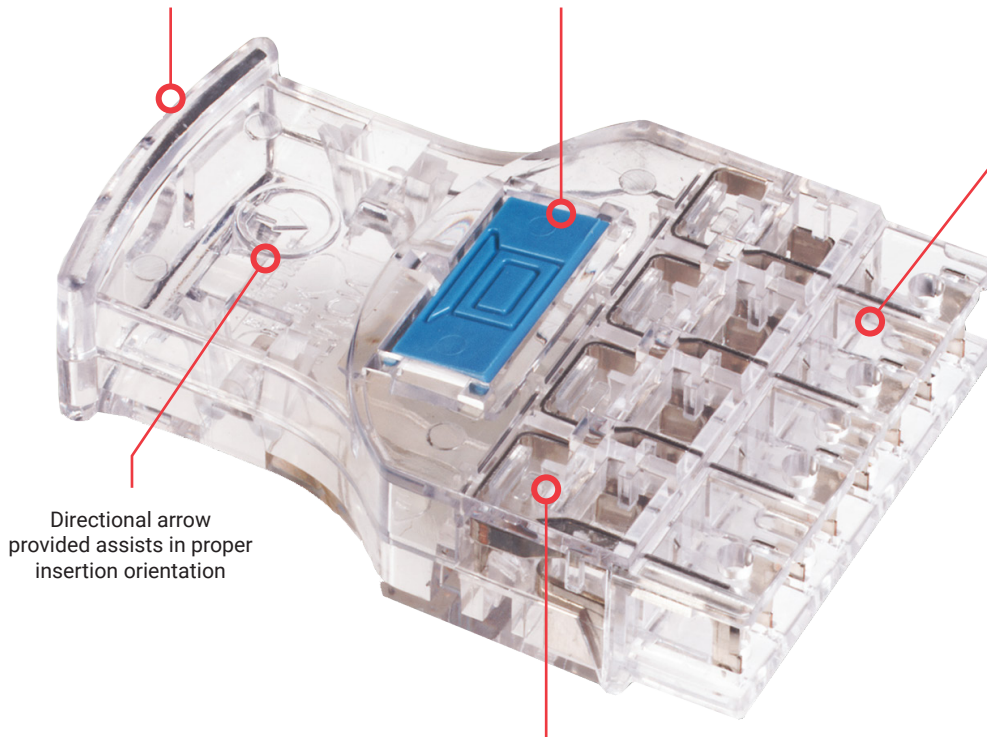
Siemon S110 patch plugs are both category 5e compliant and can be field-terminated to either solid or stranded cable. 4-pair S110 patch plugs employ a patented design to improve electrical isolation between pairs, enhancing cross-talk performance so that the mated plug and connecting block significantly exceed category 5e transmission requirements.

Ergonomic handle aids insertion and removal of patch plug from 110 connect block

Optional colored icon tabs assist in color-coding 4-pair plugs



Each plug housing includes built-in polarization features to ensure proper tip-ring orientation during connection

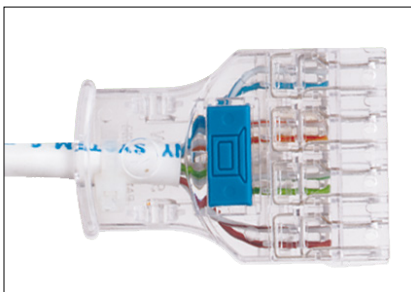


Directional arrow provided assists in proper insertion orientation

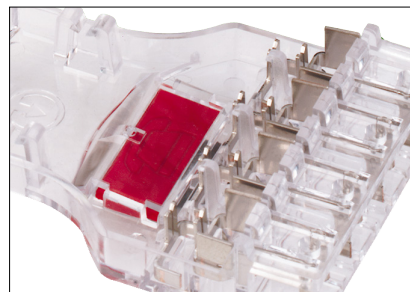
Clear plastic housing allows the conductor colors and positions to be visible for matching termination positions on the opposite end

Technical Tip!

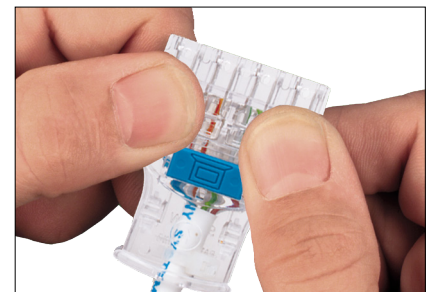
When S110-to-modular plug cable assemblies are configured in the field, The Siemon Company recommends that Siemon MC® 5 modular patch cords be purchased and cut in half. The end of the cord can then be field terminated to the S110P patch plug while the factory terminated and tested modular plug end remains undisturbed.



Terminates 24 to 26 AWG (0.40mm to 0.51mm) solid or 7-strand twisted-pair cable



Staggered contacts in bi-directional planes provide excellent pair-to-pair isolation, delivering component and channel performance to 160 MHz

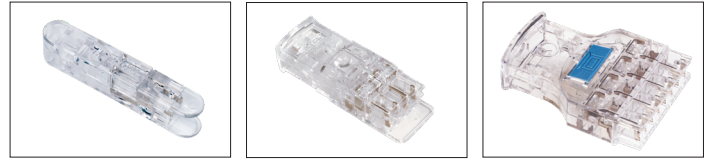


Simply snap the base and cover together to mass terminate all conductors

Ordering Information

S110® Patch Plugs:

Part Number	Description
S110P1*	1-pair, field-terminated, patch plug
S110P2	2-pair, field-terminated, patch plug
S110P4	4-pair, field-terminated, patch plug



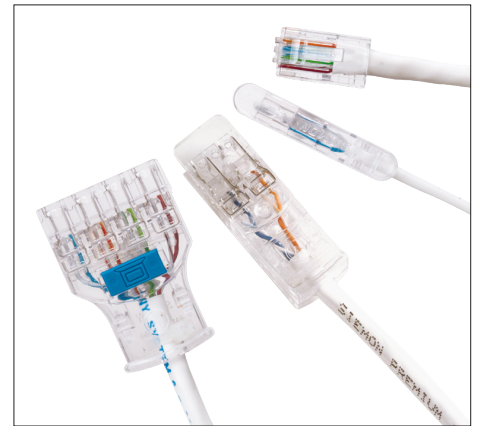
ENHANCED

Add "B" to end of part number for bulk project pack of 100 plugs.

*S110P1 includes protective insert for use with single pair category 5e cross-connect wire. Colored icons are not included. See related products below.

Factory-Terminated S110 Patch Cords:

Part Number	Description
S110P1-P1-(XX)	1-pair, double-ended stranded S110 patch cord, CMG
S110P1-U1-(XX)	1-pair, S110-to-modular 6-position plug, USOC, CMG
S110P1-U4-(XX)	1-pair, S110-to-modular 8-position plug, USOC, CMG
S110P2-P2-(XX)	2-pair, double-ended stranded S110 patch cord, CMG
S110P2-UT-(XX)	2-pair, S110-to-modular 8-position plug, Token Ring, T568A, CMG
S110P2-E2-(XX)	2-pair, S110-to-modular 8-position plug, 10/100BASE-T, T568B, CMG
S110P4-A4-(XX)	4-pair, S110-to-modular plug, T568B, CMG
S110P4-T4-(XX)	4-pair, S110-to-modular plug, T568A, CMG
S110P4-P4-(XX)	4-pair, double-ended stranded S110 patch cord, CMG



Use (XX) to specify length:

03 = 0.91m (3 ft.), 05 = 1.5m (5 ft.), 07 = 2.13m (7 ft.), 10 = 3.05m (10 ft.), 15 = 4.57m (15 ft.), 20 = 6.10m (20 ft.)

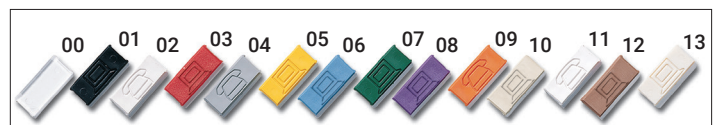
Custom lengths and custom wiring configurations are available upon request. Contact our Customer Service Department for more information.

Related Product:

Part Number	Description
CT-ICON-(XX)	25 colored icon tabs for 4-pair S110 patch plug (phone on one side, computer on reverse)
TAB-(XX)	25 colored blank tabs for 4-pair S110 patch plug

Use (XX) to specify color:

00 = clear (TAB-(XX) only)	04 = gray	08 = violet	12 = brown
01 = black	05 = yellow	09 = orange	13 = light ivory
02 = white	06 = blue	10 = ivory	
03 = red	07 = green	11 = bright white	



Add "B" for bulk pack of 100.

For related product information request Spec Sheet(s): S110 Wiring Blocks (PROD-SS-110)

Because we continuously improve our products, Siemon reserves the right to change specifications and availability without prior notice. S110® and MC® are trademarks of The Siemon Company.

North America
P: (1) 860 945 4200

Asia Pacific
P: (61) 2 8977 7500

Latin America
P: (571) 657 1950/51/52

Europe
P: (44) 0 1932 571771

China
P: (86) 215385 0303

India, Middle East & Africa
P: (971) 4 3689743

Siemon Interconnect Solutions
P: (1) 860 945 4213
www.siemon.com/SIS

Mexico
P: (521) 556 387 7708/09/10