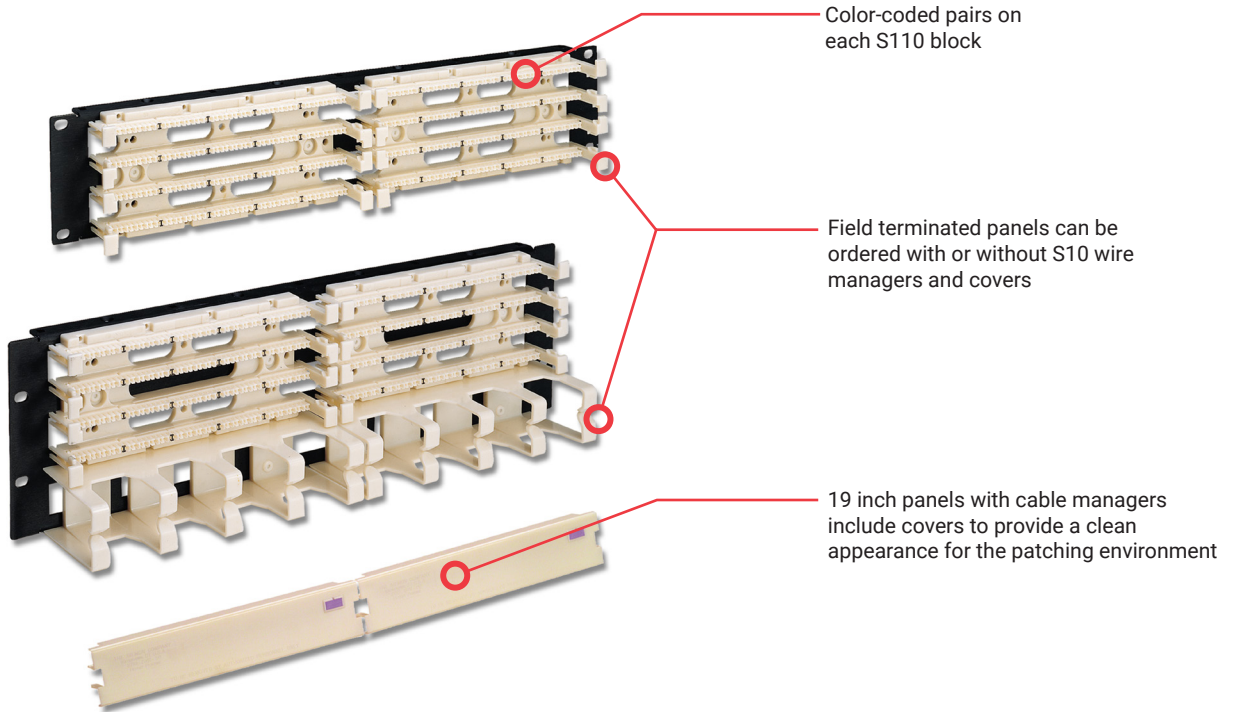


S110® Field-Terminated Panels

Regional Availability - Global

S110 panels allow wiring blocks to be mounted directly to a 19 inch EIA rack. Each panel includes adequate connecting blocks to complete each 25-pair termination strip on the S110 block (e.g. S110DB1-100RFT would include five 4-pair and one 5-pair connecting block per 25-pair termination strip, or a total of twenty 4-pair and four 5-pair connecting blocks). Siemon Category 5e S110C connecting blocks terminate 22-26 awg (0.64mm-0.40mm) solid or 7-strand wires. Panels without cable managers are available in 100-, 200-, and 300-pair configurations. Panels with cable managers are available in 100- and 200-pair versions.



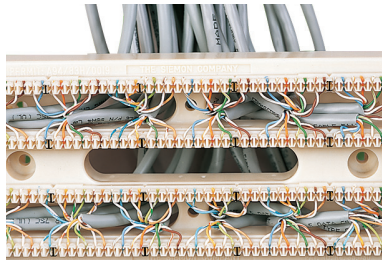
Color-coded pairs on each S110 block

Field terminated panels can be ordered with or without S10 wire managers and covers

19 inch panels with cable managers include covers to provide a clean appearance for the patching environment



Black anodized panels can be mounted directly to 19" EIA racks or cabinets, ideal for installations where wall mounting space is not available



Patented openings between rows allow horizontal cables to be routed from behind the panel and enter the block from the rear, helping to maintain cable geometry up to the point of termination ensuring optimum category 5e performance



Panels are available with S110 cable managers and covers for superior horizontal cable management and a clean, neat appearance

Ordering Information

19 inch S110® Field-Terminated Panels:

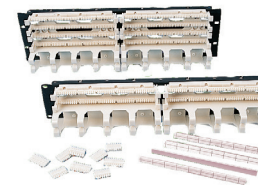
Field Terminated

| Part Number | Description |
|------------------|-------------------------------|
| S110D(X)1-100RFT | 100-pair 19 inch panel, 1 RMS |
| S110D(X)1-200RFT | 200-pair 19 inch panel, 2 RMS |
| S110D(X)1-300RFT | 300-pair 19 inch panel, 3 RMS |



Field Terminated with Cable Management

| Part Number | Description |
|------------------|--------------------------------------------------------------|
| S110D(X)2-100RWM | 100-pair 19 inch panel with cable managers and covers, 2 RMS |
| S110D(X)2-200RWM | 200-pair 19 inch panel with cable managers and covers, 3 RMS |



Use (X) to specify connecting blocks: A = S110C-5, 5-pair connecting blocks, B = S110C-4, 4-pair connecting blocks

19 inch S110 Cable Management:

When mounted on a 19 inch rack-mount panel, the S110 cable managers provide superior cable management in a compact space. Their 1 RMS and 2 RMS sizes allow for excellent cable management for 19 in rack mount installations. Covers are included with the cable managers to provide a clean appearance.

| Part Number | Description |
|----------------|---------------------------------------------------------------|
| S110-RWM-(XX) | 1 RMS panel with cable managers, covers and mounting hardware |
| S110-RWM2-(XX) | 2 RMS panel with cable managers, covers and mounting hardware |

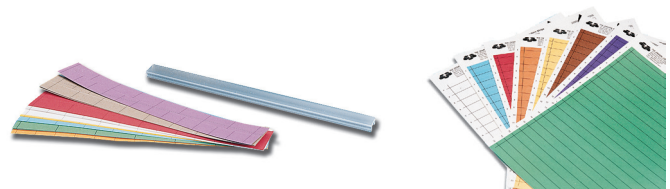


Use (XX) to specify cable manager color: 01 = black, 02 = white
Note: 1 RMS = 44.5mm (1.75 in.)

Accessories

S110 Designation Labels

| Part Number | Description |
|---------------|--------------------------------------------------------|
| S110-HLDR | Clear plastic label holders, bag of 6 |
| S110-LBL-(X) | 2-, 3-, 4-, and 5-pair marked colored labels, bag of 6 |
| S110-SHT-(X)* | S110 Designation Label Sheet (package of 6) |



Use (X) to specify color: 2 = white, 6 = blue

*Contact our web site at www.siemon.com or Technical Support Department for labeling software

S110® is a trademark of The Siemon Company

Because we continuously improve our products, Siemon reserves the right to change specifications and availability without prior notice.

| | | | | | |
|---------------------------------------------------------------------------------------------------------------------------|----------------------------------------------|-------------------------------------------------|----------------------------------------|-------------------------------------|--------------------------------------------------------------|
| North America P: (1) 860 945 4200 | Asia Pacific P: (61) 2 8977 7500 | Latin America P: (571) 657 1950/51/52 | Europe P: (44) 0 1932 571771 | China P: (86) 215385 0303 | India, Middle East & Africa P: (971) 4 3689743 |
| Siemon Interconnect Solutions P: (1) 860 945 4213 www.siemon.com/SIS | Mexico P: (521) 556 387 7708/09/10 | | | | |