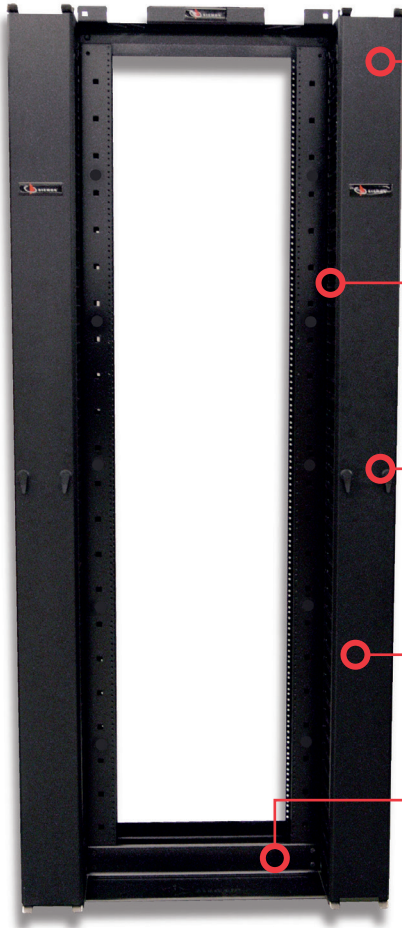


RS Rack

Regional Availability - Global

Siemon's cable management rack system (RS) combines a 2.1m (7 ft.) x 19 inch black aluminum or steel rack with 1/4-turn cable management accessories to provide a complete management solution. Ideal for all size installations, the rack features fully usable 45U capacity.



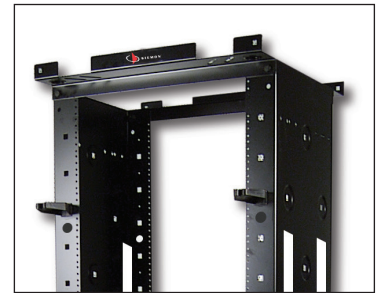
Header bars incorporate unique slotted holes for securing cable trays routed perpendicular to or parallel with RS racks

High capacity 1/4-turn cable managers lock into place quickly without use of screws or mounting tools and can be easily located in many positions on the front, side, back, and within channel to provide customized cable management

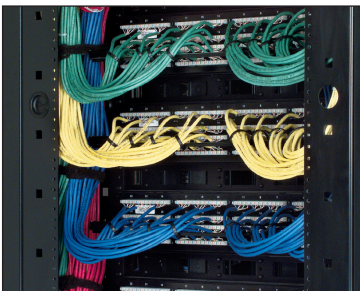
RS-07 shown with two VPCA-6 Vertical Patching Channels (sold separately)

Vertical Patching Channels are available in standard 152mm (6 in.) or high capacity 304mm (12 in.) versions

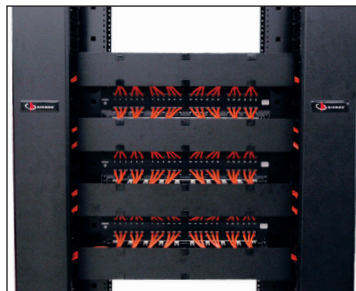
Mounting holes provided for anchoring rack to floor



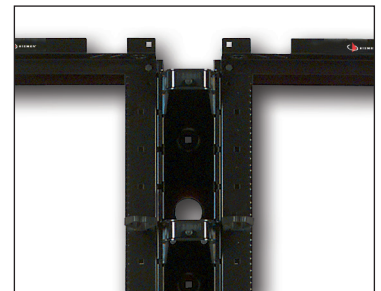
Optional extended depth RS rack for managing extra large volumes of horizontal cable.



76mm (3 in.) x 152mm (6 in.) vertical side rail channels on rack provide large area for routing high volumes of horizontal or backbone cables.



Comprehensive cable management can be created using Siemon's RoutelT Vertical and Horizontal Cable Managers.



Optional vertical cable management channels allow a high volume of patch cords to be routed between two racks or within a single rack.

Product Information

Siemon Rack System

Part Number Description

RS-07	7 ft. x 19 inch (2.1m x 482mm) aluminum cable management rack system. Includes rack assembly hardware, 10 high-capacity cable managers, 10 hook and loop cable managers, and ground lug
--------------	---

Add "-S" for Steel

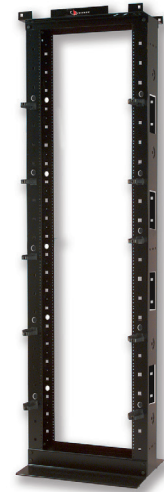
Add "E" for Extended Depth [0.37m (14.5 in.) rails] aluminum rack*

Notes:

1. Aluminum racks are intended for use with connecting hardware and cable managers only. For mounting of active equipment, steel racks are recommended.

2. Single-sided vertical cable managers are recommended for use with extended depth racks as the rear access functionality of double-sided vertical cable managers is compromised.

3. RS-07 series racks are not compatible with Siemon's Value Vertical Cable Managers



Rack Accessories

Part Number Description

RS-CH	High-capacity cable managers for front of rack
RS-VCM	Box of 10 quarter-turn hook and loop cable managers. Includes black 457.2mm (18 in.) managers



RS Series Rack Specifications

Part Number Description

U Space	45U Note: 1U = 44.5mm (1.75 in.)
Height	2.1m (7ft)
Width	609.6mm (24 in.)
Depth	RS-07(-S): 457.2mm (18 in.) RS-07E: 584.2mm (23.0 in.)
Color	Black
Packaging	Ships unassembled in a carton
Standards Compliance	CEA-310-E, UL 1863, RoHS
Weight (With packaging for RS-07-(x))	Aluminum: 20 kg (47 lbs) Steel: 34 kg (75 lbs)
Load Rating	Aluminum: 227 kg (500 lbs) Steel: 454 kg (1000 lbs)

Because we continuously improve our products, Siemon reserves the right to change specifications and availability without prior notice.

North America
P: (1) 860 945 4200

Mexico
P: (521) 556 387 7708/09/10

Latin America
P: (571) 657 1950/51/52

Europe
P: (44) 0 1932 571771

China
P: (86) 215385 0303

India, Middle East & Africa
P: (971) 4 3689743

Asia Pacific
P: (61) 2 8977 7500

Siemon OEM Technologies
P: (1) 860 945 4213
www.siemon.com/OEM

www.siemon.com

SS_Racks_RS Rack_Global_RevM 9/24

