



PowerMax™ Manager Software

Siemon's PowerMax Manager is an easy-to-use application that provides an intuitive graphical interface for monitoring and managing up to 200 Siemon PowerMax power distribution units (PDUs). Ideal for data centers and telecommunications spaces, users can set up multiple equipment room layouts that graphically depict cabinets and PDU locations. Depending on the intelligence level and functionality of the PDU, PowerMax Manager collects status, power usage and environmental data to provide room, cabinet, PDU and port level information, including total power usage and environmental data via any connected PDU temperature and humidity sensors. With multiple levels of granularity and control, PowerMax Manager enables individual PDU ports to be turned on or off and sends alarms based on user-defined thresholds, helping data center managers avoid downtime, maximize asset utilization and improve overall power usage effectiveness (PUE).

Multiple Room Displays

Users can set up multiple server rooms depicting cabinet layouts and PDU locations

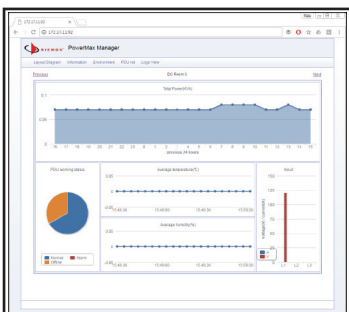
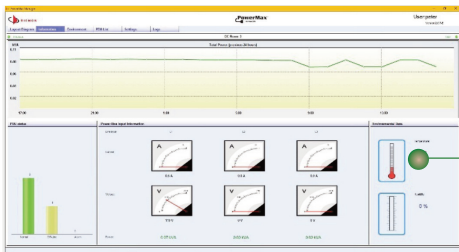
PDU Status

PDU alarm status and environmental information is displayed for each PDU*



Room Overview

Provides PDU statuses, overall power usage, critical environmental data and granular power line current and voltage information*



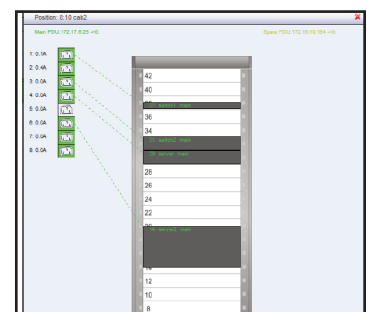
Web Browser Capability

System users can view PowerMax Manager data via a compatible web browser for remote monitoring

| ID | Model | Serial | IP | Power | Temp | Humidity | Alarm |
|----|------------|-----------|--------------|-------|------|----------|-------|
| 1 | PM1000-120 | 123456789 | 192.168.1.1 | 1000W | 25°C | 50% | OK |
| 2 | PM1000-120 | 987654321 | 192.168.1.2 | 1000W | 25°C | 50% | OK |
| 3 | PM1000-120 | 111111111 | 192.168.1.3 | 1000W | 25°C | 50% | OK |
| 4 | PM1000-120 | 222222222 | 192.168.1.4 | 1000W | 25°C | 50% | OK |
| 5 | PM1000-120 | 333333333 | 192.168.1.5 | 1000W | 25°C | 50% | OK |
| 6 | PM1000-120 | 444444444 | 192.168.1.6 | 1000W | 25°C | 50% | OK |
| 7 | PM1000-120 | 555555555 | 192.168.1.7 | 1000W | 25°C | 50% | OK |
| 8 | PM1000-120 | 666666666 | 192.168.1.8 | 1000W | 25°C | 50% | OK |
| 9 | PM1000-120 | 777777777 | 192.168.1.9 | 1000W | 25°C | 50% | OK |
| 10 | PM1000-120 | 888888888 | 192.168.1.10 | 1000W | 25°C | 50% | OK |

Monitor Up to 200 PDUs

PowerMax Manager displays power, environmental data, and port, PDU and alarm status for up to 200 Siemon PDUs*



Manage at the Device Level

Easily add devices to a cabinet information and assign rack unit location and associated PDU ports

* PowerMax Manager capabilities are based on PDU intelligence level, functionality and accessories (i.e. environmental sensors).





Ordering Information:

PM-SWL-A.....PowerMax™ Manager Software



System Requirements:

| Requirement | Component and Version |
|-------------------|--|
| Operating System | Window 7 or Higher |
| Client Web Access | Internet Explorer, Firefox and Google Chrome |

PowerMax Manager Software is designed for use with Siemon's PowerMax line of intelligent PDUs, available with varying degrees of intelligence, including managed, metered, monitored, smart and switched.



** PowerMax Manager capabilities are based on PDU intelligence level, functionality and accessories (i.e. environmental sensors).*

Because we continuously improve our products, Siemon reserves the right to change specifications and availability without prior notice.

**Worldwide Headquarters
North America**
Watertown, CT USA
Phone (1) 860 945 4200

**Regional Headquarters
Europe Africa**
Chertsy, Surrey, England
Phone (44) 0 1932 571771

**Regional Headquarters
China**
Shanghai, P.R. China
Phone (86) 215385 0303

**Regional Headquarters
Latin America**
Bogota, Colombia
Phone (571) 657 1950/51/52

**Regional Headquarters
India Middle East**
Dubai, United Arab Emirates
Phone (971) 4 3689743

**Regional Headquarters
Asia Pacific**
Sydney, Australia
Phone (86) 21 5385 0303

**Siemon Interconnect Solutions
Watertown, CT USA**
Phone (1) 860 945 4213 US
www.siemon.com/SIS

