

Plug and Play Modules and Adapter Plates

Siemon Plug and Play Modules

Siemon LC to MTP® and SC to MTP Plug and Play modules provide a quick and efficient way to deploy up to 24 LC or 12 SC fibres in a single module. These factory terminated and tested ports are protected within the housing for reliable high performance and simply connected via 12-strand MTP ports. Modules are available in Multimode (62.5/125 and laser optimised 50/125 OM3/OM4) and Singlemode cable.

Compact Housing

Reduces mounting depth for greater cable management space within enclosures

Optimised Adapter Spacing

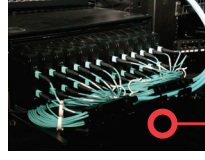
Enables easy finger access to fibre jumper connector latches in high density patching environments

Durable and Lightweight

High-impact molded plastic body with single-finger access

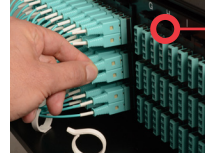
Multimode and Singlemode Modules

Utilize zirconia ceramic sleeves for optimum performance



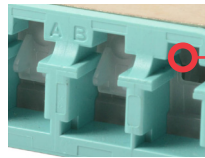
Recessed Base

Allows cable to be fit under the modules for added cable management space when installed in the horizontal orientation (i.e. within FCP drawer)



Compatible with Existing Siemon Enclosures

Fits within RIC, FCP and SWIC Siemon fibre enclosures and VersaPOD® vertical patch panels



Shuttered LC adapters

Optional small plastic shutter door that opens upon insertion without touching the connector endface and springs back into the closed position upon removal to ensure protection of empty ports.



PP2-12-(XX)(X)-01(X) ----- 12 Fibre P&P Module with 1 MTP port, black module

Interface

LC = Standard LC
SC = SC
LS = Shuttered LC

Configuration

L = Low Loss
Blank = Standard Loss

Fibre Type

6 = OM1, 62.5/125 Multimode Beige adapters
5L = OM3, XGLO 300 50/125 Multimode Aqua adapters
5V = OM4, XGLO 550 50/125 Multimode Aqua adapters
EV = OM4, XGLO 550 50/125 Multimode Erika Violet adapters
SM = OS1/OS2, Singlemode Blue adapters



PP2-24-L(X)(X)-01(X) ----- 24 Fibre LC P&P Module with 2 MTP ports, black module

Shutter Door Option

C = Standard LC
S = Shuttered LC

Configuration

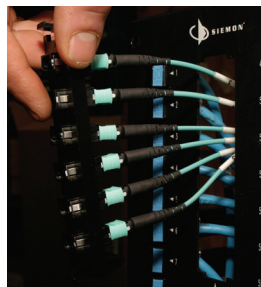
L = Low Loss
Blank = Standard Loss

Fibre Type

6 = OM1, 62.5/125 Multimode Beige adapters
5L = OM3, XGLO 300 50/125 Multimode Aqua adapters
5V = OM4, XGLO 550 50/125 Multimode Aqua adapters
EV = OM4, XGLO 550 50/125 Multimode Erika Violet adapters
SM = OS1/OS2, Singlemode Blue adapters

MTP to MTP Adapter Plates

Siemon MTP Adapter Plates offer a user friendly “pass-through” option for MTP connectors. Fitting within Siemon’s fibre enclosures and VersaPOD vertical patch panels, these plates secure MTP connectors, allowing efficient implementation of MTP to MTP reels and extenders as well as MTP to LC Trunks for direct equipment and patching connections.



High Density

Supports up to 96 fibres per adapter plate - providing up to 1152 fibres in 4U

Flexible Configurations

1, 2, 4, 6 and 8 port versions available, supporting both Singlemode and Multimode

40 Gb/s and 100 Gb/s Ready

Enables simple upgrade path to future 40 Gb/s and 100 Gb/s applications over Multimode 50/125 laser optimised fibre

Popular RIC Adapter Footprint

Fits within RIC, FCP and SWIC Siemon fibre enclosures and VersaPOD vertical patch panels

Ordering Information



RIC-F-MP(XX)-01-(X) ----- MTP adapter plate

Fibre Count

12 = 12 (1 MTP adapter)
 24 = 24 (2 MTP adapters)
 48 = 48 (4 MTP adapters)
 72 = 72 (6 MTP adapters)
 96 = 96 (8 MTP adapters)

Key Orientation

Blank = Opposed (key up to key down) Black adapters
Q = Opposed (key up to key down) Aqua adapters
E = Opposed (key up to key down) Erika Violet adapters
B = Aligned (key up to key up) Grey adapters

PERFORMANCE

Fiber Type		MAX Insertion (dB)		MAX Return Loss (dB)		Performance Class
		MTP	LC, SC	MTP	LC, SC	
6MM	62.5/125	0.50	0.50	20	25	LightSystem™
5L-MM	50/125 10G (OM3)	0.40	0.25	20	30	XGLO™ 300
5V-MM	50/125 10G (OM4)	0.40	0.25	20	30	XGLO™ 550
SM-LWP	SM (OS2)	0.60	0.40	60	55	XGLO™
5V-MM	50/125 10G (OM3)	0.20	0.15	20	30	XGLO 300 Low Loss
5V-MM	50/125 10G (OM4)	0.20	0.15	20	30	XGLO 550 Low Loss

Because we continuously improve our products, Siemon reserves the right to change specifications and availability without prior notice.

North America
 P: (1) 860 945 4200

Asia Pacific
 P: (61) 2 8977 7500

Latin America
 P: (571) 657 1950/51/52

Europe
 P: (44) 0 1932 571771

China
 P: (86) 215385 0303

India Middle East
 P: (971) 4 3689743

Siemon Interconnect Solutions
 P: (1) 860 945 4213
www.siemon.com/SIS