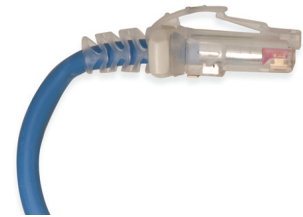
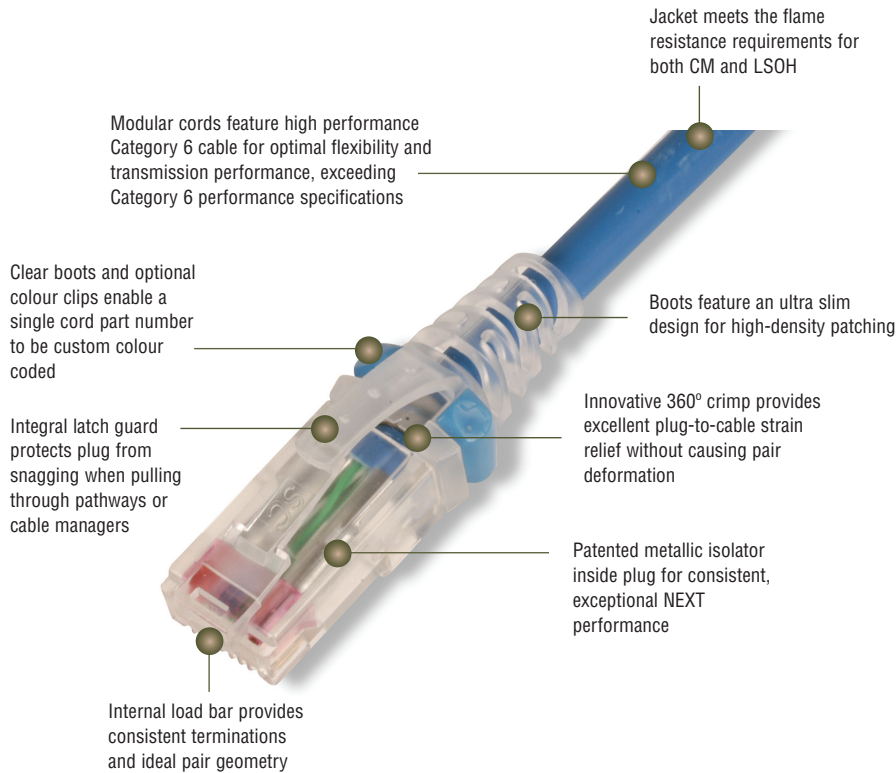


MC[®] 6 UTP Modular Cords - International

Siemon's Category 6 series of modular cords are key components to ensure optimum channel performance of our Category 6 UTP systems. A variety of product enhancements contribute to the cord's superior performance — including 250 MHz rated stranded cordage, a patented crosspair isolator and an innovative 360° crimp, which provides excellent plug-to-cable strain relief without causing pair deformation.



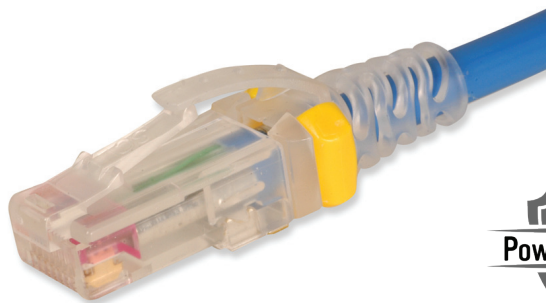
Excellent Bend Relief

Boot and integrated strain relief ensures proper bend relief, critical for Category 6 performance



Colour Coding

Optional coloured clips enable field colour coding and can easily be snapped into place without having to disconnect cords



Data | Power | Reach | Delivered

STANDARDS COMPLIANCE

- ANSI/TIA-568.2-E
- ISO/IEC 11801-1 Ed 1.0
- IEEE 802.3af (Type 1 PoE)
- IEEE 802.3at (Type 2 PoE)
- IEEE 802.3bt (Type 3 PoE)
- IEEE 802.3bt (Type 4 PoE)
- Power over HDBaseT (PoH)
- IEC 60603-7
- cUL US Listed
- IEC 60332-1, 60754, 61054, 61034
- TIA-968-A (formerly FCC Part 68 Subpart F)

PRODUCT INFORMATION

PERFORMANCE SPECIFICATIONS*

ELECTRICAL	
Contact Resistance	20 mΩ
Input to Output DC Resistance	200 mΩ
Min. Dielectric Withstand Voltage (contact to contact)	1000 V DC or AC peak
Insulation Resistance	500 mΩ
Compatibility	Backwards to cat 5e
Current Rating @ 25° C	1.5 A
Power over Ethernet	Suitable for PoE Type 1,2,3,4 and PoH
MECHANICAL – GENERAL	
Operating Temperature	-10 to 75°C, (14 to 167°F)
Flammability Rating	UL 94 - V0
Green Features	RoHS, lead-free, halogen-free, PVC free
Contact Materials	Copper alloy with contact plating of 50 micro inches gold or equivalent
Plastic Materials	Flame retardant thermoplastic
Marking	P/N, length, performance level, QC
MECHANICAL – PLUG	
Number of Plug Insertion Cycles	750
Min. Plug Retention Force	50N
Plug Compatibility	Compatible with RJ45 outlets

MECHANICAL – CABLE (STRANDED)	
Wire Size Range (nominal)	26 AWG 7x34 Stranded tinned copper
Cable Construction	UTP
Cable O.D. (nominal)	5.3mm (0.20 in.)
Wiring	T568A/B
Jacket Type	CM/LSOH
Bend Radius	25mm (1.0 in.)

MC 6 UTP Modular Cords

Category 6 MC, double-ended, 4-pair UTP stranded modular patch cord, T568A/B, clear boot.

MC6-(XX)M-(XX)

CLIP-(XX) Colour coding clip, bag of 25

Cord Length

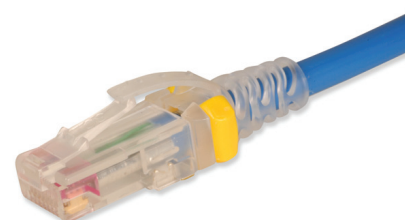
01 = 1m (3.3 ft.)
 1.5 = 1.5m (5.0 ft.)
 02 = 2m (6.6 ft.)
 03 = 3m (9.8 ft.)
 05 = 5m (16.4 ft.)
 7.5 = 7.5m (24.6 ft.)

Cord Colour

01 = Black
 02 = White
 03 = Red
 04 = Grey
 05 = Yellow
 06 = Blue
 07 = Green
 08 = Violet
 09 = Orange

Clip Colour

01 = Black 04 = Grey
 02 = White 05 = Yellow
 03 = Red 06 = Blue



Ⓢ Add "B" for bulk pack of 100 modular cords.



SCAN TO DOWNLOAD
SPEC SHEET

Because we continuously improve our products, Siemon reserves the right to change specifications and availability without prior notice.

North America
P: (1) 860 945 4200

Mexico
P: (521) 556 387 7708/09/10

Latin America
P: (571) 657 1950/51/52

Europe
P: (44) 0 1932 571771

Asia Pacific
P: (61) 2 8977 7500

Siemon OEM Technologies
P: (1) 860 945 4213
www.siemon.com/OEM

China
P: (86) 215385 0303

India, Middle East & Africa
P: (971) 4 3689743