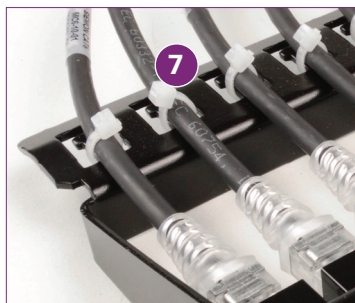
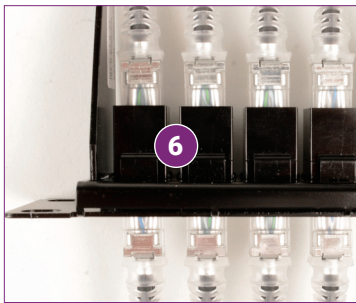
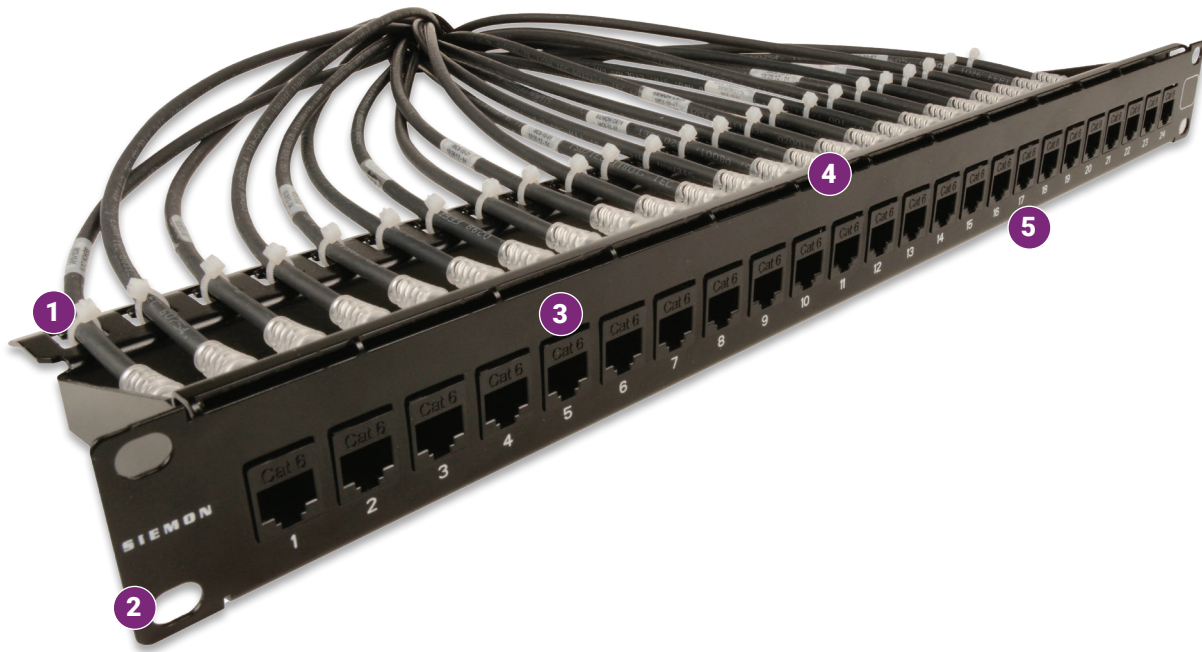


MAX® In-Line Coupler Panel Category 6 UTP

Regional Availability – Global



Siemon's Category 6 UTP In-Line Coupler Panel 1U rack-mount patch panel provides front and rear patching using standard RJ45 cables. When paired with Siemon's factory-tested solid and stranded Category 6 UTP patch cords, it enables rapid duplication of active equipment ports directly at the panel. The compact design includes a removable rear cable management bar for efficient and organized installations.



1. Management

RJ45 connections at the front and rear of the panel enables faster installation and deployment.

2. Mounting

Panels can be mounted directly on standard 19 inch rack or cabinet. CEA 310-E compliant.

3. Pre-Assembly

Panel pre-assembled with 24 category 6 UTP couplers.

4. Strength

Lightweight high-strength steel with black finish.

5. Labeling

Panel labeling area provided allowing unique panel identifiers.

6. In-Line Couplers

Allow you to plug a RJ45 plug into both sides of a coupler.

7. Cable Management

Integrated cable manager provides ability to secure cables at the rear of the panel for proper strain relief.

8. Latches

Individual coupler latches are recessed within the panel, creating a clean front surface.

Product Information

MECHANICAL – GENERAL

DIMENSIONS (L X W X H)	482.6 x 109.2 x 44.2mm (19 x 4.30 x 1.74 in.)
MOUNTING	CEA-310-E 19-inch (482.6mm) rack
MATERIAL	Panel: 16AWG CRS. Wire Manager: 14AWG CRS.
OPERATING MATERIAL	-10°C to 60°C (14°F to 140°F)
RELATIVE HUMIDITY	Up to 95%, Non-condensing
STORAGE TEMPERATURE	-40°C to 70°C (-40°F to 158°F)
INSERTION CYCLES	750 mating cycles
APPLICATION REQUIREMENTS	Maximum one In-Line coupler per channel
COLOR	Black

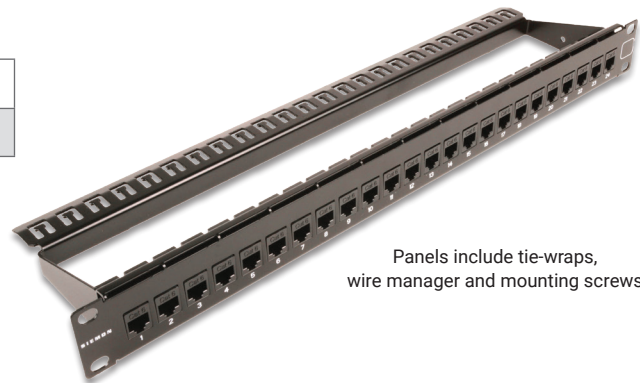
COMPLIANCE

ISO/IEC 11801-1 Ed. 1.0
IEC 60603-7-4
ANSI/TIA-568.2-E
ANSI/ TIA-1096-A
UL 1863

Ordering Information

MAX® In-Line Coupler Panel Category 6 UTP

Part Number	Description
MX-K-C6-IL-24	In-Line Coupler Panel, Category 6 UTP, 1U, Black



Panels include tie-wraps, wire manager and mounting screws



SCAN TO DOWNLOAD SPEC SHEET

Because we continuously improve our products, Siemon reserves the right to change specifications and availability without prior notice.

North America
P: (1) 860 945 4200

Mexico
P: (521) 556 387 7708/09/10

Latin America
P: (571) 657 1950/51/52

Europe
P: (44) 0 1932 571771

Asia Pacific
P: (61) 2 8977 7500

Siemon OEM Technologies
P: (1) 860 945 4213
www.siemon.com/OEM

China
P: (86) 215385 0303

India, Middle East & Africa
P: (971) 4 3689743