

LockIT™ Patch Cords

LockIT™ Patch Cords are designed to prevent unintended or unauthorized disconnection of the plug from an outlet. These tamper-proof patch cords are offered in both 26 & 28 AWG constructions and are available at Category 6 and 6A unshielded, and Category 6A shielded performance levels. Each of the cords requires the LockIT cord key for removal, but may be freely inserted into an outlet to secure the connection without needing the key. All LockIT cords have transparent low-profile boots with a red locking feature, allowing for the easy identification of secure connectivity.

LockIT cords are compatible with any standards compliant RJ45 outlet providing compatibility in a variety of applications, including: schools, retail stores, waiting areas as well as transportation and hospitality environments. The innovative design and inherent security capabilities also makes LockIT the the ideal solution for mission-critical network applications, such as: data centers, health care environments and government systems and is fully supported by applicable Siemon System Warranties.

Bend Strain Relief
The boot ensures proper bend relief, critical for Category 6 & 6A performance

Latch
The latch guard protects the plug from snagging when it is pulled through pathways

Security
Visible red locking tab helps to identify tamper-proof connectivity

High Performance
Our patented metallic isolator and internal load bar optimize transmission performance

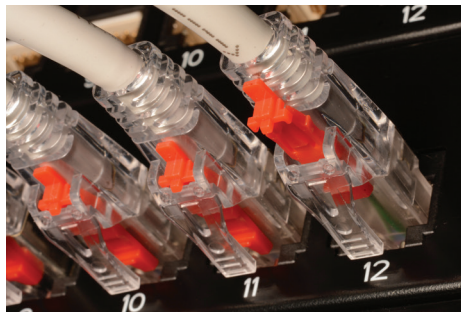
STANDARDS COMPLIANCE

- ISO/IEC 11801-1 Ed 1.0
- IEEE 802.3af (Type 1 PoE)
- IEEE 802.3at (Type 2 PoE)
- IEEE 802.3bt (Type 3 PoE)
- IEEE 802.3bt (Type 4 PoE)
- Power over HDBaseT (PoH)
- IEC 60603-7
- CM: UL US Listed
- IEC 60332-1, 60754, 61054, 61034
- TIA-968-A (formerly FCC Part 68 Subpart F)
- IEC 60332-3 (Category 6A UTP and S/FTP, 26 AWG only)
- ANSI/TIA-568.2-E

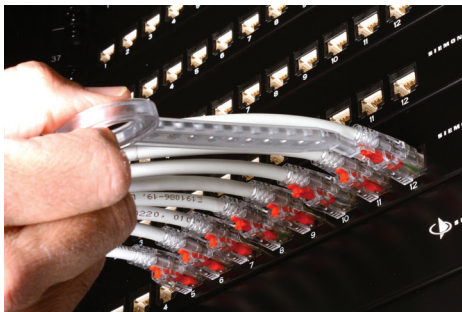
Cord Key
One key is included with every 10 cords purchased.

PowerGUARD+™

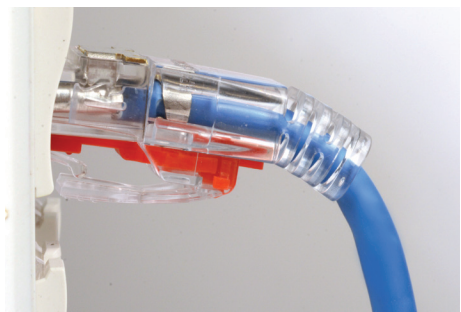
Data | Power | Reach | Delivered



Easy Installation
LockIT doesn't require a key to lock the cords in place, simply insert the red tab to secure it.



Simple Unlocking
The extended length of the LockIT key allows for easier access to unlock cords in high-density environments.



Robust Support
The ribbed boot design allows for effective bend relief ensuring high system performance.

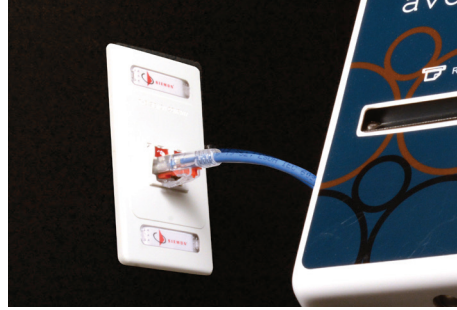
Applications

The LockIT™ system is a cost-effective way to control physical access to the network and is ideal for securing connections in public areas and shared spaces. The innovative design reduces the risk of severing network connections in mission-critical environments; when combined with simple implementation and management features this presents a robust solution for a wide range of applications and vertical markets.



Security Cameras

Prevent the unauthorized tampering or disconnection of security/surveillance cameras.



Transportation and Point of Sale Terminals

Prevent tampering or accidental disconnection at public ticketing terminals and self-service kiosks.

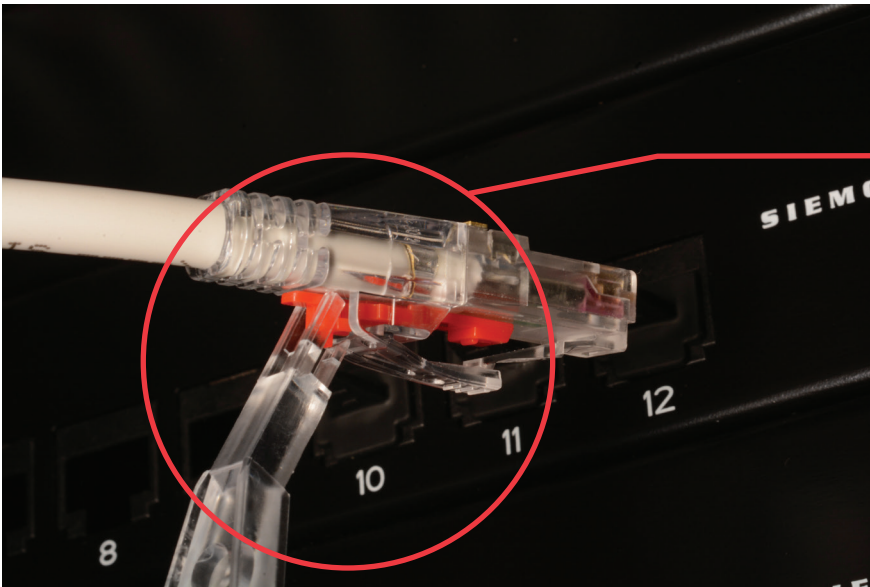


Entertainment and Hospitality

Prevent unauthorized disconnects and deters patch cord theft from outlets connected to digital displays in public areas and guest rooms.

LockIT Patch Cord Key

The LockIT Patch Cord Key is uniquely designed to unlock all LockIT patch cords. The extended length of the key allows users to easily unlock the plug in high-density environments. One key is included with every 10 cords purchased and is also available for purchase separately.



Performance Specifications

Mechanical - Cord Cable (Stranded)

	Cord Type	26AWG	28AWG
Cable OD (Nominal)	Category 6 UTP	5.3mm (0.20 in)	4.0mm (0.16 in)
	Category 6A UTP	6.3mm (0.25 in)	5.3mm (0.21 in)
	Category 6A Shielded	6.4mm (0.25 in)	5.5mm (0.22 in)
Bend Radius	Category 6 UTP	21mm (0.8 in)	16mm (0.63 in)
	Category 6A UTP	25mm (1.0 in)	21mm (0.84 in)
	Category 6A Shielded	38.4mm (1.5 in)	33mm (1.32 in)
Cord Series	LockIT to LockIT	LKP1-, LKP3-, LKP5-	LKP2-, LKP4-, LKP6-
	LockIT to RJ45	LKM1-, LKM3-, LKM5-	LKM2-, LKM4-, LKM6-
Wiring		T568A/B	T568A/B
Jacket Type		CM/LS0H	CM/LS0H

Electrical

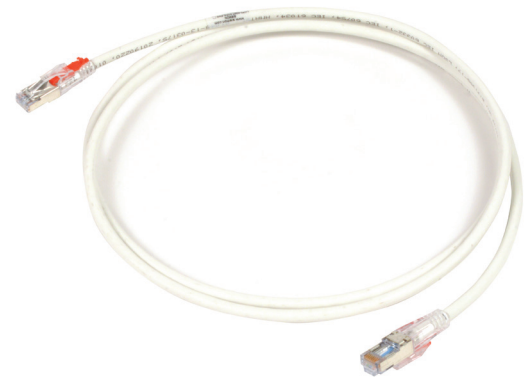
Contact Resistance	20mΩ
Input to Output Resistance	200mΩ
Min. Dielectric Withstand Voltage	1000 VAC Contact to Contact
Insulation Resistance	500MΩ
Compatibility	Category 6A, 6 and 5e
Current Rating @ 25°C	1.5A
Power Over Ethernet	PoE (Type 1,2,3,4) PoH

Mechanical - Plug

Number of Plug Insertion Cycles	2,500
Min. Plug Retention Force	50N (11.2 lbf)
Plug Compatibility	Compatible with RJ45 outlets
Cable to Plug Tensile Strength (min)	20lbs

Mechanical

Operating Temperature	-20 to 75°C (-4 to 167°F)
Flammability Rating	UL 94 V-0
Green Features	RoHS, Lead-Free, Halogen-Free, PVC Free
Plug Housing Materials	Polycarbonate
Contact Materials	50 Microinches Gold Plating or Equivalent
Plastic Materials	Flame Retardant Thermoplastic
Marking	Part Number, Length, Performance Level



LKM Series: LockIT to Standard Plug Cord

Universal Part Numbers

LockIT Patch Cord Key

Part Number	Description
LK-KEY-CLR	LockIT Patch Cord Key

North America Part Numbers

LockIT™ to LockIT

Gauge	Part Number	Description
26 AWG	LKP1-(XXX)F-(XX)DS	Category 6 UTP, Double-ended Locking Patch Cord, RJ45, Stranded 26 AWG, CM/LS0H, T568A/B
	LKP3-(XXX)F-(XX)DS	Category 6A UTP, Double-ended Locking Patch Cord, RJ45, Stranded 26 AWG, CM/LS0H, T568A/B
	LKP5-(XXX)F-(XX)DS	Category 6A S/FTP, Double-ended Locking Patch Cord, RJ45, Stranded 26 AWG, CM/LS0H, T568A/B
28 AWG	LKP2-(XXX)F-(XX)DS	Category 6 UTP, Double-ended Locking Patch Cord, RJ45, Stranded 28 AWG, CM/LS0H, T568A/B
	LKP4-(XXX)F-(XX)DS	Category 6A UTP, Double-ended Locking Patch Cord, RJ45, Stranded 28 AWG, CM/LS0H, T568A/B
	LKP6-(XXX)F-(XX)DS	Category 6A S/FTP, Double-ended Locking Patch Cord, RJ45, Stranded 28 AWG, CM/LS0H, T568A/B

LockIT to RJ45

Gauge	Part Number	Description
26 AWG	LKM1-(XXX)F-(XX)DS	Category 6 UTP, Locking-to-Standard RJ45 Patch Cord, Stranded 26 AWG, CM/LS0H, T568A/B
	LKM3-(XXX)F-(XX)DS	Category 6A UTP, Locking-to-Standard RJ45 Patch Cord, Stranded 26 AWG, CM/LS0H, T568A/B
	LKM5-(XXX)F-(XX)DS	Category 6A S/FTP, Locking-to-Standard RJ45 Patch Cord, Stranded 26 AWG, CM/LS0H, T568A/B
28 AWG	LKM2-(XXX)F-(XX)DS	Category 6 UTP, Locking-to-Standard RJ45 Patch Cord, Stranded 28 AWG, CM/LS0H, T568A/B
	LKM4-(XXX)F-(XX)DS	Category 6A UTP, Locking-to-Standard RJ45 Patch Cord, Stranded 28 AWG, CM/LS0H, T568A/B
	LKM6-(XXX)F-(XX)DS	Category 6A S/FTP, Locking-to-Standard RJ45 Patch Cord, Stranded 28 AWG, CM/LS0H, T568A/B

(XXX) to specify cord length in feet:

003 = 3 feet, 005 = 5 feet, 007 = 7 feet, 010 = 10 feet, 015 = 15 feet, 020 = 20 feet

(XX) to specify jacket color:

01 = Black, 02 = White, 03 = Red, 04 = Gray, 05 = Yellow, 06 = Blue, 07 = Green
Note: 08 = Violet and 09 = Orange are available with longer lead times and MOQs

International Part Numbers

LockIT™ to LockIT

Gauge	Part Number	Description
26 AWG	LKP1-(XXX)M-(XX)DS	Category 6 UTP, Double-ended Locking Patch Cord, RJ45, Stranded 26 AWG, CM/LS0H, T568A/B
	LKP3-(XXX)M-(XX)DS	Category 6A UTP, Double-ended Locking Patch Cord, RJ45, Stranded 26 AWG, CM/LS0H, T568A/B
	LKP5-(XXX)M-(XX)DS	Category 6A S/FTP, Double-ended Locking Patch Cord, RJ45, Stranded 26 AWG, CM/LS0H, T568A/B
28 AWG	LKP2-(XXX)M-(XX)DS	Category 6 UTP, Double-ended Locking Patch Cord, RJ45, Stranded 28 AWG, CM/LS0H, T568A/B
	LKP4-(XXX)M-(XX)DS	Category 6A UTP, Double-ended Locking Patch Cord, RJ45, Stranded 28 AWG, CM/LS0H, T568A/B
	LKP6-(XXX)M-(XX)DS	Category 6A S/FTP, Double-ended Locking Patch Cord, RJ45, Stranded 28 AWG, CM/LS0H, T568A/B

LockIT to RJ45

Gauge	Part Number	Description
26 AWG	LKM1-(XXX)M-(XX)DS	Category 6 UTP, Locking-to-Standard RJ45 Patch Cord, Stranded 26 AWG, CM/LS0H, T568A/B
	LKM3-(XXX)M-(XX)DS	Category 6A UTP, Locking-to-Standard RJ45 Patch Cord, Stranded 26 AWG, CM/LS0H, T568A/B
	LKM5-(XXX)M-(XX)DS	Category 6A S/FTP, Locking-to-Standard RJ45 Patch Cord, Stranded 26 AWG, CM/LS0H, T568A/B
28 AWG	LKM2-(XXX)M-(XX)DS	Category 6 UTP, Locking-to-Standard RJ45 Patch Cord, Stranded 28 AWG, CM/LS0H, T568A/B
	LKM4-(XXX)M-(XX)DS	Category 6A UTP, Locking-to-Standard RJ45 Patch Cord, Stranded 28 AWG, CM/LS0H, T568A/B
	LKM6-(XXX)M-(XX)DS	Category 6A S/FTP, Locking-to-Standard RJ45 Patch Cord, Stranded 28 AWG, CM/LS0H, T568A/B

(XXX) to specify cord length in meters:

001 = 1 meter, 1.5 = 1.5 meter, 002 = 2 meter, 003 = 3 meter,
004 = 4 meter, 005 = 5 meter, 7.5 = 7.5 meter

(XX) to specify jacket color:

01 = Black, 02 = White, 03 = Red, 04 = Gray, 05 = Yellow, 06 = Blue, 07 = Green
Note: 08 = Violet and 09 = Orange are available with longer lead times and MOQs



Because we continuously improve our products, Siemon reserves the right to change specifications and availability without prior notice.

North America
P: (1) 860 945 4200

Mexico
P: (521) 556 387 7708/09/10

Latin America
P: (571) 657 1950/51/52

Europe
P: (44) 0 1932 571771

Asia Pacific
P: (61) 2 8977 7500

Siemon OEM Technologies
P: (1) 860 945 4213
www.siemon.com/OEM

China
P: (86) 215385 0303

India, Middle East & Africa
P: (971) 4 3689743

SCAN TO DOWNLOAD
SPEC SHEET