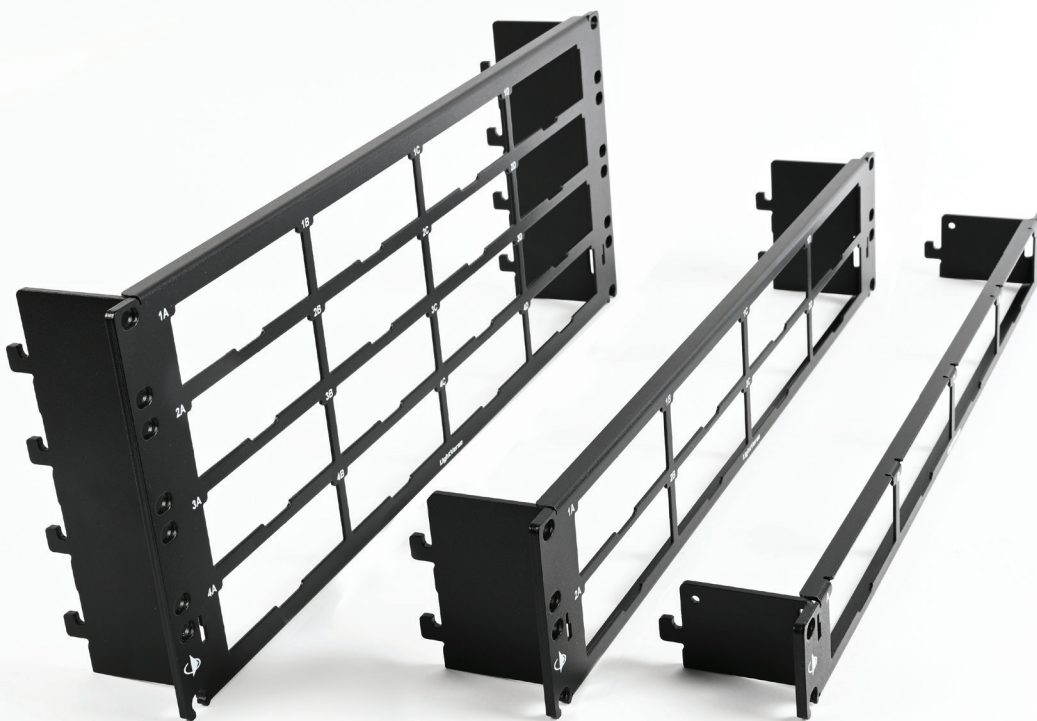


The Siemon LightVerse® system includes a range of Fiber Modular Patch Panels, designed to provide users with a flexible solution for deploying fiber optic connectivity in high-density data center and intelligent building environments where fast deployment and simple maintenance is required.

Available in 1U, 2U and 4U configurations, the LightVerse Fiber Modular Patch Panels support the broad range of industry leading LightVerse fiber optic connectivity, including patch, transition and splice termination options, up to 96 fibers per rack unit. Coupled with the optional toolless front and rear cable managers, the LightVerse Fiber Modular Patch Panels offer industry leading fiber support.



4U Fiber Modular Patch Panel

2U Fiber Modular Patch Panel

1U Fiber Modular Patch Panel

## Scalable Connectivity

The flat Fiber Modular Patch Panels are available in 1U (up to 96 fibers), 2U (up to 192 fibers) and 4U (up to 384 fibers) with optional front and rear cable managers. The modular patch panels support our comprehensive range of singlemode and multimode LightVerse splice, transition and pass-through termination types.

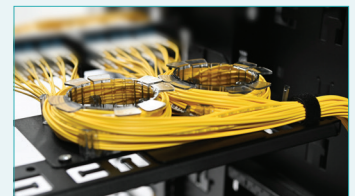
## Compact Design

The Fiber Modular Patch Panels provide a slimline and yet robust footprint. Constructed from high strength steel with a scratch-resistant finish, users can connect their critical connectivity with confidence.

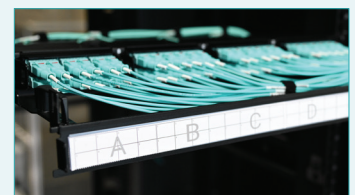
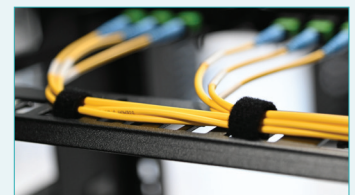
## Improved Accessibility

Our patch panels improve hand access to connectivity especially in Cable Tray Rack (CTR) overhead applications, providing 360 degree access from the front and rear or from above and below.

## Optimized Cable Management



Optional toolless front and rear cable managers are also available to support the Fiber Modular Patch Panels. This allows users to easily control their fiber optic cabling and enables MAC work easily, all while maintaining optimum performance.



The LightVerse Fiber Modular Patch Panels are designed to accommodate 1 to 4 rear cable managers, depending on your network requirements.

## MECHANICAL

### LightVerse® Fiber Modular Patch Panels

OPERATING TEMPERATURE	-20 to 70° C (-4 to 158° F)
FLAMMABILITY RATING	UL 94 V-0
PLASTIC MATERIALS	Flame retardant thermoplastic
DIMENSIONS (L X W X H)	<b>1U Patch Panel:</b> 482.6mm (19") x 68.45mm (2.695") x 43.12mm (1.698") <b>2U Patch Panel:</b> 482.6mm (19") x 68.45mm (2.695") x 87.50mm (3.445") <b>4U Patch Panel:</b> 482.6mm (19") x 68.45mm (2.695") x 176.47mm (6.948")
MOUNTING CAPABILITY	CEA-310-E 482.6mm (19") rack
CONSTRUCTION MATERIAL	Patch Panel: 16 gauge cold rolled steel, Black powder coat Bracket: 11 gauge cold rolled steel, Black powder coat

### Front Cable Managers

OPERATING TEMPERATURE	-20 to 70° C (-4 to 158° F)
FLAMMABILITY RATING	UL 94 V-0
DIMENSIONS (L X W X H)	<b>1U Front Cable Manager:</b> 454.50mm (17.894") x 154.5mm (6.083") x 42.05mm (1.656") <b>2U Front Cable Manager:</b> 459.90mm (18.106") x 154.5mm (6.083") x 83.65mm (3.293") <b>4U Front Cable Manager:</b> 459.90mm (18.106") x 154.5mm (6.083") x 169.25mm (6.663")
CONSTRUCTION MATERIAL	Base: 16 gauge cold rolled steel, Black powder coat Door: 20 gauge cold rolled steel, Black powder coat

### Rear Cable Manager

OPERATING TEMPERATURE	-20 to 70° C (-4 to 158° F)
DIMENSIONS (L X W X H)	455mm (18") x 214mm (8.43") x 28mm (1.10")
CONSTRUCTION MATERIAL	14 gauge cold rolled steel, Black powder coat

### Fiber Spool Kit

OPERATING TEMPERATURE	-20 to 70° C (-4 to 158° F)
FLAMMABILITY RATING	UL 94 V-0
PLASTIC MATERIALS	Flame retardant thermoplastic
DIMENSIONS (L X W X H)	213mm (8.39") x 120mm (4.72") x 7mm (0.28")
CONSTRUCTION MATERIAL	20 gauge cold rolled steel, Black powder coat

## COMPLIANCE

ISO/IEC 11801 (Patch panels)
CEA-310-E
UL/cUL: UL 1863, CSA C22.2 (Patch panels)
IEC-62368-1 Ed 2 (Patch panels, front and rear cable managers, fiber spool kit)

**SIEMON  
SUSTAINABILITY  
PLEDGE**





**Eco-Friendly Packaging:**

In line with our ongoing commitment to sustainability, the packaging for this solution is RoHS, lead-free, halogen-free and PVC-free.



*Scan here to learn more about the Siemon Sustainability Pledge.*

# Ordering Information

## LightVerse® Fiber Modular Patch Panels

Part Number	Description
LVP-1U-MS-A01A	LightVerse Fiber Modular Patch Panel, Flat, 1U
LVP-2U-MS-A01A	LightVerse Fiber Modular Patch Panel, Flat, 2U
LVP-4U-MS-A01A	LightVerse Fiber Modular Patch Panel, Flat, 4U

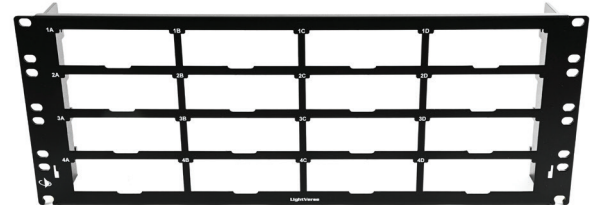
Panels include mounting hardware.



1U Fiber Modular Patch Panel



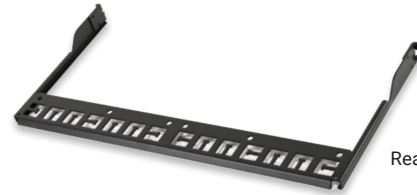
2U Fiber Modular Patch Panel



4U Fiber Modular Patch Panel

## Related Products

Part Number	Description
LV-FCM-1U-01A	Front Cable Manager, 1U
LV-FCM-2U-01A	Front Cable Manager, 2U
LV-FCM-4U-01A	Front Cable Manager, 4U
LV-RCM-1U-01A	Rear Cable Manager*
LV-RSM-KIT-A	Fiber Spool Kit for Rear Cable Manager



Rear Cable Manager



Fiber Spool Kit for Rear Cable Manager

\*Rear Cable Manager can be used on all patch panel options:  
 1U PP = 1 RCM • 2U PP = up to 2 RCMs • 4U PP = up to 4 RCMs



1U Front Cable Manager



2U Front Cable Manager



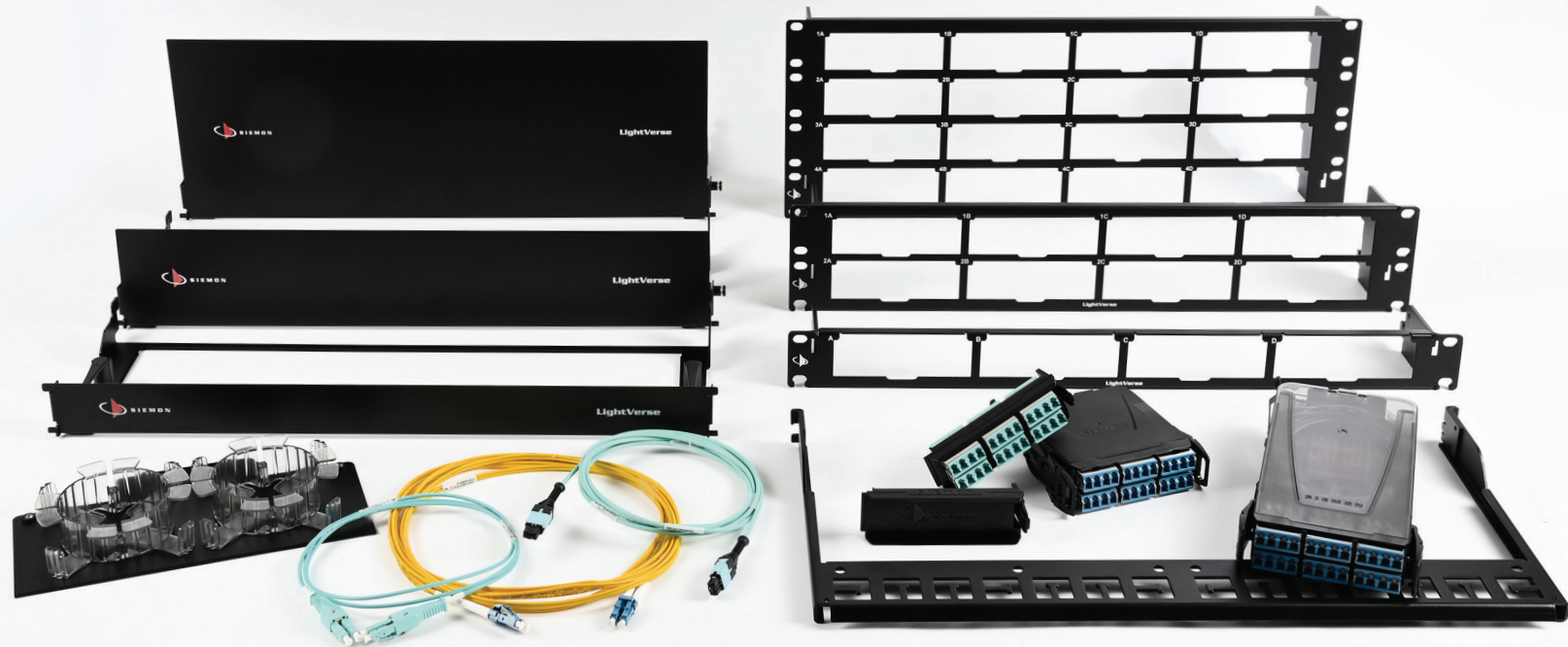
4U Front Cable Manager



As well as providing protection for your fiber jumpers, our front cable managers include an integrated label holder, allowing users to easily access and manage their connections.

# LightVerse®

Unlock a Universe of Possibilities



Siemon provides a range of high-performance fiber connectivity options compatible with our LightVerse® Fiber Modular Patch Panels. These include:

## Fiber Connectivity:

View our full LightVerse fiber optic modules offering [here](#).

View our full LightVerse fiber optic adapter plates offering [here](#).

View our full LightVerse fiber optic splice cassettes offering [here](#).

Siemon has a comprehensive range of high performance pre-terminated fiber optic trunks. These include:

- [Traditional Fiber Trunks](#)
- [MTP-to-LC/SC Trunks](#)
- [MTP-to-MTP Trunks](#)

Because we continuously improve our products, Siemon reserves the right to change specifications and availability without prior notice.

**North America**  
P: (1) 860 945 4200

**Mexico**  
P: (521) 556 387 7708/09/10

**Latin America**  
P: (571) 657 1950/51/52

**Europe**  
P: (44) 0 1932 571771

**China**  
P: (86) 215385 0303

**India, Middle East & Africa**  
P: (971) 4 3689743

**Asia Pacific**  
P: (61) 2 8977 7500

**Siemon Interconnect Solutions**  
P: (1) 860 945 4213  
[www.siemon.com/SIS](http://www.siemon.com/SIS)

[www.siemon.com/lightverse](http://www.siemon.com/lightverse)

