

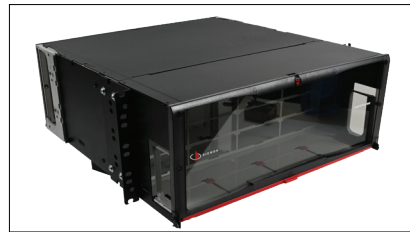
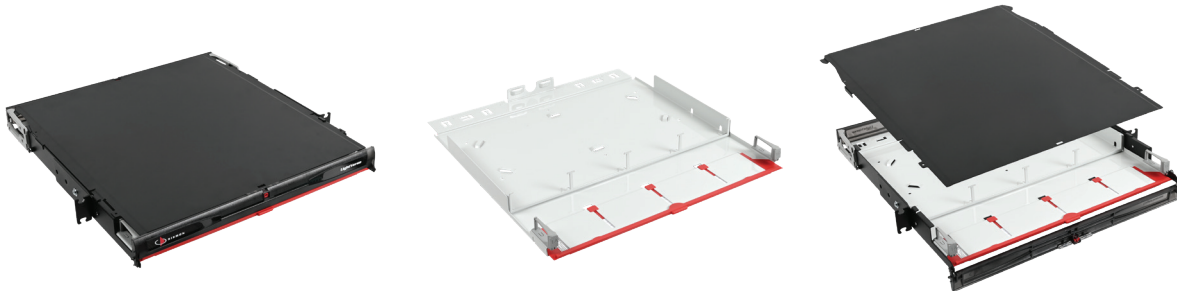
LightVerse® Fiber Optic Cabling System

LightVerse Enclosures

Regional Availability - APAC, China, IMEA, ECA

The Siemon LightVerse system includes a range of sleek enclosures available in Core, Plus and Pro options suitable for a wide variety of application needs. Each LightVerse has the ability to support up to 96 fibers within 1U of rack space for all termination methods. Whether its pre-terminated, field terminated or splice terminated, LightVerse has got you covered.

The range starts with our LightVerse Core model, which offer basic functionality—including fixed fiber termination, and limited configuration options. LightVerse Plus builds upon the functionality of the Core model, introducing additional functionality and moveability with slide out drawers to the product family. The LightVerse Pro level enclosures build further introducing complete modularity, moveability and flexibility, making it ideal for resolving your more complex challenges



Versatile Sliding Tray

The high-contrast white sliding tray aids with visibility in dark spaces and supports 2 stop locations. The tray can also be fully removed if needed to better support splicing applications.

Flexible Cable Management

Each LightVerse enclosure includes integrated front cable managers and optional rear clips, which allow users to easily manage their fiber jumpers from a variety of access points.

Simplified Installation

All LightVerse enclosures feature slotted holes on the bottom of the enclosure which reduce weight and improve airflow. The result is a robust enclosure that can still be installed by one person, even the 4U.



EXCEPTIONAL ACCESS

Each LightVerse enclosure includes a removable top cover and an integrated label holder which can be accessed even when the door is closed, providing users with increased access options for installation as well as for day to day moves, adds and changes.



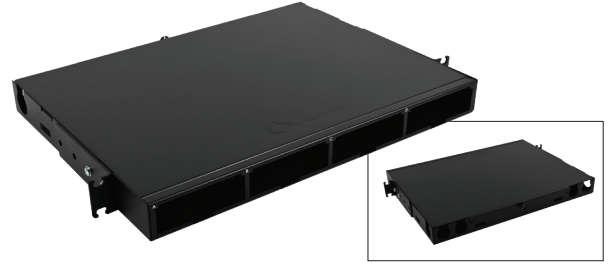
SIMPLIFIED MANAGEMENT

The unique design of our LightVerse system allows the plug and play modules and splice cassettes to be installed or removed from the front or rear of the enclosure, allowing maximum flexibility for day-to-day management.

Product Information

LightVerse® Core

| Part Number | Description |
|----------------|--|
| LVE-1U-MS-C01A | 1U, Fixed Panel, Modular Mount, 4 Adapter Plate Openings |



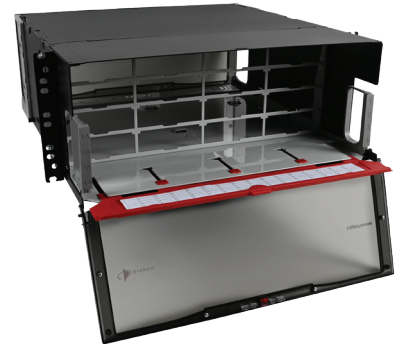
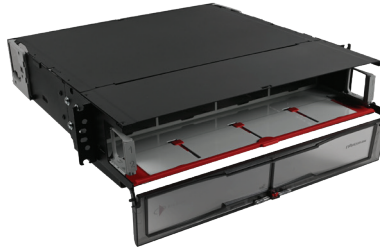
LightVerse Plus

| Part Number | Description |
|----------------|---|
| LVE-1U-MD-T01A | 1U, Sliding Drawer, Modular Mount, 4 Adapter Plate Openings |



LightVerse Pro

| Part Number | Description |
|----------------|--|
| LVE-1U-MD-P01A | 1U, Sliding Drawer, Modular Mount, 4 Adapter Plate Openings |
| LVE-2U-MD-P01A | 2U, Sliding Drawer, Modular Mount, 8 Adapter Plate Openings |
| LVE-4U-MD-P01A | 4U, Sliding Drawer, Modular Mount, 16 Adapter Plate Openings |



Physical Attributes

| Part Number | Weight | Dimensions | Materials |
|--------------------|-----------|----------------------------|---|
| LightVerse 1U Core | 8 lbs | 19" L x 13" D x 1.7" H | Cold Rolled Steel |
| LightVerse 1U Plus | 15 lbs | 19" L x 14.5" D x 1.7" H | Cold Rolled Steel and Flame Retardant Thermoplastic |
| LightVerse 1U Pro | 20.25 lbs | 19.3" L x 20.5" D x 1.7" H | Cold Rolled Steel and Flame Retardant Thermoplastic |
| LightVerse 2U Pro | 16.92 lbs | 19.3" L x 20.5" D x 3.4" H | Aluminum, Cold Rolled Steel and Flame Retardant Thermoplastic |
| LightVerse 4U Pro | 19.76 lbs | 19.3" L x 20.5" D x 6.9" H | Aluminum, Cold Rolled Steel and Flame Retardant Thermoplastic |

Because we continuously improve our products, Siemon reserves the right to change specifications and availability without prior notice.

| | | | | | |
|---|--|---|--|-------------------------------------|--|
| North America P: (1) 860 945 4200 | Asia Pacific P: (61) 2 8977 7500 | Latin America P: (571) 657 1950/51/52 | Europe P: (44) 0 1932 571771 | China P: (86) 215385 0303 | India, Middle East & Africa P: (971) 4 3689743 |
|---|--|---|--|-------------------------------------|--|

| | |
|---|--|
| Siemon Interconnect Solutions P: (1) 860 945 4213 www.siemon.com/SIS | Mexico P: (521) 556 387 7708/09/10 |
|---|--|