

LightStack® 8 Fiber Connectivity System

Regional Availability – Global



With superior best-in-class features, Siemon's LightStack 8 ultra-high-density fiber Plug and Play system offers superior density, port access and cable management in a sleek, modern platform that easily supports today's advanced data center or enterprise networking environments, while providing fast, seamless migration to higher BASE-8 applications.



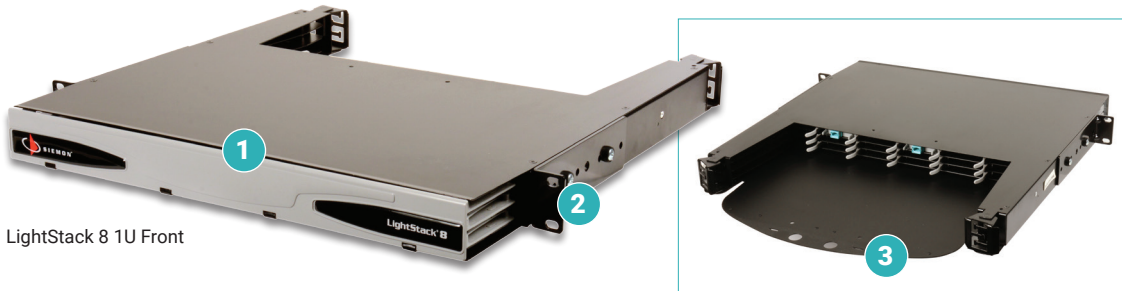
The Ultimate for BASE-8 Ultra-High Density Connectivity



LightStack®
Expand Your Possibilities

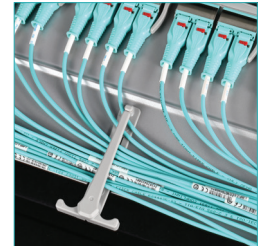
LightStack® 8 Fiber Enclosures

Designed for the maximum flexibility with pay as you grow plug and play BASE-8 connectivity in mind, Siemon's LightStack 8 fiber enclosures supports up to 144 fibers in a single rack unit in an 8-fiber configuration.



LightStack 8 1U Front

LightStack 8 1U Rear



Cable Management Clips
Unlatch and swing open for full access to any jumper.



LightStack 8 4U Front

LightStack 8 4U Rear



Strain Relief
Swivel tie down allows for simplistic approach for anchoring trunks and eliminating pinch points.

1. Visually Appealing Magnetic Door

Easy to open and close and eliminates potential pinch points.

2. Mounting Options

Rack mounting brackets can be attached at any of 3 horizontal positions.

3. Sliding Bottom Rear Drawer

Acts as a rear cable divider between stacked enclosures (in the out position). Pushes inward to provide complete access to connectivity at the rear of stacked enclosures.



Module Insertion and Removal

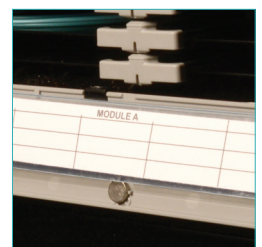
Can be quickly and easily installed from the front or rear of the enclosure.

Product Information

	Height	Width	Depth	Weight	Color	Label Size
LIGHTSTACK 8 1U	43.9mm (1.73 in.)	482.3mm (18.99 in.)	530.6mm (20.89 in.)	9.53kg (21 lbs.)	Gray enclosure, Gray door	204.5mm x 23.5mm (8.05 in. x .925 in.)
LIGHTSTACK 8 4U	176.8mm (6.96 in.)	482.3mm (18.99 in.)	530.6mm (20.89 in.)	23.58kg (52 lbs.)	Gray enclosure, Black door	204.5mm x 93mm (8.05 in. x 3.66 in.)

Ordering Information

Part Number	Description
LS8-1U-01	1U enclosure, 18 openings, 144 LC fibers or 864 MTP fibers, Mounts in 19 in. racks or cabinets
LS8-4U-01	4U enclosure, 72 openings, 576 LC fibers or 3456 MTP fibers, Mounts in 19 in. racks or cabinets

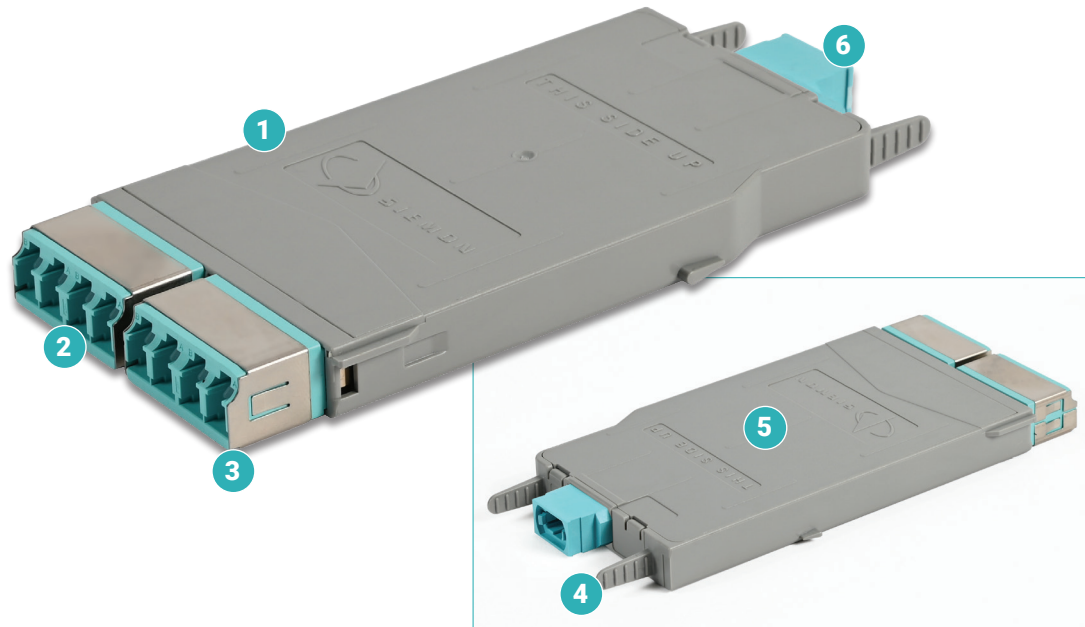


Innovative Labeling Solution and Port ID

Drop-down label strip holder for high visibility..

LightStack® 8 Fiber Modules

Siemon's LightStack 8 MTP-to-LC Ultra-Low-Loss Plug and Play transition modules deliver a quick and efficient way to deploy high-performance fiber cabling in a low-profile, high density package. Up to 18 of these ultra-slim modules can be installed in a single 1U LightStack 8 enclosure, seamlessly providing up to 144 easily-managed LC fiber ports. Available in OM4 multimode and singlemode configurations, LightStack 8 offers industry-leading loss performance of just 0.35dB module for multimode, and 0.50dB for singlemode.



1. Ultra Slim Design

LightStack 8 modules have an ultra slim design to achieve maximum fiber density.

2. High Fiber Count

Up to 8-fiber count per module.

3. Shuttered LC Adapters

Small plastic shutter door that opens upon insertion without touching the connector endface and springs back into the closed position upon removal to ensure protection of empty ports.

4. Rear Module Handles

Handles in the rear of module help facilitate removal from the back of the enclosure.

5. Ultra-Low-Loss

Ultra-low-loss performance.

6. Standard Interfaces

Base-8 MTP to 4 duplex LCs available in OM4 multimode and singlemode.

Product Information

	Multimode		Singlemode	
	Insertion Loss (dB)	Return Loss (dB)	Insertion Loss (dB)	Return Loss (dB)
MTP	0.20	20	0.30	60
LC	0.15	30	0.20	55
MTP TO LC MODULE	0.35	20	0.50	55

Ordering Information

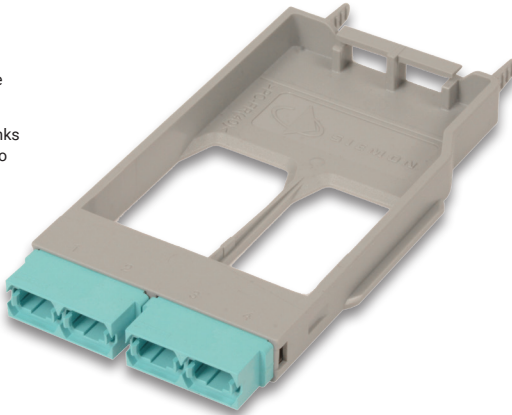
Part Number	Description
LSF8-LS5V-04U	Module, 8 MTP-to-LC, Ultra-low-loss, OM4, XGLO 550, Shutter, Aqua LC adapters, Universal polarity, Unpinned, Aqua MTP adapters
LSF8-LSSM-04U	Module, 8 MTP-to-LC, Ultra-low-loss, OS2 XGLO, Shutter, Blue LC adapters, Universal polarity, Unpinned, Black MTP adapters

LightStack® 8 Fiber Adapter Plates

Designed to support all your BASE-8 applications, LightStack 8 Ultra-Low-Loss MTP pass-through adapters are available in designs supporting up to 32 fibers per adapter. The 4-port adapter plates are offered in both key up and key down orientations to support all polarity methods. LightStack 8 also supports an 8-fiber LC pass through adapter plate for all your networking needs.

MTP Adapter Plate

- Ultra-slim design to achieve maximum fiber density.
- Used with BASE-8 MTP trunks and MTP jumpers or MTP to LC cords.
- Up to 32-fiber count.
- Handles in the rear of module helps facilitate removal from the back of the enclosure.



Ordering Information

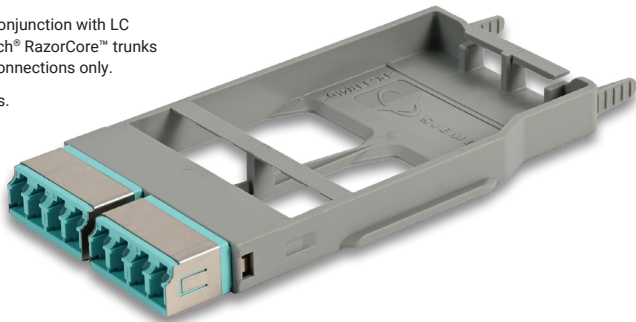
LS8-MP (X) - 04 (X) (XX)

MTP PORT COUNT	KEY ORIENTATION	ADAPTER COLOR
4 = 4 MTP Port	B = Type-B (key up to key up) C = Type-A (key up to key down)	AQ = Aqua** BK = Black** GR = Gray*

*Key Orientation B Only **Key Orientation C Only

LC Adapter Plate

- Used in conjunction with LC BladePatch® RazorCore™ trunks for rear connections only.
- 8 LC fibers.



Ordering Information

LS8 - L (X) 8 - 04C - (XX)

SHUTTER DOOR OPTION	ADAPTER COLOR
S = Shuttered LC	AQ = Aqua BL = Blue



All LC adapter plates include shuttered adapters, these adapters feature a small plastic shutter door that opens upon insertion without touching the connector endface and springs back into the closed position upon removal to ensure protection of empty ports.

Siemon has a comprehensive range of high performance pre-terminated fiber optic trunks. These include:

- [Traditional Fiber Trunks](#)
- [MTP-to-LC/SC Trunks](#)
- [MTP-to-MTP Trunks](#)



SCAN TO DOWNLOAD SPEC SHEET

Because we continuously improve our products, Siemon reserves the right to change specifications and availability without prior notice.

North America
P: (1) 860 945 4200

Mexico
P: (521) 556 387 7708/09/10

Latin America
P: (571) 657 1950/51/52

Europe
P: (44) 0 1932 571771

Asia Pacific
P: (61) 2 8977 7500

Siemon OEM Technologies
P: (1) 860 945 4213
www.siemon.com/OEM

China
P: (86) 215385 0303

India, Middle East & Africa
P: (971) 4 3689743