

# LC BladePatch<sup>®</sup>

Siemon's LC BladePatch duplex jumper offers a unique solution for high-density fiber optic patching environments. It features a revolutionary and innovative push-pull boot design to control the latch, enabling easy access and removal in tight-fitting areas. The LC BladePatch utilizes a smaller diameter uni-tube cable design which reduces cable pathway congestion improving air flow and increasing energy efficiency while simplifying overall cable management. The LC BladePatch provides low-loss performance for Multimode and Singlemode supporting the precise optical performance requirements for high speed networks and improving network performance. The LC BladePatch is ideal for patching high density blade servers, patch panels and equipment.

XGLO cable assemblies feature premium fibre that meets IEEE, specifications for OM3 and OM4 fiber. In addition, these assemblies offer a superior connector polish that meets stringent Telcordia and ISO/IEC specifications for end-face geometry and exceeds all ANSI/TIA and ISO/IEC insertion loss and return loss requirements. These precision cable assemblies are warranted for 20 years when installed in a qualified XGLO system. 100% inspection ensures superior performance and quality.

**Innovative, patent-pending push-pull boot design to control the latch.**

- Enhances installation and removal access in high density patching environments

**Low profile boot design optimizes side-stackability**


**Designed specifically for high density data center applications and high density blade servers**

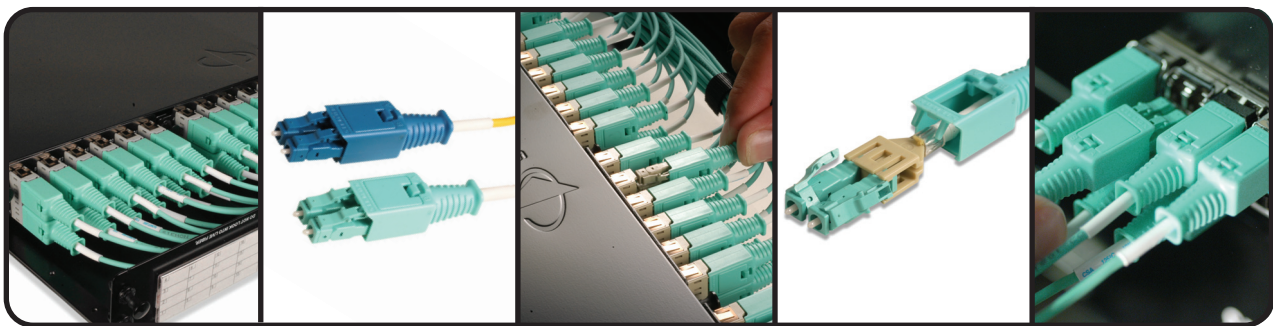
**Patent-pending rotating latch design for easy polarity change**

- Latch-only rotation to eliminate potential connector and cable damage
- Clear identification if a polarity change has been made

**Smaller diameter uni-tube duplex cable design**

- Reduces cable pathway congestion
- Improves airflow and energy efficiency
- Simplifies cable management
- OFNR, OFNP, LSOH

 **RoHS Compliant**



Low profile boot design optimizes side-stackability

OM3 and OM4 50/125 Multimode and OS1/OS2 Singlemode (UPC)

The push-pull design enables easy access and removal via the boot in tight-fitting areas

Rotating latch design eliminates potential fiber damage during polarity changes

Fits within any standard LC adapter opening or LC SFP module

Note: Compatible with industry compliant non-shutter LC adapters. When using internal shutter LC adapters, the LC BladePatch is only compatible with the Siemon version

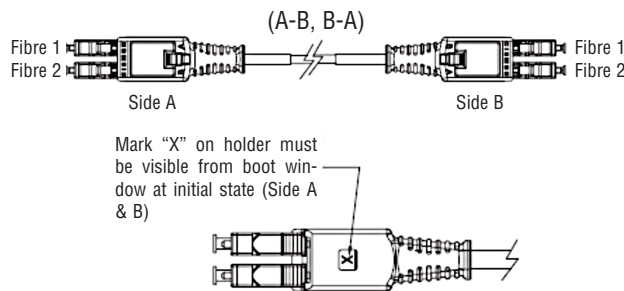
# Product Information

## PERFORMANCE SPECIFICATIONS

	OM3 50/125µm Multimode			OM4 50/125µm Multimode			OS1/OS2 Singlemode
<b>Wavelength (nm)</b>	850	1300	850*	850	1300	850*	1310/1550nm
<b>Min. Cable Bandwidth (MHz*km)</b>	1500 (OFL)	500 (OFL)	2000 (EMB)	3500 (OFL)	500 (OFL)	4700 (EMB)	N/A
<b>Max. Insertion Loss (dB)</b>	0.15 (0.10 Typical)			0.15 (0.10 Typical)			0.25 (0.10 Typical)
<b>Min. Return Loss (dB)</b>	30 (35 Typical)			30 (35 Typical)			55 (60 Typical)

\*Laser Bandwidth

### Polarity Option - RFP (Reverse Fibre Position)



### Ordering Information:

FBP-(XX)(X)(XX)(X)(XX)-(XXX)(XX)(X) . . . . .XGLO LC BladePatch: reverse fibre position, Multimode OM3, OM4 50/125µm Singlemode - OS1/OS2

**Side A - Connector**  
LC = LC

**Side A - Mode/Performance**  
Blank = Multimode  
U = UPC Singlemode

**Side B - Connector**  
LC = LC

**Side B - Mode/Performance**  
Blank = Multimode  
U = UPC Singlemode

**Fibre Type**  
5L = OM3 XGLO 300 50/125 Multimode  
5V = OM4 XGLO 550 50/125 Multimode  
L = OS1/OS2 Singlemode

**Package**  
Blank = Non Bulk  
B = Bulk  
Available in lengths up to 5 meters (16.4 ft.) or less.  
Remove dashes "-" and add "B" to the end of the part number for bulk pack of 100 jumpers (10 per bag)

**Jacket Rating/Colour**  
Blank = Riser (OFNR) Yellow cable, Blue connectivity  
P = Plenum (OFNP) Yellow cable, Blue connectivity  
H = LSOH (IEC 60332-3C) Yellow cable, Blue connectivity  
AQ = Riser (OFNR) Aqua cable & connectivity (OM3, OM4)  
AP = Plenum (OFNP) Aqua cable & connectivity (OM3, OM4)  
AH = LSOH (IEC 60332-3C) Aqua cable & connectivity (OM3, OM4)  
EQ = Riser (OFNR) Erika Violet cable & connectivity (OM4 only)  
EP = Plenum (OFNP) Erika Violet cable & connectivity (OM4 only)  
EH = LSOH (IEC 60332-3C) Erika Violet cable & connectivity (OM4 only)

**Length**  
**Examples:**  
01 = 1 metre (3 ft)  
100 = 100 metre (328 ft)

Note: Polarity CFP (Continuous fibre position) is available as an option.  
Remove the first dash "-" and add C to the end of the part number.  
Example: FBPLCLC5L-(XX)AQC

Because we continuously improve our products, Siemon reserves the right to change specifications and availability without prior notice.

**Worldwide Headquarters**  
**North America**  
Watertown, CT USA  
Phone (1) 860 945 4200

**Regional Headquarters**  
**Europe Africa**  
Chertsey, Surrey, England  
Phone (44) 0 1932 571771

**Regional Headquarters**  
**China**  
Shanghai, P.R. China  
Phone (86) 215385 0303

**Regional Headquarters**  
**Latin America**  
Bogota, Colombia  
Phone (571) 657 1950/51/52

**Regional Headquarters**  
**India Middle East**  
Dubai, United Arab Emirates  
Phone (971) 4 3689743

**Regional Headquarters**  
**Asia Pacific**  
Sydney, Australia  
Phone (61) 2 8977 7500

**Siemon Interconnect Solutions**  
**Watertown, CT USA**  
Phone (1) 860 945 4213 US  
www.siemon.com/SIS