

IC[®]6 UTP Solid Modular Cords - International

Siemon's Category 6 IC solid single-ended and double-ended modular cords are designed for use in Category 6 applications where one end is plugged into a patch panel in a consolidation point (CP) and the other end is terminated to the back of a work area outlet or in a cross connect where one end is terminated to the back of a patch panel and the other end is plugged into equipment. The cords are 100% factory transmission tested to 250 MHz and feature the same plug construction used in Siemon's stranded Category 6 modular cords.

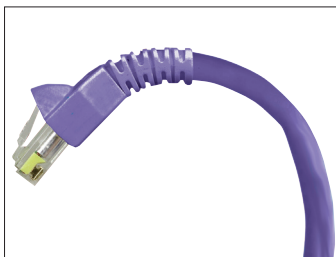
Double and single-end versions available both in T568A and T568B wiring schemes

Plug geometry meets ANSI/TIA -1096-A, IEC 60603-7, and TIA 1096-A specifications for modular plugs

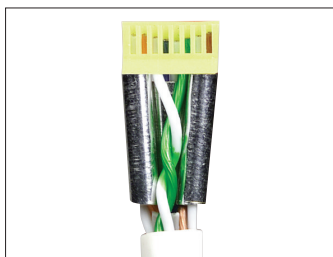
All Siemon factory assembled cords are 100% tested to 250 MHz

Slide on strain relief boots feature a latch guard to protect plug latch from snagging when pulling cords through pathways or cable managers

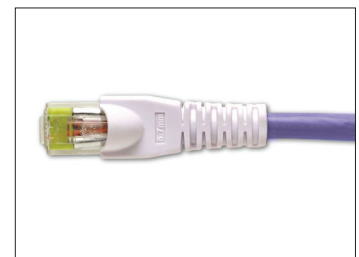
Modular plugs provide long-term resistance to corrosion from humidity, extreme temperatures, and airborne contaminants



Strain and bend relief provides improved plug-to-cable retention and maximum performance by preventing pair deformation, as caused by mechanical strain



Patented metallic isolator shields pairs inside plug for optimum NEXT performance



IC 6 modular cords are backward compatible with all Siemon lower category-rated outlets. For example, when IC 6 modular cords are used in a System 5e[®] channel with Siemon Category 5e outlets, we guarantee Category 5e system performance.

Performance Specifications*

ELECTRICAL

| | |
|--|---------------------------|
| Contact Resistance | 20Ω |
| Input to Output DC Resistance | 200Ω |
| Min. Dielectric Withstand Voltage (contact to contact) | 1000 V DC or AC peak |
| Insulation Resistance | 500 mΩ |
| Compatibility | Backwards to Category 5e |
| Current Rating @ 25°C | 1.5 A |
| Power over Ethernet | Suitable for PoE and PoE+ |

MECHANICAL - GENERAL

| | |
|-----------------------|---|
| Operating Temperature | -10 to 60 °C, (14 to 140 °F) |
| Flammability Rating | UL 94 V-0 |
| Green Features | RoHS, lead-free, halogen-free, PVC free |
| Contact Materials | copper alloy |
| Plastic Materials | Flame retardant thermoplastic |
| Marking | P/N, length, performance level, QC |

MECHANICAL - JACK

| | |
|---------------------------------|------------------------------|
| Number of Plug Insertion Cycles | 750 |
| Min. Plug Retention Force | 50N (11.2 lbf) |
| Plug Compatibility | Compatible with RJ45 outlets |

Ordering Information

System 6® IC Modular Cords

Part Number Description

- IC6-8A-(XX)M-B(XX)L... System 6 IC, single-ended, 4-pair UTP 23 AWG solid, modular cord, violet jacket with colored boot T568B, LSOH
- IC6-8T-(XX)M-B(XX)L ... System 6 IC, single-ended, 4-pair UTP 23 AWG solid, modular cord, violet jacket with colored boot, T568A, LSOH

Use 1st (XX) to specify cord length: 03 = 03m ((9.8 ft.), 05 = 05m (16.4 ft.), 10 = 10m (32.8 ft.), 15 = 15m (49.2 ft.), 20 = 20m (65.6 ft.)

Use 2nd (XX) to specify color of boot: 01 = Black, 02 = White, 03 = Red, 04 = Gray, 05 = Yellow, 06 = Blue, 07 = Green

Add "D" to denote double-ended.

*Refer to Siemon Cable spec sheets for additional performance, electrical and mechanical information.

Because we continuously improve our products, Siemon reserves the right to change specifications and availability without prior notice.

| | | | | | |
|---|--|---|--|-------------------------------------|--|
| North America P: (1) 860 945 4200 | Asia Pacific P: (61) 2 8977 7500 | Latin America P: (571) 657 1950/51/52 | Europe P: (44) 0 1932 571771 | China P: (86) 215385 0303 | India Middle East P: (971) 4 3689743 |
|---|--|---|--|-------------------------------------|--|

Siemon Interconnect Solutions
P: (1) 860 945 4213
www.siemon.com/SIS