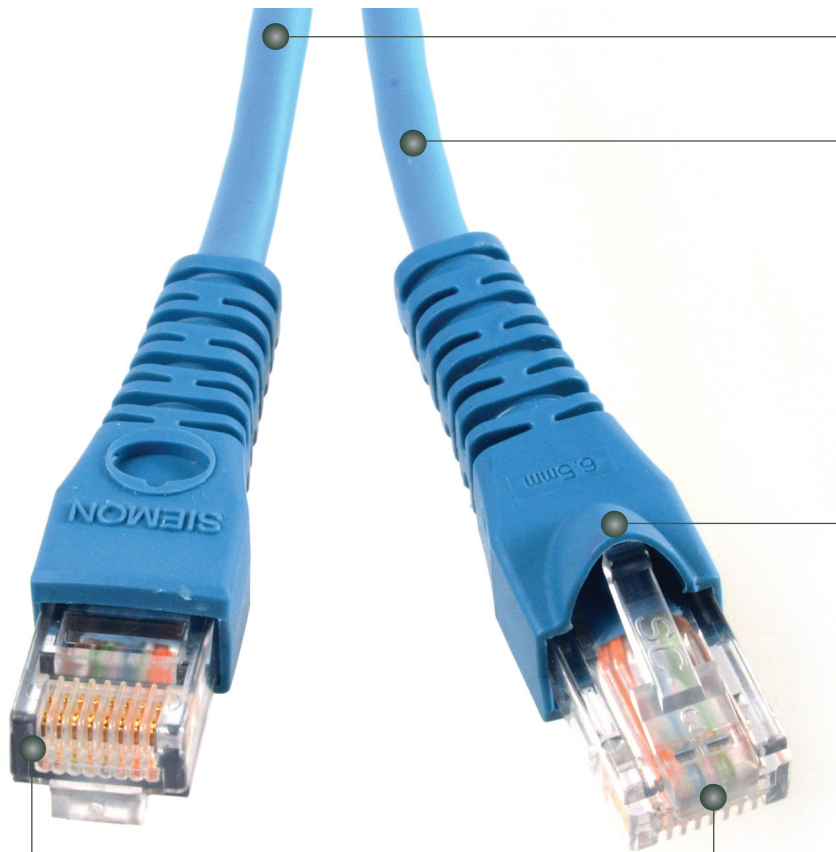


IC[®] 5e UTP Solid Modular Cords - International

Siemon's Category 5e IC solid conductor modular cords are designed for use in Category 5e applications requiring a consolidation point (CP) or cross-connect (as an equipment cord). The cords are 100% factory transmission tested. These cords are available in CM, LSOH, and riser jacket and can be ordered single-ended for direct terminations or double-ended for extended length direct connections.



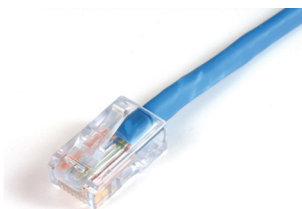
Double and single-end versions available both in T568A and T568B wiring schemes

All Siemon factory assembled cords are 100% transmission tested

Slide on strain relief boots feature a latch guard to protect plug latch from snagging when pulling cords through pathways or cable managers

Plug geometry meets IEC 60603-7, and TIA 1096-A specifications for modular plugs

Modular plugs provide long-term resistance to corrosion from humidity, extreme temperatures, and airborne contaminants



Non-Booted version also available



Strain and bend relief provides improved plug-to-cable retention and maximum performance by preventing pair deformation, as caused by mechanical strain

COMPLIANCE

- ISO/IEC 11801 Ed. 2.2
- IEC 60603-7
- ANSI/TIA-568-C.2
- TIA-1096-A
- IEEE 802.3af (PoE)
- IEEE 802.3at (PoE+)
- ANSI/TIA-968-B
- UL CMR and CSA FT4
- UL CM
- LSOH: IEC 60332-1, IEC 60754, and IEC61034

Product Information

PERFORMANCE SPECIFICATIONS*

| ELECTRICAL | |
|--|------------------------------------|
| Contact Resistance | 20 mΩ |
| Input to Output DC Resistance | 200 mΩ |
| Min. Dielectric Withstand Voltage (contact to contact) | 1000 V DC or AC peak |
| Insulation Resistance | 500 mΩ |
| Current Rating @ 25° C | 1.5 A |
| Power over Ethernet | Suitable for all PoE applications |
| MECHANICAL — GENERAL | |
| Operating Temperature | -10 to 60 °C, (14 to 140 °F) |
| Flammability Rating | UL 94 - V0 |
| Contact Materials | copper alloy |
| Plastic Materials | Flame retardant thermoplastic |
| Marking | P/N, length, performance level, QC |

| MECHANICAL — PLUG | |
|---------------------------------|--|
| Number of Plug Insertion Cycles | 750 |
| Min. Plug Retention Force | 50N (11.2 lbf) |
| Plug Compatibility | Compatible with RJ45 outlets |
| MECHANICAL — CABLE | |
| Wire Size (Nominal) | 24 AWG solid |
| Construction | UTP |
| Cable O.D. (Nominal) | 0.19 in. (4.8mm) |
| Wiring | T568A/B as specified by part # |
| Jacket Type | LS0H-1 CM Riser as specified by part # |
| Bend Radius | 1.0 in. (25mm) |

*Refer to Siemon Cable spec sheets for additional performance, electrical and mechanical information.



IC 5e Solid UTP Modular Cords

Siemon's IC5e solid conductor modular cords are available as single-ended or double-ended T568A or T568B assemblies. Siemon's solid, single-ended IC5e cable assemblies are designed for patching between the consolidation point and the back of the work area outlet or as equipment cords in cross-connect applications. These assemblies are constructed using cable that exceeds all Category 5e specifications.

Ordering Information:

NON-BOOT IC5-8(X)-(XX)M(X)(X) Category 5e IC, UTP solid cord,

| Wiring | Length | Termination Type | Jacket Material |
|------------------------|--|--|--|
| A = T568B T = T568A | 03 = 3m (9.8 ft.) 05 = 5m (16.4 ft.) 10 = 10m (32.8 ft.) 15 = 15m (49.2 ft.) 20 = 20m (65.6 ft.) | Blank = Single-Ended (RJ45 on one end) D = Double-Ended (RJ45 on both ends) | L = LS0H, Violet Jacket M = CM, Grey Jacket R = Riser, Blue Jacket |

BOOT IC5-8(X)-(XX)M-B(XX)(X)(X) Category 5e IC, UTP solid cord, coloured boot

| Wiring | Length | Termination Type | Jacket Material | Boot Colour |
|------------------------|--|--|--|---|
| A = T568B T = T568A | 03 = 3m (9.8 ft.) 05 = 5m (16.4 ft.) 10 = 10m (32.8 ft.) 15 = 15m (49.2 ft.) 20 = 20m (65.6 ft.) | Blank = Single-Ended (RJ45 on one end) D = Double-Ended (RJ45 on both ends) | L = LS0H, Violet Jacket M = CM, Grey Jacket R = Riser, Blue Jacket | 01 = Black 02 = White 03 = Red 04 = Grey 05 = Yellow 06 = Blue 07 = Green |

Because we continuously improve our products, Siemon reserves the right to change specifications and availability without prior notice.

Worldwide Headquarters
North America
 Watertown, CT USA
 Phone (1) 860 945 4200

Regional Headquarters
Europe Africa
 Chertsey, Surrey, England
 Phone (44) 0 1932 571771

Regional Headquarters
China
 Shanghai, P.R. China
 Phone (86) 215385 0303

Regional Headquarters
Latin America
 Bogota, Colombia
 Phone (571) 657 1950/51/52

Regional Headquarters
India Middle East
 Dubai, United Arab Emirates
 Phone (971) 4 3689743

Regional Headquarters
Asia Pacific
 Sydney, Australia
 Phone (86) 21 5385 0303

Siemon Interconnect Solutions
Watertown, CT USA
 Phone (1) 860 945 4213 US
 www.siemon.com/SIS

