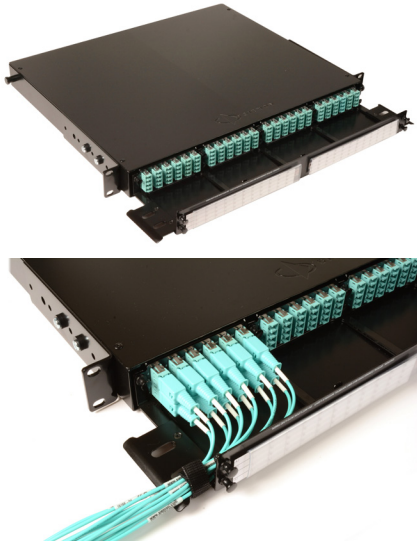


High Density 1U Fiber Connect Panel System

Regional Availability - Global

High-Density FCP3 Fiber Connect Panel

Economically connect, protect and manage up to 96 fibers within 1 rack mount unit. Designed to integrate with high density FCP3 fiber Plug and Play modules.



High Density

Supports up to 96 fibers in just 1U.

Enhanced Accessibility

Fiber drawer slides to the front and tilts down 30 degrees for maximum access to fiber connections.

Bend Radius Management

Recessed modules provide a high-capacity jumper management zone that helps maintain proper fiber bend radius.

Part #	Description
FCP3-DWR-4A	High-density FCP3 fiber enclosure, tilt, black, 1U

High Density FCP3 Connect Panel Plug and Play Modules and Adapter Plates

Siemon LC to MTP® FCP3 Plug and Play modules and LC adapter plates are designed for simple, snap-in deployment within the high density FCP3 Fiber Connect Panel. Providing up to 24 LC fibers per module, the factory terminated and tested modules are available in OM3 and OM4 multimode and singlemode configurations. The LC adapter plates provide a simple way to integrate traditional LC to LC connectivity within the high density FCP3 enclosure.

High Density

Modules provide up to 24 LC fibers per module, supporting up to 96 ports within the 1U FCP3 Fiber Connect Panel.

100% Fiber Utilisation and Future Application Support

Base 8 modules feature three 8-fiber MTPs for use with 8-fiber assemblies used in 40 and 100 Gig applications and beyond, eliminating the need for conversion cords.

Fast Deployment

Snap-in mounting and multi-fiber MTP connectivity offers ultra-fast deployment of high-performance fiber channels.

Easy Identification

Modules are colour coded black for Base 12 and grey for Base 8 to easily distinguish between the two systems.

Compact Housing

Reduces mounting depth for greater cable management space within enclosures.

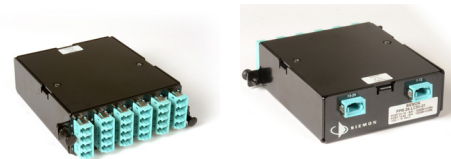
Optimised Adapter Spacing

Enables easy finger access to fiber jumper connector latches in high density patching environments.

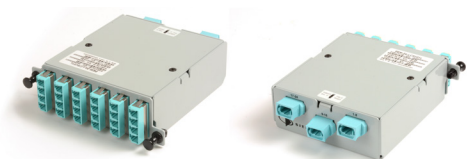
Multimode and Singlemode Modules

Utilises zirconia ceramic sleeves for optimum performance.

Base 12 Modules



Base 8 Modules



Adapter Plates



Product Information

Performance Specifications (Standard)

Fiber Type	MAX Insertion (dB)		Min. Return Loss (dB)		Performance Class
	MTP	LC	MTP	LC	
5L-MM 50/125 10G (OM3)	0.40	0.25	20	30	XGLO® 300
5V-MM 50/125 10G (OM4)	0.40	0.25	20	30	XGLO® 550
SM-LWP SM (OS1/OS2)	0.60	0.40	60	55	XGLO®

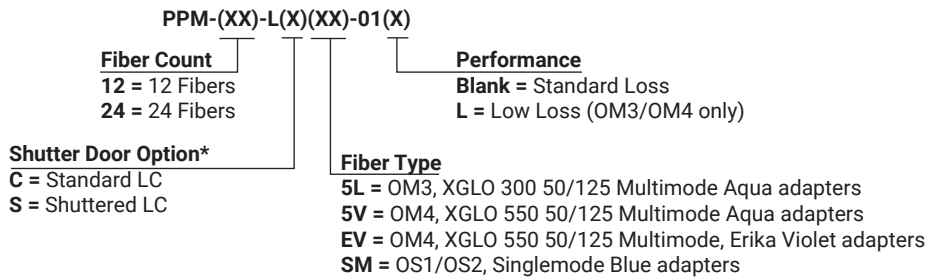
Performance Specifications (Low Loss)

Fiber Type	MAX Insertion (dB)		Min. Return Loss (dB)		Performance Class
	MTP	LC	MTP	LC	
5L-MM 50/125 10G (OM3)	0.20	0.15	20	30	XGLO® 300
5V-MM 50/125 10G (OM4)	0.20	0.15	20	30	XGLO® 550

Ordering Information

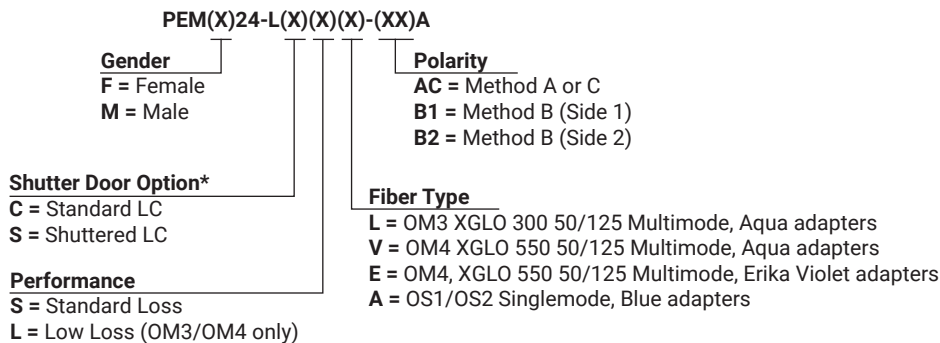
Base 12 Modules

Base 12 HD FCP3 LC to MTP modules, black module



Base 8 Modules

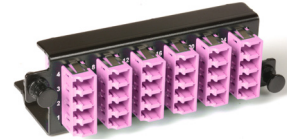
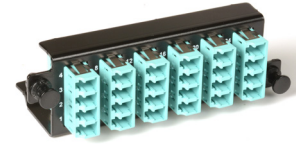
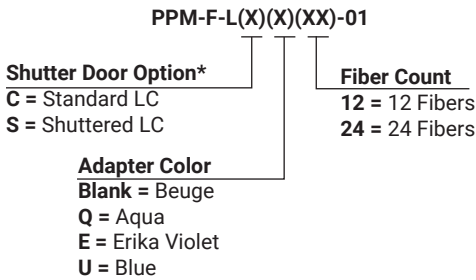
24 Fiber base 8 HD FCP3 LC to MTP modules, grey module.



Ordering Information

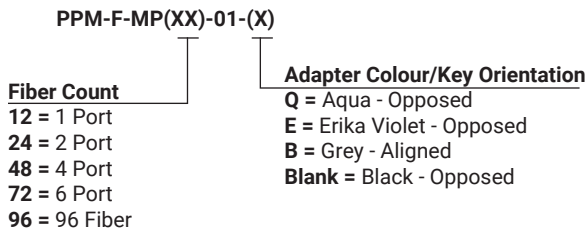
LC Adapter Plates

High-density FCP3 LC adapter plates, black



MTP Adapter Plates

High-density FCP3 MTP adapter plates, black



Blank Adapter Plates

Part #	Description
PPM-BLNK	Blank adapter plate, black



* Optional Shuttered LC adapters feature a small plastic shutter door that opens upon insertion without touching the connector endface and springs back into the closed position upon removal to ensure protection of empty ports.

Because we continuously improve our products, Siemon reserves the right to change specifications and availability without prior notice.

North America P: (1) 860 945 4200	Asia Pacific P: (61) 2 8977 7500	Latin America P: (571) 657 1950/51/52	Europe P: (44) 0 1932 571771	China P: (86) 215385 0303	India, Middle East & Africa P: (971) 4 3689743
---	--	---	--	-------------------------------------	--

Siemon Interconnect Solutions
P: (1) 860 945 4213
www.siemon.com/SIS