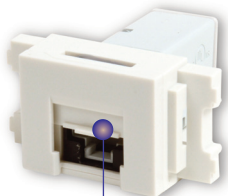
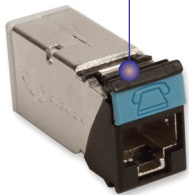


# Flat Z-MAX® Outlets and Kitted Surface Mount Boxes – Japan

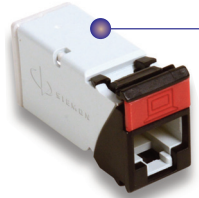
Flat Z-MAX Outlets are specifically designed to mount into all Siemon MAX® openings in faceplates, adapters, patch panels and surface mount boxes, including the 1-port Japanese JIS faceplate adapter with shutter door. Available in Category 6 UTP, and in Category 6A shielded and UTP, Flat Z-MAX Outlets are designed to achieve exceptional performance and terminate in as little as 60 seconds using the zero-cross termination module and Z-MAX termination tool. These outlets are also available kitted with Siemon’s popular surface mount boxes that are available in 1, 2, 4 and 6 port configurations and feature a protective spring-loaded shutter door. Also available is Siemon’s Flat Z-MAX 45 Category 6A shielded outlet that offers a shorter, compact design and the ability to terminate cable at a 45-degree exit.

**High-Visibility Icon System** — Provide designation for voice / data applications and color coding



**Protective Shutter Doors** —

Z-MAX Flat Outlets can be installed in Japanese JIS adapters and surface mount boxes that feature shutter doors for added protection from dust and other contaminants

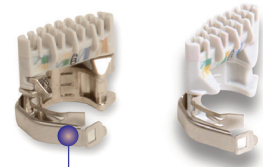


**Various Performance Levels** — Z-MAX Flat Outlets are available in Category 6 UTP, and Category 6A UTP and shielded to meet a wide range of applications from 10BASE-T to 10GBASE-T

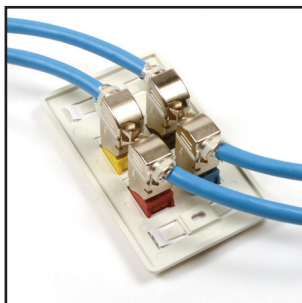


**Kitted Surface Mount Boxes** — Z-MAX Flat Outlets are available kitted with 1, 2, 4 and 6-port surface mount boxes that feature a snap-on cover with designation areas for color-coded icons

**Fast Repeatable Terminations** — Lacing modules guides correct conductor placement and offers best-in-class termination time while eliminating pair crossing for superior, repeatable performance



**Rapid Shield Connection** — Integrated hinged metal clip accommodates multiple cable diameters and automatically terminates shield



**Compact and Side Stackable** — Flat Z-MAX 45 Outlets allow cable to exit at a 45-degree angle for shallow boxes and side stacking in high-density applications. Not recommended for use with surface mount boxes.



**Versatile** — Flat Z-MAX Outlets and Flat Z-MAX 45 Outlets fit into all Siemon MAX faceplates and adapters available in a wide range of sizes and orientations



Data | Power | Reach | Delivered

## Ordering Information:

### Flat Z-MAX Category 5E Shielded outlets

Part #	Description
Z5-SF(XX)	Flat Z-MAX Shielded Category 5E, T568A/B

### Flat Z-MAX Category 6 UTP Outlets

Part #	Description
Z6-F(XX)	Flat Z-MAX UTP Category 6, T568A/B

### Flat Z-MAX Category 6A UTP Outlets

Part #	Description
Z6A-F(XX)	Flat Z-MAX UTP Category 6A, T568A/B

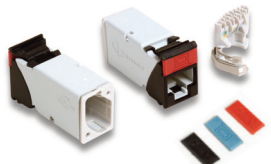
### Flat Z-MAX Category 6A Shielded Outlets

Part #	Description
Z6A-SF(XX)	Flat Z-MAX Shielded Category 6A, T568A/B

### Flat Z-MAX 45 Category 6A Shielded Outlets

Part #	Description
Z6A-45-SF(XX)	Flat Z-MAX 45 Shielded Category 6A, T568A/B

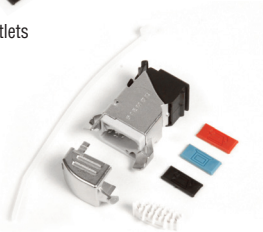
Use (XX) to specify color. 01 = Black, 02 = White,  
Add "B" to the end of part number for bulk project pack of 100



Flat Z-MAX UTP Outlets



Flat Z-MAX Shielded Outlets



Flat Z-MAX 45 Shielded Outlets

Note: All flat Z-MAX outlets include one color-matching, one red and one blue icon.

### Termination Tools

Part #	Description
Z-TOOL-45	Z-MAX 45 Termination Tool
Z-TOOL	Z-MAX Termination Tool

Note: Z-MAX outlets utilize the Z-TOOL and Z-MAX 45 Outlets utilize the Z-TOOL-45.  
Tools are included with quantities of 50 or more outlets or with any bulk (B) order

## OUTLET SPECIFICATIONS

ELECTRICAL	
Contact Resistance	20 mΩ
Input to Output Resistance	200 mΩ
Min. Dielectric Withstand Voltage (contact to contact)	1000 AC peak
Min. Dielectric Withstand Voltage	1500 V DC (shield)
Insulation Resistance	500 mΩ
Current Rating	1.5A
Compliance	ANSI/TIA-568.2-E, ISO/IEC 11801, IEC-61156, IEC 60603-7, IEC 60512-99-002 (3rd party verified)
PoE	PoE Types 1, 2, 3 and 4

MECHANICAL - GENERAL	
Operating Temperature	-10 to 75°C (14 to 167°F)
Flammability Rating	UL 94 V-0
Green Features	RoHS, lead-free, halogen-free, PVC free
Housing Material (Shielded)	Zinc die cast
Housing Material (UTP)	Glass-reinforced nylon
Contact Materials	Copper alloy, plated with 50 micro inches (1.27 micron) minimum thick gold or equivalent at contact interface
Plastic Materials	Flame retardant thermoplastic
Shield	Shield 360 degree enclosure
Cable OD (max)	9mm (0.354 in.)
Reterminations	5
Wiring	T568A/B
MECHANICAL - JACK	
Number of Plug Insertion Cycles	2500
Min. Plug Retention Force	50N (11.24 lbf)
Plug Compatibility	Compatible with RJ45 (8-position) or RJ11 (6-position) plugs



Z-TOOL



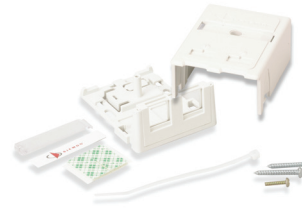
Z-TOOL-45

# Surface Mount Boxes

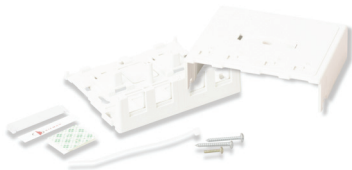
Surface Mount Box kits come with 1, 2, 4 or 6 Flat Z-MAX Outlets that can be quickly installed into the base. Multiple cable management features provide a high performance and well organized installation.



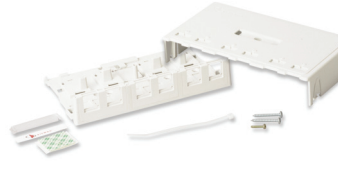
**MX-SM1-02-(X)DM** . . . . .  
 1-port Surface Mount Box, white, with spring shutter door, magnet, cover, base, one (1) Flat Z-MAX outlets and lacing cap, cable ties, adhesive tape and mounting screws



**MX-SM2-02-(X)DM** . . . . .  
 2-port Surface Mount Box, white, with spring shutter door, magnet, cover, base, two (2) Flat Z-MAX outlets and lacing cap, cable ties, adhesive tape, mounting screws and designation labels



**MX-SM4-02-(X)DM** . . . . .  
 4-port Surface Mount Box, white, with spring shutter door, magnet, cover, base, four (4) Flat Z-MAX outlets and lacing cap, cable ties, adhesive tape, mounting screws, designation labels and label covers

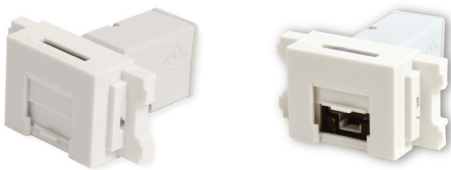


**MX-SM6-02-(X)DM** . . . . .  
 6-port Surface Mount Box, white, with spring shutter door, magnet, cover, base, six (6) Flat Z-MAX outlets and lacing cap, cable ties, adhesive tape, mounting screws, designation labels and label covers

Use (X) to specify outlet type: A = Flat Z-MAX Category 6 UTP, B = Flat Z-MAX Category 6A UTP, C = Flat Z-MAX Category 6A Shielded

# Japanese JIS Adapter

Flat Z-MAX outlets can be used with the Japanese JIS Adapters that provide a secure mounting solution with protective shutter door.



## Termination Tools

Part #	Description
MX-JIS-B-02-D	1-port Japanese faceplate adapter for Flat Z-MAX outlets with door, white



SCAN TO DOWNLOAD SPEC SHEET

Because we continuously improve our products, Siemon reserves the right to change specifications and availability without prior notice.

**North America**  
 P: (1) 860 945 4200

**Mexico**  
 P: (521) 556 387 7708/09/10

**Latin America**  
 P: (571) 657 1950/51/52

**Europe**  
 P: (44) 0 1932 571771

**Asia Pacific**  
 P: (61) 2 8977 7500

**Siemon OEM Technologies**  
 P: (1) 860 945 4213  
[www.siemon.com/OEM](http://www.siemon.com/OEM)

**China**  
 P: (86) 215385 0303

**India, Middle East & Africa**  
 P: (971) 4 3689743

