

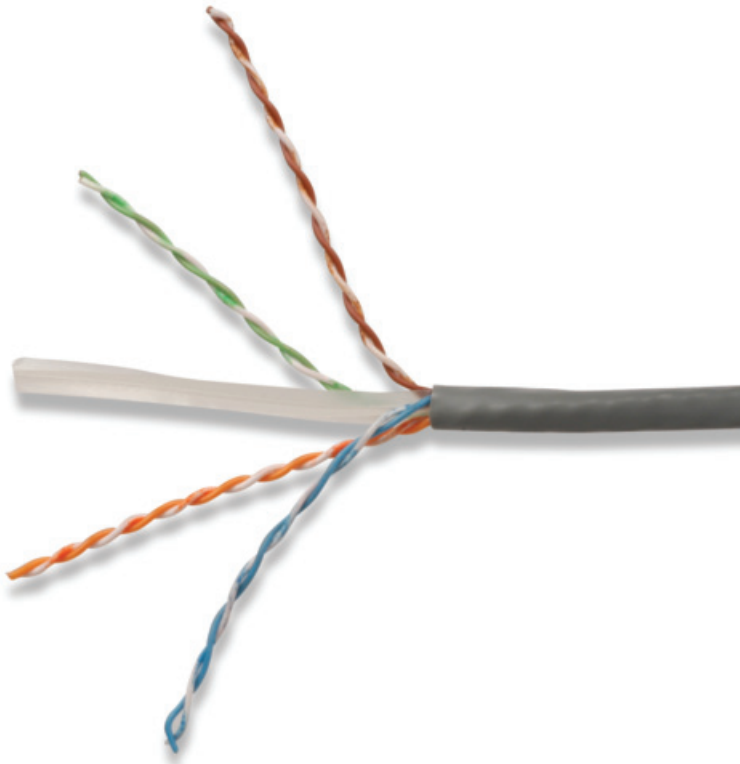


SYSTEM 6™ UTP CABLE- INDIA

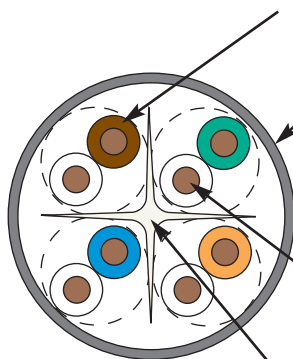
System 6 cable provides significant headroom above all TIA/EIA and ISO/IEC category 6/class E transmission performance specifications. Combine our high performance category 6 connectivity with System 6 cable and the result is a system with superior electrical performance for optimum applications support.



CABLE — INDIA



Insulation:
High Density, Polyethylene
1.05mm Max O.D.



Jacket:
Nominal Cable O.D.
• 6.3mm ± 0.3 (0.24 in. ± 0.01)

Conductor:
0.57mm (0.022 in.)
(23 AWG) solid bare copper

Cross Separator
• Maintains pair geometry before during and after installation for optimal NEXT performance

Highlights

- UTP
- Round jacket
- Center isolation member
- Reverse sequential length markings
- Supports any application designed for Category 6 or lower rated system
- Reel-In-Box packaging

Standards Compliance

- ISO/IEC 11801:2002 (Category 6)
- ANSI/TIA-568-C.2
- IEC 61156-5:2002 (Category 6)
- UL CM
- UL CMR and CSA FT4





PRODUCT INFORMATION

ELECTRICAL SPECIFICATIONS

| | |
|---------------------------------|---------------------|
| DC Resistance | < 7.32 ohms/100m |
| DC Resistance Unbalance | 5% |
| Mutual Capacitance | 5.6 nF/100m |
| Capacitance Unbalance | <330 pF/100m |
| Characteristic Impedance (ohms) | 100+/- 15 ohms |
| NVP | 69% |
| TCL | 30-10 log(f/100) dB |
| Delay Skew | ≤45ns |

PHYSICAL PROPERTIES

| | |
|--------------------------|---------------|
| | CM/CMR |
| Pulling Tension (max) | 100N |
| Bend Radius (min) | 24mm (1.0 in) |
| Installation Temperature | 0 to 50 Deg |
| Storage Temperature | -20 to 60 Deg |
| Operating Temperature | -10 to 60 Deg |

TRANSMISSION PERFORMANCE



GUARANTEED WORSE CASE



SIEMON TYPICAL

| Frequency (MHz) | Insertion Loss (dB) | | NEXT (dB) | | PSNEXT (dB) | | ACR (dB) | | PSACR (dB) | | ACR-F (dB) | | PSACR-F (dB) | | Return Loss (dB) | | Propagation Delay (ns) | |
|-----------------|---------------------|------|-----------|------|-------------|------|----------|------|------------|------|------------|------|--------------|------|------------------|------|------------------------|-----|
| 1 | 2.0 | 1.4 | 77.3 | 99.3 | 75.3 | 91.2 | 75.3 | 97.9 | 73.3 | 89.8 | 70.8 | 91.2 | 68.8 | 81.8 | 21.0 | 33.7 | 550 | 512 |
| 4 | 3.7 | 3.3 | 68.3 | 90.3 | 66.3 | 81.0 | 64.5 | 87.0 | 62.5 | 77.6 | 58.8 | 78.6 | 56.8 | 69.7 | 24.0 | 32.5 | 532 | 507 |
| 10 | 5.9 | 5.5 | 62.3 | 80.8 | 60.3 | 74.5 | 56.4 | 75.3 | 54.4 | 68.9 | 50.8 | 69.8 | 48.8 | 61.9 | 26.0 | 36.6 | 525 | 503 |
| 16 | 7.5 | 7.1 | 59.2 | 78.1 | 57.2 | 70.9 | 51.8 | 71.0 | 49.8 | 63.8 | 46.7 | 65.0 | 44.7 | 57.8 | 26.0 | 37.7 | 523 | 501 |
| 20 | 8.4 | 8.0 | 57.8 | 77.5 | 55.8 | 69.8 | 49.4 | 69.6 | 47.4 | 61.8 | 44.8 | 62.7 | 42.8 | 55.8 | 26.0 | 35.2 | 522 | 501 |
| 31.25 | 10.6 | 10.1 | 54.9 | 74.5 | 52.9 | 67.1 | 44.3 | 64.5 | 42.3 | 57.1 | 40.9 | 58.5 | 38.9 | 51.7 | 24.6 | 36.6 | 520 | 500 |
| 62.5 | 15.2 | 14.4 | 50.4 | 69.4 | 48.4 | 61.6 | 35.1 | 55.1 | 33.1 | 47.3 | 34.9 | 54.6 | 32.9 | 46.0 | 22.5 | 41.1 | 519 | 499 |
| 100 | 19.6 | 18.4 | 47.3 | 66.7 | 45.3 | 59.8 | 27.7 | 48.3 | 25.7 | 41.4 | 30.8 | 49.8 | 28.8 | 41.3 | 21.1 | 38.1 | 518 | 499 |
| 160 | 25.4 | 23.5 | 44.2 | 62.6 | 42.2 | 55.9 | 18.9 | 39.1 | 16.9 | 32.4 | 26.7 | 44.6 | 24.7 | 34.8 | 19.7 | 37.0 | 517 | 498 |
| 200 | 28.7 | 26.4 | 42.8 | 61.4 | 40.8 | 52.9 | 14.1 | 35.0 | 12.1 | 26.5 | 24.8 | 43.0 | 22.8 | 33.4 | 19.0 | 36.4 | 517 | 498 |
| 250 | 32.6 | 30.1 | 41.3 | 63.3 | 39.3 | 54.3 | 8.8 | 33.2 | 6.8 | 24.2 | 22.8 | 41.0 | 20.8 | 33.5 | 18.3 | 33.6 | 516 | 498 |
| 300 | - | 33.5 | - | 60.3 | - | 51.4 | - | 26.8 | - | 17.9 | - | 37.8 | - | 30.6 | - | 35.7 | - | 498 |
| 400 | - | 39.1 | - | 57.8 | - | 48.3 | - | 18.7 | - | 9.2 | - | 39.9 | - | 29.4 | - | 33.9 | - | 498 |
| 500 | - | 44.0 | - | 54.2 | - | 46.4 | - | 10.2 | - | 2.4 | - | 37.4 | - | 25.6 | - | 29.2 | - | 498 |
| 550 | - | 46.7 | - | 56.2 | - | 47.4 | - | 9.6 | - | 0.7 | - | 31.1 | - | 24.1 | - | 27.4 | - | 498 |

All performance based on 100 meters (328 ft.).

System 6® UTP 4-Pair Solid Cable:

9C6M4-E3-04-R1H.....PVC (CM), Gray Jacket, 305m (1000 ft) Reel-in-Box

9C6R4-E3-06-R1H.....PVC (CMR, CSA FT4, Riser), Blue Jacket, 305m (1000 ft) Reel-in-Box

Other cable lengths also available: Add "-R2H" for 500m (1640 ft.) Reel, "-R4H" for 1000m (3,281 ft.) Reel

Because we continuously improve our products, Siemon reserves the right to change specifications and availability without prior notice.

Worldwide Headquarters North America

Watertown, CT USA
Phone (1) 860 945 4200 US
Phone (1) 888 425 6165

Regional Headquarters EMEA

Europe/Middle East/Africa
Surrey, England
Phone (44) 0 1932 571771

Regional Headquarters Asia/Pacific

Shanghai, P.R. China
Phone (86) 21 5385 0303

Regional Headquarters Latin America

Bogota, Colombia
Phone (571) 657 1950

