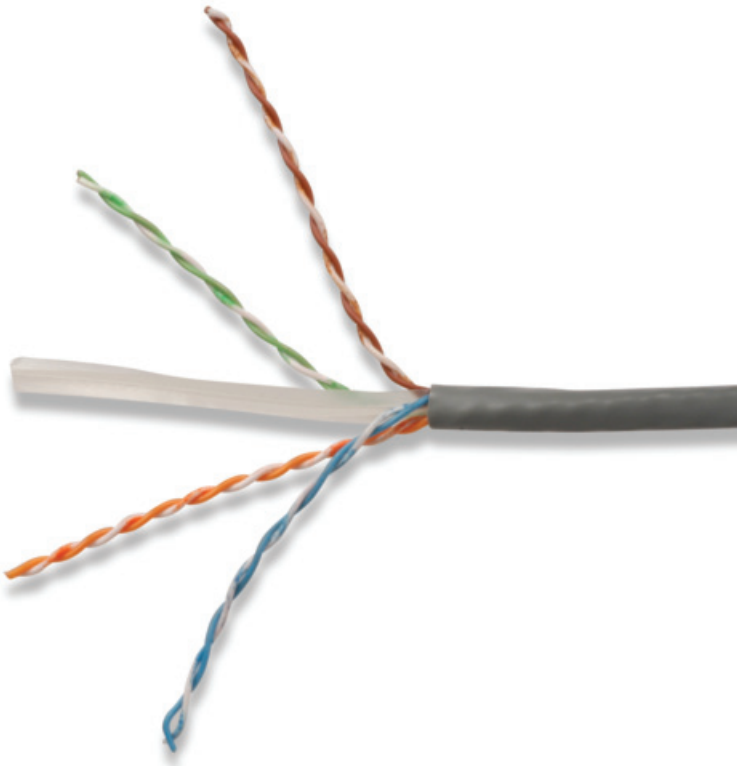
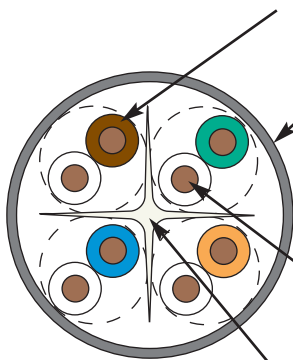


SOLUTION 6™ UTP CABLE- INDIA

Solution 6 cable meets all ANSI/TIA and ISO/IEC category 6/class E transmission performance specifications. Combine our high performance category 6 connectivity with Solution 6 cable and the result is a system designed for optimum applications support.



Insulation:
High Density, Polyethylene
1.00mm Max O.D.



Jacket:
Nominal Cable O.D.
• 6.0mm ± 0.3 (0.24 in. ± 0.01)

Conductor:
0.55mm (0.022 in.)
(23 AWG) solid bare copper

Cross Separator
• Maintains pair geometry before during and after installation for optimal NEXT performance

Highlights

- UTP
- Round jacket
- Center isolation member
- Reverse sequential length markings
- Supports any application designed for Category 6 or lower rated system
- Reel-In-Box packaging

Standards Compliance

- ISO/IEC 11801:2002 (Category 6)
- ANSI/TIA-568-C.2
- IEC 61156-5:2002 (Category 6)
- UL CM
- UL CMR and CSA FT4

PRODUCT INFORMATION

ELECTRICAL SPECIFICATIONS

DC Resistance	< 7.32 ohms/100m
DC Resistance Unbalance	5%
Mutual Capacitance	5.6 nF/100m
Capacitance Unbalance	<330 pF/100m
Characteristic Impedance (ohms)	100+/- 15 ohms
NVP	69%
TCL	30-10 log(f/100) dB
Delay Skew	≤45ns

PHYSICAL PROPERTIES

	CM/CMR
Pulling Tension (max)	100N
Bend Radius (min)	24mm (1.0 in)
Installation Temperature	0 to 50 Deg
Storage Temperature	-20 to 60 Deg
Operating Temperature	-10 to 60 Deg

TRANSMISSION PERFORMANCE



GUARANTEED WORSE CASE



SIEMON TYPICAL

Frequency (MHz)	Insertion Loss (dB)		NEXT (dB)		PSNEXT (dB)		ACR (dB)		PSACR (dB)		ACR-F (dB)		PSACR-F (dB)		Return Loss (dB)		Propagation Delay (ns)	
	2.1	1.7	75.3	96.7	72.3	89.4	73.2	95.0	70.2	87.7	68.0	97.2	65.0	87.9	20.0	28.1	570	508
1	2.1	1.7	75.3	96.7	72.3	89.4	73.2	95.0	70.2	87.7	68.0	97.2	65.0	87.9	20.0	28.1	570	508
4	3.8	3.6	66.3	88.4	63.3	76.5	62.4	84.8	59.4	72.9	56.0	84.0	53.0	75.1	23.0	32.8	552	504
10	6.0	5.7	60.3	82.3	57.3	72.1	54.3	76.6	51.3	66.4	48.0	73.7	45.0	65.5	25.0	36.5	545	499
16	7.6	7.3	57.2	76.9	54.2	68.9	49.6	69.7	46.6	61.6	43.9	69.5	40.9	62.0	25.0	37.8	543	498
20	8.5	8.2	55.8	76.8	52.8	69.7	47.3	68.7	44.3	61.5	42.0	67.9	39.0	61.0	25.0	37.6	542	497
31.25	10.7	10.3	52.9	74.6	49.9	65.1	42.1	64.2	39.1	54.7	38.1	61.4	35.1	55.1	23.6	38.2	540	497
62.5	15.5	14.9	48.4	69.3	45.4	61.4	32.9	54.5	29.9	46.6	32.1	53.3	29.1	47.1	21.5	37.9	539	496
100	19.9	19.2	45.3	67.3	42.3	60.7	25.4	48.1	22.4	41.4	28.0	51.6	25.0	44.1	20.1	40.3	538	495
160	25.7	24.8	42.2	66.2	39.2	57.0	16.5	41.4	13.5	32.2	23.9	46.5	20.9	39.3	18.7	37.6	537	495
200	29.1	27.9	40.8	60.7	37.8	52.3	11.6	32.8	8.6	24.4	22.0	45.9	19.0	39.5	18.0	36.3	537	494
250	33.0	32.6	39.3	62.2	36.3	53.3	6.3	29.6	3.3	20.7	20.0	41.7	17.0	34.6	17.3	35.1	536	494
300*		36.1		64.0		52.5		27.9		16.4		37.9		30.8		38.8		
400*		42.5		56.8		49.0		14.3		6.5		34.6		27.4		38.4		
500*		48.1		56.9		49.1		8.8		1.0		39.5		31.7		33.3		
550*		50.9		56.1		44.7		5.2		-6.2		37.6		30.4		34.6		

Solution 6® UTP 4-Pair Solid Cable:

9C6M4-E2-04-R1H.....PVC (CM), Gray Jacket, 305m (1000 ft) Reel-in-Box

9C6R4-E2-06-R1H.....PVC (CMR, CSA FT4, Riser), Blue Jacket, 305m (1000 ft) Reel-in-Box

Other cable lengths also available: Add "-R2H" for 500m (1640 ft.) Reel, "-R4H" for 1000m (3,281 ft.) Reel

Because we continuously improve our products, Siemon reserves the right to change specifications and availability without prior notice.

Worldwide Headquarters North America

Watertown, CT USA
Phone (1) 860 945 4200 US
Phone (1) 888 425 6165

Regional Headquarters EMEA

Europe/Middle East/Africa
Surrey, England
Phone (44) 0 1932 571771

Regional Headquarters Asia/Pacific

Shanghai, P.R. China
Phone (86) 21 5385 0303

Regional Headquarters Latin America

Bogota, Colombia
Phone (571) 657 1950