

# Bundled Fiber Trunks

The Fast, Flexible, and Reliable Solution for Your Network

Regional Availability – Global



Siemon's Bundled Fiber Trunks offer a streamlined and efficient solution for your fiber optic network needs. By bundling high-performance fiber cables together, we've optimized pathway fill and reduced installation time. With up to a 50% faster deployment rate, Siemon's Bundled Fiber Trunks provide a cost-effective and reliable option for your project.

Designed to perform like single-jacket fiber, our bundled solution ensures exceptional performance and durability. Whether you need assemblies, patch cords, or other fiber components, Siemon offers a comprehensive range of options to meet your specific requirements. With shorter lead times, you can get your project up and running quickly and efficiently.

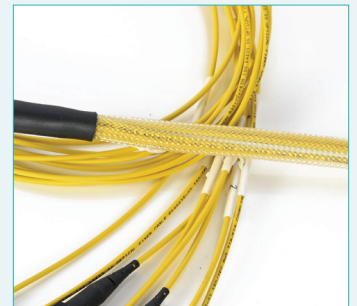


## Pulling Eye

The new pulling eye makes it a breeze to install and remove network cables. It's designed to handle pulling tensions of up to 100 pounds, ensuring a smooth and efficient cable installation.

## Key Benefits of Siemon's Bundled Fiber Trunks:

- **Speed:** Faster installation times
- **Flexibility:** Customizable to meet your specific fiber count needs
- **Reliability:** Performance is equivalent to single-jacket fiber
- **Customer Focus:** Tailored solutions to fit your project requirements



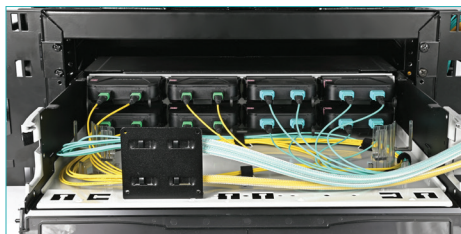
## Bundling Technology

Siemon's mesh material technology allows us to quickly build high-density fiber trunks from single-jacket 8- and 12-fiber cables. This means you'll get your fiber trunks faster than with traditional high-strand count single-jacket options.



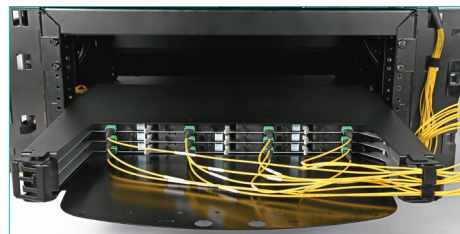
## State-of-the-Art Mesh Lining

Siemon's bundled fiber trunks feature a durable, anti-sag mesh lining made from plenum and LSOH materials, ensuring optimal performance and compliance in various environments.



## Bundled Fiber Trunks with High Density

Both singlemode and multimode bundled trunks can be simultaneously installed in a LightVerse® enclosure using the tie down plate.



## Bundled Fiber Trunks with Ultra-High Density

Bundled trunks are a great solution for use with LightStack®, Siemon's Ultra-High Density platform.

## Standards Compliance

- ISO/IEC 11801
- ANSI/TIA-568.3
- ANSI/TIA-598
- ANSI/TIA-492 CAAB
- Telcordia GR-20-CORE
- ITU-T G.652 C/D
- ITU-T G.657

# Product Information

## BASE-8 and BASE-12 Bundled Fiber Trunk Assemblies

### Cable – Optical and Physical Specifications

	MULTIMODE	SINGLEMODE
<b>CABLE TYPE</b>	XGLO OM4 (850/1300nm)	XGLO (1310/1383/1550nm)
<b>FIBER CABLE ATTENUATION, MAX (dB/km)</b>	3.0/1.0	0.4/0.4/0.3*
<b>LED BANDWIDTH, MIN (MHz/km)</b>	3500/500	N/A
<b>EFFECTIVE MODAL BANDWIDTH, MIN (MHz/km)</b>	4700	N/A
<b>CABLE OUTER JACKET, COLOR (PER TIA-598-D)</b>	Aqua	Yellow

\*XGLO Singlemode fiber meets low water peak specifications per ITU-T G.652.C.

### Connector – Physical Specifications

CONNECTOR TYPE	IEC Intermateability Compliance	TIA/EIA Intermateability Compliance	HOUSING COLOR			BOOT COLOR	
			SM (Standard-Loss) /MM-APC	SM (Ultra-Low-Loss)	MM-5L/5V	SM	MM
8-FIBER	IEC 61754-7	TIA/EIA-604-5	Green	Yellow	Aqua	Blue	Blue
12-FIBER	IEC 61754-7	TIA/EIA-604-5	Green	Yellow	Aqua	Black	Black

### Connector – Optical Specifications

FIBER TYPE	Performance Class	MAX INSERTION LOSS (DB)	MIN RETURN LOSS (DB)
		MTP	MTP
50/125µm MULTIMODE OM4	XGLO 550	0.35	25
SINGLEMODE OS2	XGLO	0.60	60
50/125µm MULTIMODE OM4	XGLO 550 Ultra-Low-Loss	0.20	25
SINGLEMODE OS2	XGLO Ultra-Low-Loss	0.30	65
50/125µm MULTIMODE APC OM4	XGLO 550 Ultra-Low-Loss	0.30	35
SINGLEMODE OS2 G657.A2	XGLO Ultra-Low-Loss	0.30	65

## BASE-8 Bundled Fiber Trunk Assembly

### Cable & Pulling Eye Assembly

FIBER STRAND COUNT	Cable Diameter mm (in.)	*Required Duct Diameter mm (in.)	Max Pull Force N/lbf
32	5.65mm (0.22in.)	35mm (1.38in.)	445N/100lbf
48	6.85mm (0.27in.)	35mm (1.38in.)	445N/100lbf
64	9.1mm (0.36in.)	35mm (1.38in.)	445N/100lbf
72	9.15mm (0.36in.)	35mm (1.38in.)	445N/100lbf
96	9.35mm (0.37in.)	35mm (1.38in.)	445N/100lbf
128	9.75mm (0.38in.)	35mm (1.38in.)	445N/100lbf
144	10.45mm (0.41in.)	35mm (1.38in.)	445N/100lbf

\*Pulling eye assembly shall be capable of passing through these minimum duct diameter requirements during product installation.

## BASE-12 Bundled Fiber Trunk Assembly

### Cable & Pulling Eye Assembly

FIBER STRAND COUNT	Cable Diameter mm (in.)	*Required Duct Diameter mm (in.)	Max Pull Force N/lbf
48	5.25mm (0.20in.)	35mm (1.38in.)	445N/100lbf
72	5.65mm (0.22in.)	35mm (1.38in.)	445N/100lbf
96	6.85mm (0.27in.)	35mm (1.38in.)	445N/100lbf
144	9.1mm (0.36in.)	35mm (1.38in.)	445N/100lbf
192	9.35mm (0.37in.)	35mm (1.38in.)	445N/100lbf

\*Pulling eye assembly shall be capable of passing through these minimum duct diameter requirements during product installation.

# Ordering Information

## BASE-8 Bundled Fiber Trunk Assembly

B (XX) (X) (X) - (X) (X) (X) (X) (XXX) (X) (X)

FIBER COUNT	BASE	PERFORMANCE	FIBER TYPE	JACKET RATING	CONNECTOR TYPE (SIDE A)	CONNECTOR TYPE (SIDE B)	LENGTH***	LENGTH UNIT	POLARITY METHOD
32 = 32 48 = 48 64 = 64 72 = 72 96 = 96 C8 = 128 E4 = 144	E = BASE-8 2.0 mm	S = Standard Loss L = Ultra-Low-Loss	V = OM4, XGLO 550, Multimode, Aqua E = OM4, XGLO 550, Multimode, Erika Violet S = OS2, G657.A2, Singlemode, Yellow U = OM4, XGLO 550, Multimode, MTP/APC, Aqua* A = OS2, Singlemode, Yellow**	P = Plenum L = LS0H3C (also known as CPR Dca)	M = Pinned MTP F = Unpinned MTP	M = Pinned MTP F = Unpinned MTP	Length must be 3 digits. Example: 003 = 3 meters 010 = 10 meters	F = Feet M = Meters	A = Method A B = Method B C = Method C

\*Only available in ULL.

\*\*Available in Plenum jacket rating only.

\*\*\*Limited to 100m total fiber trunk length.

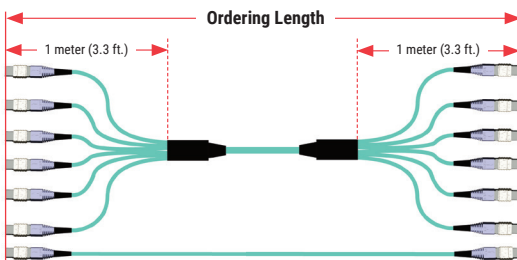
## BASE-12 Bundled Fiber Trunk Assembly

B (XX) (X) (X) - (X) (X) (X) (X) (XXX) (X) (X)

FIBER COUNT	BASE	PERFORMANCE	FIBER TYPE	JACKET RATING	CONNECTOR TYPE (SIDE A)	CONNECTOR TYPE (SIDE B)	LENGTH**	LENGTH UNIT	POLARITY METHOD
48 = 48 72 = 72 96 = 96 E4 = 144 J2 = 192	M = BASE-12 2.0 mm	S = Standard Loss L = Ultra-Low-Loss	V = OM4, XGLO 550, Multimode, Aqua E = OM4, XGLO 550, Multimode, Erika Violet S = OS2, G657.A2, Singlemode, Yellow*	P = Plenum L = LS0H3C (also known as CPR Dca)	M = Pinned MTP F = Unpinned MTP	M = Pinned MTP F = Unpinned MTP	Length must be 3 digits. Example: 003 = 3 meters 010 = 10 meters	F = Feet M = Meters	A = Method A B = Method B C = Method C

\*Only available in ULL.

\*\*Limited to 100m total fiber trunk length.



• Fiber Extenders ship with MTP Adapter for quick transition.

• Order length is measured connector tip to connector tip. Multi-leg versions offered with standard 1 meter (3.3 ft.) legs. Minimum order length is 1 meter (3 ft.) for 12 strand and 3 meters (9 ft.) for 24 strands or greater (See diagram on left).

• Only trunk lengths greater than 5 meters (16 ft.) come with a pulling eye.

• Tolerance is +0.2m/-0m for length less than 10m.

Siemon provides a range of high-performance fiber connectivity options. Unlock a universe of possibilities with the Siemon LightVerse® Fiber Optic Connectivity System.

View our LightVerse fiber optic modules offering [here](#).

View our LightVerse fiber optic adapter plates offering [here](#).

View our LightVerse fiber optic splicing offering [here](#).

View our range of pre-terminated MTP-MTP fiber optic trunks [here](#).

View our range of pre-terminated MTP-LC fiber optic trunks [here](#).

View our range of pre-terminated LC-LC fiber optic trunks [here](#).



SCAN TO DOWNLOAD SPEC SHEET

Because we continuously improve our products, Siemon reserves the right to change specifications and availability without prior notice.

**North America**  
P: (1) 860 945 4200

**Mexico**  
P: (521) 556 387 7708/09/10

**Latin America**  
P: (571) 657 1950/51/52

**Europe**  
P: (44) 0 1932 571771

**Asia Pacific**  
P: (61) 2 8977 7500

**Siemon OEM Technologies**  
P: (1) 860 945 4213  
[www.siemon.com/OEM](http://www.siemon.com/OEM)

**China**  
P: (86) 215385 0303

**India, Middle East & Africa**  
P: (971) 4 3689743