

Category 6A Shielded BladePatch® Modular Cords

Category 6A shielded BladePatch patch cord offers a unique Category 6A solution for high-density patching environments. It features an innovative push-pull boot design to control the latch, enabling easy access and removal of the cord in tight-fitting areas. The BladePatch cord is ideal for patching blade servers, patch panels, or any equipment with high density RJ-45 outlets.



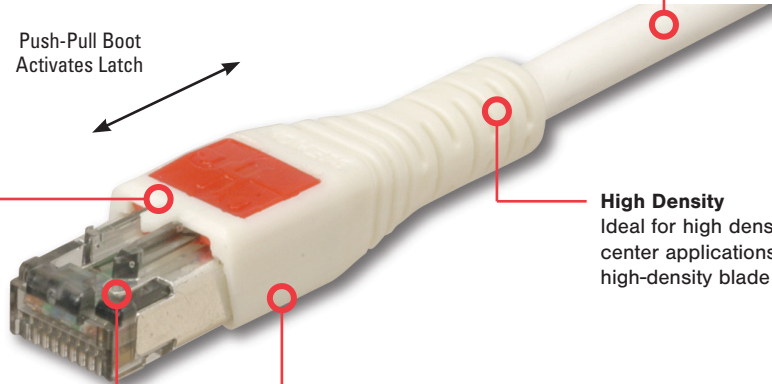
Snagless

Push-pull latch design eliminates external thumb latch used in standard modular plug designs which can snag and break

High Performance

Cords feature Category 7 S/FTP stranded cable for optimal transmission performance while eliminating alien crosstalk

Push-Pull Boot
Activates Latch



High Density

Ideal for high density data center applications and today's high-density blade servers

Low Profile Boot Design

Optimizes side-stackability of patch cords and allows use in even the most dense equipment

Easy Access and Removal

RJ-45 patch cord with patent-pending push-pull latch design enables easy access and removal in high density patching environments

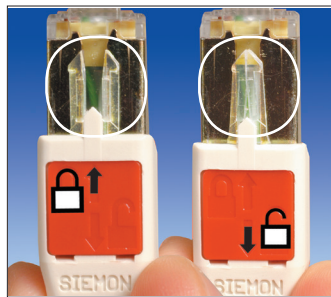
STANDARDS COMPLIANCE

- ANSI/TIA-568-C.2
- ISO/IEC 11801 Ed 2.2
- IEEE 802.3an (10GBase-T)
- IEEE 802.3af (PoE)
- IEEE 802.3at (PoE+)
- IEC 60603-7
- UL 1863 and CSA-C22.2 No. 182.4-M90
- IEC 60332-1 (LSOH)
- IEC 60754 (LSOH)
- IEC 61034 (LSOH)
- ANSI/TIA-1096-A
- IEC-60603-7-51



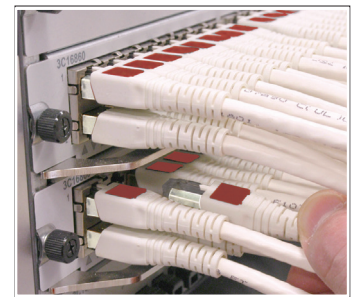
Universal Compatibility

Fits within any standard RJ-45 opening.



Revolutionary Latch

Simply push the boot forward to latch into the outlet and pull back to release.



High Density

The push-pull design enables easy access and removal via the boot in tight-fitting areas.

Product Information

ELECTRICAL

Contact Resistance	20Ω
Input to Output Resistance	200Ω
Min. Dielectric Withstand Voltage (contact to contact)	1000 V DC or AC peak
Insulation Resistance	500 mΩ
Compatibility	Backwards to Cat 5e and Cat 6
Current Rating @ 25°C	1.5 A
Power over Ethernet	Suitable for PoE and PoE+
Surface Transfer Impedance	< 10 mΩ/m @ 10 MHz

MECHANICAL - GENERAL

Operating Temperature	-10 to 60° C, (14 to 140° F)
Flammability Rating	UL 94 V-0
Green Features	RoHS, lead-free, halogen-free, PVC free
Plug Housing Materials	Polycarbonate
Contact Materials	50 microinches gold plating or equivalent
Plastic Materials	Flame retardant thermoplastic
Screen	360 degree enclosure
Marking	P/N, length, performance level, QC

MECHANICAL - PLUG

Number of Plug Insertion Cycles	2500
Min. Plug Retention Force	50N (11.2 lbf)
Plug Compatibility	Compatible with RJ45
Cable to Plug Tensile Strength (min.)	20 lbs.

MECHANICAL - CABLE (STRANDED)

Wire Size Range (Nominal)	26 AWG 7x32 Stranded tinned copper
Cable Construction	S/FTP
Cable OD (Nominal)	6.35mm (0.25 in)
Wiring	T568A/B
Jacket type	CM/LSOH
Bend Radius	50mm (2.0 in.)

Ordering Information

Category 6A Shielded BladePatch

Shielded Category 6A BladePatch LSOH, double-ended RJ-45 modular patch cord with push-pull latching design, color matching cord/boot, T568A/B

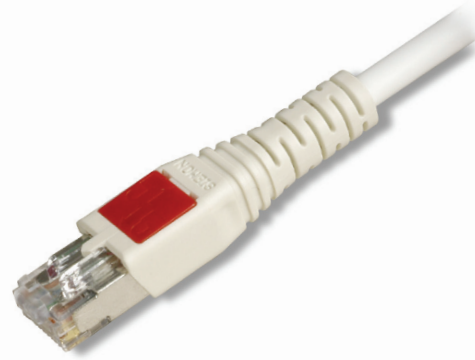
10GBPS-(XX)M-(XX)L

Cord Length	Cord Color
01 = 1m (3.3 ft.)	01 = Black
1.5 = 1.5m (4.9 ft.)	02 = White
02 = 2m (6.6 ft.)	03 = Red
03 = 3m (9.8 ft.)	04 = Gray
04 = 4m (13.1 ft.)	05 = Yellow
05 = 5m (16.4 ft.)	06 = Blue
	07 = Green

The use of Category 6A shielded BladePatch modular cords will provide Category 6A channel performance if used in a Z-MAX 6A system.

Z-MAX 6A warranty margins do not apply.

Because we continuously improve our products, Siemon reserves the right to change specifications and availability without prior notice.



North America P: (1) 860 945 4200	Asia Pacific P: (61) 2 8977 7500	Latin America P: (571) 657 1950/51/52	Europe P: (44) 0 1932 571771	China P: (86) 215385 0303	India Middle East P: (971) 4 3689743
---	--	---	--	-------------------------------------	--

Siemon Interconnect Solutions
P: (1) 860 945 4213
www.siemon.com/SIS

WWW.SIEMON.COM

