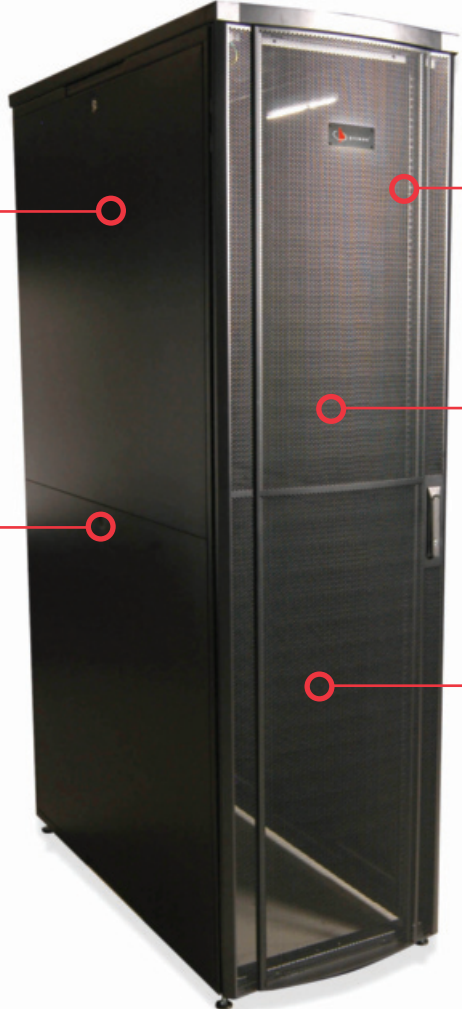


42U V600 Cabinets



The 42U V600 cabinet provides a robust, cost-effective enclosure solution that is ideal for use in conjunction with 42U VersaPOD® data center cabinets for spaces or markets that have limited height requirements. While not compatible with VersaPOD's Zero-U vertical patching and cable management products, it shares a common appearance for standard cabinet applications.



Lightweight Stability – Design provides an extremely stable, high-capacity cabinet without excessive weight

Enhanced Side Access – Horizontally split side panels provide convenient access to installed equipment

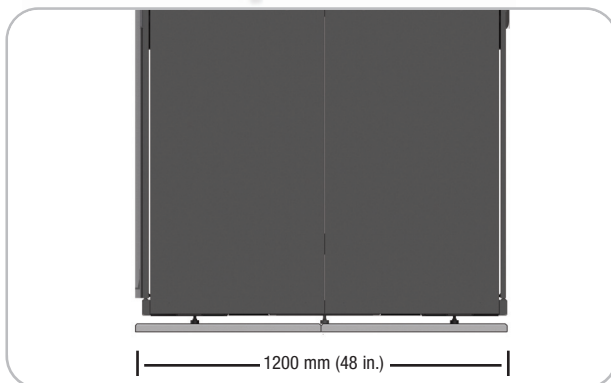
Common Appearance – V600 cabinets share a common appearance with VersaPOD cabinets for improved aesthetics in data centers using both cabinet styles

High-Flow Doors – Contoured high density perforated door provides 71% perforation exceeding major IT equipment air flow requirements

Full Accessibility Doors – Quick release, field reversible single piece front and split rear doors



Fully adjustable mounting rails can be readily configured to support any range of equipment depths



The VP2A cabinet is a true 1200mm deep, allowing for full access to adjacent tiles immediately in front or in back of placed cabinets



Compatible with VersaPOD thermal management options including exhaust fans and brush guards (1200mm version compatible with VersaPOD Vertical Exhaust Ducts)

Cabinet Ordering Information

Part #	Description
V6(X)A-(X)(X)(X)(X)(X)1-42	V600 Cabinet, 42U, Black
Cabinet Depth	Castor Option
1 = 1000mm (40 in.)	1 = No Casters
2 = 1200mm (48 in.)	2 = Casters
Side Panels	Lock Type
0 = No Side Panels	1 = Key Lock
1 = 1 Side Panel	2 = Tumbler Lock
2 = Side Panels	
Front Door	Rear Door
A = Full Vented	A = Full Vented
B = Split Vented	B = Split Vented
C = Split Solid	C = Split Solid



Includes 4 leveling feet, 50 cage nuts and 2 stabilizing brackets

V600 Cabinet Product Specifications

Dimensions	
Height	2000 mm (78.7 in.)
Width	600 mm (23.6 in.)
Depth	V61A: 1000mm (39.4 in.), V62A: 1200mm (48.0 in.)
Weight	V61A: 117 kg (257 lbs.), V62A: 129 kg (285 lbs.)
Base Type	Open
Color	Black
% Door Perforation	71%
U Space Identification	Yes
Lid Cable Access Openings	V61A: 4 (small); 1 (large), V62A: 3 (small); 3 (large)
Material	CRS of varying thickness
Finish	Textured Powder Coat
Standards Compliance	UL 60950-1 Ed2.0, CEA-310-E, CSA C22.2 NO. 60950-1-07
Load Rating	1360 kg/3000 lbs (static); 1020 kg/2250 (Dynamic)

V600 Cabinet Accessory Ordering Information

V6A-DRA-1-42

V600 Full Vented Door, 42U, Black

V6A-DRB-1-42

V600 Split Vented Doors (set of 2), 42U, Black

V6A-DRC-1-42

V600 Split Solid Doors (set of 2), 42U, Black

V61A-S-1-42

V61A Split Side Panels (set of 2), 42U, Black

V62A-S-1-42

V62A Split Side Panels (set of 2), 42U, Black

V6A-R-1-42

V600 Mounting Rails (set of 2), 42U, Black

VP-DUCT1*

Adjustable Height Vertical Exhaust Duct, 516-923mm (20-36 in.)

VP-DUCT2*

Adjustable Height Vertical Exhaust Duct, 913-1320mm, (36-52 in.)

V-PDU-1-42

V600 Vertical PDU/Cable Management Bracket, 42U, Black, (set of 2)
Supports tool-less mounting of up to (2) vertical rack mount PDU's

VP-FAN

Top-Mount Cooling Fan Panel, - 3 Fans x 110CFM, 120VAC w/NEMA 5-15P plug, UL Listed

VP-FAN-220

Top-Mount Cooling Fan Panel, - 3 Fans x 110CFM, 220VAC w/C13 plug, UL Listed

VP-T3

Brush Guard, Large, - For large center top panel cable openings

VP-BRUSH

Brush Guard, Small, - For small perimeter top panel cable openings

VA-VPA-BAY-1

VersaPOD-to-V600 Baying Kit, - Secures (1) VersaPOD cabinet to (1) V600 cabinet

VP-GRD

Grounding Kit- - Includes ground bar, ground wire, mounting hardware, and accessories
(capacity to support all required grounding connections for a single cabinet)

**Vertical exhaust ducts are compatible with V62A cabinets only. Solid doors should be specified for cabinets using exhaust ducts.*



VP-DUCT(X)



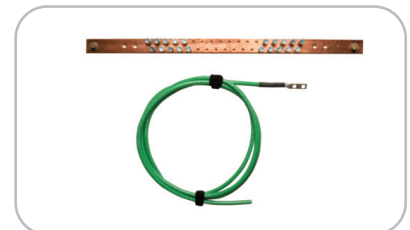
VP-FAN(-220)



VP-T3



VP-BRUSH



VP-GRD

Cable Management Accessories

VP-143

¼-Turn D-Ring Cable Manager (box of 10),
88.9 x 44.5mm (3.50 x 1.75 in.)
For use with Vertical PDU/Cable Management Bracket



VP-143

VCM-25-(XX)-01

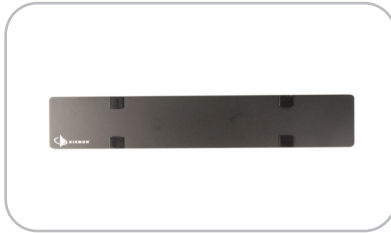
Hook and Loop Cable Managers (roll of 25)
- For use with Vertical PDU/Cable Management Bracket
Use (XX) to specify length: 06 = 6", 12 = 12", 18 = 18"



VCM-25-06-01

HCM-4-(X)U

RoutelT™ 19" Horizontal Cable Manager w/4" Fingers
Use (X) to specify height: 1 = 1U, 2 = 2U, 4 = 4U



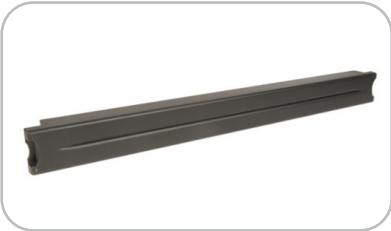
HCM-4-2U

PNL-TBLNK010-1S

19" Toolless Blank Filler Panel, 1U (package of 10)

PNL-BRSH-1

19" Brush Guard Panel, 1U



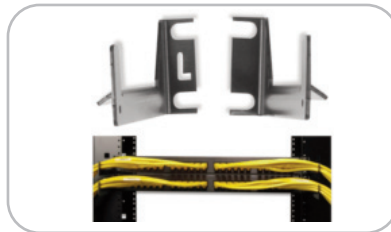
PNL-TBLNK010-1S



PNL-BRSH-1

PCM-1

Front Mount Panel Cable Manager



PCM-1

Because we continuously improve our products, Siemon reserves the right to change specifications and availability without prior notice.

Worldwide Headquarters North America

Watertown, CT USA
Phone (1) 860 945 4200 US
Phone (1) 888 425 6165

Regional Headquarters EMEA

Europe/Middle East/Africa
Surrey, England
Phone (44) 0 1932 571771

Regional Headquarters Asia/Pacific

Shanghai, P.R. China
Phone (86) 21 5385 0303

Regional Headquarters Latin America

Bogota, Colombia
Phone (571) 657 1950