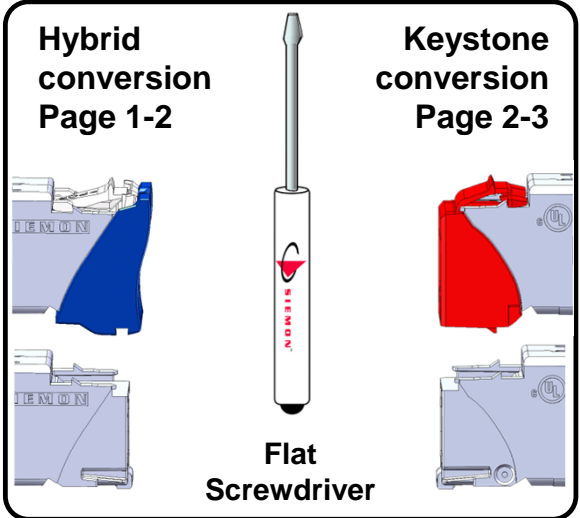
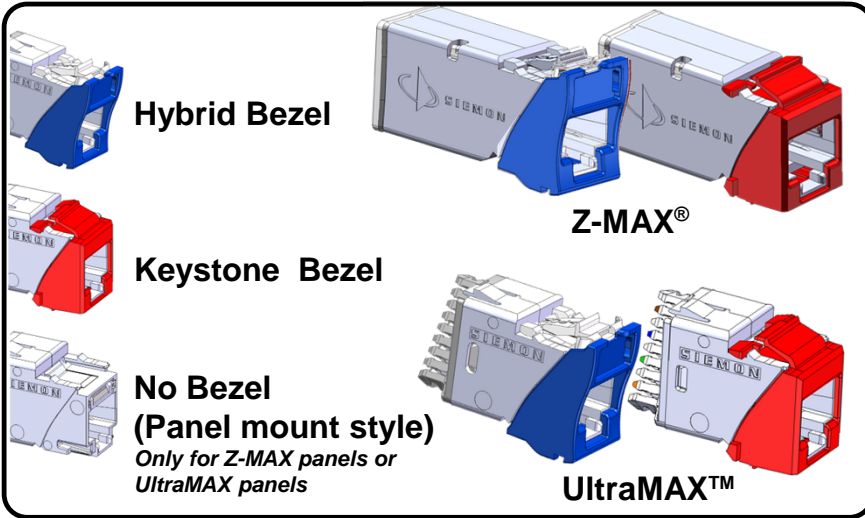
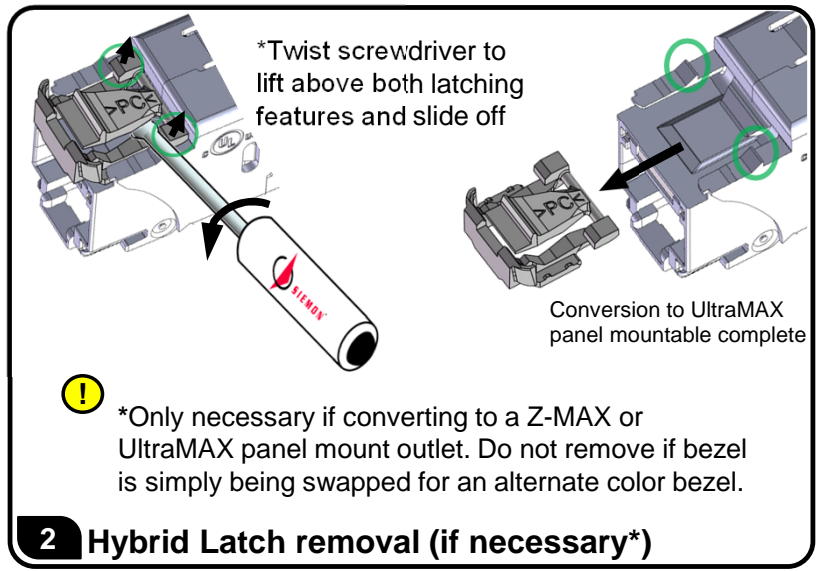
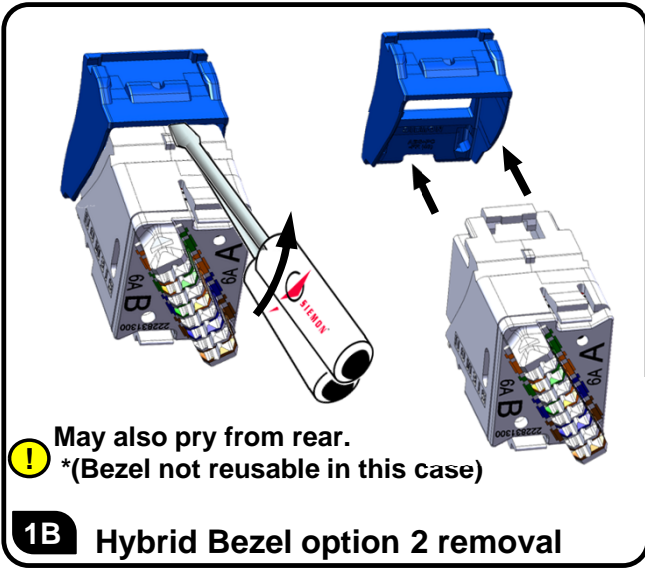
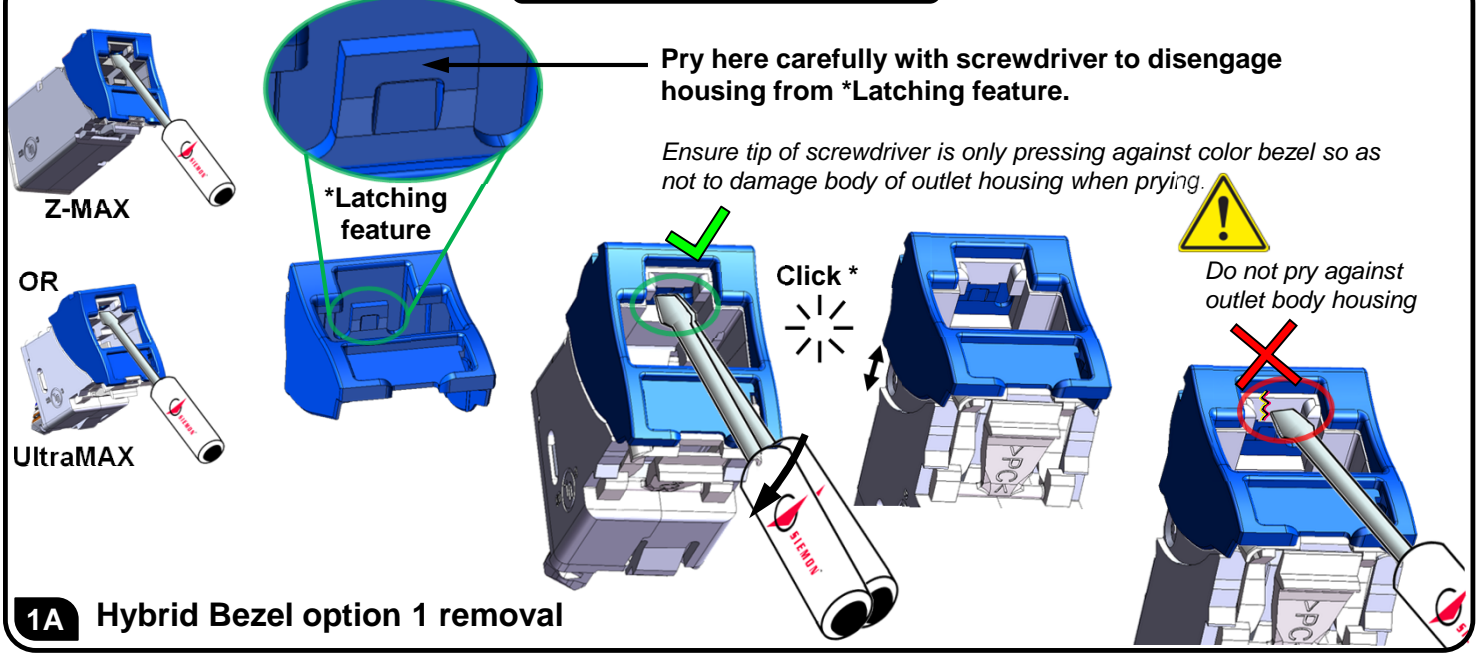


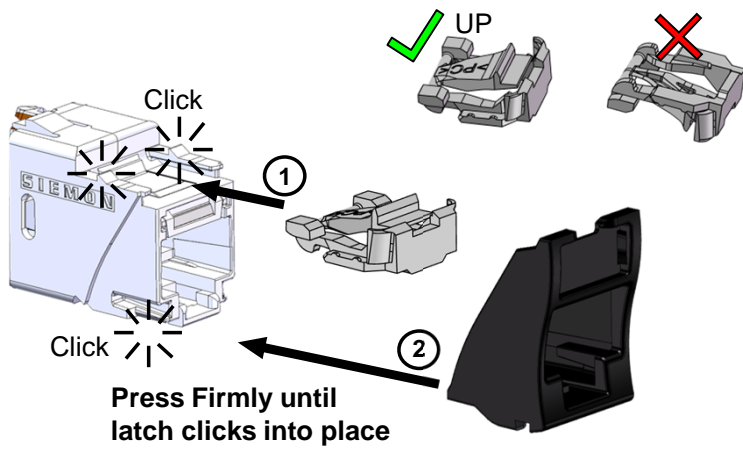
Z-MAX® and UltraMAX™ Hybrid & Keystone Bezel Conversion Instructions



Hybrid Bezel Version



Z-MAX[®] and UltraMAX[™] Hybrid & Keystone Bezel Conversion Instructions



Press Firmly until latch clicks into place



Hybrid Bezel with spring door and ICON

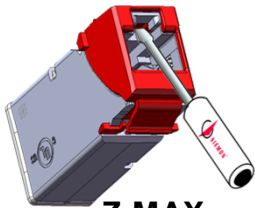
! Spring door version bezel: Ensure door is closed while installing for proper spring function

3 New Hybrid Latch & Bezel assembly

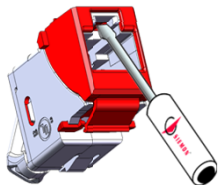
Keystone Bezel Version

Pry carefully with screwdriver to disengage housing from *latching feature.

! Ensure tip of screwdriver is only pressing against color bezel so as not to damage body of outlet housing when prying.

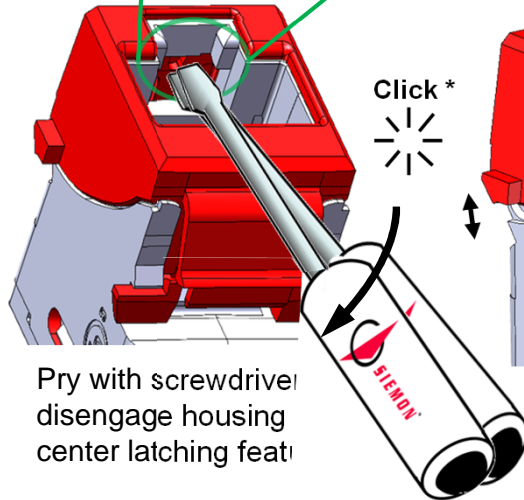
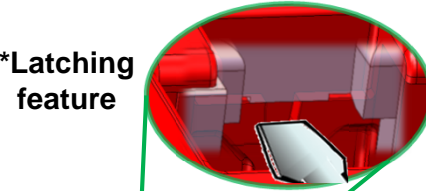


Z-MAX

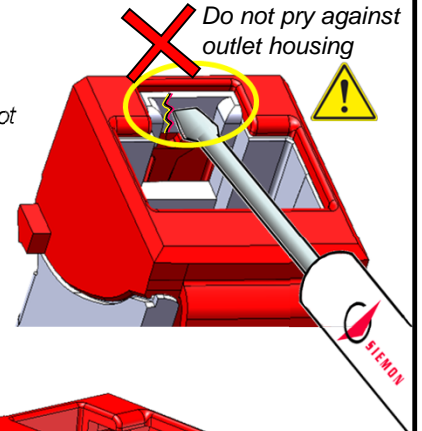


UltraMAX

*Latching feature



Pry with screwdriver disengage housing center latching feature



Do not pry against outlet housing

4 Keystone Bezel removal

Z-MAX[®] and UltraMAX[™] Hybrid & Keystone Bezel Conversion Instructions

Lift both latching wing features and slide off

5 Keystone Bezel Removal

May also pry from rear as needed.
! (Bezel may not be reusable)

Click

Press Firmly until all 3 latches click into place

Click

6 Keystone Bezel assembly

Hybrid Door Bezel (w/latch):
UZD-(XX)S

Hybrid Bezel (w/latch):
UZH-(XX)S

Keystone Bezel:
UZK-(XX)S

(XX) = color code of bezel.

7 Finished good Part #s

To assist safe installations, comply with the following:

- A. Use caution when installing or modifying telecommunications circuits.
- B. Never touch uninsulated wire terminals unless the circuit has been disconnected.
- C. Never install this device in a wet location.
- D. Never install wiring during a lightning storm.

Lors de l'installation, respectez les consignes de sécurité suivantes:

- A. Utiliser avec prudence lors de l'installation ou de la modification circuits de télécommunications.
- B. Ne jamais toucher les bornes de fil métallique non isolés sauf si le circuit a été débranché.
- C. Ne jamais installer cet appareil dans un endroit humide.
- D. Ne jamais installer pendant un orage.



To ensure you have the latest revision to this document, please visit: www.Siemon.com

Global Headquarters
 Watertown, Connecticut USA
 Tel: (1) 866-548-5814

For a complete listing of our global offices visit our web site