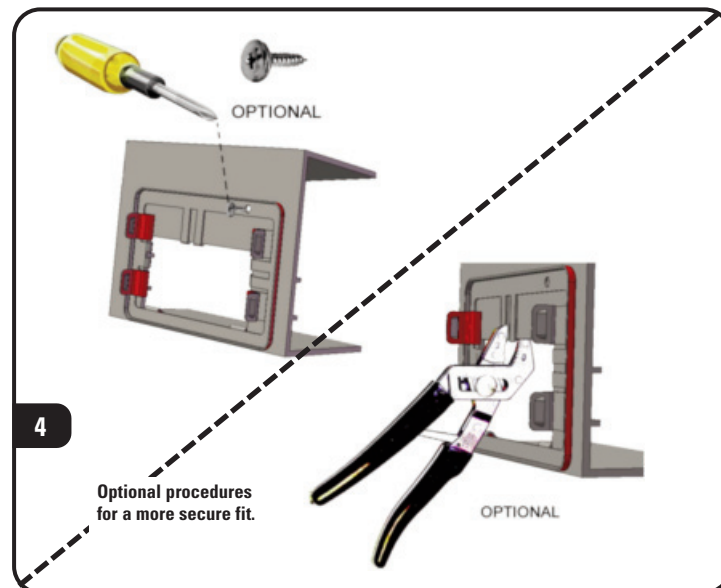
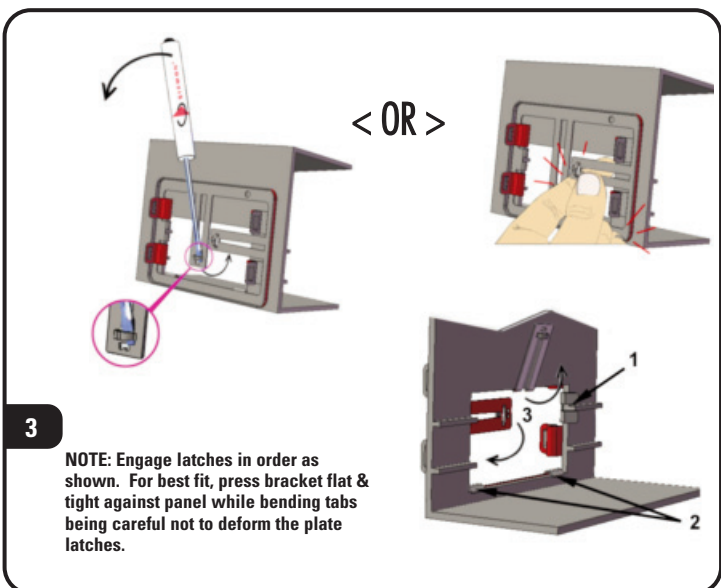
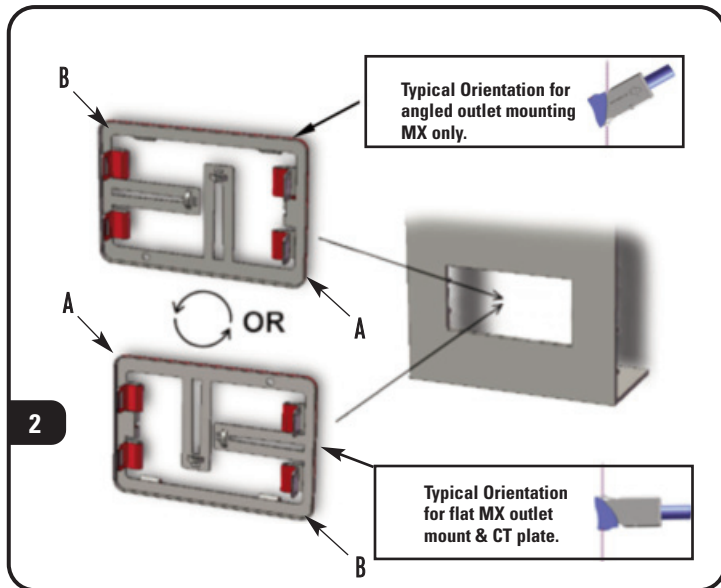
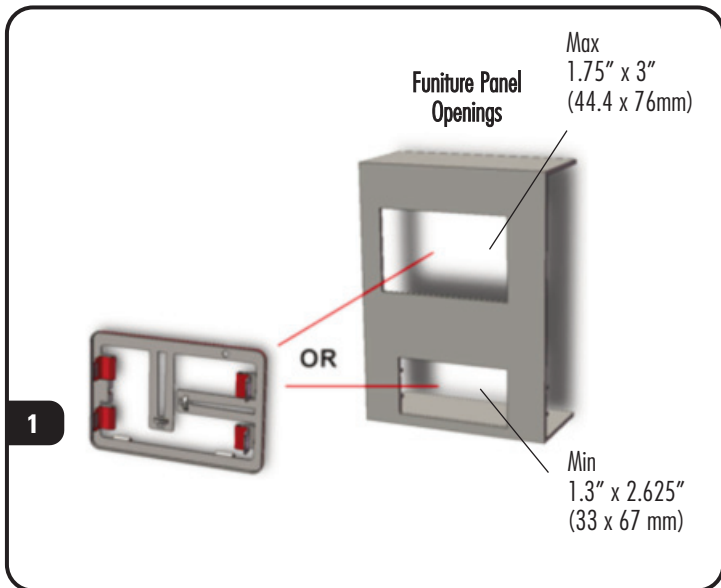
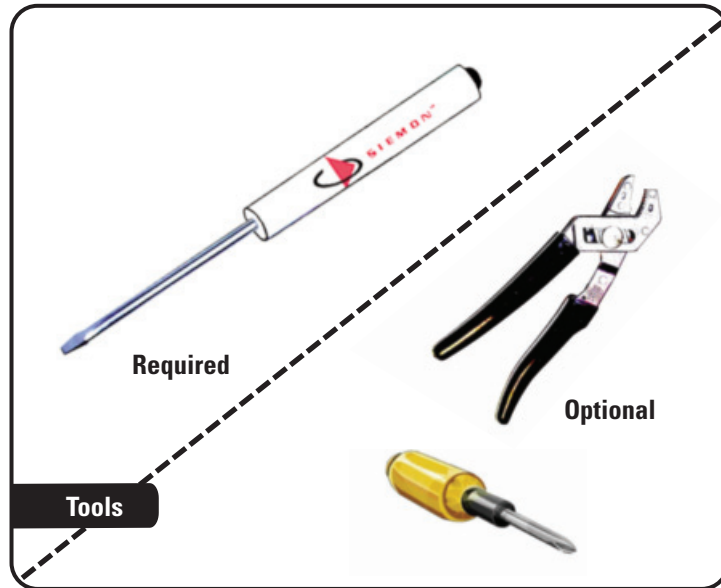
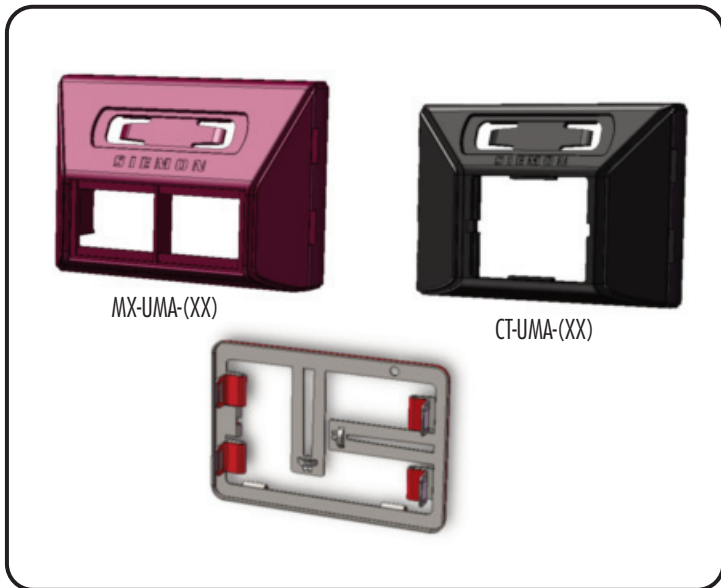


# Universal Modular Furniture Plate Instructions



# Universal Modular Furniture Plate Instructions

5

NOTE: Refer to applicable outlet instructions for termination and mounting details. Most outlets can be loaded from both front & rear.

< OR >  
(See Note)

1

2

3

6

4 X

7

XX XX XX XX

8

**Cover Removal**

2x  
(Either Side)

**To assist safe installations, comply with the following:**

- A. Use caution when installing or modifying telecommunications circuits.
- B. Never touch uninsulated wire terminals unless the circuit has been disconnected.
- C. Never install this device in a wet location.
- D. Never install wiring during a lightning storm.

**Lors de l'installation, respectez les consignes de sécurité suivantes:**

- A. Utiliser avec prudence lors de l'installation ou de la modification circuits de télécommunications.
- B. Ne jamais toucher les bornes de fil métallique non isolés sauf si le circuit a été débranché.
- C. Ne jamais installer cet appareil dans un endroit humide.
- D. Ne jamais installer pendant un orage.

For a complete listing of our global offices and contact information, visit [www.siemon.com](http://www.siemon.com)