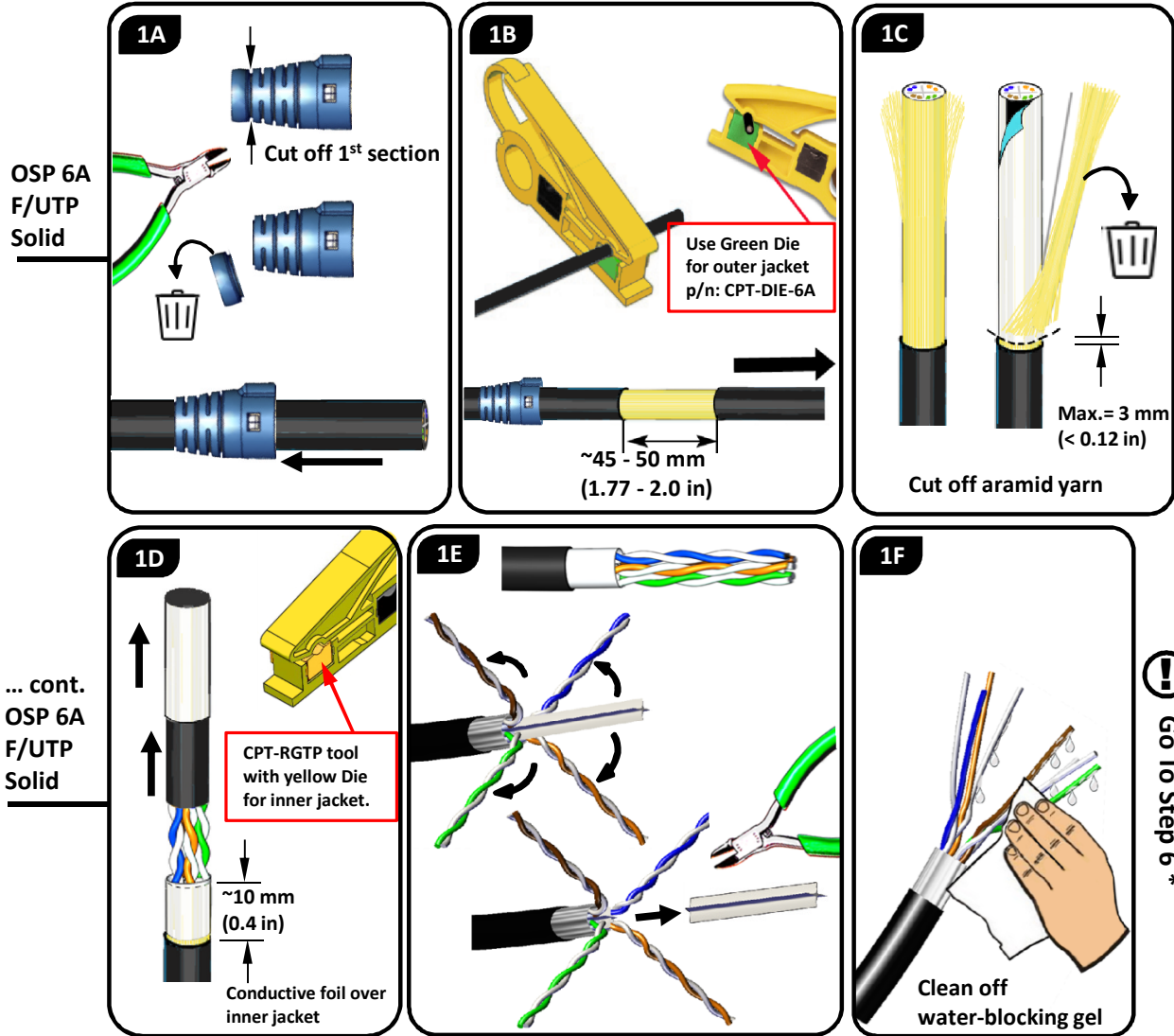


# Supplemental TERA Outlet Termination Instructions – OSP shielded cable preparation

Alternate Step 1 cable prep for OSP shielded cable (e.g. consolidation point application)



\* Refer back to TERA 4-Pair Outlet Termination Instructions 100.13727.00

Global Headquarters  
Watertown, Connecticut USA  
Tel: (1) 866-548-5814



For a complete listing of our global offices visit our web site

2015 Siemon Rev. A Aug. 2015