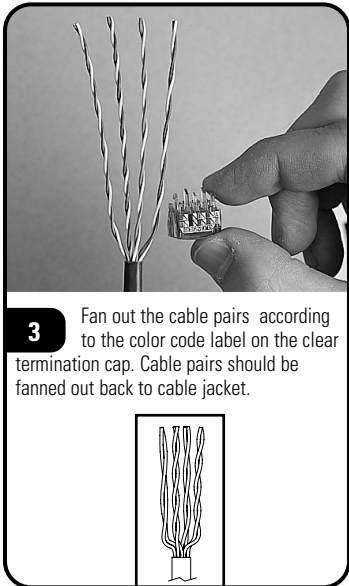
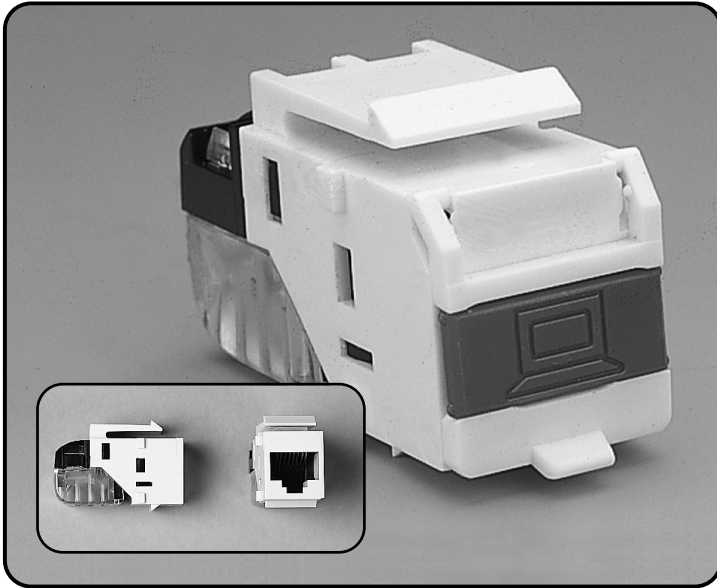
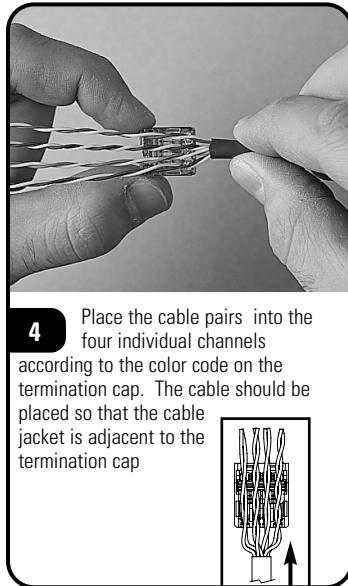


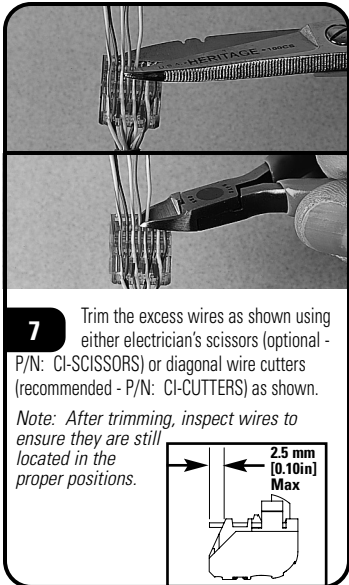
Keystone MAX[®] Series Module Instructions



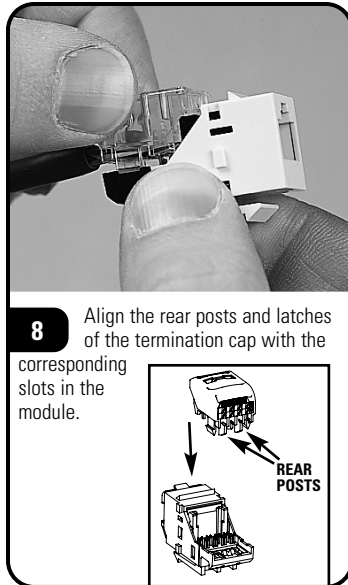
3 Fan out the cable pairs according to the color code label on the clear termination cap. Cable pairs should be fanned out back to cable jacket.



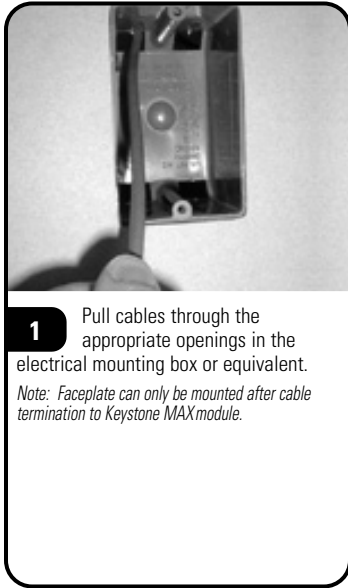
4 Place the cable pairs into the four individual channels according to the color code on the termination cap. The cable should be placed so that the cable jacket is adjacent to the termination cap.



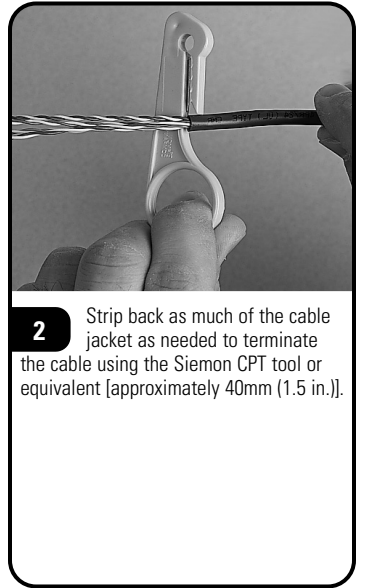
7 Trim the excess wires as shown using either electrician's scissors (optional - P/N: CI-SCISSORS) or diagonal wire cutters (recommended - P/N: CI-CUTTERS) as shown.
Note: After trimming, inspect wires to ensure they are still located in the proper positions.



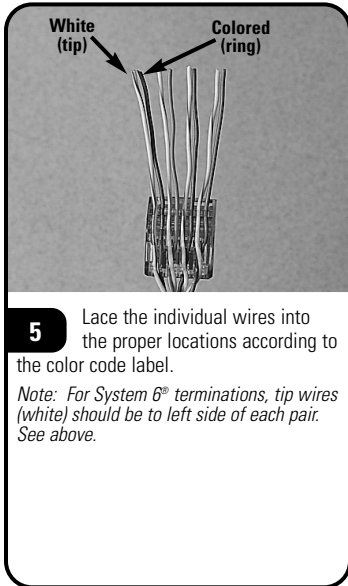
8 Align the rear posts and latches of the termination cap with the corresponding slots in the module.



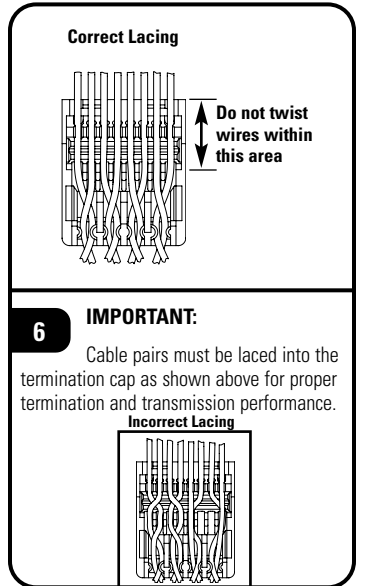
1 Pull cables through the appropriate openings in the electrical mounting box or equivalent.
Note: Faceplate can only be mounted after cable termination to Keystone MAX module.



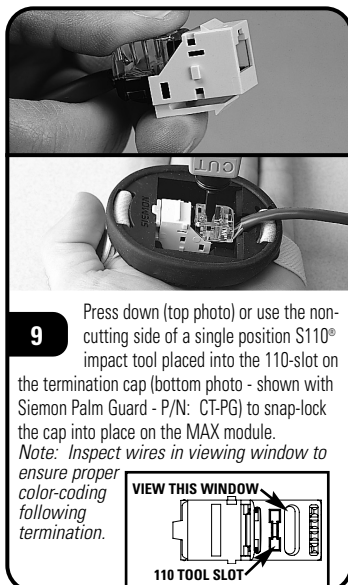
2 Strip back as much of the cable jacket as needed to terminate the cable using the Siemon CPT tool or equivalent [approximately 40mm (1.5 in.)].



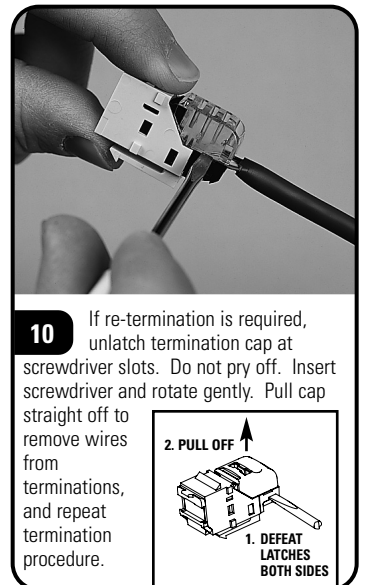
5 Lace the individual wires into the proper locations according to the color code label.
Note: For System 6[®] terminations, tip wires (white) should be to left side of each pair. See above.



6 **IMPORTANT:** Cable pairs must be laced into the termination cap as shown above for proper termination and transmission performance.

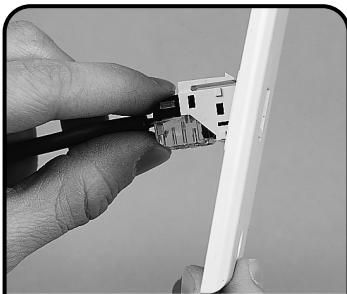


9 Press down (top photo) or use the non-cutting side of a single position S110[®] impact tool placed into the 110-slot on the termination cap (bottom photo - shown with Siemon Palm Guard - P/N: CT-PG) to snap-lock the cap into place on the MAX module.
Note: Inspect wires in viewing window to ensure proper color-coding following termination.

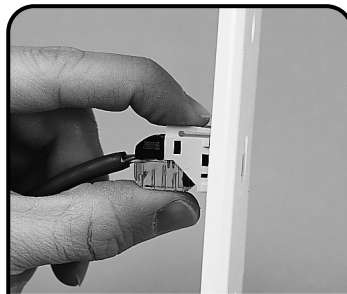
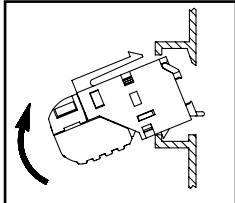


10 If re-termination is required, unlatch termination cap at screwdriver slots. Do not pry off. Insert screwdriver and rotate gently. Pull cap straight off to remove wires from terminations, and repeat termination procedure.

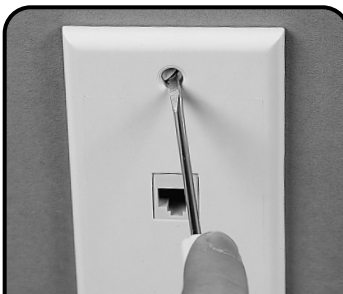
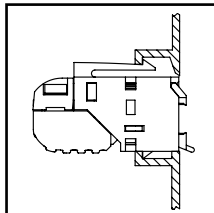
Keystone MAX Series Module Instructions



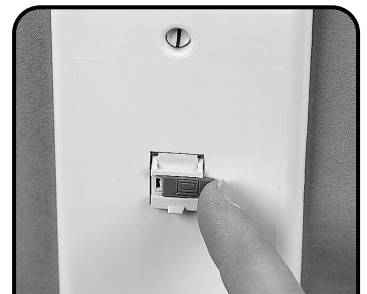
11 Insert MAX module by inserting into proper opening in faceplate...



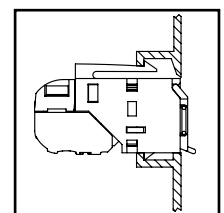
12 ...and lift upward until module snaps into place.



13 Mount the faceplate to the electric box.

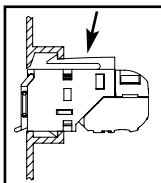


14 If using the hinged door, close door and insert color-coded icon.



Keystone MAX Module Removal

1 To remove the MAX module from the faceplate, remove faceplate and press down on the top latch of the module to disengage.



To assist safe installations, comply with the following:

- A. Use caution when installing or modifying telecommunications circuits.
- B. Never touch uninsulated wire terminals unless the circuit has been disconnected.
- C. Never install this device in a wet location.
- D. Never install wiring during a lightning storm.

Communication Circuit Accessory
Listed 5755



Global Headquarters
Watertown, Connecticut USA
Tel: (1) 866-548-5814

For a complete listing of our global offices visit our web site

