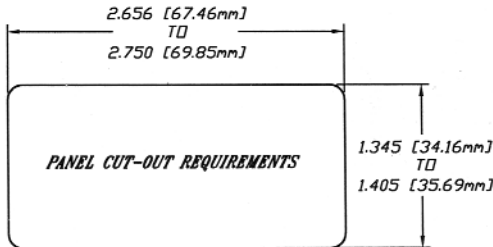
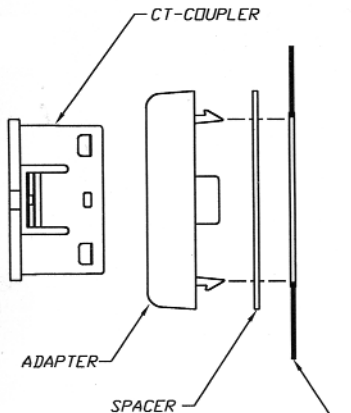


CT-MODULAR FURNITURE ADAPTER INSTRUCTIONS



MIN. DEPTH CLEARANCE FOR STANDARD CT COUPLER: 1.312 [33.32mm]
MIN. DEPTH CLEARANCE FOR CAT. 5 CT COUPLER: 1.000 [25.40mm]

RECOMMENDED PANEL THICKNESS: .030 - .080
[.76mm] - [2.03mm]

1. SPACER PROVIDED FOR PANEL THICKNESSES FROM .030 [.76mm] TO .050 [1.27mm].
2. IF NEEDED, ALIGN SPACER WITH ADAPTER AS SHOWN AND FIT OVER ADAPTER LATCHES.
3. SNAP ADAPTER AND SPACER (IF NEEDED) INTO THE PANEL CUT-OUT.
4. FEED WIRING THROUGH ADAPTER OPENING AND CONNECT TO CT-COUPLER.
5. SNAP COUPLER INTO ADAPTER.
6. THE ADAPTER MAY BE REMOVED BY DEFEATING THE LATCHES WITH A SMALL SCREWDRIVER. SLOTS HAVE BEEN PROVIDED IN THE FRONT OF THE ADAPTER FOR ACCESSING THE LATCHES.

NOTE: CT-MFP ADAPTERS HAVE BEEN DESIGNED TO FIT PANEL OPENINGS OF MOST FURNITURE MANUFACTURERS. PLEASE CONSULT YOUR FURNITURE DEALER FOR SPECIFIC INFORMATION REGARDING CUT-OUT DIMENSIONS.