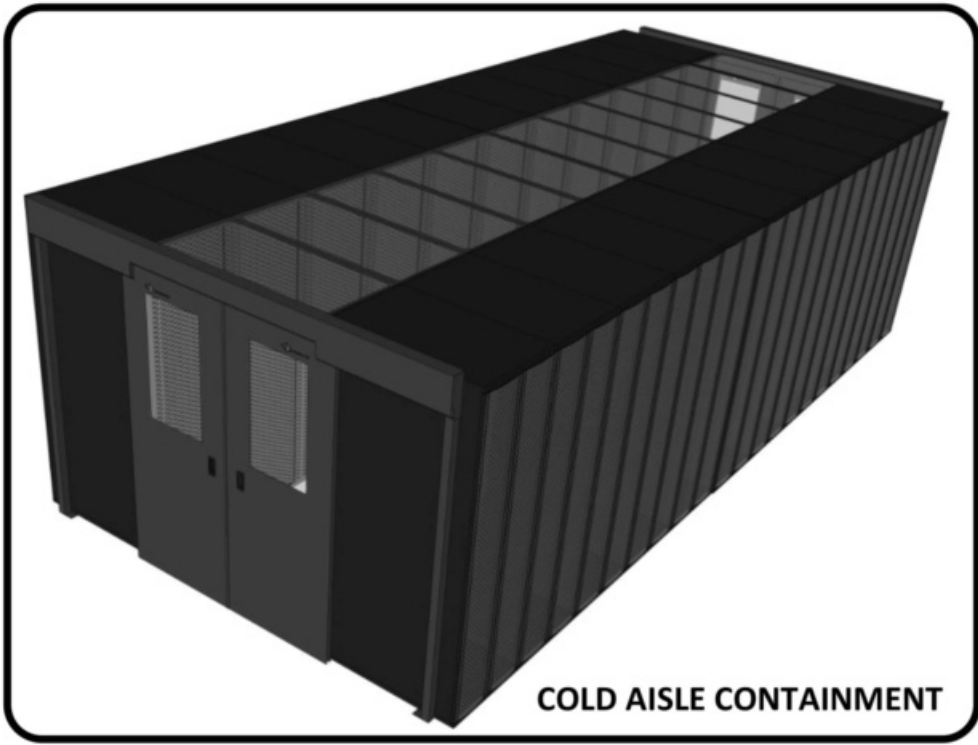
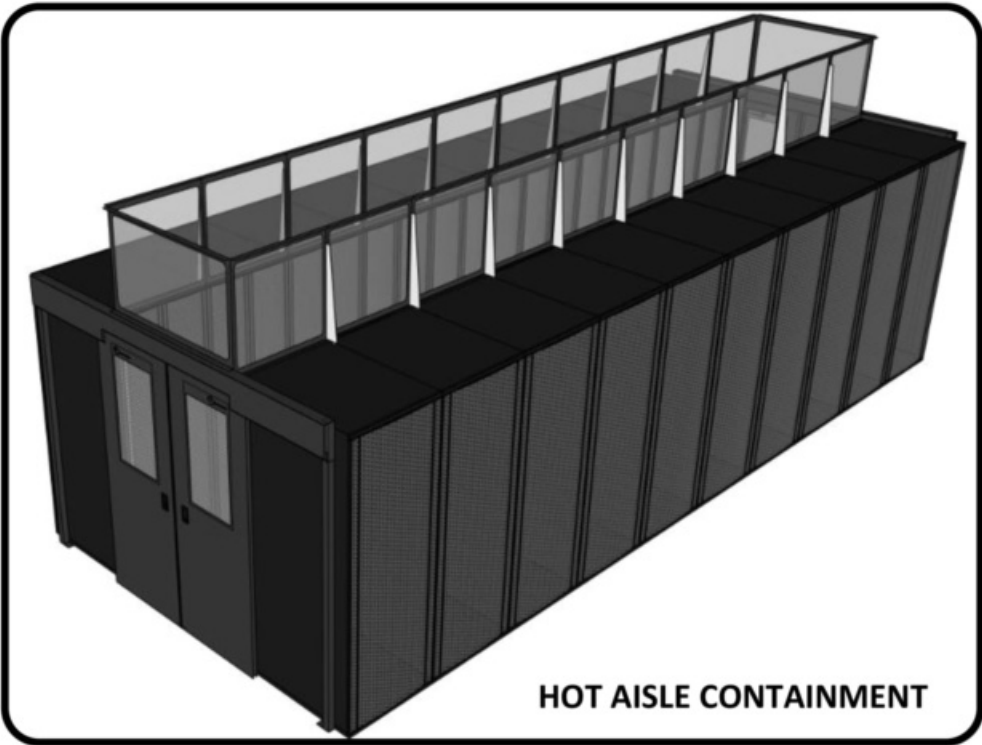


Containment Unit Installation Instructions



SIEMON™

www.siemon.com

Hot Aisle Hardware

HOT AISLE HARDWARE

TOOLS REQUIRED

- #2 Philips Screw Driver
- 2, 3, 4, & 5 mm Allen Wrenches
- 8, 10 & 13 mm Wrenches
- Needle Nose Pliers
- Electric Drill
- #2 Philips Head Drive Tip for Drill

DOOR FRAME:

32 – Self Tapping Screws

6 – Allen Bolts

4 – 50mm (2") Lag Screws

4 – Plastic Push Pins

2 – M6 Lock Nuts & washers

6 – Nylon Nuts

2 – 500mm (20") Bonding Wire

END PANELS:

3 – Self Tapping Screws

3 – Star Washers

4 – M6 Bolts

4 – M6 Flange Nuts

ANGLE SUPPORTS:

2 – Self Tapping Screws

2 – Star Washers

2 – M6 Bolts

2 – M6 Flange Nuts

SAFETY CONCERNS:

- Due to the size and weight of most of the components, it is recommended that a minimum of 2 technicians be involved in the unpacking and assembly of the system.
- Bonding of all components is accomplished through the proper use bonding posts, star washers and bonding wires included with hardware for each part of the system.

Cold Aisle Hardware

COLD AISLE HARDWARE

TOOLS REQUIRED

- #2 Philips Screw Driver
- 2, 3, 4, & 5 mm Allen Wrenches
- 8, 10 & 13 mm Wrenches
- Needle Nose Pliers
- Electric Drill
- #2 Philips Head Drive Tip for Drill

DOOR FRAME:

- 32 – Self Tapping Screws
- 6 – Allen Bolts
- 4 – 50mm (2") Lag Screws
- 4 – Plastic Push Pins
- 2 – M6 Lock Nuts & washers
- 6 – Nylon Nuts
- 2 – 500mm (20") Bonding Wire

TOP PANELS:

- 4 – Self Tapping Screws
- 2 – Star Washers
- 2 – M6 Bolts
- 2 – M6 Flange Nuts

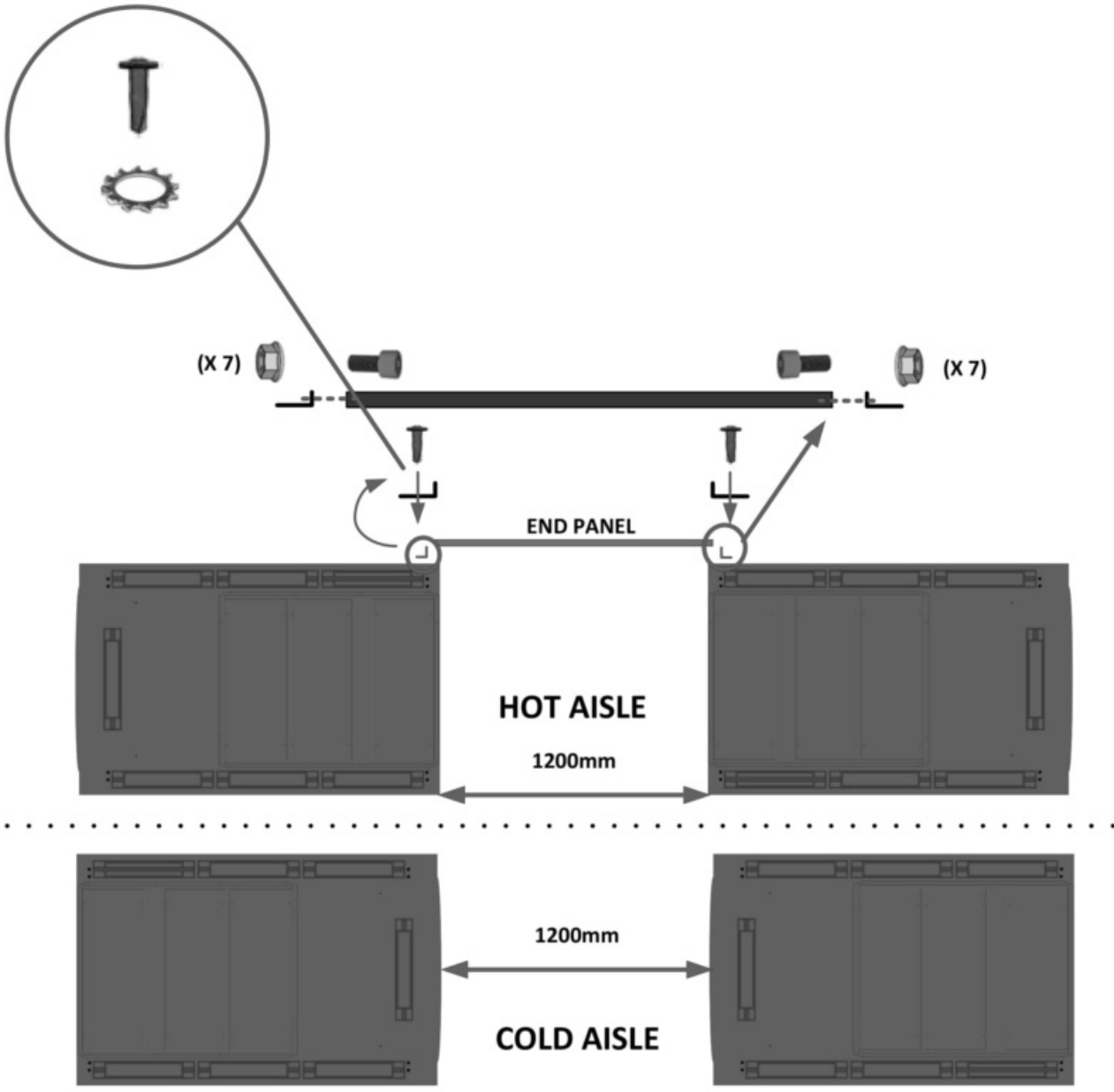
END PANEL:

- 2 – Star Washers
- 14 – M6 Bolts
- 14 – M6 Flange Nuts
- 10 – Self Tapping Screws

SAFETY CONCERNS:

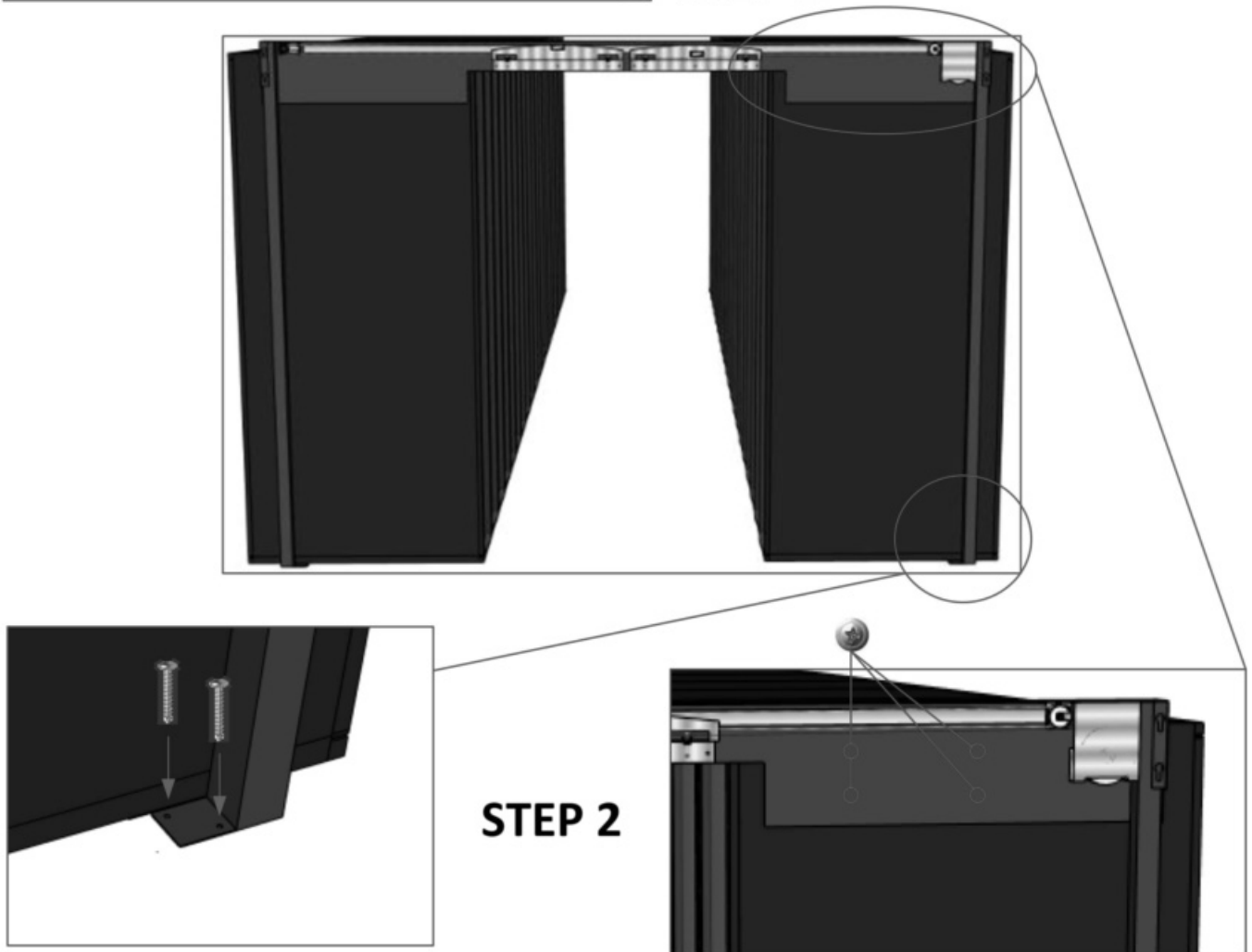
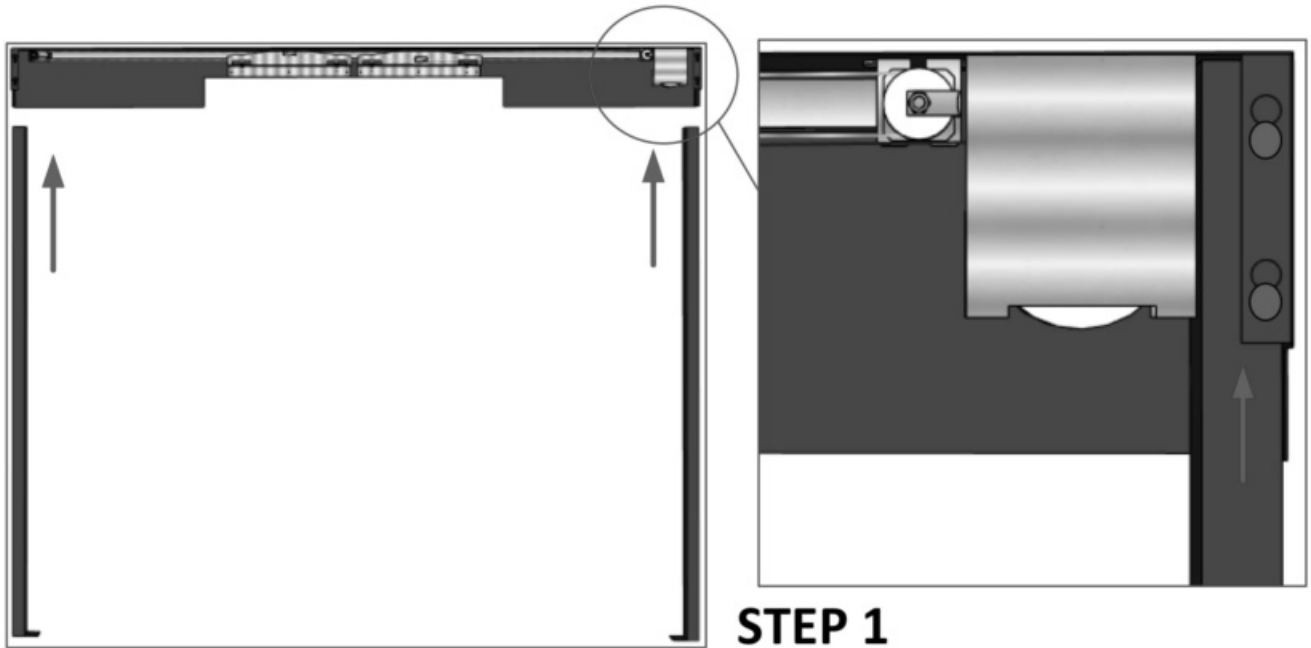
- Due to the size and weight of most of the components, it is recommended that a minimum of 2 technicians be involved in the unpacking and assembly of the system.
- Bonding of all components is accomplished through the proper use bonding posts, star washers and bonding wires included with hardware for each part of the system.

Cabinet Spacing & Aisle End Panel Installation



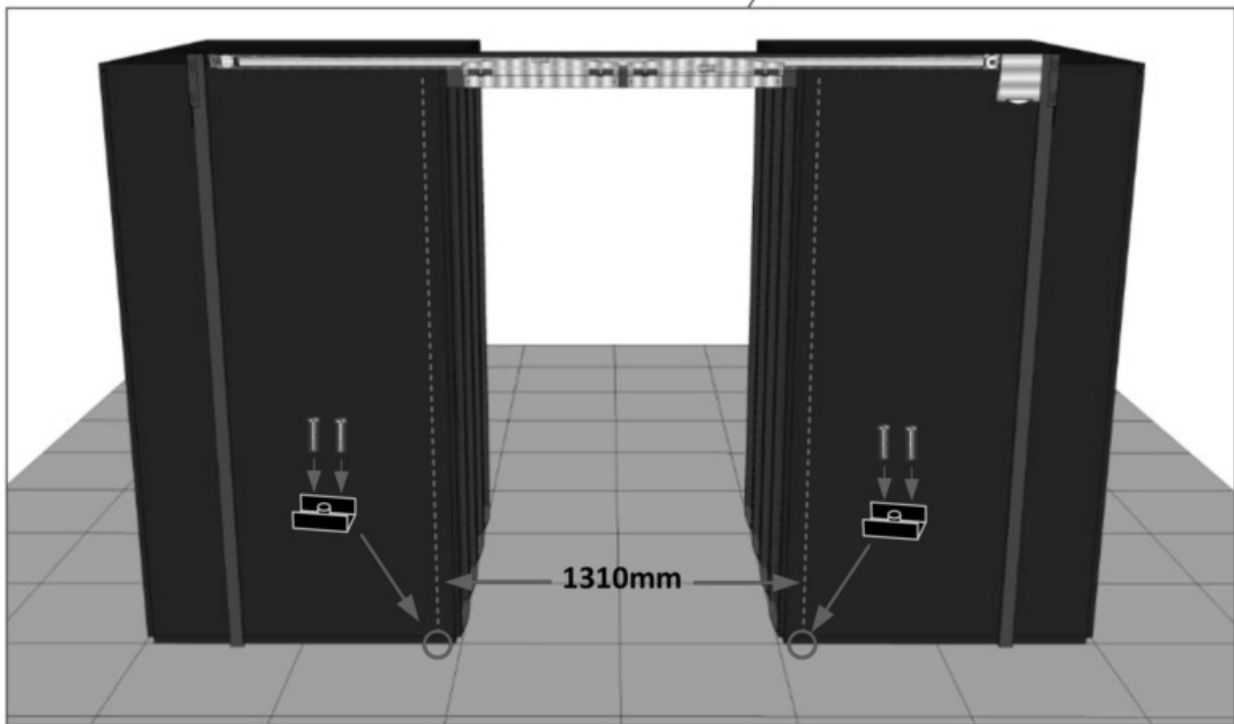
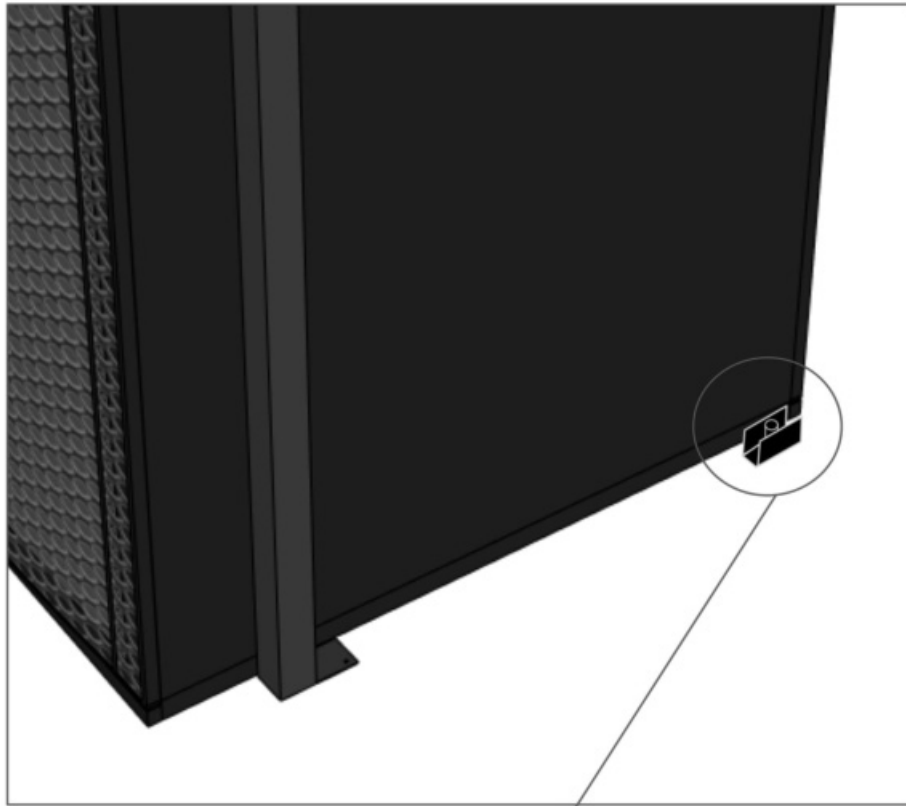
NOTE:
Cabinets on each side of the aisle should be level and of the same height

Door Assembly Installation



Door Assembly Installation

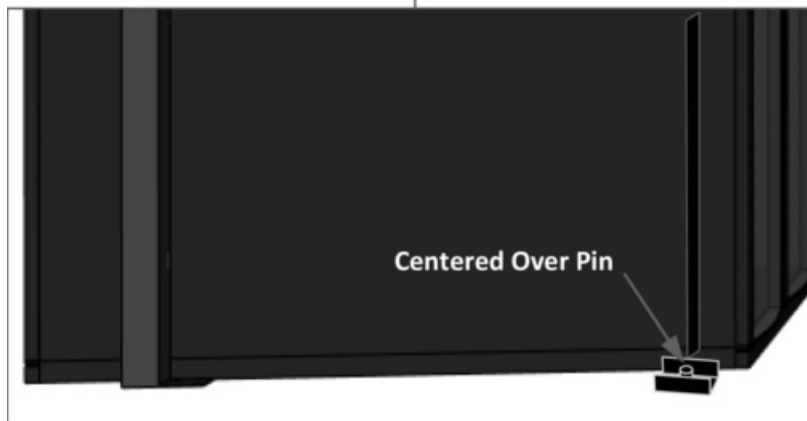
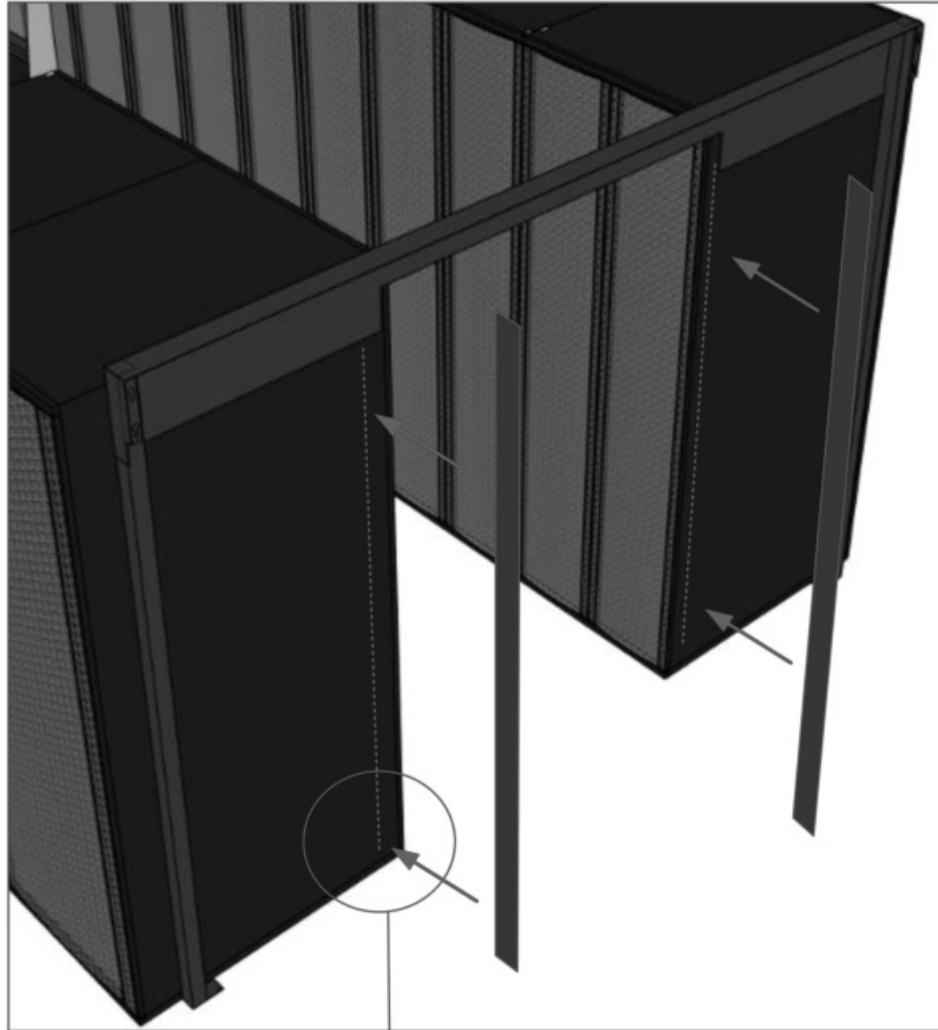
DOOR GUIDE



STEP 3

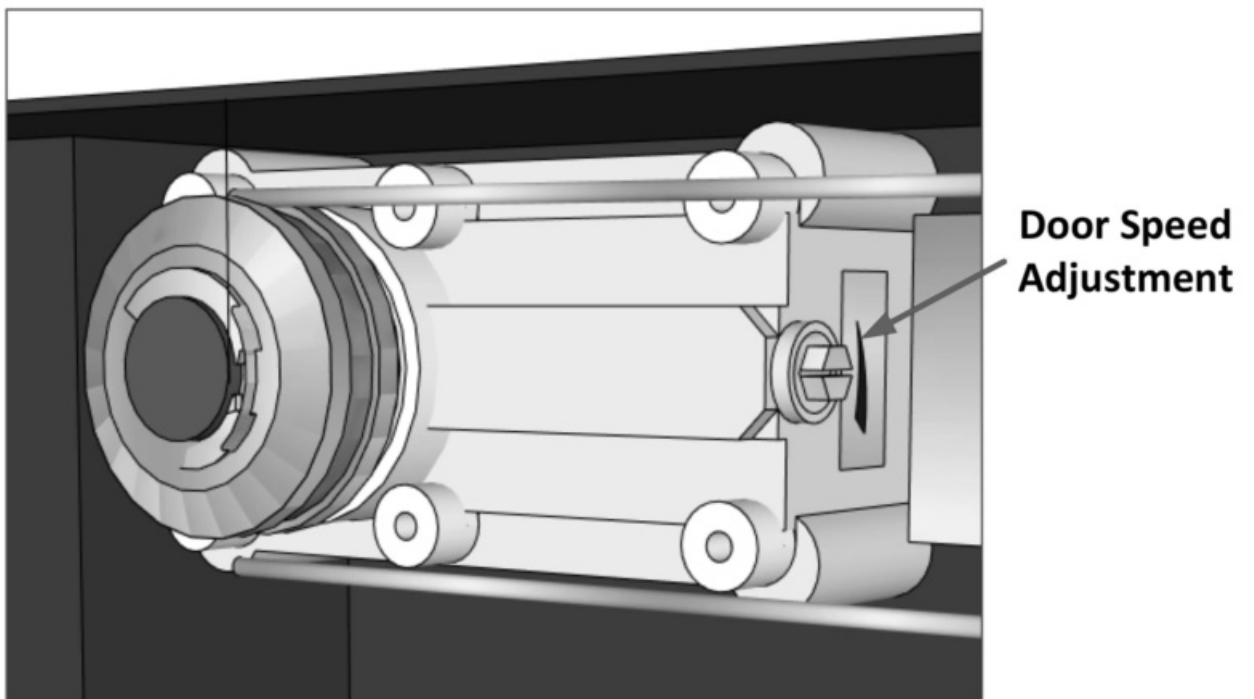
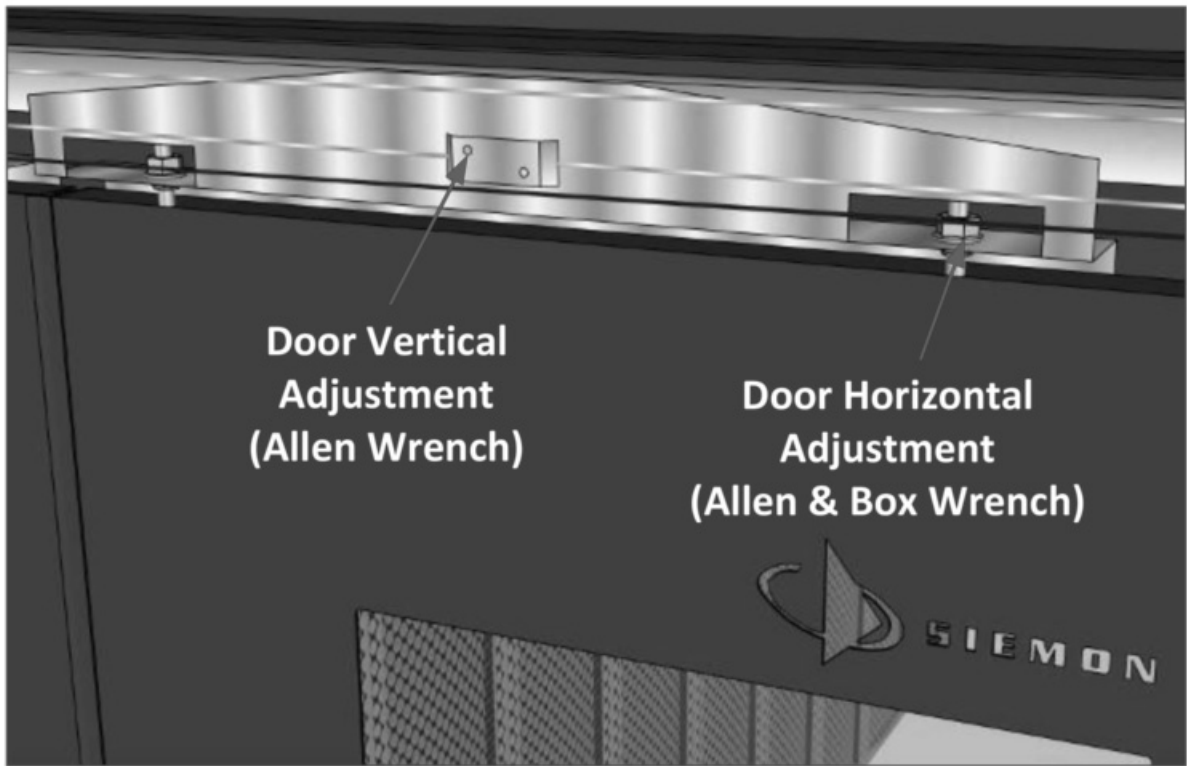
Door Assembly Installation

ADHESIVE BRUSH STRIPS



STEP 4

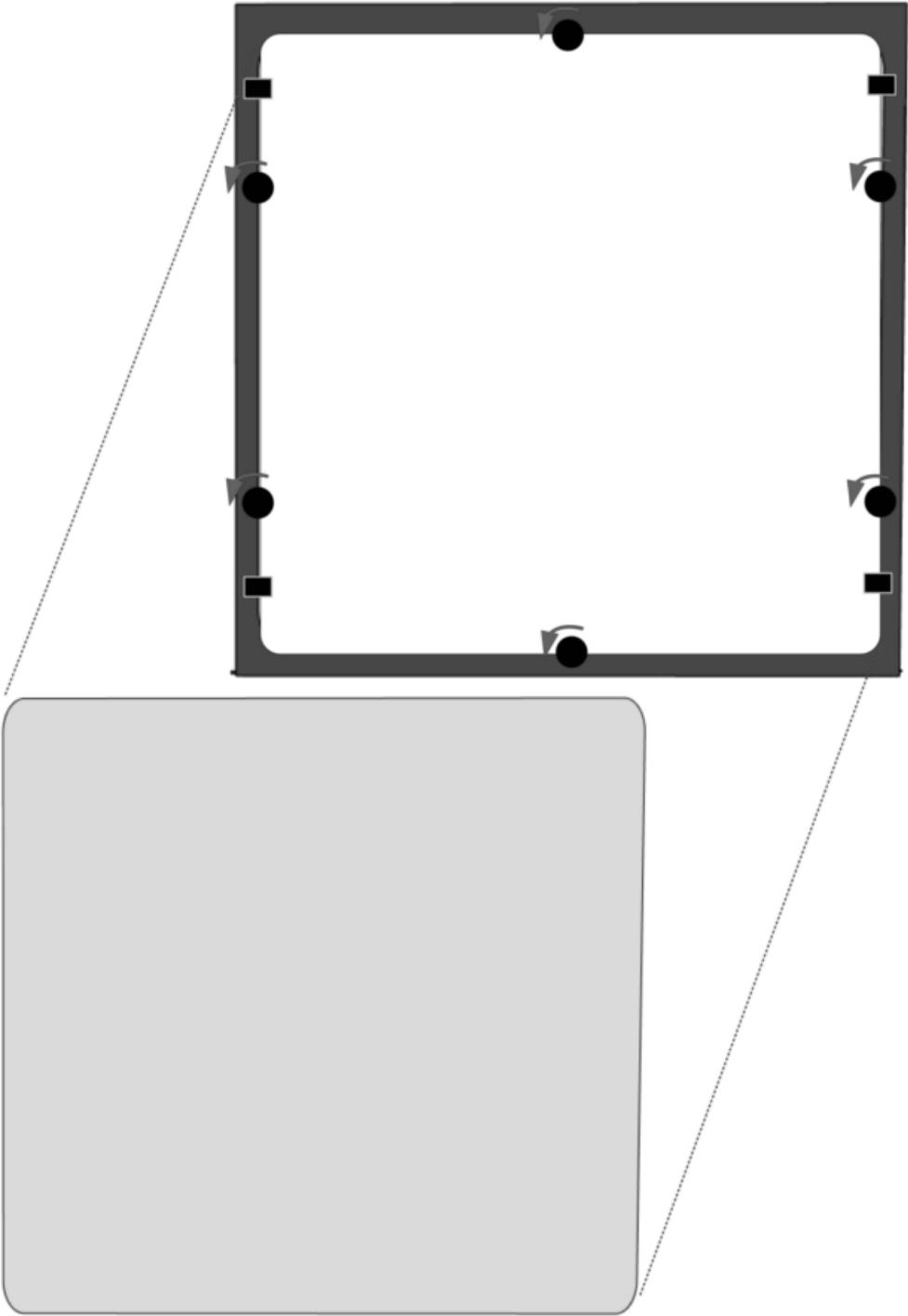
Door Adjustments



STEP 5

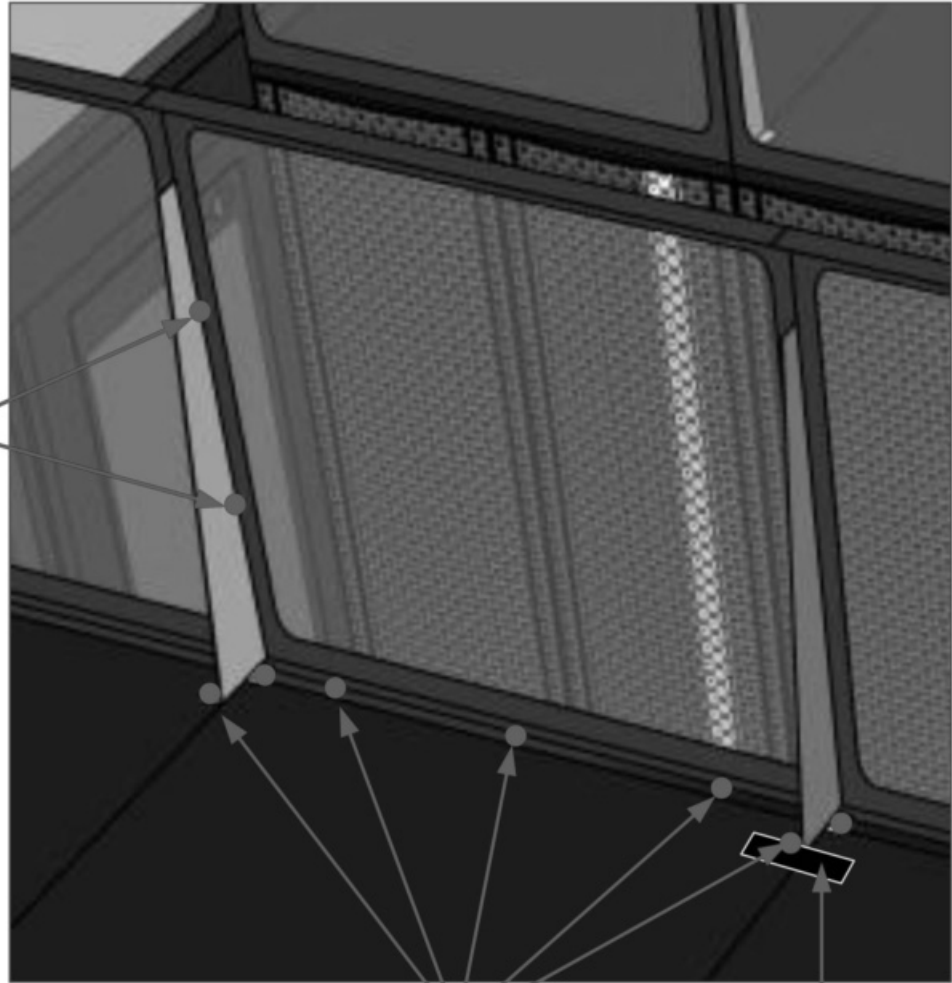
Hot Aisle Vertical Panel Installation

Remove Plexiglass Panels



Hot Aisle Vertical Panel Installation

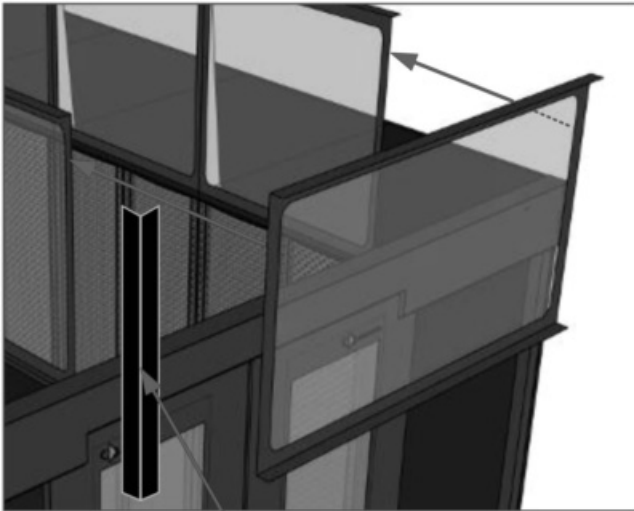
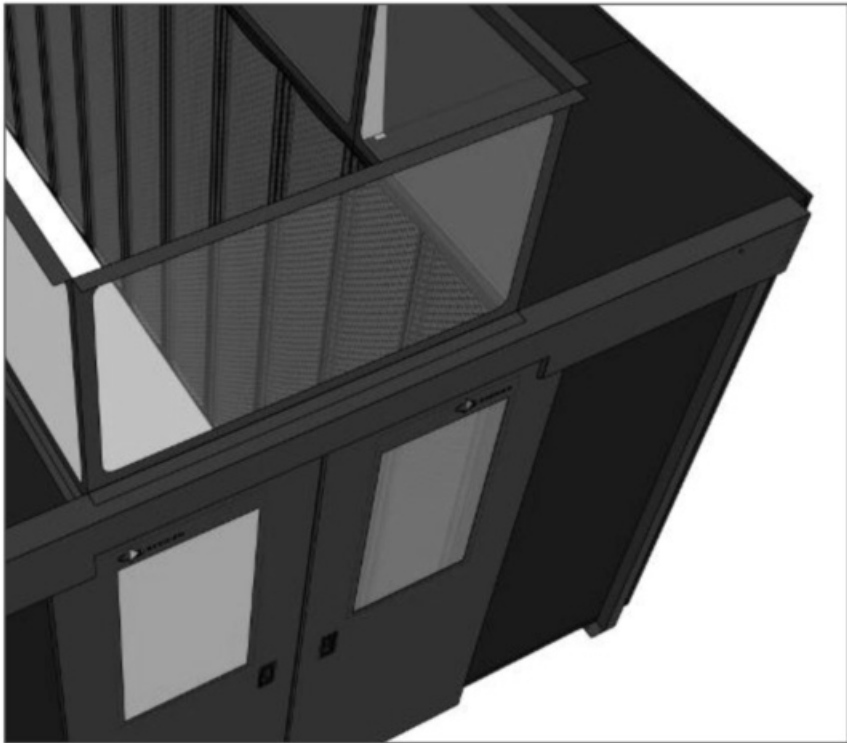
Attach vertical
braces to panels
using 4 bolts &
nuts provided



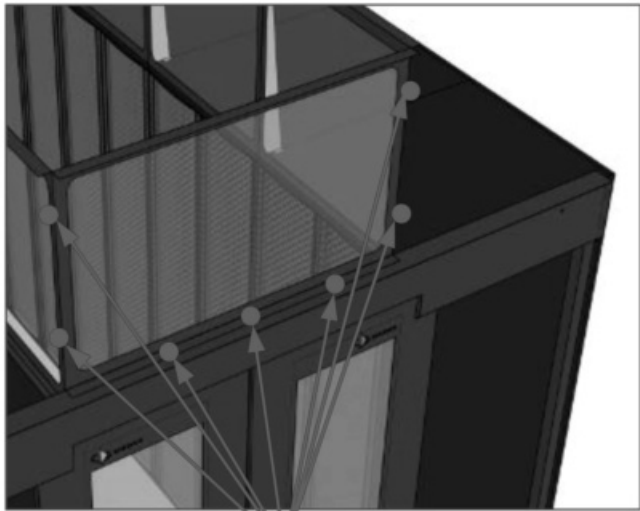
Secure vertical panel and
braces using self tapping
screws provided

Remove rear baying
bracket when used with
the VersaPOD cabinet

Hot Aisle End Panel Installation



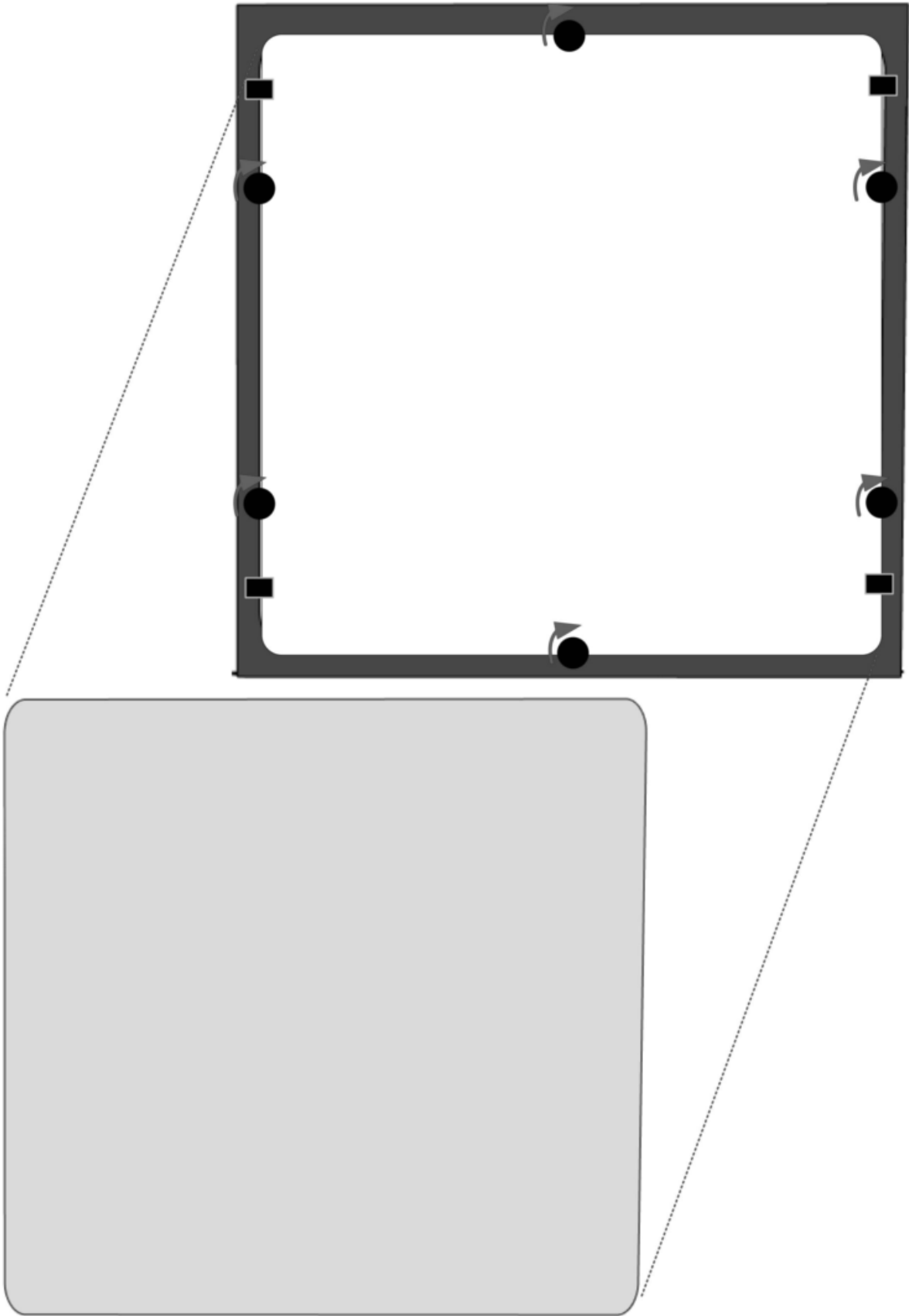
Corner Brace (X2)



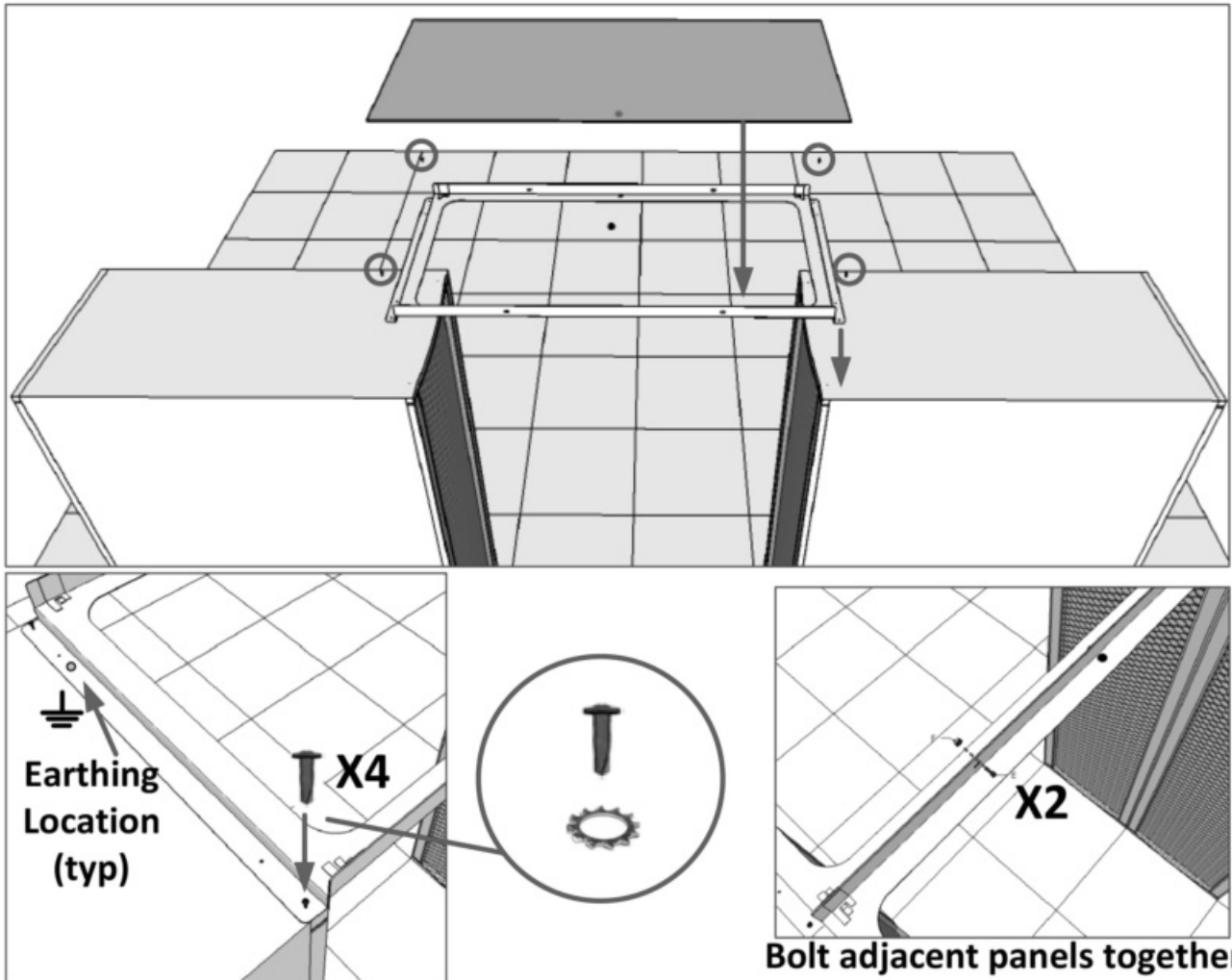
Secure vertical panel and corner braces using hardware provided

Hot Aisle Vertical Panel Installation

Install Plexiglass Panels

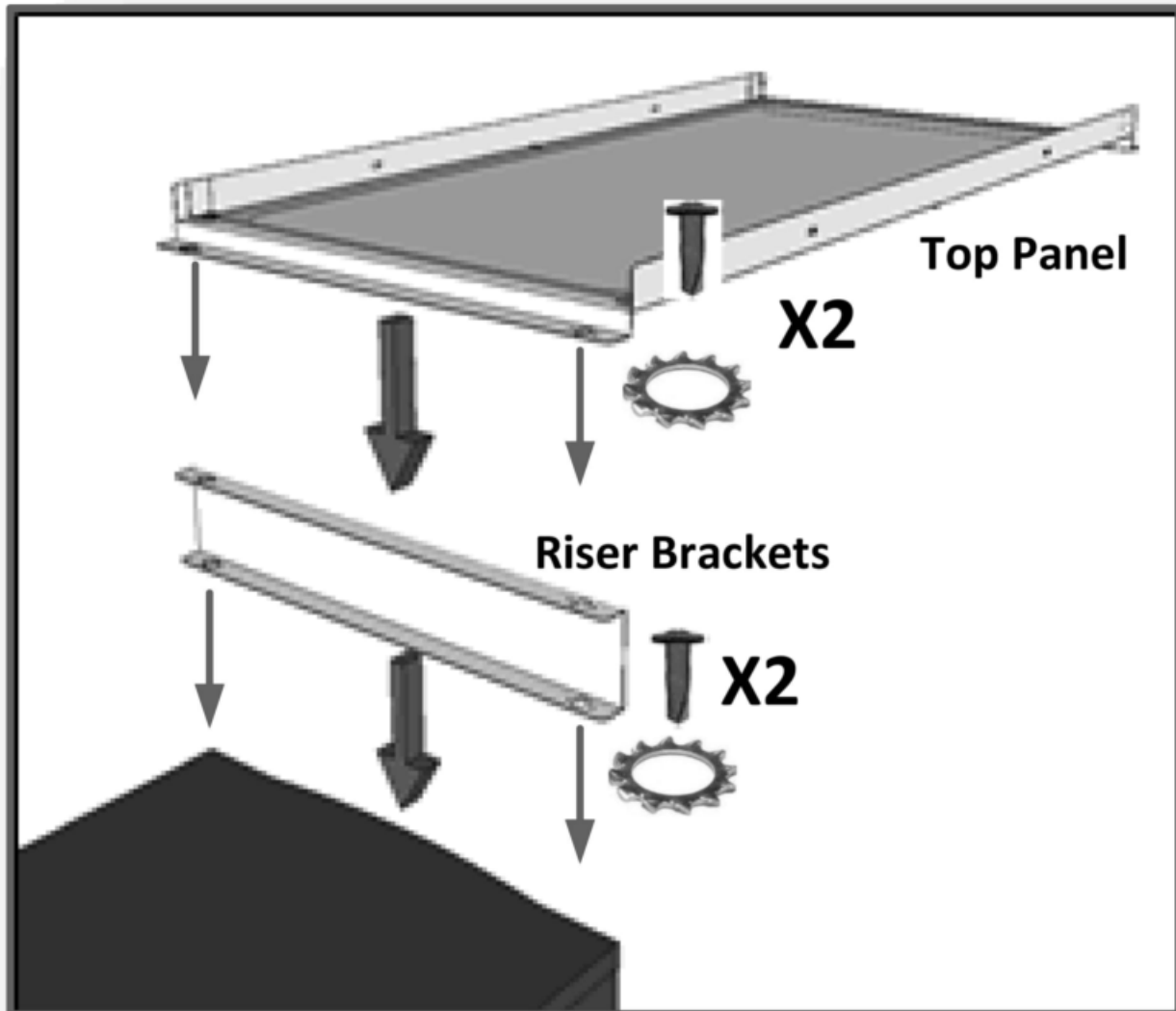


Cole Aisle Top Panel Installation



Notes://USANotes1/852567FD0060E9D9/38D46BF5E8F08834852564B500129B2C/96822E4A277180BA85257FCA005901E6Invitation: DLP flyer updates/contractual documentation (Jun 7 02:00 PM EDT)

Cold Aisle Riser Panels



Used for 42U Cabinet Installations to provide adequate headroom within the containment area

