

# UltraMAX 4-pair Impact tool Instructions



**Tool**

**Tool Head & blade assembly**

**Tool blade**

**Optional Palm Guard Insert:**

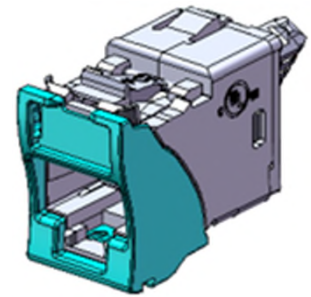
**Tools**

**Tool head attachment/removal**

**Tool blade reversal**

**See UltraMax Outlet product instructions for cable preparation and**

**DRAFT**



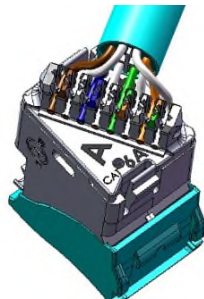
**1**

**2**

**3**

**Termination on loaded panel & with loose outlets (palm guard recommended)**

**Use caution**



**To assist safe installations, comply with the following:**

- A. Use caution when installing or modifying telecommunications circuits.
- B. Never touch uninsulated wire terminals unless the circuit has been disconnected.
- C. Never install this device in a wet location.
- D. Never install wiring during a lightning storm.

**Lors de l'installation, respectez les consignes de sécurité suivantes:**

- A. Utiliser avec prudence lors de l'installation ou de la modification circuits de télécommunications.
- B. Ne jamais toucher les bornes de fil métallique non isolés sauf si le circuit a été débranché.
- C. Ne jamais installer cet appareil dans un endroit humide.
- D. Ne jamais installer pendant un orage.

**To ensure you have the latest revision to this document, please visit: [www.Siemon.com](http://www.Siemon.com)**



**Global Headquarters**  
Watertown, Connecticut USA  
Tel: (1) 866-548-5814

For a complete listing of our global offices visit our web site

**4**

**5**