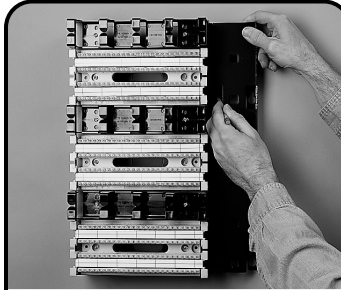
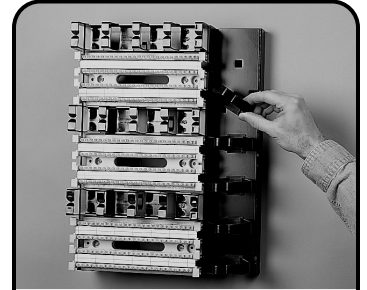


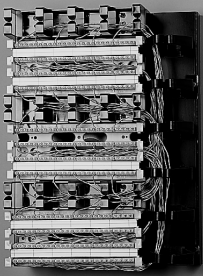
# Small Scale Vertical Cable/Wire Manager Instructions



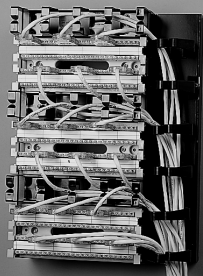
**1** Position the S110M-WM-XX vertical cable/wire manager(s) adjacent to the S110® tower. Align the top of the cable/wire manager with the top of the tower unit. Secure the manager to the wall with screws.



**2** To install cable management clips, align the square base of the clips with the square openings in the cable/wire manager base and rotate the clips 45 degrees to lock into place.



**3** Install cross-connect wire through cable management clips.



**4** The small scale vertical cable/wire manager is also ideal for S110P patch cords.

## To assist safe installations, comply with the following:

- A. Use caution when installing or modifying telecommunications circuits.
- B. Never touch uninsulated wire terminals unless the circuit has been disconnected.
- C. Never install this device in a wet location.
- D. Never install wiring during a lightning storm.

**Global Headquarters**  
Watertown, Connecticut USA  
Tel: (1) 866-548-5814

For a complete listing of our global offices visit our web site

 **SIEMON**  
www.siemon.com