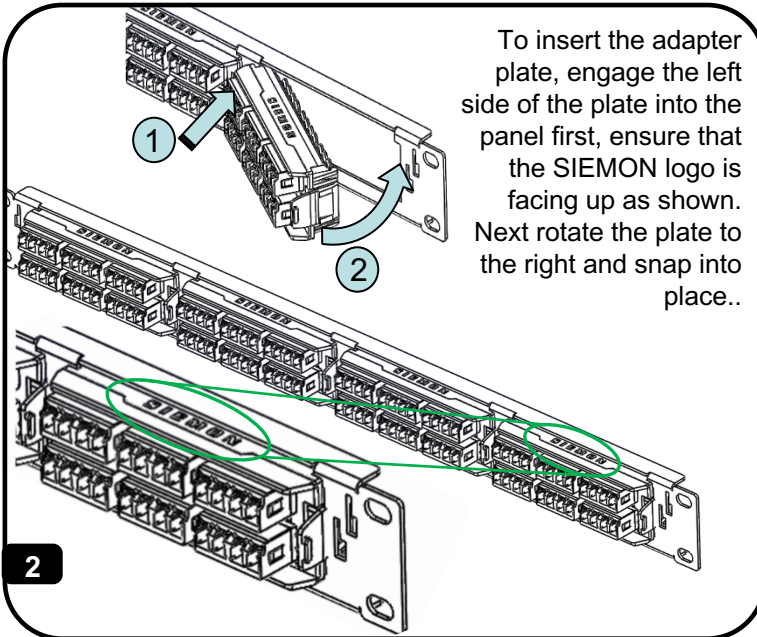
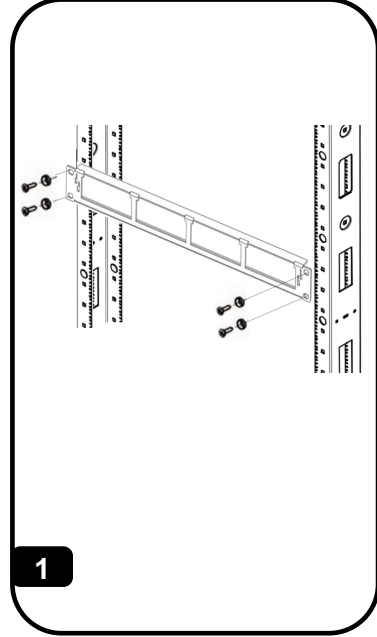
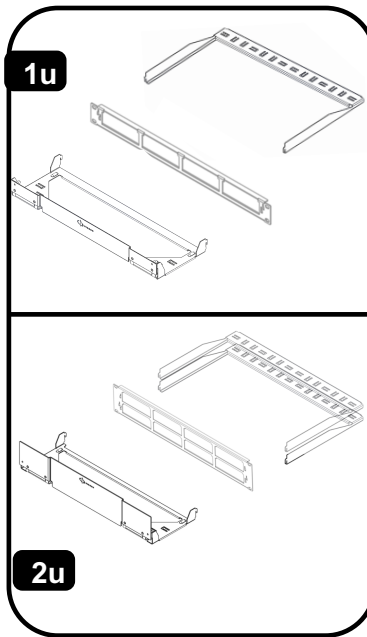
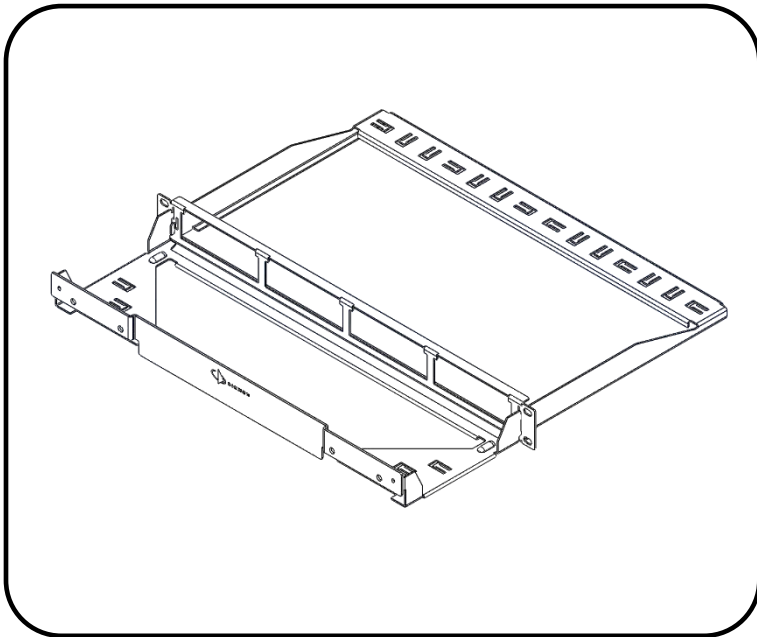
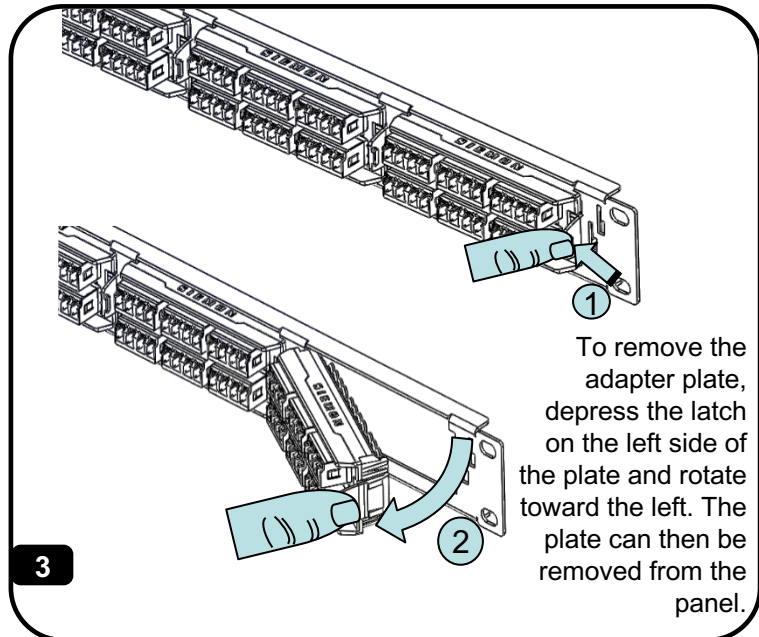


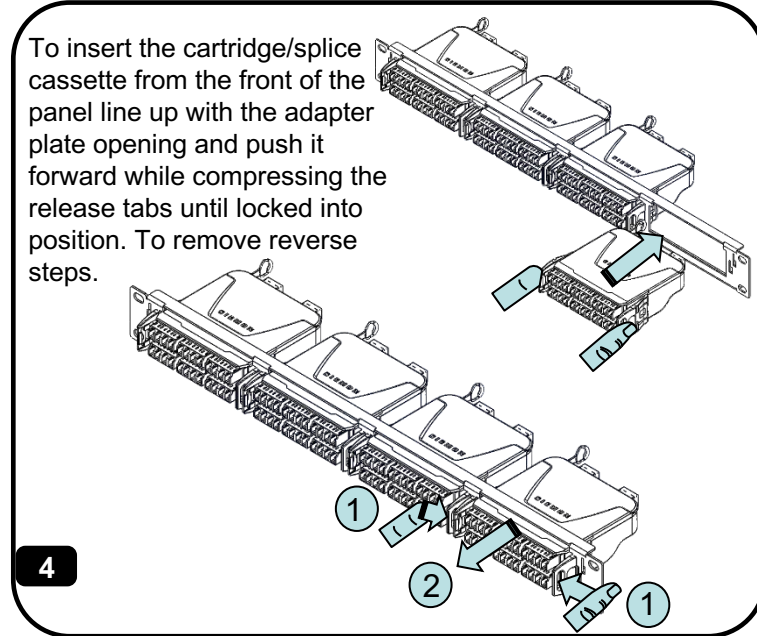
NGFE Panel Instructions



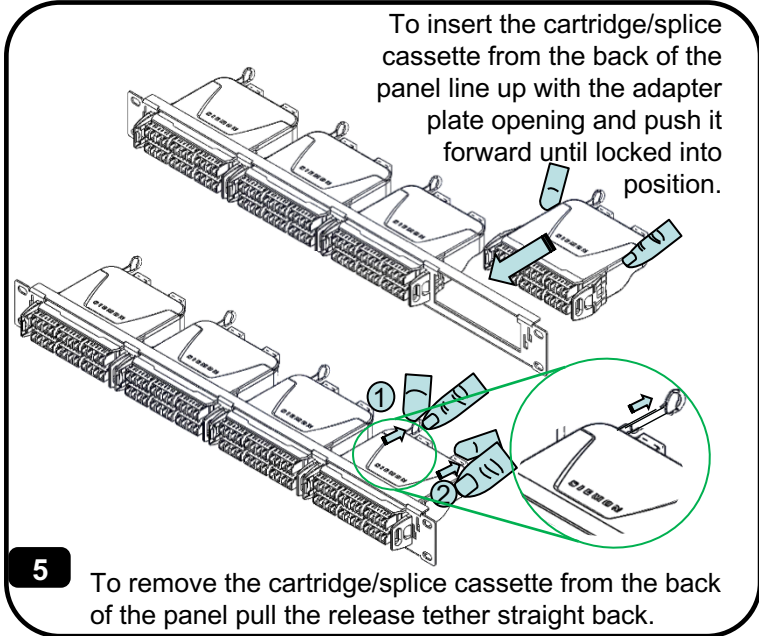
To insert the adapter plate, engage the left side of the plate into the panel first, ensure that the SIEMON logo is facing up as shown. Next rotate the plate to the right and snap into place..



To remove the adapter plate, depress the latch on the left side of the plate and rotate toward the left. The plate can then be removed from the panel.



To insert the cartridge/splice cassette from the front of the panel line up with the adapter plate opening and push it forward while compressing the release tabs until locked into position. To remove reverse steps.



To insert the cartridge/splice cassette from the back of the panel line up with the adapter plate opening and push it forward until locked into position.

To remove the cartridge/splice cassette from the back of the panel pull the release tether straight back.

NGFE Panel Instructions

Mounting holes for the Front Manager

1u

2u

Slight pressure to on mounting tabs as inserted into the mounting holes

6 Anchoring tabs can be inserted together or one side at a time

Slight pressure to on mounting tabs as removed from the mounting holes

7 Anchoring tabs can be removed together or one side at a time

Mounting holes for the Rear Manager

1u

Slight pressure to on mounting tabs as inserted into the mounting holes

8a

Mounting holes for the Rear Manager

2u

Slight pressure to on mounting tabs as inserted into the mounting holes

8b

Slight pressure to on mounting tabs as removed from mounting holes

9

- Comply with the following for safe installations:**
- A. Use caution when installing or modifying telecommunications circuits.
 - B. Never touch uninsulated wire terminals unless the circuit has been disconnected.
 - C. Never install this device in a wet location.
 - D. Never install wiring during a lightning storm.



Global Headquarters
Watertown, Connecticut USA
Tel: (1) 866-548-5814

