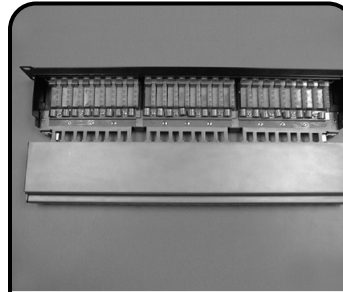
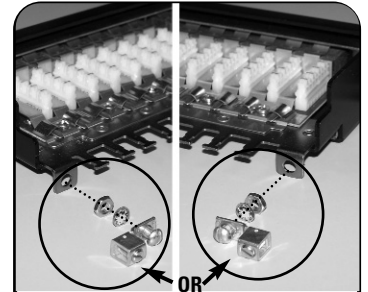


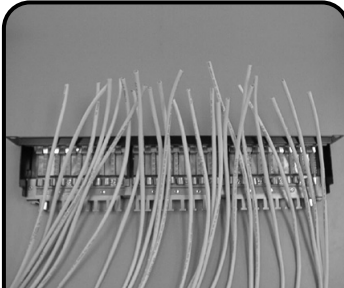
HD5[®] Screened Patch Panel Instructions



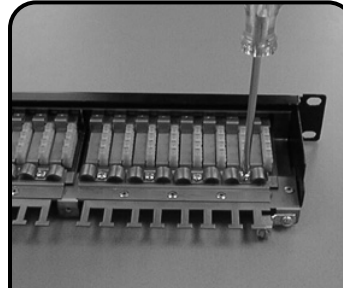
1 Place the screened HD5 Panel (P/N: HD5-S) on sturdy surface as close to rack as possible and remove rear cover. If cable slack does not allow this, mount to 19 inch relay rack or equivalent with 12-24 screws and washers, provided.



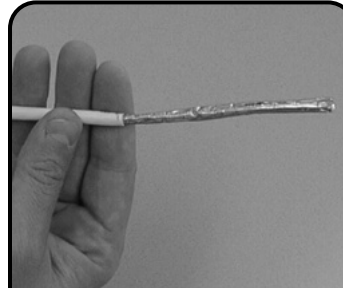
2 Install the ground lug provided on either side of the panel as shown. Tighten to 10-15 in.-lbs (1.1-1.7 N-m). Lock washer should be installed on nut side of panel.



3 Route cables to point of termination at the S110[®] connecting block and cut cables providing extra length for termination (approximately 5-10cm [2-4 in.] past the S110 connecting block). Ensure that enough slack is provided to properly secure cables to rack or rear cable manager if used.

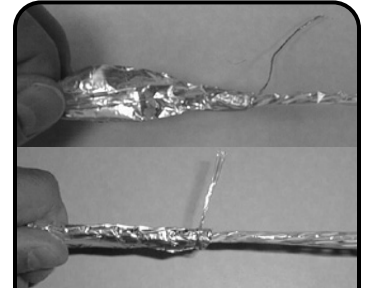


4 Loosen screw retaining ground clip enough to insert prepared cable between ground clip and spade.
Note: Ground clip can be removed completely to ease installation of cable.

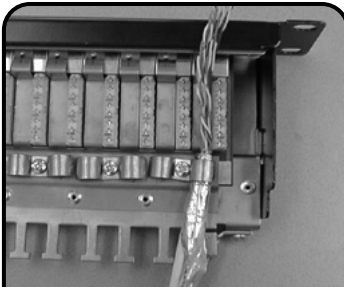


5 Remove cable jacket (approximately 7.7cm [3 in.]). It is recommended to leave the foil intact (as shown).

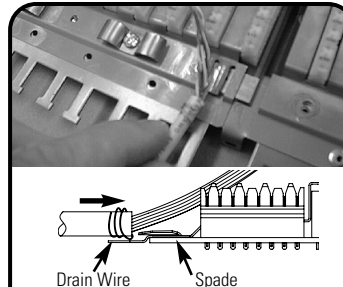
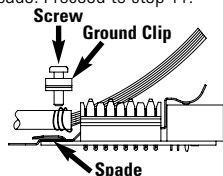
- If foil is intact see steps 5-6.
- If foil is removed see step 7.
- If the cable has a braid see steps 8-10.



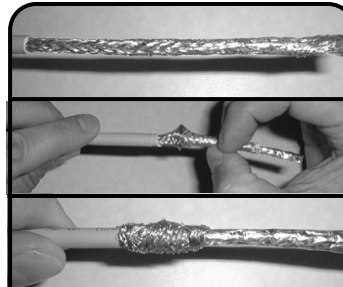
6 For Cables With Foil Shield Intact:
Fold foil shield back over jacket (approximately 7.7cm [3 in.]).
Note: If braid exists, proceed to step 8.
Wrap drain wire (if present) around foil shield within 1.3cm [.5 in.] of jacket end. (Wrap drain wire a minimum of 3 times around cable jacket).



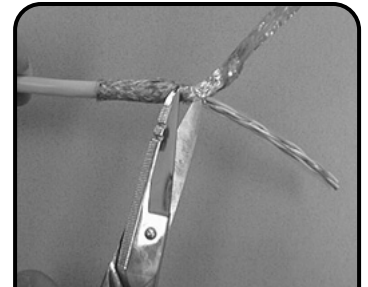
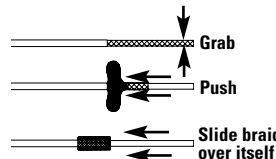
7 For Cables With Foil Shield Intact:
Insert or place cable between ground clip and spade. Proceed to step 11.



8 For Cables With The Foil Removed:
If foil shield is removed during sheath removal process, wrap drain wire (if present) around sheath within 1.3cm [.5 in.] of jacket end. Push cable onto spade of shield termination assembly. Proceed to step 11.
Note: If plastic wrap exists between foil and conductors, slide the cable onto the ground spade and then remove plastic wrap.

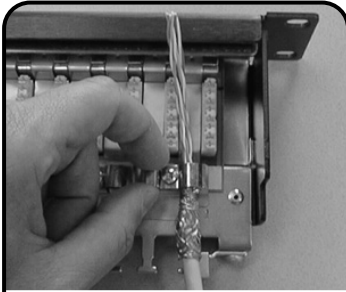


9 For Braided Cables:
Note: If braid exists, fold braid back over itself and wrap drain wire a minimum of 3 times around braid.

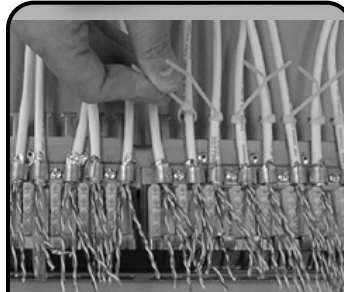
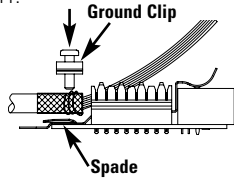


10 For Braided Cables:
If foil exists beneath braid, remove foil to point of jacket removal.

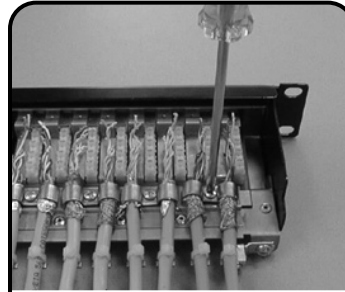
HD5® Screened Patch Panel Instructions



11 For Braided Cables:
Insert or place cable between ground clip and spade as shown. Proceed to step 11.

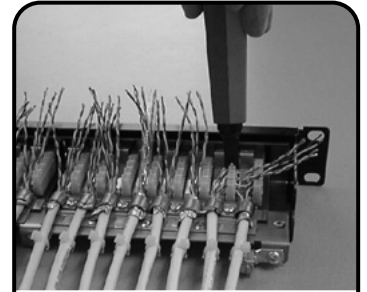


12 Secure cables to strain relief tabs with cable ties provided and trim excess. The cable tie provides cable strain relief.



13 Tighten screw for ground clip until it bottoms out.

Note: Remove excess foil that is not in contact with ground clip.

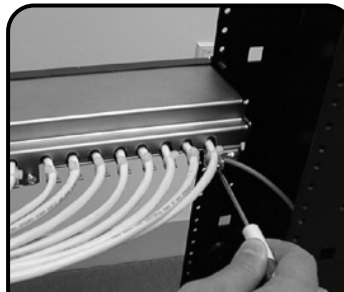


14 Terminate wires to the S110 connecting blocks.

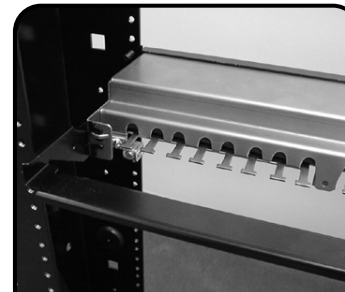
Note: This can be performed using either single-position impact tool (P/N: S814-110) or multi-pair impact tool (P/N: S788J1).



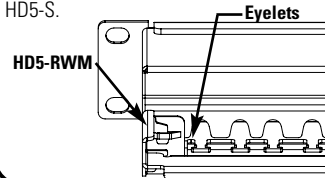
15 Mount the HD5-S to the desired position on an 19 inch relay rack or equivalent with 12-24 screws and washers provided.
Slide the rear cover into place and fasten with two 6 x 32 screws provided.



16 Use the ground lug mounted on the rear of the panel (from Step 2) to attach a 4.1mm or 5.2mm (#6 or #4 AWG) ground wire (not included) to the telecommunications grounding bus bar.



17 For additional cable management attach the optional rear cable management bracket, P/N: HD5-RWM (available separately) to the rear of the HD5-S.



18 After the rear cable manager is attached, secure the cables to the bracket with VCM-series hook and loop cable managers or cable ties.
It is recommended to route cables to the left side of the patch panel from the left, and to the right side of the patch panel from the right.

To assist safe installations, comply with the following:

- A. Use caution when installing or modifying telecommunications circuits.
- B. Never touch uninsulated wire terminals unless the circuit has been disconnected.
- C. Never install this device in a wet location.
- D. Never install wiring during a lightning storm.



Siemon — Australia
Sydney, Australia
Tel: (61) 2 9452 2666

**Siemon — CASA
Central & South America**
Bogota, Columbia
Tel: (011) 571 317 2121

Siemon — China
Beijing, P.R. China
Tel: (86) 10 6559 8860

Siemon — France
Paris, France
Tel: (33) 1 46 46 11 85

Siemon — Germany
Frankfurt, Germany
Tel: (49) (0) 69 97168 184

Siemon — Italy
Milano, Italy
Tel: (39) 02 64 672 209

Siemon — Japan
Tokyo, Japan
Tel: (03) 5437 1580

Siemon — Southeast Asia
Singapore
Tel: (65) 345 9119

Siemon — UK
Surrey, England
Tel: (44) (0) 1932 571771

Siemon — North America
Watertown, Connecticut
Tel: (1) 866-548-5814



www.siemon.com