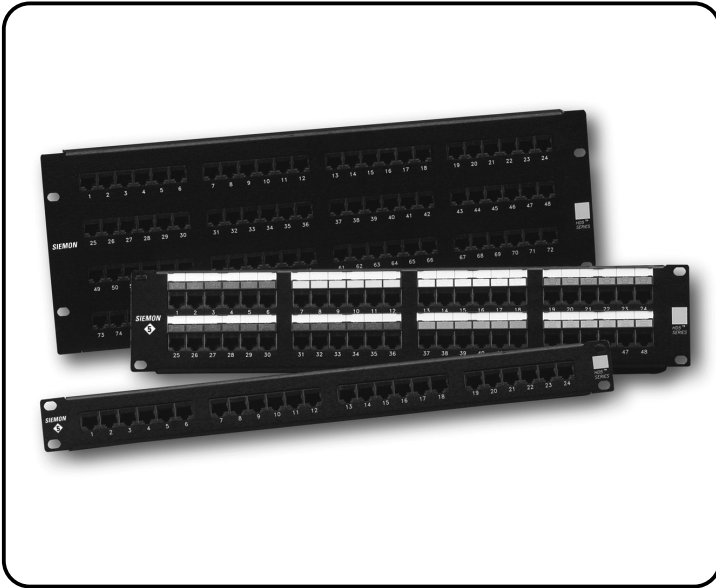
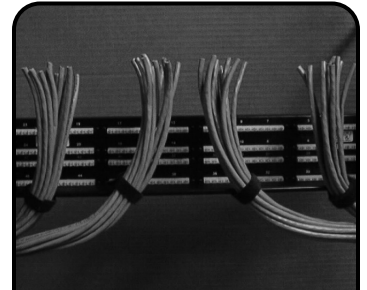


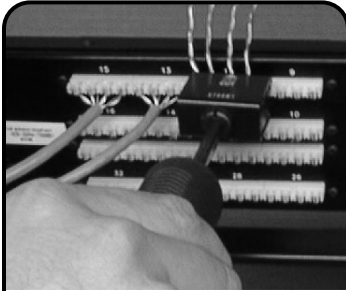
HD5® Patch Panel Instructions



1 Using the #12-24 machine screws and washers provided, mount the patch panel on a 19 inch rack.

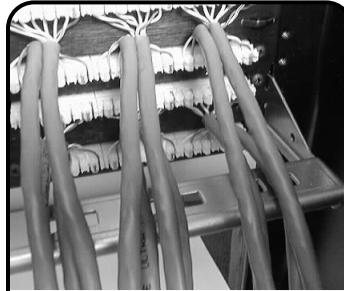


2 We recommend that half the cables be routed from the left and half from the right. Allow 2-4 in. (5-10 cm) of slack past the connecting blocks for termination.

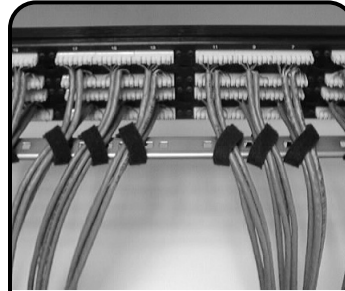


3 Starting at one end, terminate cable to the S110® connecting blocks and work towards the middle. If cables are routed from top of panel, terminate from the top down. If routed from the bottom, terminate from the bottom up.

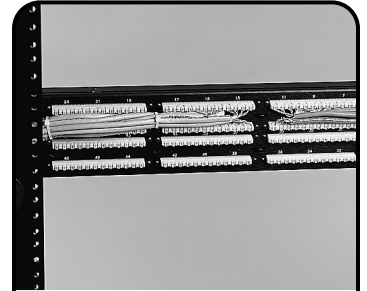
Note: For panels with universal T568A/B wiring, see label on the back of panel for wiring schemes.



4 Using Rear Cable Manager - Attach the cable management bracket, (P/N HD-RWM) to the HD5® panel using the slots on the back of the panel.

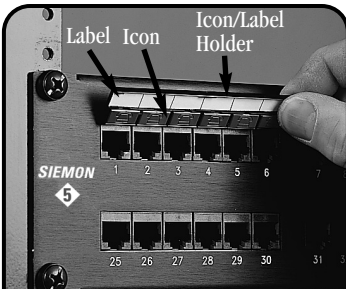


5 Using Rear Cable Manager - Secure the cables to the cable manager using supplied cable ties or optional velcro cable managers.

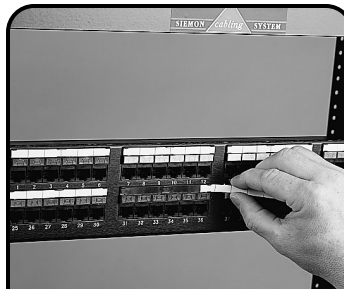


6 Without Rear Cable Manager - Using the raised eyelets along the cable termination path, tie down the cable with the cable ties provided.

Note: Cable ties should be loosely cinched to not deform the bundle or cable jacket.



7 Use the HD5-ICON holder to color code ports. Peel paper from adhesive backing of HD5-ICON holder, locate bottom lip of icon/label holder to top edge of jacks on patch panel and press firmly.



8 Slide paper label into top of holder and snap icons into icon pockets.

To assist safe installations, comply with the following:

- A. Use caution when installing or modifying telecommunications circuits.
- B. Never touch uninsulated wire terminals unless the circuit has been disconnected.
- C. Never install this device in a wet location.
- D. Never install wiring during a lightning storm.



Global Headquarters
Watertown, Connecticut USA
Tel: (1) 866-548-5814

For a complete listing of our global offices visit our web site

