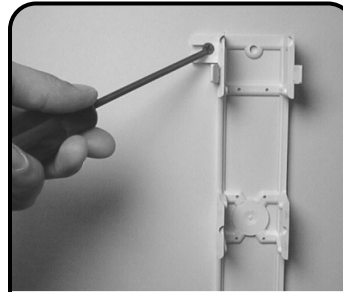
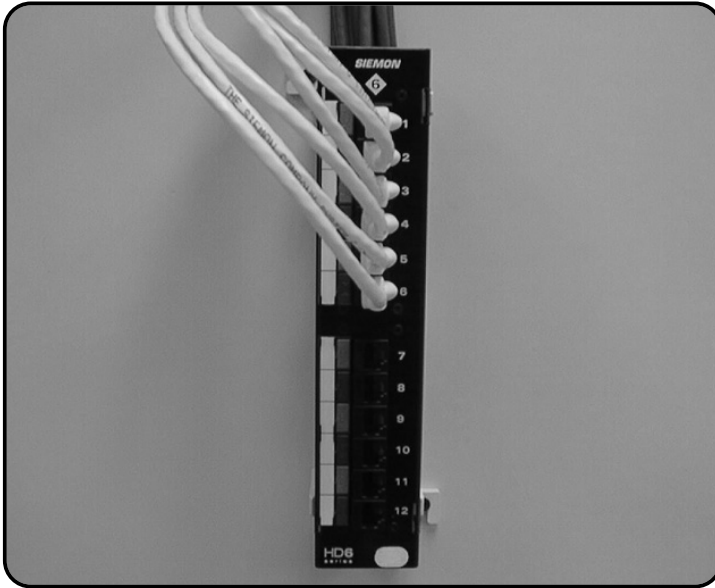
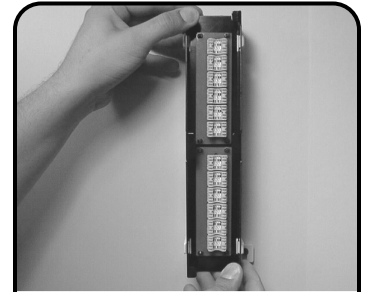


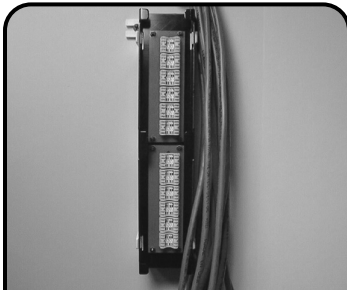
Category 6 HD6-89D Instructions



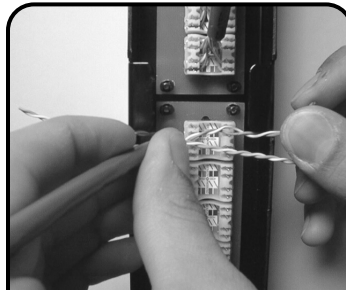
1 Mount the S89D bracket to a properly prepared mounting surface.



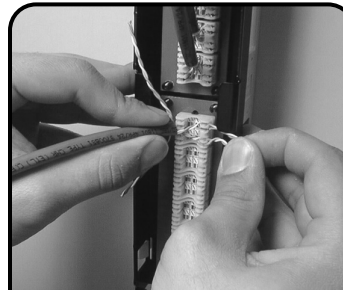
2 Mount the HD6-89D assembly onto the bracket backwards. This will hold the assembly in place while cables are terminated.



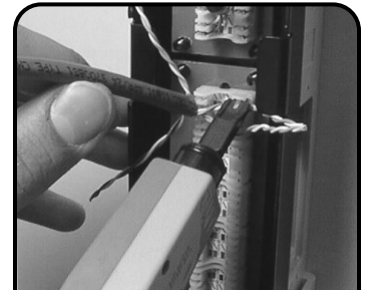
3 Make sure cables will reach the farthest termination point.



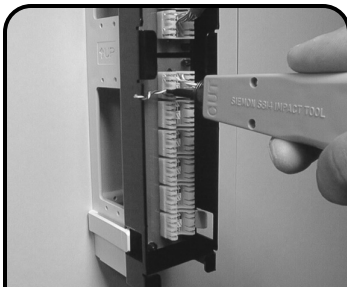
4 Begin terminating the cables from the top and work towards the bottom.



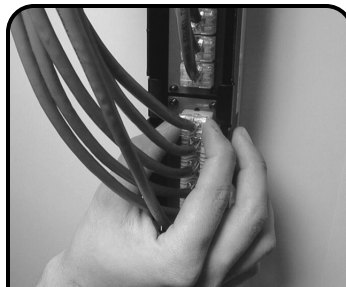
5 Following the color scheme on the label for the selected wiring configuration (T568A or B), lace the conductors from the first 2 pairs into their termination point.



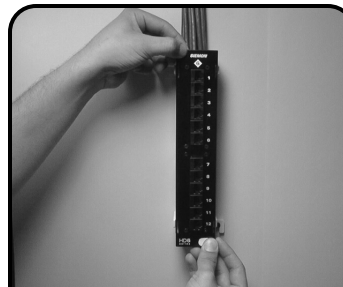
6 Terminate the 2 pairs using the Siemon S814 termination tool or equivalent.



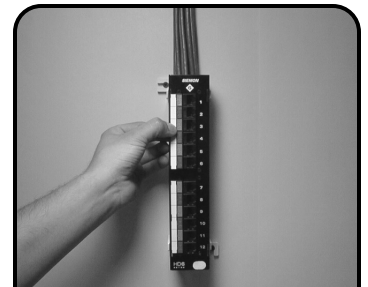
7 Lace and terminate the remaining 2 pairs into their appropriate termination points.



8 Place clear strain relief caps over all S310™ termination points that have cables terminated to them, ensuring that the cable jacket does not extend into the caps.



9 Remove the HD6-89D assembly from the S89D bracket, turn it so the modular jacks face outward and replace it on the bracket.



10 Position and attach the included adhesive backed HD5-ICON6 label and icon holder.

Category 6 HD6-89D Instructions

To assist safe installations, comply with the following:

- A. Use caution when installing or modifying telecommunications circuits.
- B. Never touch uninsulated wire terminals unless the circuit has been disconnected.
- C. Never install this device in a wet location.
- D. Never install wiring during a lightning storm.

Global Headquarters
Watertown, Connecticut USA
Tel: (1) 866-548-5814

For a complete listing of our global offices visit our web site

