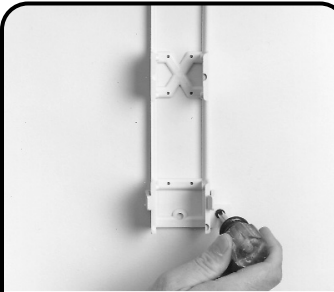
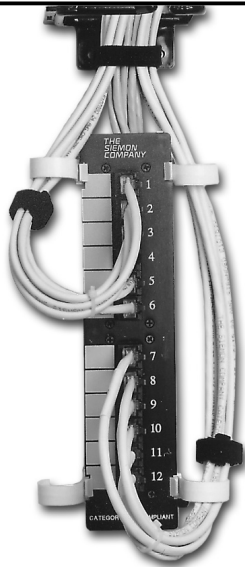
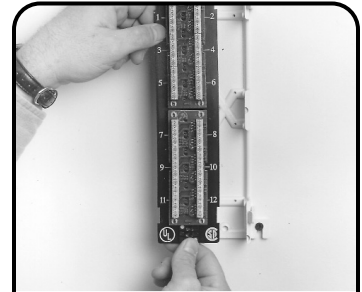


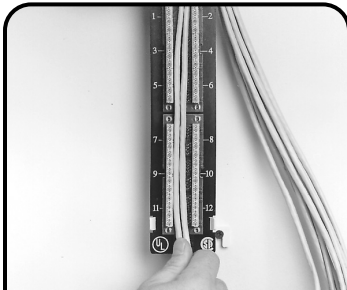
# Category 5 HD5-89D Instructions



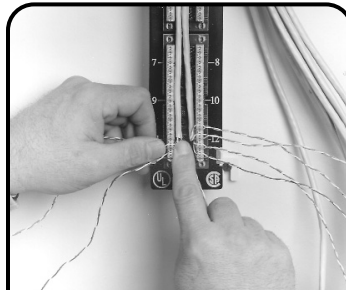
**1** Mount the S89D bracket to a properly prepared mounting surface.



**2** Mount the HD5-89D assembly into the S89D bracket backwards (i.e. the modular jacks should be facing the mounting surface). This will hold the assembly in place while you terminate the associated cables.

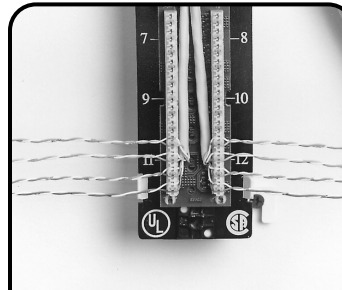


**3** Begin routing the cables into the HD5-89D assembly. Cables must be routed between the rows of S110® connecting blocks. This will ensure a proper fit when the assembly is returned to its proper position in the S89D bracket.

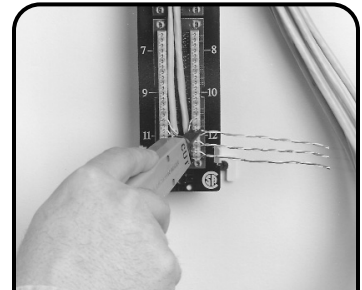


**4** Begin lacing the cables at the opposite end from which they enter the S89D bracket.

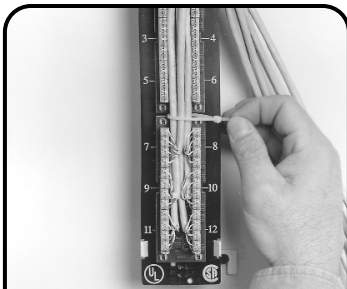
*Note: Labels are provided on universal panel to allow selection of T568A or T568B wiring scheme.*



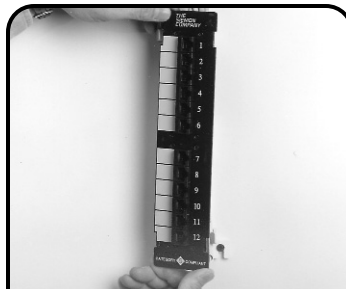
**5** Proper termination procedures are critical to the performance of category 5 products. Therefore, strip back only as much of the cable jacket as is necessary to terminate the individual conductors. Also maintain the individual cable twist to within .5" of the termination.



**6** Terminate the individual conductors using the Siemon Company S814 termination tool or equivalent.



**7** Once the cables have been terminated, dress the individual cables as you work your way to the top. Take care not to overtighten the cable ties. This has proven to compromise transmission performance. Strain relieve the entire bundle of cables to the cable tie down provided at either end of the bracket.



**8** Remove the HD5-89D assembly from the S89D bracket. Turn it 180 degrees and replace it into the bracket with the modular plugs facing outward.

**To assist safe installations, comply with the following:**

- A. Use caution when installing or modifying telecommunications circuits.
- B. Never touch uninsulated wire terminals unless the circuit has been disconnected.
- C. Never install this device in a wet location.
- D. Never install wiring during a lightning storm.



**Global Headquarters**  
Watertown, Connecticut USA  
Tel: (1) 866-548-5814

For a complete listing of our global offices visit our web site

